

# Product Datasheet

## MMP-2 Antibody NBP2-27208

Unit Size: 0.1 mg

Store at 4C short term. Aliquot and store at -20C long term. Avoid freeze-thaw cycles.

[www.novusbio.com](http://www.novusbio.com)



[technical@novusbio.com](mailto:technical@novusbio.com)

### Publications: 1

Protocols, Publications, Related Products, Reviews, Research Tools and Images at:  
[www.novusbio.com/NBP2-27208](http://www.novusbio.com/NBP2-27208)

Updated 9/9/2025 v.20.1

Earn rewards for product  
reviews and publications.

Submit a publication at [www.novusbio.com/publications](http://www.novusbio.com/publications)

Submit a review at [www.novusbio.com/reviews/destination/NBP2-27208](http://www.novusbio.com/reviews/destination/NBP2-27208)



**NBP2-27208**

## MMP-2 Antibody

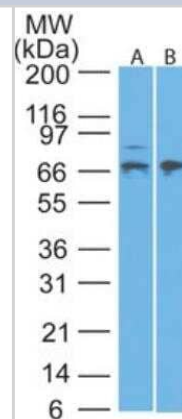
Product Information	
Unit Size	0.1 mg
Concentration	0.5 mg/ml
Storage	Store at 4C short term. Aliquot and store at -20C long term. Avoid freeze-thaw cycles.
Clonality	Polyclonal
Preservative	0.05% Sodium Azide
Isotype	IgG
Purity	Protein G purified
Buffer	PBS, 0.05% BSA

Product Description	
Description	Novus Biologicals Rabbit MMP-2 Antibody (NBP2-27208) is a polyclonal antibody validated for use in WB. Anti-MMP-2 Antibody: Cited in 1 publication. All Novus Biologicals antibodies are covered by our 100% guarantee.
Host	Rabbit
Gene ID	4313
Gene Symbol	MMP2
Species	Human, Canine, Equine, Feline, Primate
Immunogen	A portion of amino acids 550-600 of human MMP2 was used as the immunogen for this antibody.

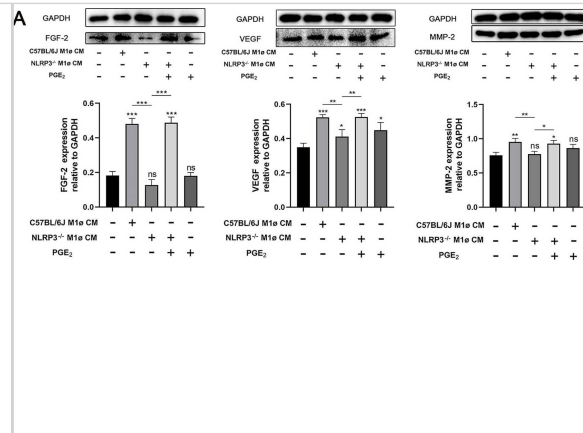
Product Application Details	
Applications	Western Blot
Recommended Dilutions	Western Blot 3 - 5 ug/mL

**Images**

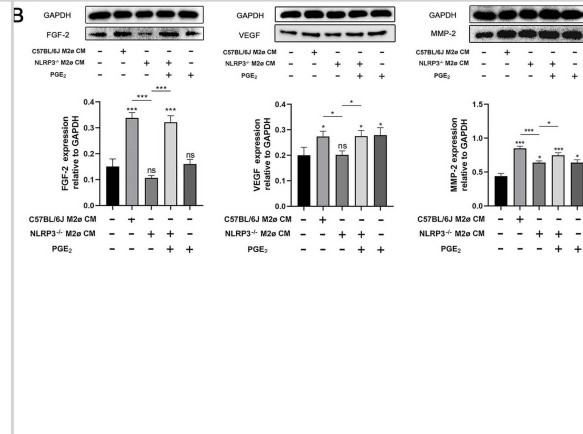
Western Blot: MMP-2 Antibody [NBP2-27208] - Analysis of MMP2 in A: Human MCF7 and B: Mouse RAW lysate using MMP2 antibody at 3 ug/mL.



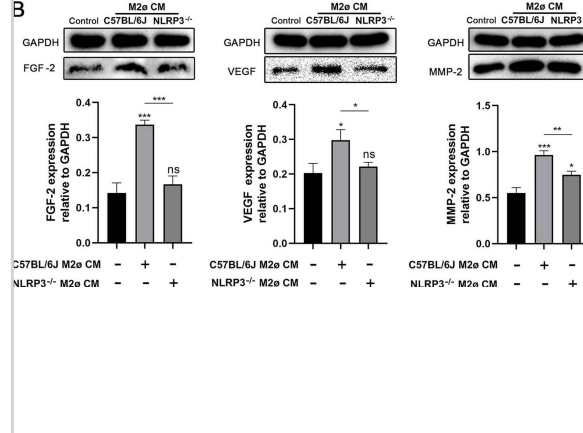
**NLRP3 in macrophages affects myofibroblasts activities through PGE2**  
**(A)** The protein expression levels of FGF-2, VEGF and MMP-2 in wild-type myofibroblasts treated with wild-type M1 $\phi$  CM or NLRP3 $^{-/-}$  M1 $\phi$  CM. **B** The protein expression levels of FGF-2, VEGF and MMP-2 in wild-type myofibroblasts treated with wild-type M2 $\phi$  CM or NLRP3 $^{-/-}$  M2 $\phi$  CM. Grayscale values were quantified using ImageJ software. Results are expressed as mean  $\pm$  SD and analyzed by one-way ANOVA followed by Tukey's multiple comparisons test (n = 5). Statistical significance is denoted as follows: \*P < 0.05, \*\*P < 0.01, \*\*\*P < 0.001. ns, not significant Image collected and cropped by CiteAb from the following open publication (<https://pubmed.ncbi.nlm.nih.gov/39881348>), licensed under a CC-BY license. Not internally tested by Novus Biologicals.



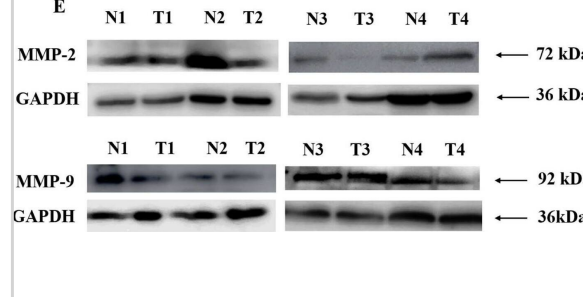
**NLRP3 in macrophages affects myofibroblasts activities through PGE2**  
**(A)** The protein expression levels of FGF-2, VEGF and MMP-2 in wild-type myofibroblasts treated with wild-type M1 $\phi$  CM or NLRP3 $^{-/-}$  M1 $\phi$  CM. **B** The protein expression levels of FGF-2, VEGF and MMP-2 in wild-type myofibroblasts treated with wild-type M2 $\phi$  CM or NLRP3 $^{-/-}$  M2 $\phi$  CM. Grayscale values were quantified using ImageJ software. Results are expressed as mean  $\pm$  SD and analyzed by one-way ANOVA followed by Tukey's multiple comparisons test (n = 5). Statistical significance is denoted as follows: \*P < 0.05, \*\*P < 0.01, \*\*\*P < 0.001. ns, not significant Image collected and cropped by CiteAb from the following open publication (<https://pubmed.ncbi.nlm.nih.gov/39881348>), licensed under a CC-BY license. Not internally tested by Novus Biologicals.



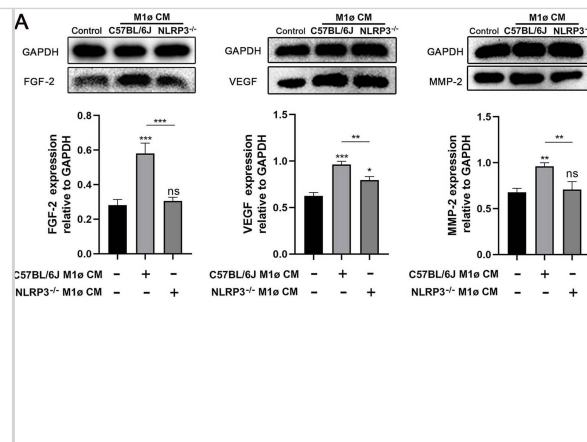
**NLRP3 in macrophages affects the activity of myofibroblasts**  
**(A)** The protein expression levels of FGF-2, VEGF, and MMP-2 in wild-type myofibroblasts treated with wild-type M1 $\phi$  CM or NLRP3 $^{-/-}$  M1 $\phi$  CM. **B** The protein expression levels of FGF-2, VEGF, and MMP-2 in wild-type myofibroblasts treated with wild-type M2 $\phi$  CM or NLRP3 $^{-/-}$  M2 $\phi$  CM. GAPDH was used as a loading control. Grayscale values were measured using ImageJ software. Results are expressed as mean  $\pm$  SD and were analyzed by one-way ANOVA followed by Tukey's multiple comparisons test (n = 5). Statistical significance is indicated as follows: \*P < 0.05, \*\*P < 0.01, \*\*\*P < 0.001. ns, not significant Image collected and cropped by CiteAb from the following open publication (<https://pubmed.ncbi.nlm.nih.gov/39881348>), licensed under a CC-BY license. Not internally tested by Novus Biologicals.



**(A–D)** Gene expression of metastasis markers in breast cancer patients  
**(A)** MMP-2, **(B)** MMP-9 in local cohort **(C)** MMP-2, **(D)** MMP-9 in TCGA cohort and **(E–G)** Protein expression of metastasis markers **(E)** Representative blots in adjacent normal (N) and tumor (T) tissues, **(F)** Densitometric analysis of MMP-2 and **(G)** MMP-9 levels in adjacent normal and tumor tissues. Image collected and cropped by CiteAb from the following open publication (<https://pubmed.ncbi.nlm.nih.gov/36309544>), licensed under a CC-BY license. Not internally tested by Novus Biologicals.



NLRP3 in macrophages affects the activity of myofibroblasts (A) The protein expression levels of FGF-2, VEGF, and MMP-2 in wild-type myofibroblasts treated with wild-type M1 $\phi$  CM or NLRP3<sup>-/-</sup> M1 $\phi$  CM. B The protein expression levels of FGF-2, VEGF, and MMP-2 in wild-type myofibroblasts treated with wild-type M2 $\phi$  CM or NLRP3<sup>-/-</sup> M2 $\phi$  CM. GAPDH was used as a loading control. Grayscale values were measured using ImageJ software. Results are expressed as mean  $\pm$  SD and were analyzed by one-way ANOVA followed by Tukey's multiple comparisons test (n = 5). Statistical significance is indicated as follows: \*P < 0.05, \*\*P < 0.01, \*\*\*P < 0.001. ns, not significant Image collected and cropped by CiteAb from the following open publication (<https://pubmed.ncbi.nlm.nih.gov/39881348>), licensed under a CC-BY license. Not internally tested by Novus Biologicals.



## Publications

Bhadwal P, Randhawa V, Vaiphei K et al. Clinical relevance of CERK and SPHK1 in breast cancer and their association with metastasis and drug resistance Scientific reports 2022-10-29 [PMID: 36309544] (WB, Human)

Details:

Dilution used in WB 1:1000



### **Novus Biologicals USA**

10730 E. Briarwood Avenue  
Centennial, CO 80112  
USA  
Phone: 303.730.1950  
Toll Free: 1.888.506.6887  
Fax: 303.730.1966  
nb-customerservice@bio-techne.com

### **Bio-Techne Canada**

21 Canmotor Ave  
Toronto, ON M8Z 4E6  
Canada  
Phone: 905.827.6400  
Toll Free: 855.668.8722  
Fax: 905.827.6402  
canada.inquires@bio-techne.com

### **Bio-Techne Ltd**

19 Barton Lane  
Abingdon Science Park  
Abingdon, OX14 3NB, United Kingdom  
Phone: (44) (0) 1235 529449  
Free Phone: 0800 37 34 15  
Fax: (44) (0) 1235 533420  
info.EMEA@bio-techne.com

### **General Contact Information**

www.novusbio.com  
Technical Support: nb-technical@bio-techne.com  
Orders: nb-customerservice@bio-techne.com  
General: novus@novusbio.com

### **Products Related to NBP2-27208**

---

NBP2-33376H	Blue Marker Antibody (6F4-F6) [HRP]
HAF008	Goat anti-Rabbit IgG Secondary Antibody [HRP]
NB7160	Goat anti-Rabbit IgG (H+L) Secondary Antibody [HRP]
NBP2-24891	Rabbit IgG Isotype Control

---

### **Limitations**

This product is for research use only and is not approved for use in humans or in clinical diagnosis. Primary Antibodies are guaranteed for 1 year from date of receipt.

For more information on our 100% guarantee, please visit [www.novusbio.com/guarantee](http://www.novusbio.com/guarantee)

Earn gift cards/discounts by submitting a review: [www.novusbio.com/reviews/submit/NBP2-27208](http://www.novusbio.com/reviews/submit/NBP2-27208)

Earn gift cards/discounts by submitting a publication using this product:  
[www.novusbio.com/publications](http://www.novusbio.com/publications)

