

Product Datasheet

PU.1/Spi-1 Antibody NBP2-27163

Unit Size: 0.1 mg

Store at 4C short term. Aliquot and store at -20C long term. Avoid freeze-thaw cycles.

www.novusbio.com



technical@novusbio.com

Reviews: 1 Publications: 1

Protocols, Publications, Related Products, Reviews, Research Tools and Images at:
www.novusbio.com/NBP2-27163

Updated 9/9/2025 v.20.1

**Earn rewards for product
reviews and publications.**

Submit a publication at www.novusbio.com/publications

Submit a review at www.novusbio.com/reviews/destination/NBP2-27163



NBP2-27163

PU.1/Spi-1 Antibody

Product Information	
Unit Size	0.1 mg
Concentration	0.5 mg/ml
Storage	Store at 4C short term. Aliquot and store at -20C long term. Avoid freeze-thaw cycles.
Clonality	Polyclonal
Preservative	0.05% Sodium Azide
Isotype	IgG
Purity	Protein A purified
Buffer	PBS and 0.05% BSA

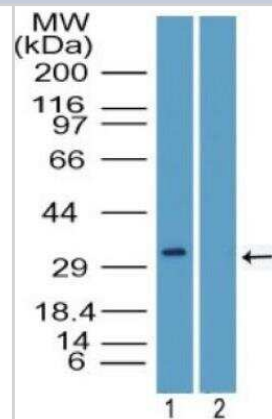
Product Description	
Description	Novus Biologicals Rabbit PU.1/Spi-1 Antibody (NBP2-27163) is a polyclonal antibody validated for use in WB and Flow. Anti-PU.1/Spi-1 Antibody: Cited in 1 publication. All Novus Biologicals antibodies are covered by our 100% guarantee.
Host	Rabbit
Gene ID	6688
Gene Symbol	SPI1
Species	Human, Mouse, Bovine, Canine, Equine, Primate
Reactivity Notes	The amino acid sequence used as immunogen is 89% homologous in Opossum.
Immunogen	A portion of amino acid 20-70 of human PU.1 was used as the immunogen.

Product Application Details	
Applications	Western Blot, Flow Cytometry
Recommended Dilutions	Western Blot 4-6ug/ml, Flow Cytometry 1.25 ug/10 ⁶ cells

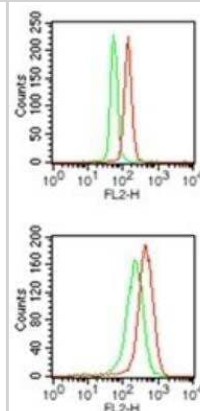


Images

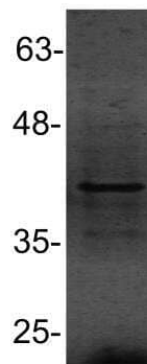
Western Blot: PU.1/Spi-1 Antibody [NBP2-27163] - PU.1/Spi1 Antibody [NBP2-27163] - Analysis of PU.1/Spi1 in U937 cell lysate in the 1) absence and 2) presence of immunizing peptide using NBP2-27163.



Flow Cytometry: PU.1/Spi-1 Antibody [NBP2-27163] - PU.1/Spi1 Antibody [NBP2-27163] - Intracellular analysis of PU.1 in mouse RAW cells (top) and PMA treated (20 ng/ml, overnight) human ThP1 cells (bottom) using 1.25 ug/10⁶ cells. Green peak represents isotype control this antibody ; red represents anti-PU.1 antibody.



Western Blot: PU.1/Spi1 Antibody [NBP2-27163] - analysis of 293T cell lysate (30ug) using anti-PU.1/Spi1 antibody. Image from verified customer review.



Publications

K Clesham, V Walf-Vorde, L Gasparoli, C Virely, S Cantilena, A Tsakaneli, S Inglott, S Adams, S Samarasing, J Bartram, G Williams, J de Boer, O Williams Identification of a c-MYB-directed therapeutic for acute myeloid leukemia Leukemia, 2022-04-02;0(0):. 2022-04-02 [PMID: 35368048]



Novus Biologicals USA

10730 E. Briarwood Avenue
Centennial, CO 80112
USA
Phone: 303.730.1950
Toll Free: 1.888.506.6887
Fax: 303.730.1966
nb-customerservice@bio-techne.com

Bio-Techne Canada

21 Canmotor Ave
Toronto, ON M8Z 4E6
Canada
Phone: 905.827.6400
Toll Free: 855.668.8722
Fax: 905.827.6402
canada.inquires@bio-techne.com

Bio-Techne Ltd

19 Barton Lane
Abingdon Science Park
Abingdon, OX14 3NB, United Kingdom
Phone: (44) (0) 1235 529449
Free Phone: 0800 37 34 15
Fax: (44) (0) 1235 533420
info.EMEA@bio-techne.com

General Contact Information

www.novusbio.com
Technical Support: nb-technical@bio-techne.com
Orders: nb-customerservice@bio-techne.com
General: novus@novusbio.com

Products Related to NBP2-27163

NBP2-33376H	Blue Marker Antibody (6F4-F6) [HRP]
HAF008	Goat anti-Rabbit IgG Secondary Antibody [HRP]
NB7160	Goat anti-Rabbit IgG (H+L) Secondary Antibody [HRP]
NBP2-24891	Rabbit IgG Isotype Control

Limitations

This product is for research use only and is not approved for use in humans or in clinical diagnosis. Primary Antibodies are guaranteed for 1 year from date of receipt.

For more information on our 100% guarantee, please visit www.novusbio.com/guarantee

Earn gift cards/discounts by submitting a review: www.novusbio.com/reviews/submit/NBP2-27163

Earn gift cards/discounts by submitting a publication using this product:
www.novusbio.com/publications

