

Product Datasheet

Siglec-H Antibody (23M14A10) - BSA Free NBP2-27061

Unit Size: 0.05 mg

Store at 4C short term. Aliquot and store at -20C long term. Avoid freeze-thaw cycles.

www.novusbio.com



technical@novusbio.com

Publications: 1

Protocols, Publications, Related Products, Reviews, Research Tools and Images at:
www.novusbio.com/NBP2-27061

Updated 9/9/2025 v.20.1

Earn rewards for product
reviews and publications.

Submit a publication at www.novusbio.com/publications

Submit a review at www.novusbio.com/reviews/destination/NBP2-27061



NBP2-27061

Siglec-H Antibody (23M14A10) - BSA Free

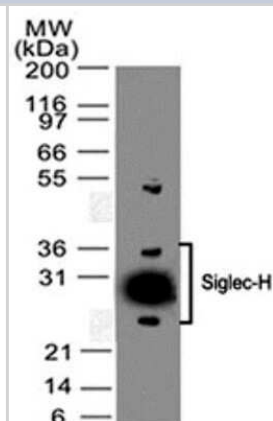
Product Information	
Unit Size	0.05 mg
Concentration	1.0 mg/ml
Storage	Store at 4C short term. Aliquot and store at -20C long term. Avoid freeze-thaw cycles.
Clonality	Monoclonal
Clone	23M14A10
Preservative	0.05% Sodium Azide
Isotype	IgG2a Kappa
Purity	Protein G purified
Buffer	PBS

Product Description	
Description	Novus Biologicals Rat Siglec-H Antibody (23M14A10) - BSA Free (NBP2-27061) is a monoclonal antibody validated for use in IHC, WB and Flow. Anti-Siglec-H Antibody: Cited in 1 publication. All Novus Biologicals antibodies are covered by our 100% guarantee.
Host	Rat
Gene ID	233274
Gene Symbol	Siglech
Species	Mouse
Immunogen	SKRSHTkRVERPATHMDQA (aa286-304)

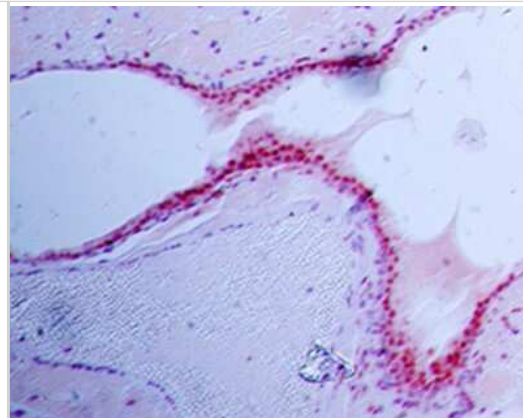
Product Application Details	
Applications	Western Blot, Immunohistochemistry-Paraffin, Flow Cytometry, Immunohistochemistry, CyTOF-ready
Recommended Dilutions	Western Blot 3-5ug/ml~, Flow Cytometry 1ug/10 ⁶ cells~, Immunohistochemistry, Immunohistochemistry-Paraffin 5ug/ml, CyTOF-ready
Application Notes	In IHC-P application, 1M EDTA buffer pH 9.0 was used for antigen retrieval. This antibody is CyTOF ready.

Images

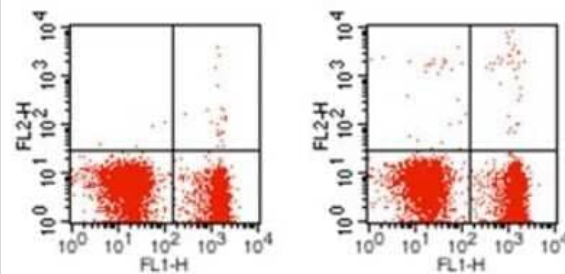
Western Blot: Siglec-H Antibody (23M14A10) [NBP2-27061] - WB analysis of mouse heart lysate using Siglec-H antibody (clone 23M14A10) at 3 ug/ml concentration.



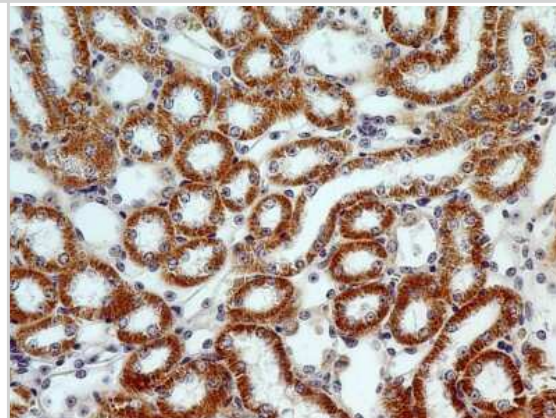
Immunohistochemistry-Paraffin: Siglec-H Antibody (23M14A10) [NBP2-27061] - IHC analysis of formalin-fixed paraffin-embedded tissue section of normal mouse lung using 5 ug/ml concentration of SiglecH antibody (clone 23M14A10). Alkaline Phosphatase based detection was used for final staining development.



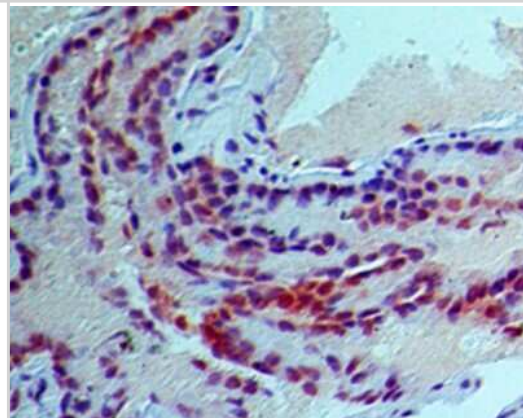
Flow Cytometry: Siglec-H Antibody (23M14A10) [NBP2-27061] - Analysis using the PE conjugate of NBP2-27061. Staining of freshly isolated Balb C mouse splenocytes with B220 (clone RA3-6B2) Alexa Fluor 488 antibody and with Rat IgG2a PE (isotype control, left) or anti-mouse Siglec H PE antibody (Clone: 23M14A10, right).



Immunohistochemistry-Paraffin: Siglec-H Antibody (23M14A10) [NBP2-27061] - IHC analysis of formalin-fixed paraffin-embedded tissue section of normal mouse kidney using 5 ug/ml concentration of SiglecH antibody (clone 23M14A10). The cells of various renal tubules showed specific immunopositivity for SiglecH.



Immunohistochemistry-Paraffin: Siglec-H Antibody (23M14A10) [NBP2-27061] - IHC analysis of formalin-fixed paraffin-embedded tissue section of normal mouse lung using 5 ug/ml concentration of SiglecH antibody (Clone 23M14A10). DAB based detection was used for final staining development.



Publications

Saiga H, Ueno M, Tanaka T Et al. Transcription factor MafB-mediated inhibition of type I interferons in plasmacytoid dendritic cells International immunology 2021-11-03 [PMID: 34734243]



Novus Biologicals USA

10730 E. Briarwood Avenue
Centennial, CO 80112
USA
Phone: 303.730.1950
Toll Free: 1.888.506.6887
Fax: 303.730.1966
nb-customerservice@bio-techne.com

Bio-Techne Canada

21 Canmotor Ave
Toronto, ON M8Z 4E6
Canada
Phone: 905.827.6400
Toll Free: 855.668.8722
Fax: 905.827.6402
canada.inquires@bio-techne.com

Bio-Techne Ltd

19 Barton Lane
Abingdon Science Park
Abingdon, OX14 3NB, United Kingdom
Phone: (44) (0) 1235 529449
Free Phone: 0800 37 34 15
Fax: (44) (0) 1235 533420
info.EMEA@bio-techne.com

General Contact Information

www.novusbio.com
Technical Support: nb-technical@bio-techne.com
Orders: nb-customerservice@bio-techne.com
General: novus@novusbio.com

Products Related to NBP2-27061

NBP2-33376H	Blue Marker Antibody (6F4-F6) [HRP]
HAF005	Goat anti-Rat IgG Secondary Antibody [HRP]
NB7115	Goat anti-Rat IgG (H+L) Secondary Antibody [HRP]
NBP1-43321-0.5mg	Rat IgG2a Kappa Light Chain Isotype Control (R2a)

Limitations

This product is for research use only and is not approved for use in humans or in clinical diagnosis. Primary Antibodies are guaranteed for 1 year from date of receipt.

For more information on our 100% guarantee, please visit www.novusbio.com/guarantee

Earn gift cards/discounts by submitting a review: www.novusbio.com/reviews/submit/NBP2-27061

Earn gift cards/discounts by submitting a publication using this product:
www.novusbio.com/publications

