

Product Datasheet

D4S234E Antibody NBP2-26148

Unit Size: 0.1 mg

Store at -20C. Avoid freeze-thaw cycles.

www.novusbio.com



technical@novusbio.com

Publications: 1

Protocols, Publications, Related Products, Reviews, Research Tools and Images at:
www.novusbio.com/NBP2-26148

Updated 9/9/2025 v.20.1

Earn rewards for product
reviews and publications.

Submit a publication at www.novusbio.com/publications

Submit a review at www.novusbio.com/reviews/destination/NBP2-26148



NBP2-26148

D4S234E Antibody

Product Information	
Unit Size	0.1 mg
Concentration	0.5 mg/ml
Storage	Store at -20C. Avoid freeze-thaw cycles.
Clonality	Polyclonal
Preservative	0.02% Sodium Azide
Isotype	IgG
Purity	Immunogen affinity purified
Buffer	Tris saline (20 mM Tris pH 7.3, 150 mM NaCl), 0.5% BSA

Product Description	
Description	Novus Biologicals Goat D4S234E Antibody (NBP2-26148) is a polyclonal antibody validated for use in WB, ELISA and ICC/IF. Anti-D4S234E Antibody: Cited in 1 publication. All Novus Biologicals antibodies are covered by our 100% guarantee.
Host	Goat
Gene ID	27065
Gene Symbol	NSG1
Species	Mouse, Rat
Immunogen	Peptide with sequence EKGTKQPLLEDGFD-C corresponding to N-Terminus according to NP_077042.2.

Product Application Details	
Applications	Western Blot, Immunocytochemistry/ Immunofluorescence, Peptide ELISA
Recommended Dilutions	Western Blot 0.1 - 0.3 ug/ml, Immunocytochemistry/ Immunofluorescence 1 - 5 ug/ml, Peptide ELISA Detection limit 1:128000
Application Notes	Western blot: Approx 22kDa band observed in Mouse fetal Brain lysates (calculated MW of 20.9kDa according to NP_035072.2). Primary incubation was 1 hour. Immunocytochemistry: Primary DIV9 cells from Hippocampus E18 Rat embryos, stained for neuronal marker MAP2 in blue and for glial marker GFAP in green showed exclusive labelling of EB11637 (red) in the neurons only.

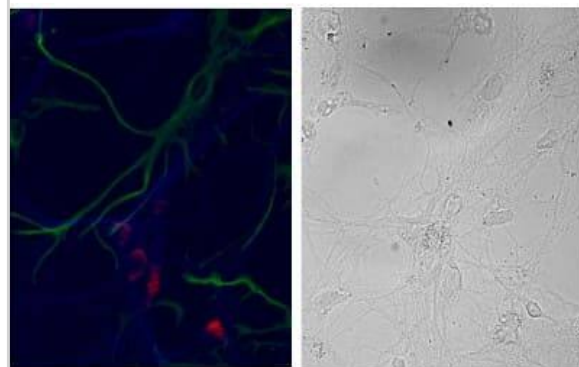


Images

Western Blot: D4S234E Antibody [NBP2-26148] - NBP2-26148 (0.1ug/ml) staining of fetal Mouse Brain lysate (35ug protein in RIPA buffer). Primary incubation was 1 hour. Detected by chemiluminescence.

250kDa
150kDa
100kDa
75kDa
50kDa
37kDa
25kDa
20kDa
15kDa

Immunocytochemistry/Immunofluorescence: D4S234E Antibody [NBP2-26148] - (3ug/ml) staining of primary DIV9 cells from Hippocampus E18 Rat embryos showed exclusive localization (red, Alexa 568) within the neurons (MAP2 staining in blue, Alexa 647) and not in the glia (GFAP staining in green, Alexa 488). Right panel shows



Publications

Yap CC, Wisco D, Kujala P et al. The somatodendritic endosomal regulator NEEP21 facilitates axonal targeting of L1/NgCAM. J Cell Biol 2008-02-25 [PMID: 18299352]



Novus Biologicals USA

10730 E. Briarwood Avenue
Centennial, CO 80112
USA
Phone: 303.730.1950
Toll Free: 1.888.506.6887
Fax: 303.730.1966
nb-customerservice@bio-techne.com

Bio-Techne Canada

21 Canmotor Ave
Toronto, ON M8Z 4E6
Canada
Phone: 905.827.6400
Toll Free: 855.668.8722
Fax: 905.827.6402
canada.inquires@bio-techne.com

Bio-Techne Ltd

19 Barton Lane
Abingdon Science Park
Abingdon, OX14 3NB, United Kingdom
Phone: (44) (0) 1235 529449
Free Phone: 0800 37 34 15
Fax: (44) (0) 1235 533420
info.EMEA@bio-techne.com

General Contact Information

www.novusbio.com
Technical Support: nb-technical@bio-techne.com
Orders: nb-customerservice@bio-techne.com
General: novus@novusbio.com

Products Related to NBP2-26148

NBP2-33376H	Blue Marker Antibody (6F4-F6) [HRP]
HAF017	Rabbit anti-Goat IgG Secondary Antibody [HRP (Horseradish Peroxidase)]
HAF109	Donkey anti-Goat IgG Secondary Antibody [HRP (Horseradish Peroxidase)]
NB410-28088-1mg	Goat IgG Isotype Control

Limitations

This product is for research use only and is not approved for use in humans or in clinical diagnosis. Primary Antibodies are guaranteed for 1 year from date of receipt.

For more information on our 100% guarantee, please visit www.novusbio.com/guarantee

Earn gift cards/discounts by submitting a review: www.novusbio.com/reviews/submit/NBP2-26148

Earn gift cards/discounts by submitting a publication using this product:
www.novusbio.com/publications



