

# Product Datasheet

## GEM Antibody NBP2-26121

Unit Size: 0.1 mg

Store at -20C. Avoid freeze-thaw cycles.

[www.novusbio.com](http://www.novusbio.com)



[technical@novusbio.com](mailto:technical@novusbio.com)

### Publications: 1

Protocols, Publications, Related Products, Reviews, Research Tools and Images at:  
[www.novusbio.com/NBP2-26121](http://www.novusbio.com/NBP2-26121)

Updated 9/9/2025 v.20.1

Earn rewards for product  
reviews and publications.

Submit a publication at [www.novusbio.com/publications](http://www.novusbio.com/publications)

Submit a review at [www.novusbio.com/reviews/destination/NBP2-26121](http://www.novusbio.com/reviews/destination/NBP2-26121)



**NBP2-26121**

GEM Antibody

Product Information	
Unit Size	0.1 mg
Concentration	0.5 mg/ml
Storage	Store at -20C. Avoid freeze-thaw cycles.
Clonality	Polyclonal
Preservative	0.02% Sodium Azide
Isotype	IgG
Purity	Immunogen affinity purified
Buffer	Tris saline (20 mM Tris pH 7.3, 150 mM NaCl), 0.5% BSA

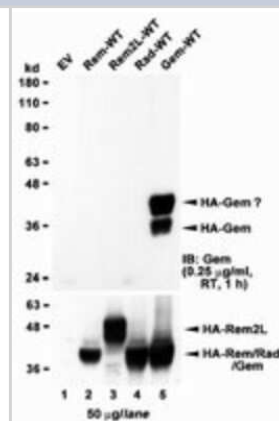
Product Description	
Description	Novus Biologicals Goat GEM Antibody (NBP2-26121) is a polyclonal antibody validated for use in WB and ELISA. Anti-GEM Antibody: Cited in 1 publication. All Novus Biologicals antibodies are covered by our 100% guarantee.
Host	Goat
Gene ID	2669
Gene Symbol	GEM
Species	Human
Specificity/Sensitivity	Reported variants represent identical protein: NP_005252.1, NP_859053.1
Immunogen	Peptide with sequence C-QKEPHQYSHRNRH corresponding to internal region according to NP_005252.1.

Product Application Details	
Applications	Western Blot, Peptide ELISA
Recommended Dilutions	Western Blot 1 - 3 ug/ml, Peptide ELISA Detection limit 1:16000
Application Notes	WB: In transfected HEK293 transiently expressing human recombinant GEM bands of approx. 35+45 kDa band are observed. These bands are not observed in the transfected HEK293 with empty vector and the antibody does not cross-react to related protein such as Rem, Rem2L or Rad, provided by Prof. R Andres, Univ. Kentucky, USA. A similar banding pattern is observed in human spleen. The calculated molecular size is 33.9 kDa band according to NP_005252.1.

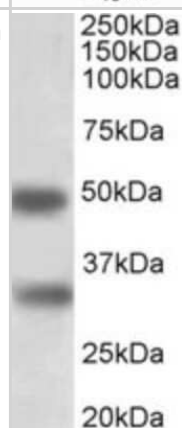


## Images

Western Blot: GEM Antibody [NBP2-26121] - HEK293 lysate overexpressing full-length Human GEM (HA tagged), mock-transfected HEK293 (EV) and HEK293 transiently expressing GEM-related genes (Rem, Rem2L and Rad) probed with NBP2-26121 (1ug/ml). The same lysates probed with anti-HA tag antibody in the lower panel.



Western Blot: GEM Antibody [NBP2-26121] - (1ug/ml) staining of Human Spleen lysate (35ug protein in RIPA buffer). Primary incubation was 1 hour. Detected by chemiluminescence.



## Publications

Wang A, Johnston SC, Chou J, Dean D. A systemic network for Chlamydia pneumoniae entry into human cells. J Bacteriol 2010-06-01 [PMID: 20233927]



### **Novus Biologicals USA**

10730 E. Briarwood Avenue  
Centennial, CO 80112  
USA  
Phone: 303.730.1950  
Toll Free: 1.888.506.6887  
Fax: 303.730.1966  
nb-customerservice@bio-techne.com

### **Bio-Techne Canada**

21 Canmotor Ave  
Toronto, ON M8Z 4E6  
Canada  
Phone: 905.827.6400  
Toll Free: 855.668.8722  
Fax: 905.827.6402  
canada.inquires@bio-techne.com

### **Bio-Techne Ltd**

19 Barton Lane  
Abingdon Science Park  
Abingdon, OX14 3NB, United Kingdom  
Phone: (44) (0) 1235 529449  
Free Phone: 0800 37 34 15  
Fax: (44) (0) 1235 533420  
info.EMEA@bio-techne.com

### **General Contact Information**

www.novusbio.com  
Technical Support: nb-technical@bio-techne.com  
Orders: nb-customerservice@bio-techne.com  
General: novus@novusbio.com

### **Products Related to NBP2-26121**

---

NBP2-33376H	Blue Marker Antibody (6F4-F6) [HRP]
HAF017	Rabbit anti-Goat IgG Secondary Antibody [HRP (Horseradish Peroxidase)]
HAF109	Donkey anti-Goat IgG Secondary Antibody [HRP (Horseradish Peroxidase)]
NB410-28088-1mg	Goat IgG Isotype Control

---

### **Limitations**

This product is for research use only and is not approved for use in humans or in clinical diagnosis. Primary Antibodies are guaranteed for 1 year from date of receipt.

For more information on our 100% guarantee, please visit [www.novusbio.com/guarantee](http://www.novusbio.com/guarantee)

Earn gift cards/discounts by submitting a review: [www.novusbio.com/reviews/submit/NBP2-26121](http://www.novusbio.com/reviews/submit/NBP2-26121)

Earn gift cards/discounts by submitting a publication using this product:  
[www.novusbio.com/publications](http://www.novusbio.com/publications)



