

Product Datasheet

TLR6 Antibody (86B1153.2) [PE] NBP2-24969

Unit Size: 0.1 ml

Store at 4C in the dark.

www.novusbio.com



technical@novusbio.com

Publications: 7

Protocols, Publications, Related Products, Reviews, Research Tools and Images at:
www.novusbio.com/NBP2-24969

Updated 10/23/2024 v.20.1

Earn rewards for product
reviews and publications.

Submit a publication at www.novusbio.com/publications

Submit a review at www.novusbio.com/reviews/destination/NBP2-24969



NBP2-24969

TLR6 Antibody (86B1153.2) [PE]

| Product Information | |
|----------------------------|---|
| Unit Size | 0.1 ml |
| Concentration | Please see the vial label for concentration. If unlisted please contact technical services. |
| Storage | Store at 4C in the dark. |
| Clonality | Monoclonal |
| Clone | 86B1153.2 |
| Preservative | 0.05% Sodium Azide |
| Isotype | IgG1 |
| Conjugate | PE |
| Purity | Protein G purified |
| Buffer | PBS |

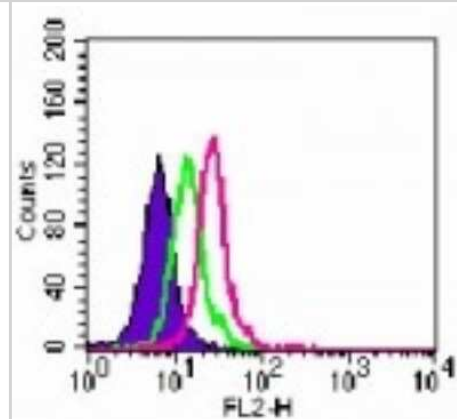
| Product Description | |
|--------------------------------|---|
| Host | Mouse |
| Gene ID | 10333 |
| Gene Symbol | TLR6 |
| Species | Human |
| Reactivity Notes | Cross reacts with Human. |
| Specificity/Sensitivity | TLR6 (86B1153.2) |
| Immunogen | This antibody was developed against a synthetic peptide corresponding to amino acids 408-424 of human TLR6. |

| Product Application Details | |
|------------------------------------|--|
| Applications | Flow Cytometry |
| Recommended Dilutions | Flow Cytometry 1ul/1 million cells |
| Application Notes | Optimal dilution of this antibody should be experimentally determined. |

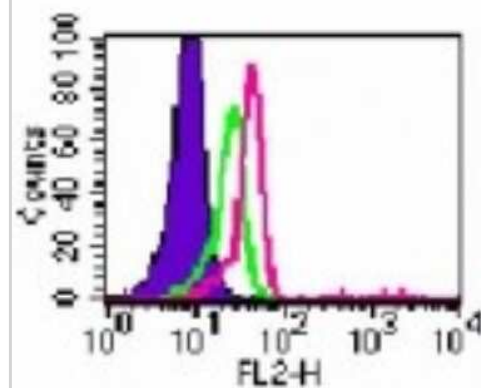


Images

Flow Cytometry: TLR6 Antibody (86B1153.2) [PE] [NBP2-24969] - Intracellular analysis of TLR6 in Ramos cells using this antibody. 5 ug/10⁶ cells. Shaded histogram represents Ramos cells without antibody; green represents isotype control (BD Pharmingen); red represents anti-TLR6 antibody.



Flow Cytometry: TLR6 Antibody (86B1153.2) [PE] [NBP2-24969] - Intracellular analysis of TLR6 in human PBMC cells using this antibody at 0.5 ug/10⁶ cells. Shaded histogram represents PBMC without antibody; green represents isotype control (BD Pharmingen); red represents this antibody.



Publications

van den Berk LC, Jansen BJ, Siebers-Vermeulen KG et al. Toll-like receptor triggering in cord blood mesenchymal stem cells. *J Cell Mol Med.* 2009-09-01 [PMID: 20196781] (Human)

Details:

flow (cell surface) cytometry: TLR5 (IMG-663A), TLR6 (IMG-304), TLR8 (IMG-321). Human mesenchymal stem cells, Fig 1C.

Pietschmann K, Beetz S, Welte S et al. Toll-like receptor expression and function in subsets of human gammadelta T lymphocytes. *Scand J Immunol.* 2009-09-01 [PMID: 19703014]

Wong CK, Cheung PF, Ip WK et al. Intracellular signaling mechanisms regulating toll-like receptor-mediated activation of eosinophils. *Am J Respir Cell Mol Biol.* 2007-07-01 [PMID: 17332440]

Details:

Human blood eosinophils and neutrophils from buffy coat: For WB, Fig. 1A: TLR1 (IMG-5012), TLR5 (IMG-664), TLR6 (IMG-304A), TLR7 (IMG-540), TLR8 (IMG-321A), TLR9 (IMG-305A). For Flow (Intracellular) and Flow (Surface), Fig. 1B: TLR1 (IMG-5021), TLR2 (IMG-416C), TLR3 (IMG-315C), TLR4 (IMG-417C), TLR5 (IMG-663C), TLR6 (IMG-304C), TLR7 (IMG-665A), TLR8 (IMG-321C), TLR9 (IMG-305C).

Murciano C, Villamon E, Yanez A et al. In vitro response to *Candida albicans* in cultures of whole human blood from young and aged donors. *FEMS Immunol Med Microbiol.* 2007-11-01 [PMID: 17714490]

Details:

The following antibodies were used in flow (cell surface) cytometry: TLR2/CD282 FITC (IMG-416C), TLR4 FITC (IMG-417C), TLR6/CD286 FITC (IMG-304C). Human whole blood from both young and elderly volunteers, Fig 1. Note: The fluorescence mean intensity was m

Pegu A, Qin S, Fallert Junecko BA et al. Human lymphatic endothelial cells express multiple functional TLRs. *J Immunol.* 2008-03-01 [PMID: 18292566]

Details:

Antibodies cited [Flow (Cell surface) and Flow (Intracellular), human lymphatic endothelial cells, Fig. 1D]: 1. IMG-663C (TLR5-FITC) 2. IMG-304C (TLR6-FITC).

Peiser M, Koeck J, Kirschning CJ et al. Human Langerhans cells selectively activated via Toll-like receptor 2 agonists acquire migratory and CD4+T cell stimulatory capacity. *J Leukoc Biol.* 2008-05-01 [PMID: 18252867]

Details:

IMG-304A Flow (Cell Surface), Fig. 1C [primary human Langerhans cells (LC), LC cells generated from monocytes, and dendritic cells generated from monocytes].

Oberg HH, Ly TT, Ussat S et al. Differential but direct abolishment of human regulatory T cell suppressive capacity by various TLR2 ligands. *J Immunol.* 2010-05-01 [PMID: 20363971]

Details:

Flow(intracellular) cytometry: TLR2/CD282 PE (IMG-416D) and TLR6/CD286 (IMG-304A). T cells and Tregs were separated from freshly isolated human PBMCs, Fig S3.



Novus Biologicals USA

10730 E. Briarwood Avenue
Centennial, CO 80112
USA
Phone: 303.730.1950
Toll Free: 1.888.506.6887
Fax: 303.730.1966
nb-customerservice@bio-techne.com

Bio-Techne Canada

21 Canmotor Ave
Toronto, ON M8Z 4E6
Canada
Phone: 905.827.6400
Toll Free: 855.668.8722
Fax: 905.827.6402
canada.inquires@bio-techne.com

Bio-Techne Ltd

19 Barton Lane
Abingdon Science Park
Abingdon, OX14 3NB, United Kingdom
Phone: (44) (0) 1235 529449
Free Phone: 0800 37 34 15
Fax: (44) (0) 1235 533420
info.EMEA@bio-techne.com

General Contact Information

www.novusbio.com
Technical Support: nb-technical@bio-techne.com
Orders: nb-customerservice@bio-techne.com
General: novus@novusbio.com

Products Related to NBP2-24969

| | |
|----------------|---------------------------------------|
| NBP2-26219-2ug | MALP-2, TLR6 and TLR2 ligand |
| NBP1-97005PE | Mouse IgG1 Isotype Control (MG1) [PE] |
| NBP2-24791 | TLR6 Antibody (86B1153.2) [Biotin] |
| NBP2-57646PEP | TLR6 Recombinant Protein Antigen |

Limitations

This product is for research use only and is not approved for use in humans or in clinical diagnosis. Primary Antibodies are guaranteed for 1 year from date of receipt.

For more information on our 100% guarantee, please visit www.novusbio.com/guarantee

Earn gift cards/discounts by submitting a review: www.novusbio.com/reviews/submit/NBP2-24969

Earn gift cards/discounts by submitting a publication using this product:
www.novusbio.com/publications

