

Product Datasheet

TLR8 Antibody (44C143) [FITC] NBP2-24917F

Unit Size: 0.1 ml

Store at 4C in the dark.

www.novusbio.com



technical@novusbio.com

Protocols, Publications, Related Products, Reviews, Research Tools and Images at:
www.novusbio.com/NBP2-24917F

Updated 10/23/2024 v.20.1

Earn rewards for product
reviews and publications.

Submit a publication at www.novusbio.com/publications

Submit a review at www.novusbio.com/reviews/destination/NBP2-24917F



NBP2-24917F

TLR8 Antibody (44C143) [FITC]

Product Information	
Unit Size	0.1 ml
Concentration	Please see the vial label for concentration. If unlisted please contact technical services.
Storage	Store at 4C in the dark.
Clonality	Monoclonal
Clone	44C143
Preservative	0.05% Sodium Azide
Isotype	IgG1 Kappa
Conjugate	FITC
Purity	Protein G purified
Buffer	PBS

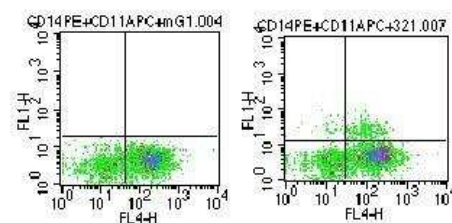
Product Description	
Host	Mouse
Gene ID	51311
Gene Symbol	TLR8
Species	Human, Mouse, Rabbit
Immunogen	This antibody was developed against a KLH-conjugated synthetic peptide of human TLR8, within amino acids 750-850.
Notes	This conjugate is made on demand. Actual recovery may vary from the stated volume of this product. The volume will be greater than or equal to the unit size stated on the datasheet.

Product Application Details	
Applications	Western Blot, Simple Western, Dot Blot, Flow Cytometry, Flow (Cell Surface), Flow (Intracellular), Immunocytochemistry/ Immunofluorescence, Immunohistochemistry, Immunohistochemistry-Paraffin, CyTOF-ready
Recommended Dilutions	Western Blot, Simple Western, Flow Cytometry, Immunohistochemistry, Immunocytochemistry/ Immunofluorescence, Immunohistochemistry-Paraffin, Dot Blot, Flow (Cell Surface), Flow (Intracellular), CyTOF-ready
Application Notes	Optimal dilution of this antibody should be experimentally determined.

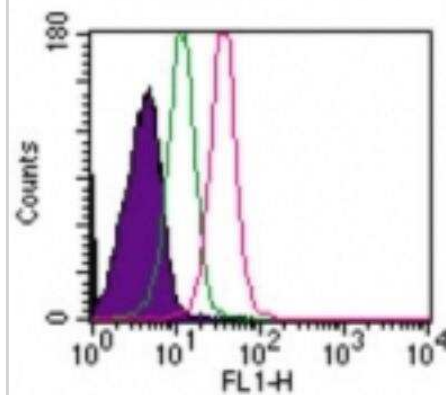


Images

Flow Cytometry: TLR8 Antibody (44C143) [FITC] [NBP2-24917F] - Analysis using the FITC conjugate of NBP2-24917. Staining of CD14⁻/CD11c⁺/TLR8⁺ myeloid dendritic cells (mDCs). Cells were stained for surface markers CD14 and CD11c, and intracellular stained for TLR8. CD14⁻ cells were gated and stained with FITC-conjugated TLR8 (NBP2-24917), and APC-conjugated CD11c (right).



Flow Cytometry: TLR8 Antibody (44C143) [FITC] [NBP2-24917F] - Analysis using the FITC conjugate of NBP2-24917. Staining of TLR8 in 10⁶ human lymphocytes using 1 ug of this antibody. The shaded histogram represents lymphocytes alone, green represents isotype control, and red represents TLR8 antibody.





Novus Biologicals USA

10730 E. Briarwood Avenue
Centennial, CO 80112
USA
Phone: 303.730.1950
Toll Free: 1.888.506.6887
Fax: 303.730.1966
nb-customerservice@bio-techne.com

Bio-Techne Canada

21 Canmotor Ave
Toronto, ON M8Z 4E6
Canada
Phone: 905.827.6400
Toll Free: 855.668.8722
Fax: 905.827.6402
canada.inquires@bio-techne.com

Bio-Techne Ltd

19 Barton Lane
Abingdon Science Park
Abingdon, OX14 3NB, United Kingdom
Phone: (44) (0) 1235 529449
Free Phone: 0800 37 34 15
Fax: (44) (0) 1235 533420
info.EMEA@bio-techne.com

General Contact Information

www.novusbio.com
Technical Support: nb-technical@bio-techne.com
Orders: nb-customerservice@bio-techne.com
General: novus@novusbio.com

Products Related to NBP2-24917F

NBP1-43319F	Mouse IgG1 Kappa Isotype Control (P3.6.2.8.1) [FITC]
NBP1-85767PEP	TLR8 Recombinant Protein Antigen
210-TA-005	TNF-alpha [Unconjugated]
NBP2-05618	TLR8 Overexpression Lysate

Limitations

This product is for research use only and is not approved for use in humans or in clinical diagnosis. Primary Antibodies are guaranteed for 1 year from date of receipt.

For more information on our 100% guarantee, please visit www.novusbio.com/guarantee

Earn gift cards/discounts by submitting a review: www.novusbio.com/reviews/submit/NBP2-24917F

Earn gift cards/discounts by submitting a publication using this product:
www.novusbio.com/publications

