

Product Datasheet

Vang-like Protein 2/VANGL2 Antibody NBP2-24704

Unit Size: 0.1 mg

Store at 4C short term. Aliquot and store at -20C long term. Avoid freeze-thaw cycles.

www.novusbio.com



technical@novusbio.com

Protocols, Publications, Related Products, Reviews, Research Tools and Images at:
www.novusbio.com/NBP2-24704

Updated 9/9/2025 v.20.1

Earn rewards for product
reviews and publications.

Submit a publication at www.novusbio.com/publications

Submit a review at www.novusbio.com/reviews/destination/NBP2-24704



NBP2-24704

Vang-like Protein 2/VANGL2 Antibody

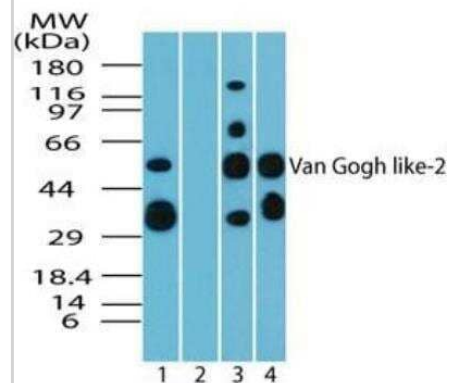
Product Information	
Unit Size	0.1 mg
Concentration	0.5 mg/ml
Storage	Store at 4C short term. Aliquot and store at -20C long term. Avoid freeze-thaw cycles.
Clonality	Polyclonal
Preservative	0.05% Sodium Azide
Isotype	IgG
Purity	Protein G purified
Buffer	PBS and 0.05% BSA

Product Description	
Description	Novus Biologicals Rabbit Vang-like Protein 2/VANGL2 Antibody (NBP2-24704) is a polyclonal antibody validated for use in IHC and WB. All Novus Biologicals antibodies are covered by our 100% guarantee.
Host	Rabbit
Gene ID	57216
Gene Symbol	VANGL2
Species	Human, Mouse, Rat, Bovine, Canine, Primate
Reactivity Notes	Chimpanzee (100%), Opossum, Equine (93%), Chicken, Xenopus (73%).
Specificity/Sensitivity	100% homologous in human isoform CRA_a, CRA_b and CRA_c).
Immunogen	A portion of amino acids 300-350 of human Van Gogh like-2 protein was used as the immunogen.

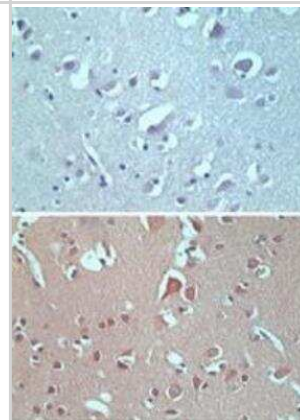
Product Application Details	
Applications	Western Blot, Immunohistochemistry-Paraffin, Immunohistochemistry
Recommended Dilutions	Western Blot 4-6 ug/ml, Immunohistochemistry, Immunohistochemistry-Paraffin

Images

Western Blot: Vang-like Protein 2/VANGL2 Antibody [NBP2-24704] - Analysis of Van Gogh like-2 in human brain lysate in the 1) absence and 2) presence of immunizing peptide, 3) mouse brain and 4) rat brain using this antibody. I goat anti-rabbit Ig HRP secondary antibody and PicoTect ECL substrate solution were used for this test.



Immunohistochemistry-Paraffin: Vang-like Protein 2/VANGL2 Antibody [NBP2-24704] - Analysis of Van Gogh like-2 in formalin-fixed, paraffin-embedded human brain tissue using an isotype control (top) and this antibody (bottom) at 5 ug/ml.





Novus Biologicals USA

10730 E. Briarwood Avenue
Centennial, CO 80112
USA
Phone: 303.730.1950
Toll Free: 1.888.506.6887
Fax: 303.730.1966
nb-customerservice@bio-techne.com

Bio-Techne Canada

21 Canmotor Ave
Toronto, ON M8Z 4E6
Canada
Phone: 905.827.6400
Toll Free: 855.668.8722
Fax: 905.827.6402
canada.inquires@bio-techne.com

Bio-Techne Ltd

19 Barton Lane
Abingdon Science Park
Abingdon, OX14 3NB, United Kingdom
Phone: (44) (0) 1235 529449
Free Phone: 0800 37 34 15
Fax: (44) (0) 1235 533420
info.EMEA@bio-techne.com

General Contact Information

www.novusbio.com
Technical Support: nb-technical@bio-techne.com
Orders: nb-customerservice@bio-techne.com
General: novus@novusbio.com

Products Related to NBP2-24704

NBP2-33376H	Blue Marker Antibody (6F4-F6) [HRP]
HAF008	Goat anti-Rabbit IgG Secondary Antibody [HRP]
NB7160	Goat anti-Rabbit IgG (H+L) Secondary Antibody [HRP]
NBP2-24891	Rabbit IgG Isotype Control

Limitations

This product is for research use only and is not approved for use in humans or in clinical diagnosis. Primary Antibodies are guaranteed for 1 year from date of receipt.

For more information on our 100% guarantee, please visit www.novusbio.com/guarantee

Earn gift cards/discounts by submitting a review: www.novusbio.com/reviews/submit/NBP2-24704

Earn gift cards/discounts by submitting a publication using this product:
www.novusbio.com/publications

