

# Product Datasheet

## Cyclin D1 Antibody NBP2-24695

Unit Size: 0.1 mg

Store at -20C. Avoid freeze-thaw cycles.

[www.novusbio.com](http://www.novusbio.com)



[technical@novusbio.com](mailto:technical@novusbio.com)

### Publications: 4

Protocols, Publications, Related Products, Reviews, Research Tools and Images at:  
[www.novusbio.com/NBP2-24695](http://www.novusbio.com/NBP2-24695)

Updated 12/11/2025 v.20.1

Earn rewards for product  
reviews and publications.

Submit a publication at [www.novusbio.com/publications](http://www.novusbio.com/publications)

Submit a review at [www.novusbio.com/reviews/destination/NBP2-24695](http://www.novusbio.com/reviews/destination/NBP2-24695)



**NBP2-24695**

## Cyclin D1 Antibody

Product Information	
Unit Size	0.1 mg
Concentration	1.0 mg/ml
Storage	Store at -20C. Avoid freeze-thaw cycles.
Clonality	Polyclonal
Preservative	0.05% Sodium Azide
Isotype	IgG
Purity	Protein A purified
Buffer	PBS

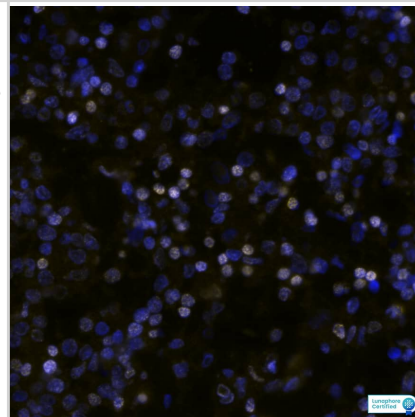
Product Description	
Description	Novus Biologicals Rabbit Cyclin D1 Antibody (NBP2-24695) is a polyclonal antibody validated for use in Multiplex Immunofluorescence, IHC and WB. Anti-Cyclin D1 Antibody: Cited in 4 publications. All Novus Biologicals antibodies are covered by our 100% guarantee.
Host	Rabbit
Gene ID	595
Gene Symbol	CCND1
Species	Human
Reactivity Notes	The eIF3J amino acid sequence used as immunogen for this antibody is 100% homologous in horse, chimpanzee, rat, dog, mouse, orangutan, opossum and platypus, 94% homologous in cow, zebrafish and chicken and 76% homologous in Tetradon .
Immunogen	A portion of amino acid 250 to 300 of human Cyclin D1 was used as immunogen.

Product Application Details	
Applications	Western Blot, Immunohistochemistry-Paraffin, Immunohistochemistry, Multiplex Immunofluorescence
Recommended Dilutions	Western Blot 4-6 ug/ml, Immunohistochemistry, Immunohistochemistry-Paraffin 5-10 ug/ml, Multiplex Immunofluorescence 25ug/mL

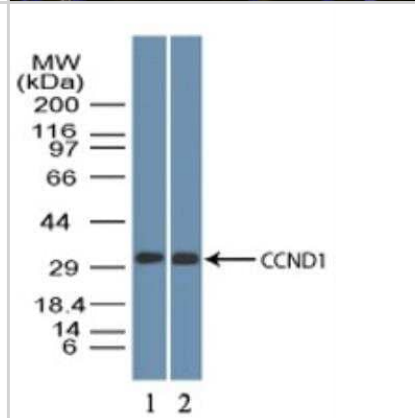


## Images

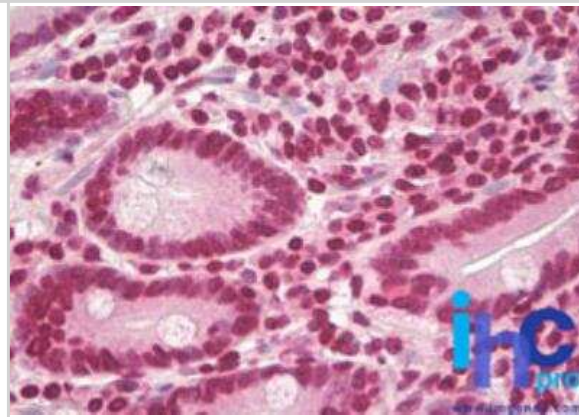
CCND1 was detected in immersion fixed paraffin-embedded sections of human Hodgkin's Lymphoma using Rabbit Anti-Human CCND1, Monoclonal Antibody (Catalog #NBP2-24695) at 25ug/mL at 37 ° Celsius for 4 minutes. Before incubation with the primary antibody, tissue underwent an all-in-one dewaxing and antigen retrieval preprocessing using PreTreatment Module (PT Module) and Dewax and HIER Buffer H (pH 9; EpreDia Catalog # TA-999-DHBH). Tissue was stained using the Alexa Fluor™ Plus 647 Goat anti-Rabbit IgG Secondary Antibody at 1:200 at 37 ° Celsius for 2 minutes. (Yellow; Lunaphore Catalog # [DR647RB](#)) and counterstained with DAPI (blue; Lunaphore Catalog # [DR100](#)). Specific staining was localized to the nucleus. Protocol available in [COMET™ Panel Builder](#).



Western Blot: Cyclin D1 Antibody [NBP2-24695] - Analysis of 1) mouse C2C12 and 2) mouse NIH 3T3 lysate using Cyclin D1 antibody at 5 ug/ml. Goat anti-rabbit Ig HRP secondary antibody and PicoTect ECL substrate solution were used for this test.



Immunohistochemistry-Paraffin: Cyclin D1 Antibody [NBP2-24695] - Formalin-fixed, paraffin-embedded human small intestine stained with Cyclin D1 antibody at 10 ug/ml.



## Publications

Burda JE, O'Shea TM, Ao Y et al. Divergent transcriptional regulation of astrocyte reactivity across disorders Nature 2022-05-25 [PMID: 35614216] (IHC-Fr, Mouse)

Bimonte, S;Cascella, M;Barbieri, A;Arra, C;Cuomo, A; Shining a Light on the Effects of the Combination of (-)-Epigallocatechin-3-gallate and Tapentadol on the Growth of Human Triple-negative Breast Cancer Cells In Vivo 2019 -06-24 [PMID: 31471393] (Human)

Ray A, Vasudevan S, Sengupta S. 6-Shogaol Inhibits Breast Cancer Cells and Stem Cell-Like Spheroids by Modulation of Notch Signaling Pathway and Induction of Autophagic Cell Death. PLoS ONE 2015-09-11 [PMID: 26355461] (WB, Human)

Kamal A, Sreekanth K, Kumar PP et al. Synthesis and potential cytotoxic activity of new phenanthrylphenol-pyrrolobenzodiazepines. Eur J Med Chem. 2010-06-01 [PMID: 20171761]

### Details:

Products cited for western blot: 1. PARP (IMG-401A): MCF-7 cells treated with numerous compounds, Fig 7. 2. B-Tubulin (IMG-5180A): MCF-7 cells treated with PP-PBDs, Fig 6 and Fig 7. 3. Cytochrome C (IMG-101A): MCF-7 cells treated with numerous compounds,





### **Novus Biologicals USA**

10730 E. Briarwood Avenue  
Centennial, CO 80112  
USA  
Phone: 303.730.1950  
Toll Free: 1.888.506.6887  
Fax: 303.730.1966  
nb-customerservice@bio-techne.com

### **Bio-Techne Canada**

21 Canmotor Ave  
Toronto, ON M8Z 4E6  
Canada  
Phone: 905.827.6400  
Toll Free: 855.668.8722  
Fax: 905.827.6402  
canada.inquires@bio-techne.com

### **Bio-Techne Ltd**

19 Barton Lane  
Abingdon Science Park  
Abingdon, OX14 3NB, United Kingdom  
Phone: (44) (0) 1235 529449  
Free Phone: 0800 37 34 15  
Fax: (44) (0) 1235 533420  
info.EMEA@bio-techne.com

### **General Contact Information**

www.novusbio.com  
Technical Support: nb-technical@bio-techne.com  
Orders: nb-customerservice@bio-techne.com  
General: novus@novusbio.com

### **Products Related to NBP2-24695**

---

NBP2-33376H	Blue Marker Antibody (6F4-F6) [HRP]
HAF008	Goat anti-Rabbit IgG Secondary Antibody [HRP]
NB7160	Goat anti-Rabbit IgG (H+L) Secondary Antibody [HRP]
NBP2-24891	Rabbit IgG Isotype Control

---

### **Limitations**

This product is for research use only and is not approved for use in humans or in clinical diagnosis. Primary Antibodies are guaranteed for 1 year from date of receipt.

For more information on our 100% guarantee, please visit [www.novusbio.com/guarantee](http://www.novusbio.com/guarantee)

Earn gift cards/discounts by submitting a review: [www.novusbio.com/reviews/submit/NBP2-24695](http://www.novusbio.com/reviews/submit/NBP2-24695)

Earn gift cards/discounts by submitting a publication using this product:  
[www.novusbio.com/publications](http://www.novusbio.com/publications)

