

Product Datasheet

GLI-1 Antibody - BSA Free NBP2-24662

Unit Size: 0.1 mg

Store at -20C. Avoid freeze-thaw cycles.

www.novusbio.com



technical@novusbio.com

Protocols, Publications, Related Products, Reviews, Research Tools and Images at:
www.novusbio.com/NBP2-24662

Updated 9/9/2025 v.20.1

Earn rewards for product
reviews and publications.

Submit a publication at www.novusbio.com/publications

Submit a review at www.novusbio.com/reviews/destination/NBP2-24662



NBP2-24662

GLI-1 Antibody - BSA Free

Product Information	
Unit Size	0.1 mg
Concentration	1.0 mg/ml
Storage	Store at -20C. Avoid freeze-thaw cycles.
Clonality	Polyclonal
Preservative	0.05% Sodium Azide
Isotype	IgG
Purity	Protein A purified
Buffer	PBS

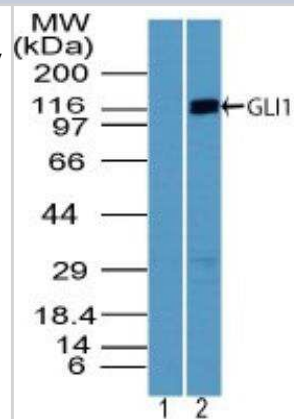
Product Description	
Description	Novus Biologicals Rabbit GLI-1 Antibody - BSA Free (NBP2-24662) is a polyclonal antibody validated for use in IHC, WB and ICC/IF. All Novus Biologicals antibodies are covered by our 100% guarantee.
Host	Rabbit
Gene ID	2735
Gene Symbol	GLI1
Species	Human
Immunogen	A portion of amino acids 940-990 of human GLI1 was used as the immunogen for this antibody.

Product Application Details	
Applications	Western Blot, Immunohistochemistry-Paraffin, Immunocytochemistry/Immunofluorescence, Immunohistochemistry
Recommended Dilutions	Western Blot 1-3 ug/ml, Immunohistochemistry, Immunocytochemistry/Immunofluorescence 10 ug/ml, Immunohistochemistry-Paraffin 5 ug/ml

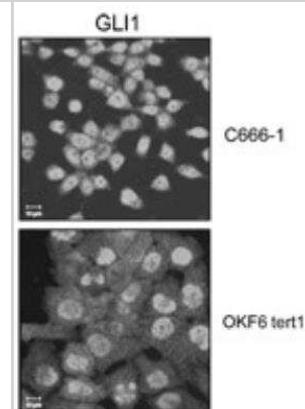


Images

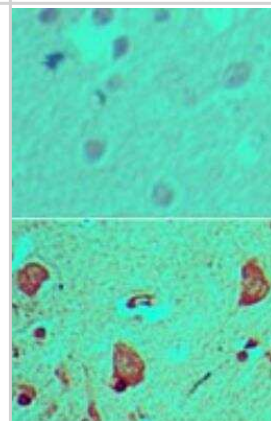
Western Blot: GLI-1 Antibody [NBP2-24662] - Analysis of human kidney lysate using 1) pre-immune sera at 1:5000 dilution and 2) GLI-1 antibody at 1 ug/ml. Goat anti-rabbit IgG HRP secondary antibody and PicoTect ECL substrate solution were used for this test.



Immunocytochemistry/Immunofluorescence: GLI-1 Antibody [NBP2-24662] - staining of GLI-1 at 10 ug/ml. Top panel: C666-1 malignant human nasopharyngeal carcinoma cell line. Bottom panel: OKF6 tert-1 human oral epithelial cell line. GLI-1 was more highly expressed in the C666-1 than in the OKF6 tert-1 cells. See application notes for protocol details.



Immunohistochemistry-Paraffin: GLI-1 Antibody [NBP2-24662] - Formalin-fixed, paraffin-embedded human brain tissue stained with an isotype control antibody (top) and GLI-1 antibody (bottom) at 5 ug/ml.



Procedures

Immunocytochemistry/Immunofluorescence Protocol for Gli1 Antibody (NBP2-24662)

GLI-1 Antibody:

For IF, the GLI1 antibody was used at 10 ug/ml (Hu, 2010).

Protocol: Cells were washed in PBS and fixed in 4% PFA, pH 7.4 (20g PFA in 500 ml PBS) for 10 min. The fixed cells were permeabilized in 0.5% Triton X-100 (in PBS) for 5 min and blocking in 50 ul of 20% HINGS (heat inactivated normal goat serum diluted in PBS) for 1 hr. The GLI1 antibody was incubated at 37 degrees C for 1 hr or at 4 degrees C overnight. Following 3 X 5 min washes in PBS, an AlexaFluor488 or 594-conjugated goat anti-rabbit antibody was used as a second step (diluted in 20% HINGS at 1:1000 for 1 hr at room temperature in the dark). Following 3 X 5 min washes in PBS, the slides were mounted with DABCO (1,4-diazabicyclo[2.2.2]octane) anti-fading agent for fluorescence microscopy.





Novus Biologicals USA

10730 E. Briarwood Avenue
Centennial, CO 80112
USA
Phone: 303.730.1950
Toll Free: 1.888.506.6887
Fax: 303.730.1966
nb-customerservice@bio-techne.com

Bio-Techne Canada

21 Canmotor Ave
Toronto, ON M8Z 4E6
Canada
Phone: 905.827.6400
Toll Free: 855.668.8722
Fax: 905.827.6402
canada.inquires@bio-techne.com

Bio-Techne Ltd

19 Barton Lane
Abingdon Science Park
Abingdon, OX14 3NB, United Kingdom
Phone: (44) (0) 1235 529449
Free Phone: 0800 37 34 15
Fax: (44) (0) 1235 533420
info.EMEA@bio-techne.com

General Contact Information

www.novusbio.com
Technical Support: nb-technical@bio-techne.com
Orders: nb-customerservice@bio-techne.com
General: novus@novusbio.com

Products Related to NBP2-24662

NBP2-33376H	Blue Marker Antibody (6F4-F6) [HRP]
HAF008	Goat anti-Rabbit IgG Secondary Antibody [HRP]
NB7160	Goat anti-Rabbit IgG (H+L) Secondary Antibody [HRP]
NBP2-24891	Rabbit IgG Isotype Control

Limitations

This product is for research use only and is not approved for use in humans or in clinical diagnosis. Primary Antibodies are guaranteed for 1 year from date of receipt.

For more information on our 100% guarantee, please visit www.novusbio.com/guarantee

Earn gift cards/discounts by submitting a review: www.novusbio.com/reviews/submit/NBP2-24662

Earn gift cards/discounts by submitting a publication using this product:
www.novusbio.com/publications

