

# Product Datasheet

## Latexin Antibody NBP2-24530

Unit Size: 0.1 mg

Store at -20C. Avoid freeze-thaw cycles.

[www.novusbio.com](http://www.novusbio.com)



[technical@novusbio.com](mailto:technical@novusbio.com)

Protocols, Publications, Related Products, Reviews, Research Tools and Images at:  
[www.novusbio.com/NBP2-24530](http://www.novusbio.com/NBP2-24530)

Updated 9/9/2025 v.20.1

Earn rewards for product  
reviews and publications.

Submit a publication at [www.novusbio.com/publications](http://www.novusbio.com/publications)

Submit a review at [www.novusbio.com/reviews/destination/NBP2-24530](http://www.novusbio.com/reviews/destination/NBP2-24530)



**NBP2-24530**

Latexin Antibody

Product Information	
Unit Size	0.1 mg
Concentration	0.5 mg/ml
Storage	Store at -20C. Avoid freeze-thaw cycles.
Clonality	Polyclonal
Preservative	0.05% Sodium Azide
Isotype	IgG
Purity	Immunogen affinity purified
Buffer	PBS and 0.05% BSA

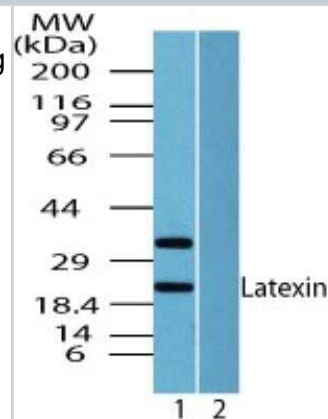
Product Description	
Description	Novus Biologicals Rabbit Latexin Antibody (NBP2-24530) is a polyclonal antibody validated for use in IHC, WB and Flow. All Novus Biologicals antibodies are covered by our 100% guarantee.
Host	Rabbit
Gene ID	56925
Gene Symbol	LXN
Species	Human, Mouse, Rat, Bovine
Immunogen	A portion of amino acids 200-222 of human Latexin was used as the immunogen for the antibody.

Product Application Details	
Applications	Western Blot, Immunohistochemistry-Paraffin, Flow (Intracellular), Immunohistochemistry
Recommended Dilutions	Western Blot 0.01-0.1 ug/ml, Immunohistochemistry, Immunohistochemistry-Paraffin 5 ug/ml, Flow (Intracellular) 1:1000



## Images

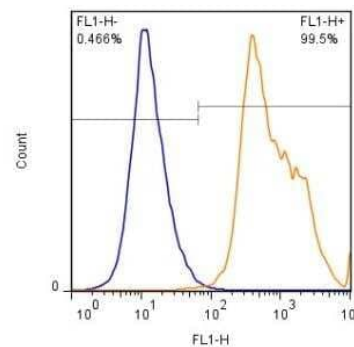
Western Blot: Latexin Antibody [NBP2-24530] - Analysis of Latexin in human pancreas lysate in the 1) absence and 2) presence of immunizing peptide using Latexin antibody at 0.01 ug/ml.



Immunohistochemistry-Paraffin: Latexin Antibody [NBP2-24530] - Formalin-fixed paraffin-embedded human small intestine stained with Latexin antibody at 5 ug/ml. Staining of formalin-fixed tissues is enhanced by boiling tissue sections in 10 mM sodium citrate buffer, pH 6.0 for 10-20 min followed by cooling at RT for 20 min.



Flow (Intracellular): Latexin Antibody [NBP2-24530] - Cytoplasmic staining of PBMC's (lymphocyte gate at  $1 \times 10^6$  cells/ml) with Latexin antibody (orange) stained at a dilution of 1:1000. Detected with a GtxRb Dylight 488 secondary. Shown with the secondary control (blue).





### **Novus Biologicals USA**

10730 E. Briarwood Avenue  
Centennial, CO 80112  
USA  
Phone: 303.730.1950  
Toll Free: 1.888.506.6887  
Fax: 303.730.1966  
nb-customerservice@bio-techne.com

### **Bio-Techne Canada**

21 Canmotor Ave  
Toronto, ON M8Z 4E6  
Canada  
Phone: 905.827.6400  
Toll Free: 855.668.8722  
Fax: 905.827.6402  
canada.inquires@bio-techne.com

### **Bio-Techne Ltd**

19 Barton Lane  
Abingdon Science Park  
Abingdon, OX14 3NB, United Kingdom  
Phone: (44) (0) 1235 529449  
Free Phone: 0800 37 34 15  
Fax: (44) (0) 1235 533420  
info.EMEA@bio-techne.com

### **General Contact Information**

www.novusbio.com  
Technical Support: nb-technical@bio-techne.com  
Orders: nb-customerservice@bio-techne.com  
General: novus@novusbio.com

### **Products Related to NBP2-24530**

---

NBP2-33376H	Blue Marker Antibody (6F4-F6) [HRP]
HAF008	Goat anti-Rabbit IgG Secondary Antibody [HRP]
NB7160	Goat anti-Rabbit IgG (H+L) Secondary Antibody [HRP]
NBP2-24891	Rabbit IgG Isotype Control

---

### **Limitations**

This product is for research use only and is not approved for use in humans or in clinical diagnosis. Primary Antibodies are guaranteed for 1 year from date of receipt.

For more information on our 100% guarantee, please visit [www.novusbio.com/guarantee](http://www.novusbio.com/guarantee)

Earn gift cards/discounts by submitting a review: [www.novusbio.com/reviews/submit/NBP2-24530](http://www.novusbio.com/reviews/submit/NBP2-24530)

Earn gift cards/discounts by submitting a publication using this product:  
[www.novusbio.com/publications](http://www.novusbio.com/publications)

