

Product Datasheet

TFG Antibody NBP2-24485

Unit Size: 0.1 mg

Store at -20C. Avoid freeze-thaw cycles.

www.novusbio.com



technical@novusbio.com

Publications: 3

Protocols, Publications, Related Products, Reviews, Research Tools and Images at:
www.novusbio.com/NBP2-24485

Updated 9/9/2025 v.20.1

Earn rewards for product
reviews and publications.

Submit a publication at www.novusbio.com/publications

Submit a review at www.novusbio.com/reviews/destination/NBP2-24485



NBP2-24485

TFG Antibody

Product Information	
Unit Size	0.1 mg
Concentration	0.5 mg/ml
Storage	Store at -20C. Avoid freeze-thaw cycles.
Clonality	Polyclonal
Preservative	0.05% Sodium Azide
Isotype	IgG
Purity	Immunogen affinity purified
Buffer	PBS and 0.05% BSA

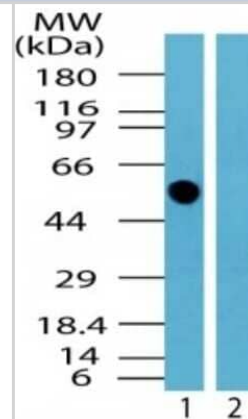
Product Description	
Description	Novus Biologicals Rabbit TFG Antibody (NBP2-24485) is a polyclonal antibody validated for use in IHC, WB and ICC/IF. Anti-TFG Antibody: Cited in 3 publications. All Novus Biologicals antibodies are covered by our 100% guarantee.
Host	Rabbit
Gene ID	10342
Gene Symbol	TFG
Species	Human, Rat, Primate
Reactivity Notes	Immunogen displays the following percentage of sequence identity for non-tested species: Opossum (88%), Chicken (82%).
Immunogen	A portion of amino acids 350-400 of human TFG was used as the immunogen for this antibody.

Product Application Details	
Applications	Western Blot, Immunohistochemistry-Paraffin, Immunocytochemistry/Immunofluorescence, Immunohistochemistry
Recommended Dilutions	Western Blot 0.5-2 ug/ml, Immunohistochemistry, Immunocytochemistry/Immunofluorescence reported in scientific literature (PMID 29093022), Immunohistochemistry-Paraffin 10 ug/ml

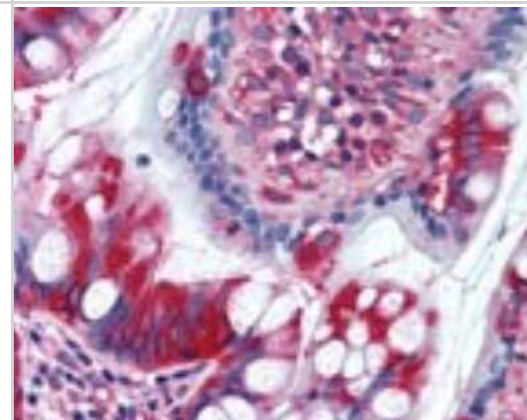


Images

Western Blot: TFG Antibody [NBP2-24485] - Analysis of human TFG in human brain lysate in the 1) absence and 2) presence of immunizing peptide using TFG antibody at 0.5 ug/ml.



Immunohistochemistry-Paraffin: TFG Antibody [NBP2-24485] - IHC analysis of human small intestine using TFG antibody at 10 ug/ml.



Publications

McCaughey J, Stevenson NL, Mantell JM et al. A general role for TANGO1, encoded by MIA3, in secretory pathway organization and function *Journal of Cell Science* 2021-09-01 [PMID: 34350936] (Immunocytochemistry/Immunofluorescence, Human)

Khan KA TRK-Fused Gene (TFG), a protein involved in protein secretion pathways, is an essential component of the antiviral innate immune response *PloS Pathog* 2021-01-07 [PMID: 33411856]

Stevenson Nicola L, Bergen Dylan J M, Skinner Roderick E H et al. Giantin-knockout models reveal a feedback loop between Golgi function and glycosyltransferase expression. *Journal of Cell Science* 2017-12-15 [PMID: 29093022] (ICC/IF, Human)



Novus Biologicals USA

10730 E. Briarwood Avenue
Centennial, CO 80112
USA
Phone: 303.730.1950
Toll Free: 1.888.506.6887
Fax: 303.730.1966
nb-customerservice@bio-techne.com

Bio-Techne Canada

21 Canmotor Ave
Toronto, ON M8Z 4E6
Canada
Phone: 905.827.6400
Toll Free: 855.668.8722
Fax: 905.827.6402
canada.inquires@bio-techne.com

Bio-Techne Ltd

19 Barton Lane
Abingdon Science Park
Abingdon, OX14 3NB, United Kingdom
Phone: (44) (0) 1235 529449
Free Phone: 0800 37 34 15
Fax: (44) (0) 1235 533420
info.EMEA@bio-techne.com

General Contact Information

www.novusbio.com
Technical Support: nb-technical@bio-techne.com
Orders: nb-customerservice@bio-techne.com
General: novus@novusbio.com

Products Related to NBP2-24485

NBP2-33376H	Blue Marker Antibody (6F4-F6) [HRP]
HAF008	Goat anti-Rabbit IgG Secondary Antibody [HRP]
NB7160	Goat anti-Rabbit IgG (H+L) Secondary Antibody [HRP]
NBP2-24891	Rabbit IgG Isotype Control

Limitations

This product is for research use only and is not approved for use in humans or in clinical diagnosis. Primary Antibodies are guaranteed for 1 year from date of receipt.

For more information on our 100% guarantee, please visit www.novusbio.com/guarantee

Earn gift cards/discounts by submitting a review: www.novusbio.com/reviews/submit/NBP2-24485

Earn gift cards/discounts by submitting a publication using this product:
www.novusbio.com/publications

