

Product Datasheet

PRAME Antibody - BSA Free NBP2-23670

Unit Size: 0.1 ml

Store at 4C short term. Aliquot and store at -20C long term. Avoid freeze-thaw cycles.

www.novusbio.com



technical@novusbio.com

Protocols, Publications, Related Products, Reviews, Research Tools and Images at:
www.novusbio.com/NBP2-23670

Updated 9/9/2025 v.20.1

Earn rewards for product
reviews and publications.

Submit a publication at www.novusbio.com/publications

Submit a review at www.novusbio.com/reviews/destination/NBP2-23670



NBP2-23670

PRAME Antibody - BSA Free

Product Information	
Unit Size	0.1 ml
Concentration	This product is unpurified. The exact concentration of antibody is not quantifiable.
Storage	Store at 4C short term. Aliquot and store at -20C long term. Avoid freeze-thaw cycles.
Clonality	Polyclonal
Preservative	0.025% Sodium Azide
Isotype	IgG
Purity	Unpurified
Buffer	Whole sera with 50% Glycerol

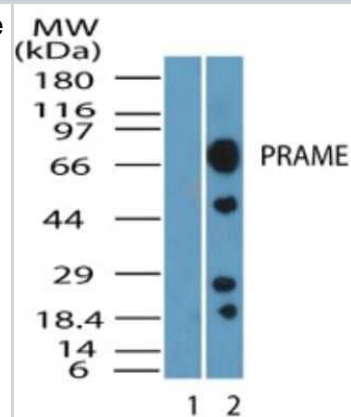
Product Description	
Description	Novus Biologicals Rabbit PRAME Antibody - BSA Free (NBP2-23670) is a polyclonal antibody validated for use in WB and Simple Western. All Novus Biologicals antibodies are covered by our 100% guarantee.
Host	Rabbit
Gene ID	23532
Gene Symbol	PRAME
Species	Human
Reactivity Notes	Immunogen displays the following percentage of sequence identity for non-tested species: chimpanzee (92%).
Immunogen	A portion of amino acid 460-509 of human PRAME was used as the immunogen for the antibody.

Product Application Details	
Applications	Western Blot, Simple Western
Recommended Dilutions	Western Blot 1:1000-1:5000, Simple Western 1:5000
Application Notes	In Simple Western only 10 - 15 uL of the recommended dilution is used per data point. See Simple Western Antibody Database for Simple Western validation: Tested in MCF-7 lysate 0.2 mg/mL, separated by Size, antibody dilution of 1:5000, apparent MW was 59 kDa.

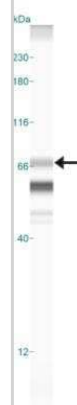


Images

Western Blot: PRAME Antibody [NBP2-23670] - Analysis of MCF7 lysate using 1) pre-immune sera and 2) PRAME antibody at 1:5000 dilution.



Simple Western: PRAME Antibody [NBP2-23670] - Simple Western lane view shows a specific band for PRAME in 0.2 mg/ml of MCF-7 lysate. This experiment was performed under reducing conditions using the 12-230 kDa separation system.





Novus Biologicals USA

10730 E. Briarwood Avenue
Centennial, CO 80112
USA
Phone: 303.730.1950
Toll Free: 1.888.506.6887
Fax: 303.730.1966
nb-customerservice@bio-techne.com

Bio-Techne Canada

21 Canmotor Ave
Toronto, ON M8Z 4E6
Canada
Phone: 905.827.6400
Toll Free: 855.668.8722
Fax: 905.827.6402
canada.inquires@bio-techne.com

Bio-Techne Ltd

19 Barton Lane
Abingdon Science Park
Abingdon, OX14 3NB, United Kingdom
Phone: (44) (0) 1235 529449
Free Phone: 0800 37 34 15
Fax: (44) (0) 1235 533420
info.EMEA@bio-techne.com

General Contact Information

www.novusbio.com
Technical Support: nb-technical@bio-techne.com
Orders: nb-customerservice@bio-techne.com
General: novus@novusbio.com

Products Related to NBP2-23670

NBP2-33376H	Blue Marker Antibody (6F4-F6) [HRP]
HAF008	Goat anti-Rabbit IgG Secondary Antibody [HRP]
NB7160	Goat anti-Rabbit IgG (H+L) Secondary Antibody [HRP]
NBP2-24891	Rabbit IgG Isotype Control

Limitations

This product is for research use only and is not approved for use in humans or in clinical diagnosis. Primary Antibodies are guaranteed for 1 year from date of receipt.

For more information on our 100% guarantee, please visit www.novusbio.com/guarantee

Earn gift cards/discounts by submitting a review: www.novusbio.com/reviews/submit/NBP2-23670

Earn gift cards/discounts by submitting a publication using this product:
www.novusbio.com/publications

