

Product Datasheet

Recombinant Human HFE His Protein NBP2-23110

Unit Size: 0.1 mg

Store at 4C short term. Aliquot and store at -20C long term. Avoid freeze-thaw cycles.

www.novusbio.com



technical@novusbio.com

Protocols, Publications, Related Products, Reviews, Research Tools and Images at:
www.novusbio.com/NBP2-23110

Updated 10/23/2024 v.20.1

Earn rewards for product
reviews and publications.

Submit a publication at www.novusbio.com/publications

Submit a review at www.novusbio.com/reviews/destination/NBP2-23110



NBP2-23110

Recombinant Human HFE His Protein

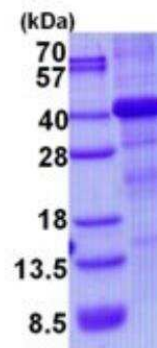
Product Information	
Unit Size	0.1 mg
Concentration	1 mg/ml
Storage	Store at 4C short term. Aliquot and store at -20C long term. Avoid freeze-thaw cycles.
Preservative	No Preservative
Purity	>85%, by SDS-PAGE
Buffer	20 mM Tris-HCl buffer (pH 8.0), 0.4M UREA, 10% glycerol
Target Molecular Weight	35.7 kDa

Product Description	
Description	<p>A denatured recombinant protein with a N-Terminal His-tag and corresponding to the amino acids 23-306 of Human HFE</p> <p>Source: <i>E.coli</i></p> <p>Amino Acid Sequence: MGSSHHHHHH SGLVPRGSH MGSMRLLRSH SLHYLFMGAS EQDLGLSLFE ALGYVDDQLF VFYDHESTRV EPRTPWVSSR ISSQMWLQLS QSLKGWDHMF TVDFWTIMEN HNHSKESHTL QVILGCEMQE DNSTEGYWKY GYDGGQDHLEF CPDTLDWRAA EPRAWPTKLE WERHKIRARQ NRAYLERDCP AQLQQLELG RGVLDQQVPP LVKVTHHVTS SVTTLRAL NYYPQNITMK WLKDKQPMDA KEFEPKDVLP NGDGTYYQGI TLAVPPGEEQ RYTCQVEHPG LDQPLIVIWE PPSGTLV</p>
Gene ID	3077
Gene Symbol	HFE
Species	Human

Product Application Details	
Applications	SDS-Page
Recommended Dilutions	SDS-Page
Application Notes	Denatured protein is most likely not the best option for functional studies. It is better suited for Western Blot (WB) or imaging assays.

Images

SDS-Page: Recombinant Human HFE Protein [NBP2-23110]



15% SDS-PAGE (3ug)



Novus Biologicals USA

10730 E. Briarwood Avenue
Centennial, CO 80112
USA
Phone: 303.730.1950
Toll Free: 1.888.506.6887
Fax: 303.730.1966
nb-customerservice@bio-techne.com

Bio-Techne Canada

21 Canmotor Ave
Toronto, ON M8Z 4E6
Canada
Phone: 905.827.6400
Toll Free: 855.668.8722
Fax: 905.827.6402
canada.inquires@bio-techne.com

Bio-Techne Ltd

19 Barton Lane
Abingdon Science Park
Abingdon, OX14 3NB, United Kingdom
Phone: (44) (0) 1235 529449
Free Phone: 0800 37 34 15
Fax: (44) (0) 1235 533420
info.EMEA@bio-techne.com

General Contact Information

www.novusbio.com
Technical Support: nb-technical@bio-techne.com
Orders: nb-customerservice@bio-techne.com
General: novus@novusbio.com

Products Related to NBP2-23110

NBP2-38702PEP	HFE Recombinant Protein Antigen
464-SH-025	Sonic Hedgehog/Shh [Unconjugated]
H00003077-M01	HFE Antibody (1G12)
NB600-600	GLI-1 Antibody - BSA Free

Limitations

This product is for research use only and is not approved for use in humans or in clinical diagnosis. Peptides and proteins are guaranteed for 3 months from date of receipt.

For more information on our 100% guarantee, please visit www.novusbio.com/guarantee

Earn gift cards/discounts by submitting a review: www.novusbio.com/reviews/submit/NBP2-23110

Earn gift cards/discounts by submitting a publication using this product:
www.novusbio.com/publications

