

# Product Datasheet

## CISD1 Antibody (1A8) - BSA Free NBP2-22567

Unit Size: 0.1 ml

Store at 4C short term. Aliquot and store at -20C long term. Avoid freeze-thaw cycles.

[www.novusbio.com](http://www.novusbio.com)



[technical@novusbio.com](mailto:technical@novusbio.com)

Protocols, Publications, Related Products, Reviews, Research Tools and Images at:  
[www.novusbio.com/NBP2-22567](http://www.novusbio.com/NBP2-22567)

Updated 9/9/2025 v.20.1

Earn rewards for product  
reviews and publications.

Submit a publication at [www.novusbio.com/publications](http://www.novusbio.com/publications)

Submit a review at [www.novusbio.com/reviews/destination/NBP2-22567](http://www.novusbio.com/reviews/destination/NBP2-22567)



**NBP2-22567**

CISD1 Antibody (1A8) - BSA Free

| Product Information |  |
|---------------------|--|
| Unit Size           | 0.1 ml   |
| Concentration       | 1 mg/ml  |
| Storage             | Store at 4C short term. Aliquot and store at -20C long term. Avoid freeze-thaw cycles. |
| Clonality           | Monoclonal   |
| Clone               | 1A8  |
| Preservative        | 0.02% Sodium Azide   |
| Isotype             | IgG1 Kappa   |
| Purity              | Protein A purified   |
| Buffer              | PBS (pH 7.4), 10% Glycerol   |

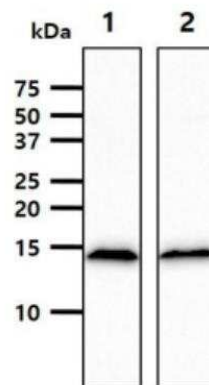
| Product Description |  |
|---------------------|--|
| Description         | Novus Biologicals Mouse CISD1 Antibody (1A8) - BSA Free (NBP2-22567) is a monoclonal antibody validated for use in WB, ELISA and Flow. All Novus Biologicals antibodies are covered by our 100% guarantee. |
| Host                | Mouse  |
| Gene ID             | 55847  |
| Gene Symbol         | CISD1  |
| Species             | Human  |
| Immunogen           | Recombinant human CISD1 (32-108aa) purified from E. coli   |

| Product Application Details |   |
|-----------------------------|---|
| Applications                | Western Blot, ELISA, Flow Cytometry                                 |
| Recommended Dilutions       | Western Blot 1:1000, Flow Cytometry 1:10-1:1000, ELISA 1:100-1:2000 |

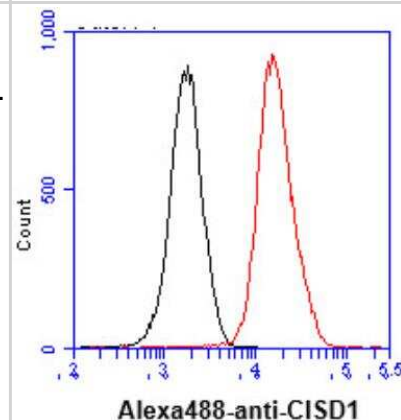


## Images

Western Blot: CISD1 Antibody (1A8) [NBP2-22567] - The cell lysates (40ug) were resolved by SDS-PAGE, transferred to PVDF membrane and probed with anti-human CISD1 antibody (1:1000). Proteins were visualized using a goat anti-mouse secondary antibody conjugated to HRP and an ECL detection system. Lane 1.: K562 cell lysate Lane 2.: MCF7 cell lysat



Flow Cytometry: CISD1 Antibody (1A8) [NBP2-22567] - Analysis of CISD1 in THP-1 cell line, staining at 2-5ug for 1x10<sup>6</sup> cells (red line). The secondary antibody used goat anti-mouse IgG Alexa fluor 488 conjugate. Isotype control antibody was mouse IgG (black line).



Western Blot: CISD1 Antibody (1A8) [NBP2-22567] - The extract of Mouse liver (40ug) were resolved by SDS-PAGE, transferred to PVDF membrane and probed with anti-human CISD1 antibody (1:1000). Proteins were visualized using a goat anti-mouse secondary antibody.





### **Novus Biologicals USA**

10730 E. Briarwood Avenue  
Centennial, CO 80112  
USA  
Phone: 303.730.1950  
Toll Free: 1.888.506.6887  
Fax: 303.730.1966  
nb-customerservice@bio-techne.com

### **Bio-Techne Canada**

21 Canmotor Ave  
Toronto, ON M8Z 4E6  
Canada  
Phone: 905.827.6400  
Toll Free: 855.668.8722  
Fax: 905.827.6402  
canada.inquires@bio-techne.com

### **Bio-Techne Ltd**

19 Barton Lane  
Abingdon Science Park  
Abingdon, OX14 3NB, United Kingdom  
Phone: (44) (0) 1235 529449  
Free Phone: 0800 37 34 15  
Fax: (44) (0) 1235 533420  
info.EMEA@bio-techne.com

### **General Contact Information**

www.novusbio.com  
Technical Support: nb-technical@bio-techne.com  
Orders: nb-customerservice@bio-techne.com  
General: novus@novusbio.com

### **Products Related to NBP2-22567**

---

|                  |  |
|------------------|--|
| NBP2-33376H      | Blue Marker Antibody (6F4-F6) [HRP]                |
| HAF007           | Goat anti-Mouse IgG Secondary Antibody [HRP]       |
| NB7539           | Goat anti-Mouse IgG (H+L) Secondary Antibody [HRP] |
| NBP1-43319-0.5mg | Mouse IgG1 Kappa Isotype Control (P3.6.2.8.1)      |

---

### **Limitations**

This product is for research use only and is not approved for use in humans or in clinical diagnosis. Primary Antibodies are guaranteed for 1 year from date of receipt.

For more information on our 100% guarantee, please visit [www.novusbio.com/guarantee](http://www.novusbio.com/guarantee)

Earn gift cards/discounts by submitting a review: [www.novusbio.com/reviews/submit/NBP2-22567](http://www.novusbio.com/reviews/submit/NBP2-22567)

Earn gift cards/discounts by submitting a publication using this product:  
[www.novusbio.com/publications](http://www.novusbio.com/publications)

