

Product Datasheet

beta COP Antibody NBP2-22544

Unit Size: 100uL

Store at -20C. Avoid freeze-thaw cycles.

www.novusbio.com



technical@novusbio.com

Publications: 1

Protocols, Publications, Related Products, Reviews, Research Tools and Images at:
www.novusbio.com/NBP2-22544

Updated 9/9/2025 v.20.1

Earn rewards for product
reviews and publications.

Submit a publication at www.novusbio.com/publications

Submit a review at www.novusbio.com/reviews/destination/NBP2-22544



NBP2-22544

beta COP Antibody

Product Information	
Unit Size	100uL
Concentration	4.4 mg/ml
Storage	Store at -20C. Avoid freeze-thaw cycles.
Clonality	Polyclonal
Preservative	0.05% Sodium Azide
Isotype	IgG
Purity	Ammonium sulfate precipitation
Buffer	PBS with 1 mg/ml BSA

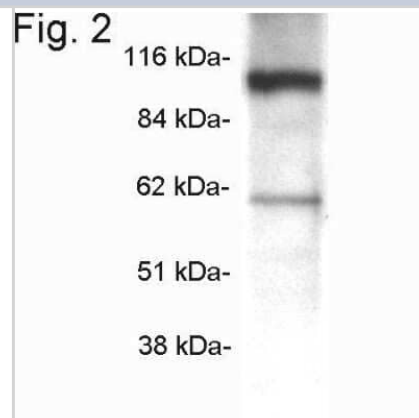
Product Description	
Description	Novus Biologicals Rabbit beta COP Antibody (NBP2-22544) is a polyclonal antibody validated for use in IHC, WB and ICC/IF. Anti-beta COP Antibody: Cited in 1 publication. All Novus Biologicals antibodies are covered by our 100% guarantee.
Host	Rabbit
Gene ID	1315
Gene Symbol	COPB1
Species	Human, Mouse, Rat
Immunogen	Synthetic peptide corresponding to residues E(496) A G E L K P E E E I T V G P V Q K(513) of rat beta-COP.

Product Application Details	
Applications	Western Blot, Immunocytochemistry/ Immunofluorescence, Immunohistochemistry
Recommended Dilutions	Western Blot 1:1000, Immunohistochemistry 1:10-1:500, Immunocytochemistry/ Immunofluorescence 1:2000
Application Notes	WB: Detects an approx. 110kDa protein which represents beta-COP from rat brain homogenate. Indirect IF: Staining of beta-COP in NIH-3T3 cells with NB120-2899 results in beta-COP localization to the Golgi complex and to distinct vesicular structures scattered throughout the cytoplasm. Golgi localization of beta-COP is sensitive to treatment with brefeldin A or ATP depletion.

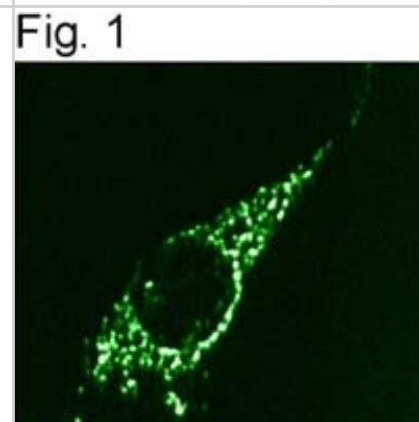


Images

Western Blot: beta COP Antibody [NBP2-22544] - Analysis of beta-COP from rat brain homogenate.



Immunocytochemistry/Immunofluorescence: beta COP Antibody [NBP2-22544] - Immunolocalization of beta-COP in NIH-3T3 cells.



Publications

Gallo R, Rai A, Pelkmas L. DYRK3-Controlled Phase Separation Organizes the Early Secretory Pathway Cells 2019-09-01 [PMID: 31470564]



Novus Biologicals USA

10730 E. Briarwood Avenue
Centennial, CO 80112
USA
Phone: 303.730.1950
Toll Free: 1.888.506.6887
Fax: 303.730.1966
nb-customerservice@bio-techne.com

Bio-Techne Canada

21 Canmotor Ave
Toronto, ON M8Z 4E6
Canada
Phone: 905.827.6400
Toll Free: 855.668.8722
Fax: 905.827.6402
canada.inquires@bio-techne.com

Bio-Techne Ltd

19 Barton Lane
Abingdon Science Park
Abingdon, OX14 3NB, United Kingdom
Phone: (44) (0) 1235 529449
Free Phone: 0800 37 34 15
Fax: (44) (0) 1235 533420
info.EMEA@bio-techne.com

General Contact Information

www.novusbio.com
Technical Support: nb-technical@bio-techne.com
Orders: nb-customerservice@bio-techne.com
General: novus@novusbio.com

Products Related to NBP2-22544

NBP2-33376H	Blue Marker Antibody (6F4-F6) [HRP]
HAF008	Goat anti-Rabbit IgG Secondary Antibody [HRP]
NB7160	Goat anti-Rabbit IgG (H+L) Secondary Antibody [HRP]
NBP2-24891	Rabbit IgG Isotype Control

Limitations

This product is for research use only and is not approved for use in humans or in clinical diagnosis. Primary Antibodies are guaranteed for 1 year from date of receipt.

For more information on our 100% guarantee, please visit www.novusbio.com/guarantee

Earn gift cards/discounts by submitting a review: www.novusbio.com/reviews/submit/NBP2-22544

Earn gift cards/discounts by submitting a publication using this product:
www.novusbio.com/publications

