

Product Datasheet

Cytohesin-1 Antibody (6G11)

NBP2-22513

Unit Size: 100ug

Store at -20C. Avoid freeze-thaw cycles.

www.novusbio.com



technical@novusbio.com

Protocols, Publications, Related Products, Reviews, Research Tools and Images at:
www.novusbio.com/NBP2-22513

Updated 9/9/2025 v.20.1

Earn rewards for product
reviews and publications.

Submit a publication at www.novusbio.com/publications

Submit a review at www.novusbio.com/reviews/destination/NBP2-22513



NBP2-22513**Cytohesin-1 Antibody (6G11)**

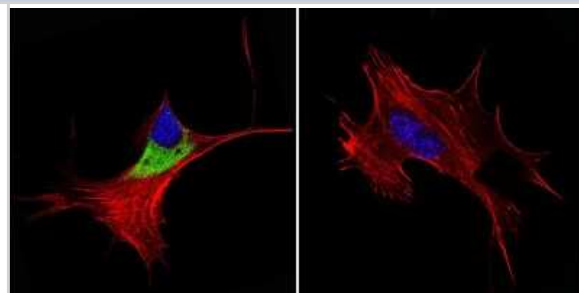
Product Information	
Unit Size	100ug
Concentration	1 mg/ml
Storage	Store at -20C. Avoid freeze-thaw cycles.
Clonality	Monoclonal
Clone	6G11
Preservative	0.05% Sodium Azide
Isotype	IgG1
Purity	PEG purified
Buffer	PBS with 1 mg/ml BSA

Product Description	
Description	Novus Biologicals Mouse Cytohesin-1 Antibody (6G11) (NBP2-22513) is a monoclonal antibody validated for use in IHC, WB, ICC/IF and IP. All Novus Biologicals antibodies are covered by our 100% guarantee.
Host	Mouse
Gene ID	9267
Gene Symbol	CYTH1
Species	Human
Immunogen	Purified, His-tagged cytohesin-1.

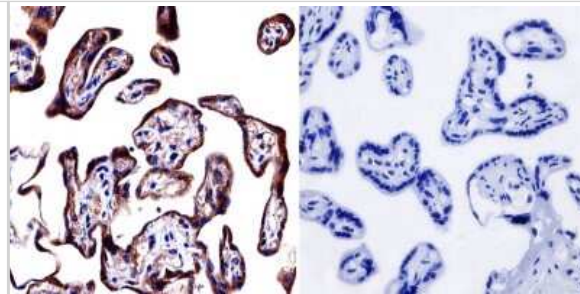
Product Application Details	
Applications	Western Blot, Immunohistochemistry-Paraffin, Immunocytochemistry/ Immunofluorescence, Immunohistochemistry, Immunoprecipitation
Recommended Dilutions	Western Blot 1.0 ug/ml, Immunohistochemistry 1:200 - 500, Immunocytochemistry/ Immunofluorescence 1:100, Immunoprecipitation 1:10 - 1:500, Immunohistochemistry-Paraffin 1:200 - 500
Application Notes	WB: Detects an approx. 48 kDa band representing both cytohesin-1 and cytohesin-2. IP: Only precipitates cytohesin-2.

Images

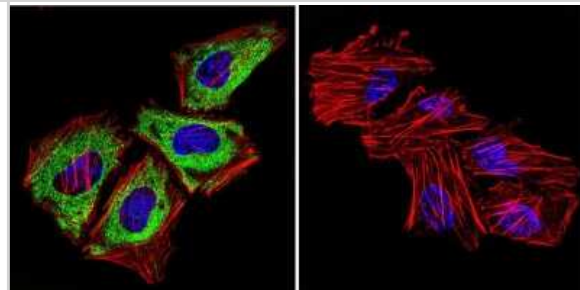
Immunocytochemistry/Immunofluorescence: Cytohesin-1 Antibody (6G11) [NBP2-22513] - Analysis of Cytohesin 1,2 in NIH-3T3 Cells. Cells were grown on chamber slides and fixed with formaldehyde prior to staining. Cells were probed without (control) or with a Cytohesin 1,2 monoclonal antibody at a dilution of 1:100 overnight at 4C, washed with PBS and incubated with a DyLight-488 conjugated secondary antibody. Cytohesin 1,2 staining (green), F-Actin staining with Phalloidin (red) and nuclei with DAPI (blue) is shown.



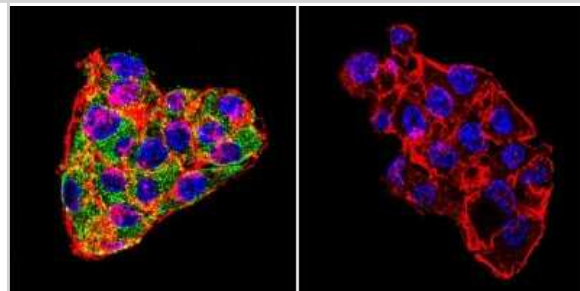
Immunohistochemistry: Cytohesin-1 Antibody (6G11) [NBP2-22513] - Normal biopsies of deparaffinized human placenta tissue.



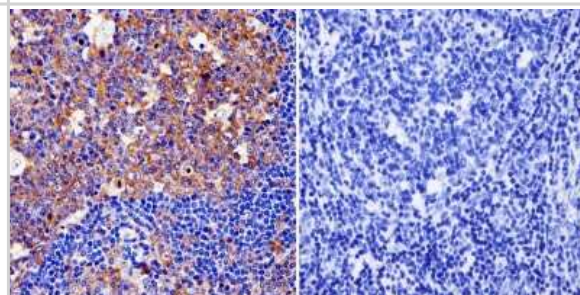
Immunocytochemistry/Immunofluorescence: Cytohesin-1 Antibody (6G11) [NBP2-22513] - Analysis of Cytohesin 1,2 in HeLa Cells. Cells were grown on chamber slides and fixed with formaldehyde prior to staining. Cells were probed without (control) or with a Cytohesin 1,2 monoclonal antibody at a dilution of 1:100 overnight at 4C, washed with PBS and incubated with a DyLight-488 conjugated secondary antibody. Cytohesin 1,2 staining (green), F-Actin staining with Phalloidin (red) and nuclei with DAPI (blue) is shown.



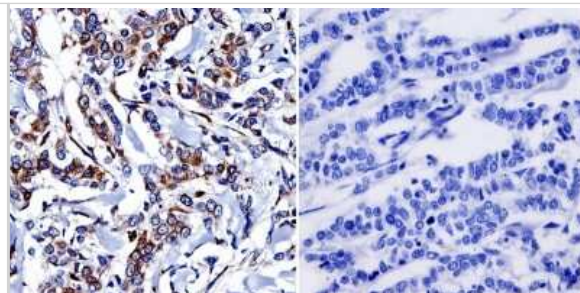
Immunocytochemistry/Immunofluorescence: Cytohesin-1 Antibody (6G11) [NBP2-22513] - Analysis of Cytohesin 1,2 in HepG2 Cells. Cells were grown on chamber slides and fixed with formaldehyde prior to staining. Cells were probed without (control) or with a Cytohesin 1,2 monoclonal antibody at a dilution of 1:100 overnight at 4C, washed with PBS and incubated with a DyLight-488 conjugated secondary antibody. Cytohesin 1,2 staining (green), F-Actin staining with Phalloidin (red) and nuclei with DAPI (blue) is shown.



Immunohistochemistry-Paraffin: Cytohesin-1 Antibody (6G11) [NBP2-22513] - Normal biopsies of deparaffinized human tonsil tissue.



Immunohistochemistry-Paraffin: Cytohesin-1 Antibody (6G11) [NBP2-22513] - Normal biopsies of deparaffinized human breast carcinoma.





Novus Biologicals USA

10730 E. Briarwood Avenue
Centennial, CO 80112
USA
Phone: 303.730.1950
Toll Free: 1.888.506.6887
Fax: 303.730.1966
nb-customerservice@bio-techne.com

Bio-Techne Canada

21 Canmotor Ave
Toronto, ON M8Z 4E6
Canada
Phone: 905.827.6400
Toll Free: 855.668.8722
Fax: 905.827.6402
canada.inquires@bio-techne.com

Bio-Techne Ltd

19 Barton Lane
Abingdon Science Park
Abingdon, OX14 3NB, United Kingdom
Phone: (44) (0) 1235 529449
Free Phone: 0800 37 34 15
Fax: (44) (0) 1235 533420
info.EMEA@bio-techne.com

General Contact Information

www.novusbio.com
Technical Support: nb-technical@bio-techne.com
Orders: nb-customerservice@bio-techne.com
General: novus@novusbio.com

Products Related to NBP2-22513

NBP2-33376H	Blue Marker Antibody (6F4-F6) [HRP]
HAF007	Goat anti-Mouse IgG Secondary Antibody [HRP]
NB7539	Goat anti-Mouse IgG (H+L) Secondary Antibody [HRP]
NBP1-97005-0.5mg	Mouse IgG1 Isotype Control (MG1)

Limitations

This product is for research use only and is not approved for use in humans or in clinical diagnosis. Primary Antibodies are guaranteed for 1 year from date of receipt.

For more information on our 100% guarantee, please visit www.novusbio.com/guarantee

Earn gift cards/discounts by submitting a review: www.novusbio.com/reviews/submit/NBP2-22513

Earn gift cards/discounts by submitting a publication using this product:
www.novusbio.com/publications

