

Product Datasheet

IP3R1 Antibody NBP2-22458

Unit Size: 100 uL

Store at -20C. Avoid freeze-thaw cycles.

www.novusbio.com



technical@novusbio.com

Publications: 2

Protocols, Publications, Related Products, Reviews, Research Tools and Images at:
www.novusbio.com/NBP2-22458

Updated 9/9/2025 v.20.1

Earn rewards for product
reviews and publications.

Submit a publication at www.novusbio.com/publications

Submit a review at www.novusbio.com/reviews/destination/NBP2-22458



NBP2-22458

IP3R1 Antibody

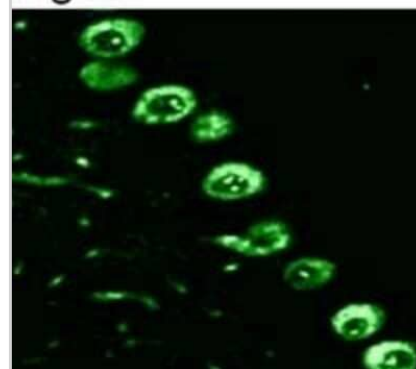
Product Information	
Unit Size	100 uL
Concentration	1.3 mg/ml
Storage	Store at -20C. Avoid freeze-thaw cycles.
Clonality	Polyclonal
Preservative	0.05% Sodium Azide
Isotype	IgG
Purity	Immunogen affinity purified
Buffer	PBS with 1 mg/ml BSA

Product Description	
Description	Novus Biologicals Rabbit IP3R1 Antibody (NBP2-22458) is a polyclonal antibody validated for use in IHC, WB, Flow, ICC/IF, Simple Western and IP. Anti-IP3R1 Antibody: Cited in 2 publications. All Novus Biologicals antibodies are covered by our 100% guarantee.
Host	Rabbit
Gene ID	3708
Gene Symbol	ITPR1
Species	Mouse, Rat, Canine
Immunogen	Synthetic Peptide: N(1829) K K K D D E V D R D A P S R K K A K E(1848)

Product Application Details	
Applications	Western Blot, Simple Western, Flow Cytometry, Immunocytochemistry/ Immunofluorescence, Immunohistochemistry, Immunohistochemistry-Frozen, Immunoprecipitation
Recommended Dilutions	Western Blot 1:1000, Simple Western 1:25, Flow Cytometry 3 - 5 ug / 10 ⁶ cells, Immunohistochemistry 1:10 - 1:500, Immunocytochemistry/ Immunofluorescence 2 ug/ml, Immunoprecipitation 1:10 - 1:500, Immunohistochemistry-Frozen 1:250
Application Notes	WB: Detects an approx. 240 kDa protein representing IP3R-I from rat and mouse brain extract.

Images

Immunocytochemistry/Immunofluorescence: IP3R1 Antibody [NBP2-22458] - Immunolocalization of IP3 receptor type I in rat cerebellum.

Fig. 1

Publications

Hema Saranya Ilamathi, Sara Benhammouda, Laurent Chatel-Chaix, Marc Germain Protocol for measuring interorganelle contact sites in primary cells using a modified proximity ligation assay. STAR protocols 2024-03-20 [PMID: 38393951]

Ilamathi H, Benhammouda S, Lounas A et al. Contact sites between endoplasmic reticulum sheets and mitochondria regulate mitochondrial DNA replication and segregation iScience 2023-06-01 [PMID: 37534187] (ICC/IF, Human)





Novus Biologicals USA

10730 E. Briarwood Avenue
Centennial, CO 80112
USA
Phone: 303.730.1950
Toll Free: 1.888.506.6887
Fax: 303.730.1966
nb-customerservice@bio-techne.com

Bio-Techne Canada

21 Canmotor Ave
Toronto, ON M8Z 4E6
Canada
Phone: 905.827.6400
Toll Free: 855.668.8722
Fax: 905.827.6402
canada.inquires@bio-techne.com

Bio-Techne Ltd

19 Barton Lane
Abingdon Science Park
Abingdon, OX14 3NB, United Kingdom
Phone: (44) (0) 1235 529449
Free Phone: 0800 37 34 15
Fax: (44) (0) 1235 533420
info.EMEA@bio-techne.com

General Contact Information

www.novusbio.com
Technical Support: nb-technical@bio-techne.com
Orders: nb-customerservice@bio-techne.com
General: novus@novusbio.com

Products Related to NBP2-22458

NBP2-33376H	Blue Marker Antibody (6F4-F6) [HRP]
HAF008	Goat anti-Rabbit IgG Secondary Antibody [HRP]
NB7160	Goat anti-Rabbit IgG (H+L) Secondary Antibody [HRP]
NBP2-24891	Rabbit IgG Isotype Control

Limitations

This product is for research use only and is not approved for use in humans or in clinical diagnosis. Primary Antibodies are guaranteed for 1 year from date of receipt.

For more information on our 100% guarantee, please visit www.novusbio.com/guarantee

Earn gift cards/discounts by submitting a review: www.novusbio.com/reviews/submit/NBP2-22458

Earn gift cards/discounts by submitting a publication using this product:
www.novusbio.com/publications

