

Product Datasheet

alpha Tubulin 4a Antibody - BSA Free NBP2-21604

Unit Size: 0.1 ml

Aliquot and store at -20C or -80C. Avoid freeze-thaw cycles.

www.novusbio.com



technical@novusbio.com

Protocols, Publications, Related Products, Reviews, Research Tools and Images at:
www.novusbio.com/NBP2-21604

Updated 9/9/2025 v.20.1

Earn rewards for product
reviews and publications.

Submit a publication at www.novusbio.com/publications

Submit a review at www.novusbio.com/reviews/destination/NBP2-21604



NBP2-21604

alpha Tubulin 4a Antibody - BSA Free

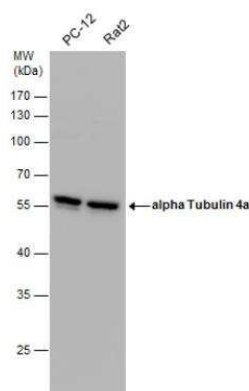
Product Information	
Unit Size	0.1 ml
Concentration	Concentrations vary lot to lot. See vial label for concentration. If unlisted please contact technical services.
Storage	Aliquot and store at -20C or -80C. Avoid freeze-thaw cycles.
Clonality	Polyclonal
Preservative	0.025% Proclin 300
Isotype	IgG
Purity	Antigen Affinity-purified
Buffer	PBS, 20% Glycerol
Target Molecular Weight	50 kDa

Product Description	
Description	Novus Biologicals Rabbit alpha Tubulin 4a Antibody - BSA Free (NBP2-21604) is a polyclonal antibody validated for use in IHC, WB and ICC/IF. All Novus Biologicals antibodies are covered by our 100% guarantee.
Host	Rabbit
Gene ID	7277
Gene Symbol	TUBA4A
Species	Human, Mouse, Rat, C. elegans, Chicken, Drosophila, Insect, Protozoa
Reactivity Notes	Mosquito (100%), Xenopus laevis (92%).
Immunogen	Recombinant protein encompassing a sequence within the center region of human alpha Tubulin 4a. The exact sequence is proprietary.

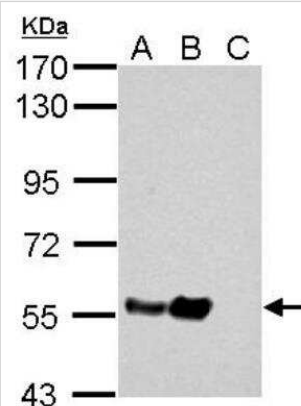
Product Application Details	
Applications	Western Blot, Immunohistochemistry-Paraffin, Immunocytochemistry/Immunofluorescence, Immunohistochemistry, Immunohistochemistry-Frozen
Recommended Dilutions	Western Blot 1:500-1:20000, Immunohistochemistry 1:100-1:1000, Immunocytochemistry/ Immunofluorescence 1:100-1:1000, Immunohistochemistry-Paraffin 1:100-1:1000, Immunohistochemistry-Frozen Assay dependent

Images

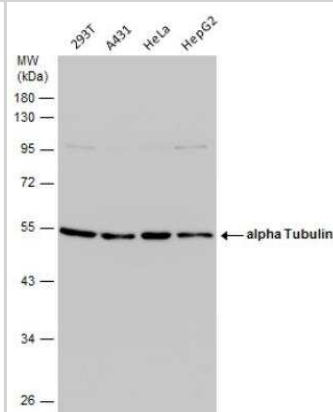
Western Blot: alpha Tubulin 4a Antibody [NBP2-21604] - Various whole cell extracts (30 ug) were separated by 10% SDS-PAGE, and the membrane was blotted with alpha Tubulin 4a antibody diluted by 1:20000. The HRP-conjugated anti-rabbit IgG antibody (NBP2-19301) was used to detect the primary antibody.



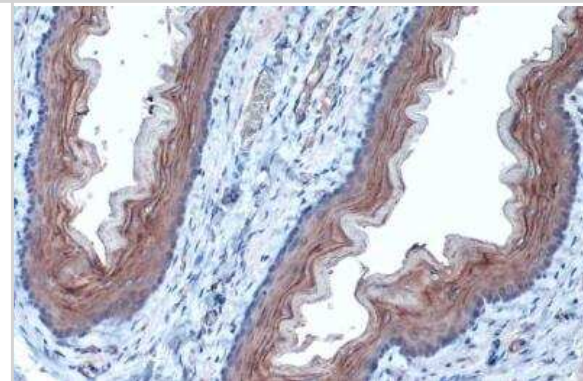
Western Blot: alpha Tubulin 4a Antibody [NBP2-21604] - Sample (30 ug of cell lysate) A: HeLa B: HeLa cytosol fraction C: HeLa nucleus fraction 10% SDS PAGE gel.



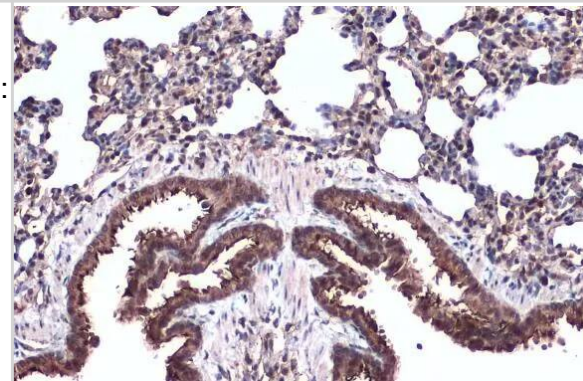
Western Blot: alpha Tubulin 4a Antibody [NBP2-21604] - Various whole cell extracts (30 ug) were separated by 10% SDS-PAGE, and the membrane was blotted with alpha Tubulin antibody diluted at 1:10000. The HRP-conjugated anti-rabbit IgG antibody (NBP2-19301) was used to detect the primary antibody.



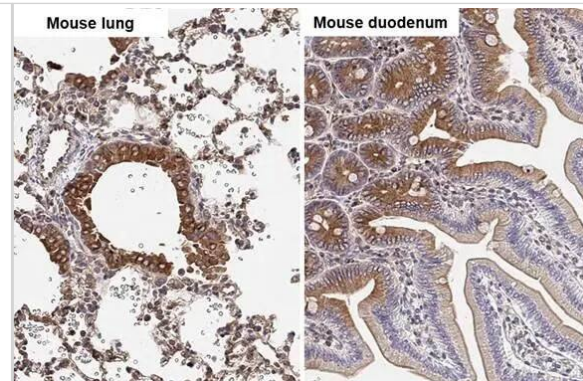
Immunohistochemistry-Paraffin: alpha Tubulin 4a Antibody [NBP2-21604] - Rat esophagus. alpha Tubulin 4a stained by alpha Tubulin 4a antibody diluted at 1:1000. Antigen Retrieval: Citrate buffer, pH 6.0, 15 min.



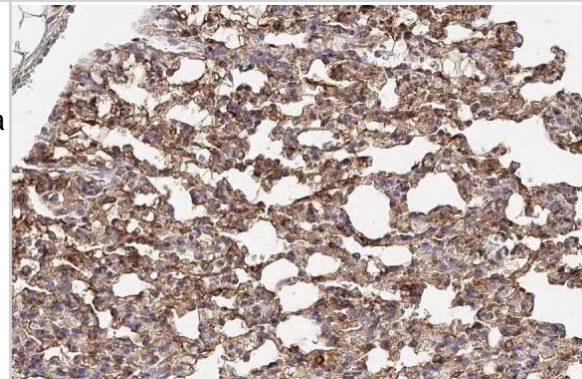
Immunohistochemistry-Paraffin: alpha Tubulin 4a Antibody [NBP2-21604] - alpha Tubulin 4a antibody detects alpha Tubulin 4a protein at cell membrane and cytoplasm by immunohistochemical analysis. Sample: Paraffin-embedded mouse lung. alpha Tubulin 4a stained by alpha Tubulin 4a antibody (NBP2-21604) diluted at 1:500. Antigen Retrieval: Citrate buffer, pH 6.0, 15 min



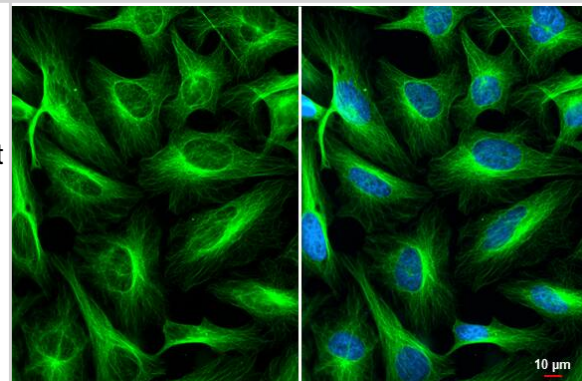
Immunohistochemistry-Paraffin: alpha Tubulin 4a Antibody [NBP2-21604] - alpha Tubulin 4a antibody detects alpha Tubulin 4a protein by immunohistochemical analysis. Sample: Paraffin-embedded mouse tissues. alpha Tubulin 4a stained by alpha Tubulin 4a antibody (NBP2-21604) diluted at 1:500. Antigen Retrieval: Citrate buffer, pH 6.0, 15 min



Immunohistochemistry-Paraffin: alpha Tubulin 4a Antibody [NBP2-21604] - alpha Tubulin 4a antibody detects alpha Tubulin 4a protein at cytoplasm and nucleus by immunohistochemical analysis. Sample: Paraffin-embedded rat lung. alpha Tubulin 4a stained by alpha Tubulin 4a antibody (NBP2-21604) diluted at 1:500. Antigen Retrieval: Citrate buffer, pH 6.0, 15 min



Immunocytochemistry/ Immunofluorescence: alpha Tubulin 4a Antibody [NBP2-21604] - alpha Tubulin 4a antibody detects alpha Tubulin 4a protein at cytoskeleton by immunofluorescent analysis. Sample: HeLa cells were fixed in 4% paraformaldehyde at RT for 15 min. Green: alpha Tubulin 4a stained by alpha Tubulin 4a antibody (NBP2-21604) diluted at 1:500. Blue: Fluoroshield with DAPI .

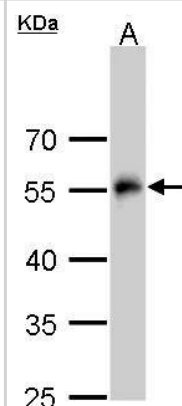


alpha Tubulin antibody detects alpha Tubulin protein by western blot analysis.

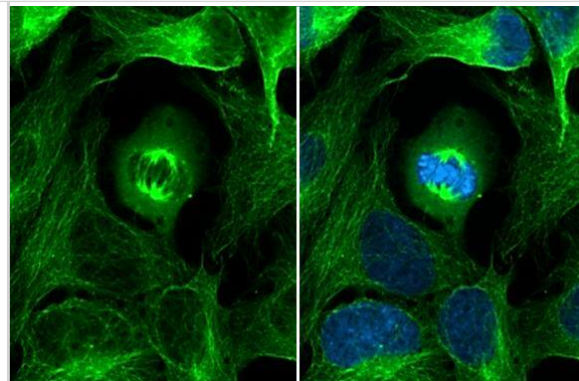
A. 30 ug Drosophila lysate/extract
10% SDS-PAGE

alpha Tubulin antibody (NBP2-21604) dilution: 1:2000

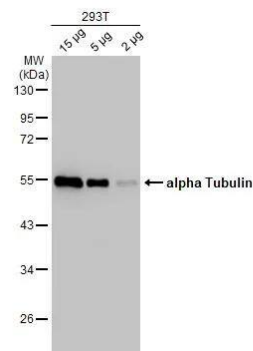
The HRP-conjugated anti-rabbit IgG antibody was used to detect the primary antibody.



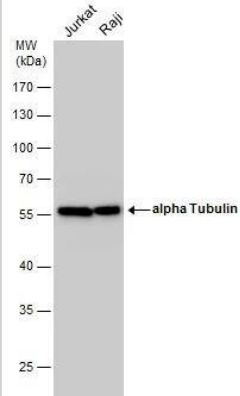
alpha Tubulin antibody detects alpha Tubulin protein at cytoskeleton by immunofluorescent analysis. Sample: HeLa cells were fixed in 4% paraformaldehyde at RT for 15 min. Green: alpha Tubulin stained by alpha Tubulin antibody (NBP2-21604) diluted at 1:500. Blue: Fluoroshield with DAPI .



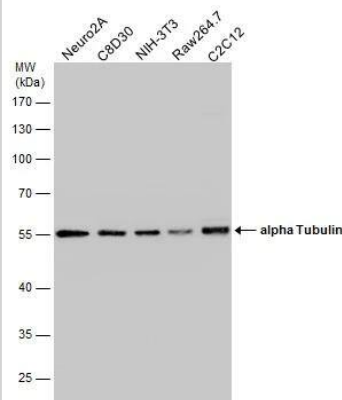
Various whole cell extracts were separated by 10% SDS-PAGE, and the membrane was blotted with alpha Tubulin antibody (NBP2-21604) diluted at 1:10000. The HRP-conjugated anti-rabbit IgG antibody was used to detect the primary antibody.



Various whole cell extracts (30 ug) were separated by 10% SDS-PAGE, and the membrane was blotted with alpha Tubulin antibody (NBP2-21604) diluted at 1:10000. The HRP-conjugated anti-rabbit IgG antibody was used to detect the primary antibody.



Various whole cell extracts (30 ug) were separated by 10% SDS-PAGE, and the membrane was blotted with alpha Tubulin antibody (NBP2-21604) diluted at 1:20000. The HRP-conjugated anti-rabbit IgG antibody was used to detect the primary antibody.





Novus Biologicals USA

10730 E. Briarwood Avenue
Centennial, CO 80112
USA
Phone: 303.730.1950
Toll Free: 1.888.506.6887
Fax: 303.730.1966
nb-customerservice@bio-techne.com

Bio-Techne Canada

21 Canmotor Ave
Toronto, ON M8Z 4E6
Canada
Phone: 905.827.6400
Toll Free: 855.668.8722
Fax: 905.827.6402
canada.inquires@bio-techne.com

Bio-Techne Ltd

19 Barton Lane
Abingdon Science Park
Abingdon, OX14 3NB, United Kingdom
Phone: (44) (0) 1235 529449
Free Phone: 0800 37 34 15
Fax: (44) (0) 1235 533420
info.EMEA@bio-techne.com

General Contact Information

www.novusbio.com
Technical Support: nb-technical@bio-techne.com
Orders: nb-customerservice@bio-techne.com
General: novus@novusbio.com

Products Related to NBP2-21604

NBP2-33376H	Blue Marker Antibody (6F4-F6) [HRP]
HAF008	Goat anti-Rabbit IgG Secondary Antibody [HRP]
NB7160	Goat anti-Rabbit IgG (H+L) Secondary Antibody [HRP]
NBP2-24891	Rabbit IgG Isotype Control

Limitations

This product is for research use only and is not approved for use in humans or in clinical diagnosis. Primary Antibodies are guaranteed for 1 year from date of receipt.

For more information on our 100% guarantee, please visit www.novusbio.com/guarantee

Earn gift cards/discounts by submitting a review: www.novusbio.com/reviews/submit/NBP2-21604

Earn gift cards/discounts by submitting a publication using this product:
www.novusbio.com/publications

