

# Product Datasheet

## GEF-H1 Antibody - BSA Free

### NBP2-21577

Unit Size: 0.1 ml

Aliquot and store at -20C or -80C. Avoid freeze-thaw cycles.

[www.novusbio.com](http://www.novusbio.com)



[technical@novusbio.com](mailto:technical@novusbio.com)

Protocols, Publications, Related Products, Reviews, Research Tools and Images at:  
[www.novusbio.com/NBP2-21577](http://www.novusbio.com/NBP2-21577)

Updated 10/30/2025 v.20.1

Earn rewards for product  
reviews and publications.

Submit a publication at [www.novusbio.com/publications](http://www.novusbio.com/publications)

Submit a review at [www.novusbio.com/reviews/destination/NBP2-21577](http://www.novusbio.com/reviews/destination/NBP2-21577)



**NBP2-21577**

GEF-H1 Antibody - BSA Free

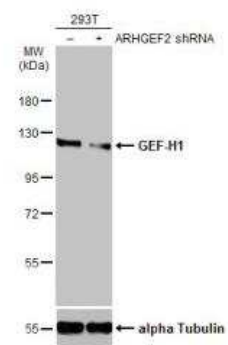
Product Information	
<b>Unit Size</b>	0.1 ml
<b>Concentration</b>	Concentrations vary lot to lot. See vial label for concentration. If unlisted please contact technical services.
<b>Storage</b>	Aliquot and store at -20C or -80C. Avoid freeze-thaw cycles.
<b>Clonality</b>	Polyclonal
<b>Preservative</b>	0.025% Proclin 300
<b>Isotype</b>	IgG
<b>Purity</b>	Antigen Affinity-purified
<b>Buffer</b>	PBS, 20% Glycerol
<b>Target Molecular Weight</b>	112 kDa

Product Description	
<b>Description</b>	Novus Biologicals Rabbit GEF-H1 Antibody - BSA Free (NBP2-21577) is a polyclonal antibody validated for use in IHC, WB, ICC/IF and IP. All Novus Biologicals antibodies are covered by our 100% guarantee.
<b>Host</b>	Rabbit
<b>Gene ID</b>	9181
<b>Gene Symbol</b>	ARHGEF2
<b>Species</b>	Human, Mouse, Rat
<b>Immunogen</b>	Recombinant protein encompassing a sequence within the C-terminus region of human GEF-H1. The exact sequence is proprietary.

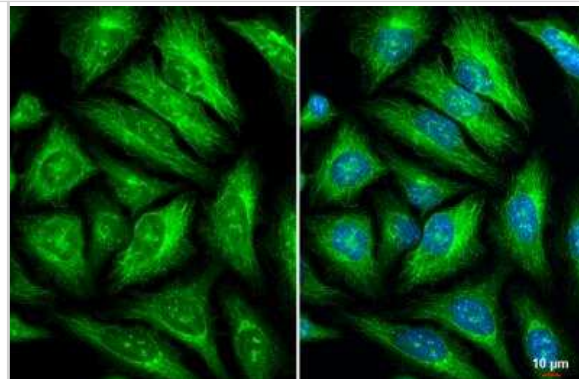
Product Application Details	
<b>Applications</b>	Western Blot, Immunohistochemistry-Paraffin, Immunocytochemistry/Immunofluorescence, Immunohistochemistry, Immunohistochemistry-Frozen, Immunoprecipitation, Knockdown Validated
<b>Recommended Dilutions</b>	Western Blot 1:500-1:3000, Immunohistochemistry 1:100-1:1000, Immunocytochemistry/ Immunofluorescence 1:100-1:1000, Immunoprecipitation 1:100-1:500, Immunohistochemistry-Paraffin 1:100-1:1000, Immunohistochemistry-Frozen 1:100-1:1000, Knockdown Validated

**Images**

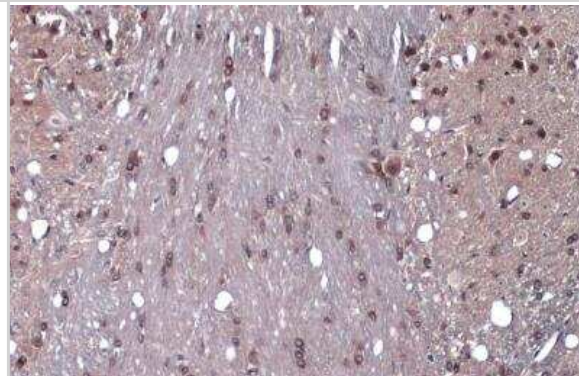
Western Blot: GEF-H1 Antibody [NBP2-21577] - Non-transfected (-) and transfected (+) 293T whole cell extracts (30 ug) were separated by 7.5% SDS-PAGE, and the membrane was blotted with GEF-H1 antibody diluted at 1:4000. HRP-conjugated anti-rabbit IgG antibody was used to detect the primary antibody.



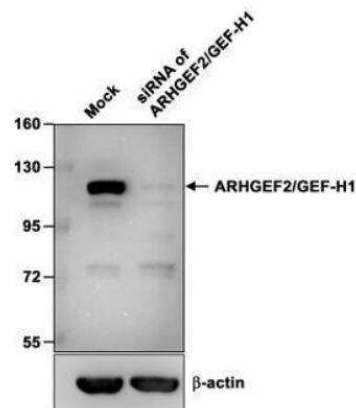
Immunocytochemistry/Immunofluorescence: GEF-H1 Antibody [NBP2-21577] - GEF-H1 antibody detects GEF-H1 protein at cytoskeleton and Golgi apparatus by immunofluorescent analysis. Sample: HeLa cells were fixed in ice-cold MeOH for 5 min. Green: GEF-H1 stained by GEF-H1 antibody diluted at 1:500. Blue: Hoechst 33342 staining. Scale bar= 10  $\mu$ m.



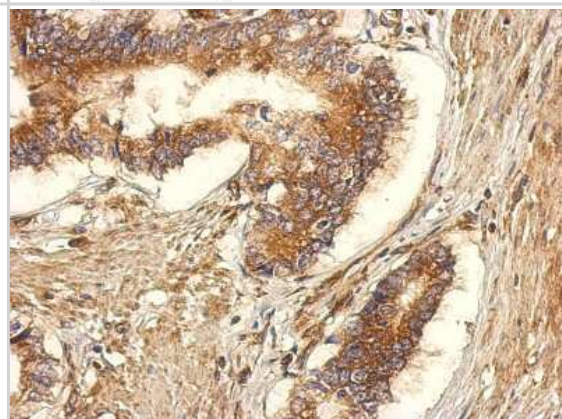
Immunohistochemistry-Paraffin: GEF-H1 Antibody [NBP2-21577] - GEF-H1 antibody detects GEF-H1 protein at cytoplasm by immunohistochemical analysis. Sample: Paraffin-embedded mouse brain. GEF-H1 stained by GEF-H1 antibody diluted at 1:1000. Antigen Retrieval: Citrate buffer, pH 6.0, 15 min.



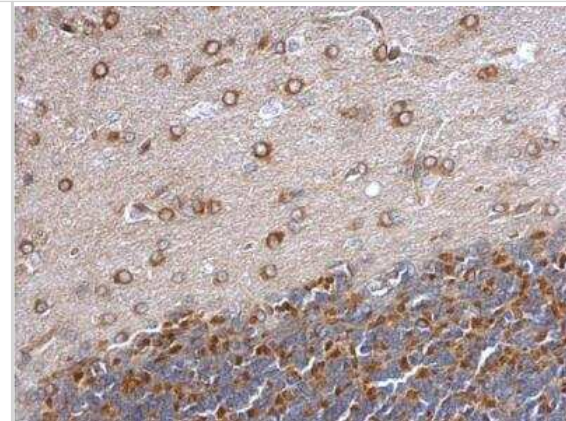
Western Blot: GEF-H1 Antibody [NBP2-21577] - Sample (10  $\mu$ g of whole cell lysate) A: hMSC-3A6 B: siRNA of ARHGEF2/GEF-H1 8% SDS PAGE diluted at 1:1000. The HRP-conjugated anti-rabbit IgG antibody (NBP2-19301) was used to detect the primary antibody.



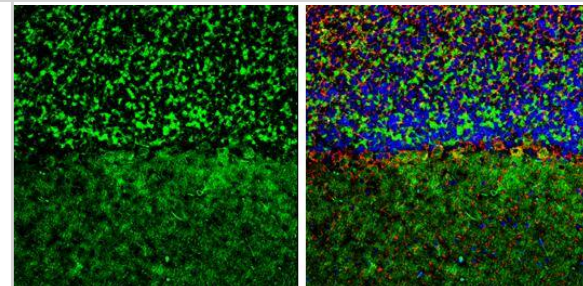
Immunohistochemistry-Paraffin: GEF-H1 Antibody [NBP2-21577] - Immunohistochemical analysis of paraffin-embedded Gastric ca, using antibody at 1:500 dilution.



Immunohistochemistry-Paraffin: GEF-H1 Antibody [NBP2-21577] - Paraffin-embedded rat hind brain. GEF-H1 antibody dilution: 1:500.



GEF-H1 antibody detects GEF-H1 protein by immunohistochemical analysis. Sample: Frozen-sectioned mouse cerebellum. Green: GEF-H1 stained by GEF-H1 antibody (NBP2-21577) diluted at 1:250. Red: NF-H, stained by NF-H antibody [GT114] diluted at 1:500. Blue: Fluoroshield with DAPI. Antigen Retrieval: Citrate buffer, pH 6.0, 10 min

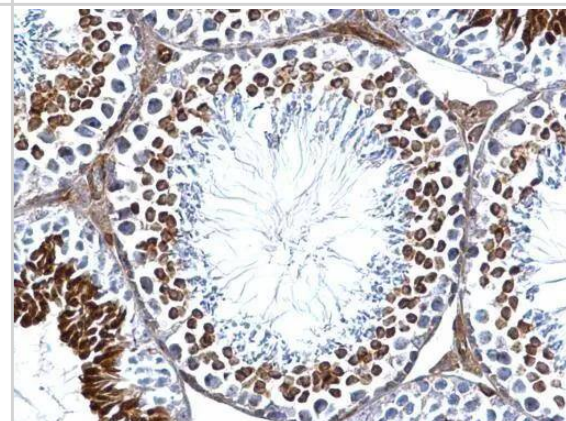


GEF-H1 antibody detects GEF-H1 protein at cytosol on mouse testis by immunohistochemical analysis.

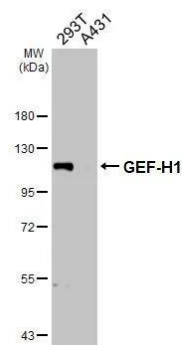
Sample: Paraffin-embedded mouse testis.

GEF-H1 antibody (NBP2-21577) dilution: 1:500.

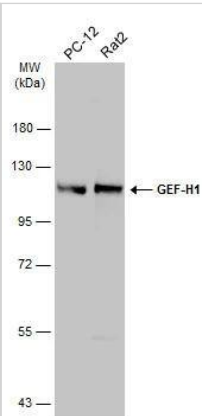
Antigen Retrieval: Trilogy(TM) (EDTA based, pH 8.0) buffer, 15min



Various whole cell extracts (30 ug) were separated by 7.5% SDS-PAGE, and the membrane was blotted with GEF-H1 antibody (NBP2-21577) diluted at 1:2000. The HRP-conjugated anti-rabbit IgG antibody was used to detect the primary antibody.



Various whole cell extracts (30 ug) were separated by 7.5% SDS-PAGE, and the membrane was blotted with GEF-H1 antibody (NBP2-21577) diluted at 1:500. The HRP-conjugated anti-rabbit IgG antibody was used to detect the primary antibody.



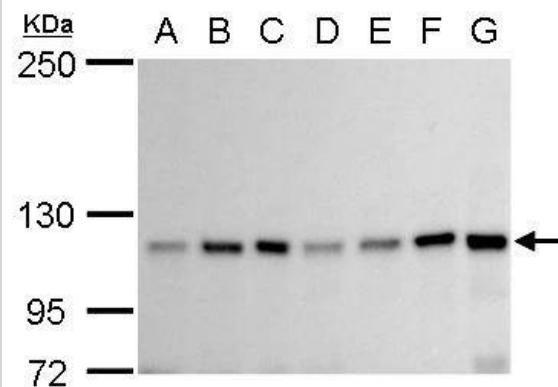
GEF-H1 antibody detects GEF-H1 protein by western blot analysis.

- A. 30 ug Neuro2A whole cell lysate/extract
- B. 30 ug GL261 whole cell lysate/extract
- C. 30 ug C8D30 whole cell lysate/extract
- D. 30 ug NIH-3T3 whole cell lysate/extract
- E. 30 ug BCL-1 whole cell lysate/extract
- F. 30 ug Raw 264.7 whole cell lysate/extract
- G. 30 ug C2C12 whole cell lysate/extract

5% SDS-PAGE

GEF-H1 antibody (NBP2-21577) dilution: 1:1000

The HRP-conjugated anti-rabbit IgG antibody was used to detect the primary antibody.





### **Novus Biologicals USA**

10730 E. Briarwood Avenue  
Centennial, CO 80112  
USA  
Phone: 303.730.1950  
Toll Free: 1.888.506.6887  
Fax: 303.730.1966  
nb-customerservice@bio-techne.com

### **Bio-Techne Canada**

21 Canmotor Ave  
Toronto, ON M8Z 4E6  
Canada  
Phone: 905.827.6400  
Toll Free: 855.668.8722  
Fax: 905.827.6402  
canada.inquires@bio-techne.com

### **Bio-Techne Ltd**

19 Barton Lane  
Abingdon Science Park  
Abingdon, OX14 3NB, United Kingdom  
Phone: (44) (0) 1235 529449  
Free Phone: 0800 37 34 15  
Fax: (44) (0) 1235 533420  
info.EMEA@bio-techne.com

### **General Contact Information**

www.novusbio.com  
Technical Support: nb-technical@bio-techne.com  
Orders: nb-customerservice@bio-techne.com  
General: novus@novusbio.com

### **Products Related to NBP2-21577**

---

NBP2-33376H	Blue Marker Antibody (6F4-F6) [HRP]
HAF008	Goat anti-Rabbit IgG Secondary Antibody [HRP]
NB7160	Goat anti-Rabbit IgG (H+L) Secondary Antibody [HRP]
NBP2-24891	Rabbit IgG Isotype Control

---

### **Limitations**

This product is for research use only and is not approved for use in humans or in clinical diagnosis. Primary Antibodies are guaranteed for 1 year from date of receipt.

For more information on our 100% guarantee, please visit [www.novusbio.com/guarantee](http://www.novusbio.com/guarantee)

Earn gift cards/discounts by submitting a review: [www.novusbio.com/reviews/submit/NBP2-21577](http://www.novusbio.com/reviews/submit/NBP2-21577)

Earn gift cards/discounts by submitting a publication using this product:  
[www.novusbio.com/publications](http://www.novusbio.com/publications)

