

# Product Datasheet

## Cytochrome c Antibody

### NBP2-21569

Unit Size: 0.1 ml

Aliquot and store at -20C or -80C. Avoid freeze-thaw cycles.

[www.novusbio.com](http://www.novusbio.com)



[technical@novusbio.com](mailto:technical@novusbio.com)

#### Publications: 4

Protocols, Publications, Related Products, Reviews, Research Tools and Images at:  
[www.novusbio.com/NBP2-21569](http://www.novusbio.com/NBP2-21569)

Updated 2/2/2026 v.20.1

Earn rewards for product  
reviews and publications.

Submit a publication at [www.novusbio.com/publications](http://www.novusbio.com/publications)

Submit a review at [www.novusbio.com/reviews/destination/NBP2-21569](http://www.novusbio.com/reviews/destination/NBP2-21569)



**NBP2-21569**

## Cytochrome c Antibody

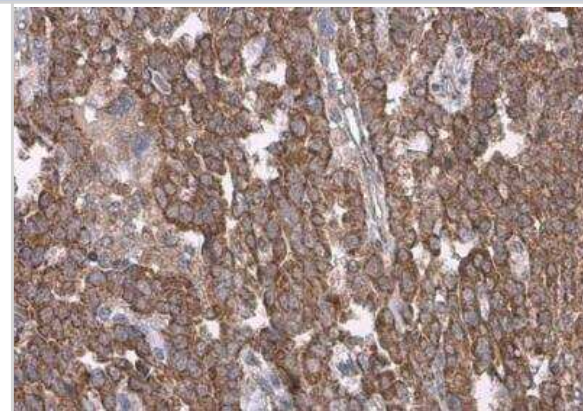
Product Information	
<b>Unit Size</b>	0.1 ml
<b>Concentration</b>	Concentrations vary lot to lot. See vial label for concentration. If unlisted please contact technical services.
<b>Storage</b>	Aliquot and store at -20C or -80C. Avoid freeze-thaw cycles.
<b>Clonality</b>	Polyclonal
<b>Preservative</b>	0.025% Proclin 300
<b>Isotype</b>	IgG
<b>Purity</b>	Antigen Affinity-purified
<b>Buffer</b>	PBS, 1% BSA, 20% Glycerol
<b>Target Molecular Weight</b>	12 kDa

Product Description	
<b>Description</b>	Novus Biologicals Rabbit Cytochrome c Antibody (NBP2-21569) is a polyclonal antibody validated for use in IHC, WB and Simple Western. Anti-Cytochrome c Antibody: Cited in 3 publications. All Novus Biologicals antibodies are covered by our 100% guarantee.
<b>Host</b>	Rabbit
<b>Gene ID</b>	54205
<b>Gene Symbol</b>	CYCS
<b>Species</b>	Human, Mouse, Rat, Canine, Drosophila
<b>Reactivity Notes</b>	Chicken (87%), Xenopus laevis (84%).
<b>Marker</b>	Mitochondria Marker
<b>Immunogen</b>	Full length human Cytochrome c Recombinant protein.

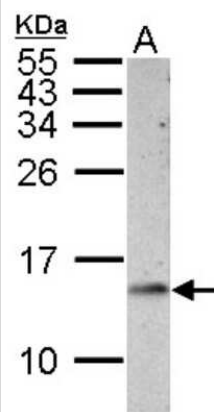
Product Application Details	
<b>Applications</b>	Western Blot, Simple Western, Immunohistochemistry-Paraffin, Immunohistochemistry, Immunohistochemistry-Frozen
<b>Recommended Dilutions</b>	Western Blot 1:500-1:3000, Simple Western, Immunohistochemistry 1:100-1:1000, Immunohistochemistry-Paraffin 1:100-1:1000, Immunohistochemistry-Frozen Assay dependent
<b>Application Notes</b>	See <a href="#">Simple Western Antibody Database</a> for Simple Western validation

**Images**

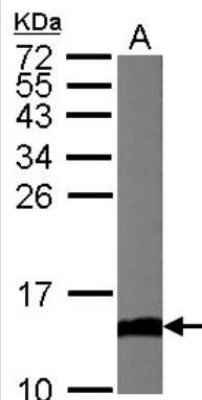
Immunohistochemistry-Paraffin: Cytochrome c Antibody [NBP2-21569] - Human endometrial carcinoma. Cytochrome C stained by Cytochrome C antibody diluted at 1:500. Antigen Retrieval: Citrate buffer, pH 6.0, 15 min.



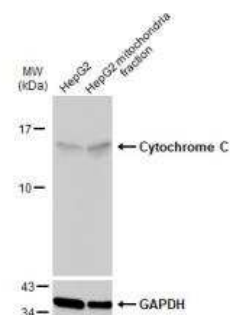
Western Blot: Cytochrome C Antibody [NBP2-21569] - Sample (30 ug of whole cell lysate) A: PC-12 15% SDS PAGE gel, diluted at 1:1000.



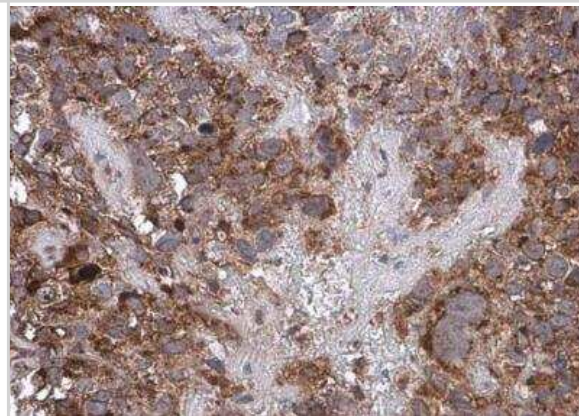
Western Blot: Cytochrome C Antibody [NBP2-21569] - Sample (50 ug of whole cell lysate) A: Mouse Brain, 15% SDS PAGE gel, diluted at 1:1000.



Western Blot: Cytochrome c Antibody [NBP2-21569] - HepG2 and mitochondria extracts (30 ug) were separated by SDS-PAGE, and the membrane was blotted with Cytochrome C antibody diluted at 1:2000. HRP-conjugated anti-rabbit IgG antibody was used to detect the primary antibody, and the signal was developed with Trident pico Western HRP Substrate.

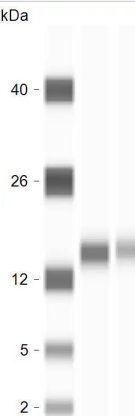


Immunohistochemistry-Paraffin: Cytochrome c Antibody [NBP2-21569] - Human cervical carcinoma. Cytochrome C stained by Cytochrome C antibody diluted at 1:500. Antigen Retrieval: Citrate buffer, pH 6.0, 15 min.

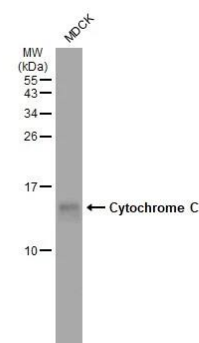


Simple Western: Cytochrome c Antibody [NBP2-21569] - Cytochrome C Antibodies (NBP2-21569), ProteinSimple Western Blot on Jess Instrument; 1 microgram of human brain tissue lysate was tested with the antibodies diluted 10 and 20 times. Image from verified customer review.

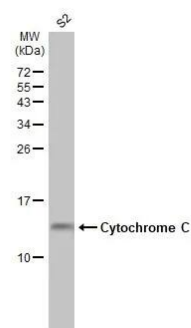
kDa



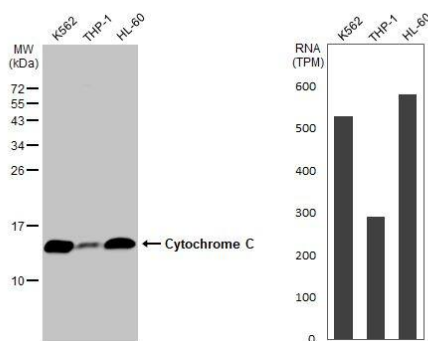
Western Blot: Cytochrome c Antibody [NBP2-21569] - Whole cell extract (30 ug) was separated by 15% SDS-PAGE, and the membrane was blotted with Cytochrome c antibody (NBP2-21569) diluted at 1:1000. The HRP-conjugated anti-rabbit IgG antibody was used to detect the primary antibody.



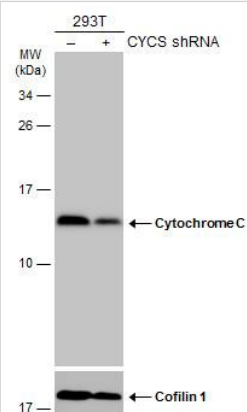
Western Blot: Cytochrome c Antibody [NBP2-21569] - Whole cell extract (30 ug) was separated by 15% SDS-PAGE, and the membrane was blotted with Cytochrome c antibody (NBP2-21569) diluted at 1:1000. The HRP-conjugated anti-rabbit IgG antibody was used to detect the primary antibody, and the signal was developed with Trident ECL plus-Enhanced.



Western Blot: Cytochrome c Antibody [NBP2-21569] - Various whole cell extracts (30 ug) were separated by 15% SDS-PAGE, and the membrane was blotted with Cytochrome C antibody diluted at 1:1000. The HRP-conjugated anti-rabbit IgG antibody was used to detect the primary antibody, and the signal was developed with Trident ECL plus-Enhanced. Corresponding RNA expression data for the same cell lines are based on Human Protein Atlas program.



Non-transfected (-) and transfected (+) 293T whole cell extracts (30 ug) were separated by 15% SDS-PAGE, and the membrane was blotted with Cytochrome C antibody (NBP2-21569) diluted at 1:1000. The HRP-conjugated anti-rabbit IgG antibody was used to detect the primary antibody.



## Publications

Li J, Jaiswal MK, Chien JF et al. Divergent single cell transcriptome and epigenome alterations in ALS and FTD patients with C9orf72 mutation Nat Commun 2023-09-15 [PMID: 37714849] (Immunohistochemistry, Human)

Fonseca TL, Russo SC, Luongo C, Salvatore D et Al. Inactivation of Type 3 Deiodinase Results in Life-long Changes in the Brown Adipose Tissue Transcriptome in the Male Mouse Endocrinology 2022-03-03 [PMID: 35238380]

Schreiter T, Sowa JP, Schlattjan M et al. Human Ex-Vivo Liver Model for Acetaminophen-induced Liver Damage. Sci Rep. 2016-08-23 [PMID: 27550092] (IF/IHC, Human)

Wu SH, Chyau CC, Chen JH et al. Anti-cancerous effects of Wasabia japonica extract in Hep3B liver cancer cells via ROS accumulation, DNA damage and p73-mediated apoptosis Journal of Functional Foods 2015-03-02 (WB, Human)



### **Novus Biologicals USA**

10730 E. Briarwood Avenue  
Centennial, CO 80112  
USA  
Phone: 303.730.1950  
Toll Free: 1.888.506.6887  
Fax: 303.730.1966  
nb-customerservice@bio-techne.com

### **Bio-Techne Canada**

21 Canmotor Ave  
Toronto, ON M8Z 4E6  
Canada  
Phone: 905.827.6400  
Toll Free: 855.668.8722  
Fax: 905.827.6402  
canada.inquires@bio-techne.com

### **Bio-Techne Ltd**

19 Barton Lane  
Abingdon Science Park  
Abingdon, OX14 3NB, United Kingdom  
Phone: (44) (0) 1235 529449  
Free Phone: 0800 37 34 15  
Fax: (44) (0) 1235 533420  
info.EMEA@bio-techne.com

### **General Contact Information**

www.novusbio.com  
Technical Support: nb-technical@bio-techne.com  
Orders: nb-customerservice@bio-techne.com  
General: novus@novusbio.com

### **Products Related to NBP2-21569**

---

NBP2-33376H	Blue Marker Antibody (6F4-F6) [HRP]
HAF008	Goat anti-Rabbit IgG Secondary Antibody [HRP]
NB7160	Goat anti-Rabbit IgG (H+L) Secondary Antibody [HRP]
NBP2-24891	Rabbit IgG Isotype Control

---

### **Limitations**

This product is for research use only and is not approved for use in humans or in clinical diagnosis. Primary Antibodies are guaranteed for 1 year from date of receipt.

For more information on our 100% guarantee, please visit [www.novusbio.com/guarantee](http://www.novusbio.com/guarantee)

Earn gift cards/discounts by submitting a review: [www.novusbio.com/reviews/submit/NBP2-21569](http://www.novusbio.com/reviews/submit/NBP2-21569)

Earn gift cards/discounts by submitting a publication using this product:  
[www.novusbio.com/publications](http://www.novusbio.com/publications)

