

Product Datasheet

ZEB1 Antibody NBP2-20942

Unit Size: 0.1 ml

Aliquot and store at -20C or -80C. Avoid freeze-thaw cycles.

www.novusbio.com



technical@novusbio.com

Publications: 1

Protocols, Publications, Related Products, Reviews, Research Tools and Images at:
www.novusbio.com/NBP2-20942

Updated 3/4/2026 v.20.1

Earn rewards for product
reviews and publications.

Submit a publication at www.novusbio.com/publications

Submit a review at www.novusbio.com/reviews/destination/NBP2-20942



NBP2-20942

ZEB1 Antibody

Product Information	
Unit Size	0.1 ml
Concentration	Concentrations vary lot to lot. See vial label for concentration. If unlisted please contact technical services.
Storage	Aliquot and store at -20C or -80C. Avoid freeze-thaw cycles.
Clonality	Polyclonal
Preservative	0.025% Proclin 300
Isotype	IgG
Purity	Antigen Affinity-purified
Buffer	PBS, 1% BSA, 20% Glycerol
Target Molecular Weight	124 kDa

Product Description	
Host	Rabbit
Gene ID	6935
Gene Symbol	ZEB1
Species	Human, Mouse, Rat
Reactivity Notes	Chicken (89%).
Marker	Mesenchymal Cells Marker
Immunogen	Recombinant protein encompassing a sequence within the center region of human ZEB1. The exact sequence is proprietary.

Product Application Details	
Applications	Western Blot, Immunocytochemistry/ Immunofluorescence, Immunoprecipitation, Chromatin Immunoprecipitation (ChIP), Knockdown Validated
Recommended Dilutions	Western Blot 1:500-1:3000, Immunocytochemistry/ Immunofluorescence 1:100-1:1000, Immunoprecipitation 1:100-1:500, Chromatin Immunoprecipitation (ChIP) Assay dependent, Knockdown Validated

Images

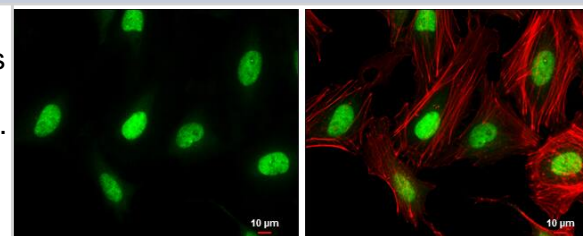
Immunocytochemistry/ Immunofluorescence: ZEB1 Antibody [NBP2-20942] - ZEB1 antibody [N2C1], Internal detects ZEB1 protein at nucleus by immunofluorescent analysis.

Sample: HeLa cells were fixed in 4% paraformaldehyde at RT for 15 min.

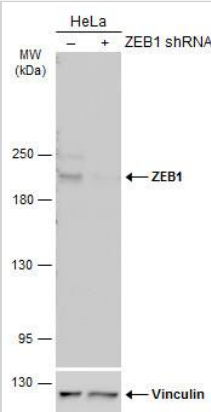
Green: ZEB1 protein stained by ZEB1 antibody [N2C1], Internal (NBP2-20942) diluted at 1:500.

Red: Phalloidin, a cytoskeleton marker, diluted at 1:100.

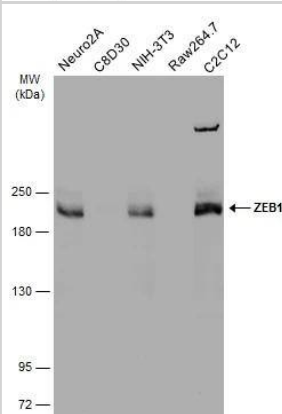
Scale bar = 10 um.



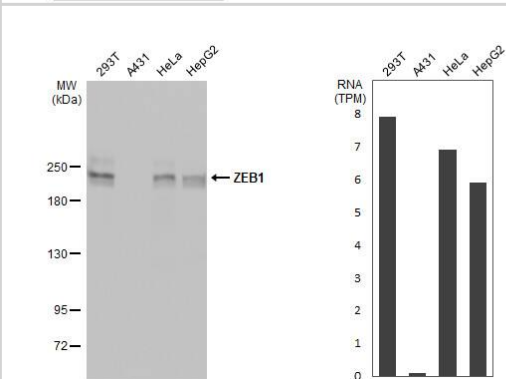
Non-transfected (-) and transfected (+) HeLa whole cell extracts (30 ug) were separated by 5% SDS-PAGE, and the membrane was blotted with ZEB1 antibody [N2C1], Internal (NBP2-20942) diluted at 1:500. The HRP-conjugated anti-rabbit IgG antibody was used to detect the primary antibody, and the signal was developed with Trident ECL plus-Enhanced.



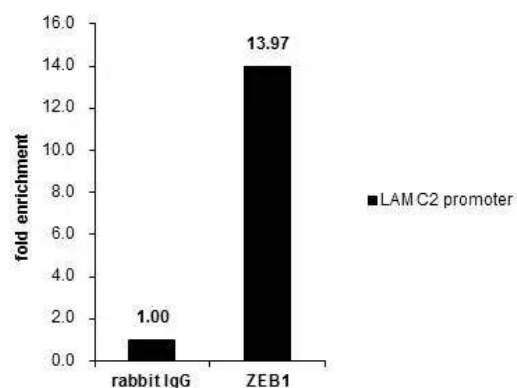
Various whole cell extracts (30 ug) were separated by 5% SDS-PAGE, and the membrane was blotted with ZEB1 antibody (NBP2-20942) diluted at 1:1000. The HRP-conjugated anti-rabbit IgG antibody was used to detect the primary antibody.



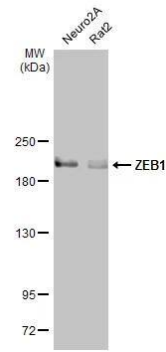
Various whole cell extracts (30 ug) were separated by 5% SDS-PAGE, and the membrane was blotted with ZEB1 antibody [N2C1], Internal (NBP2-20942) diluted at 1:1000. The HRP-conjugated anti-rabbit IgG antibody was used to detect the primary antibody. Corresponding RNA expression data for the same cell lines are based on Human Protein Atlas program.



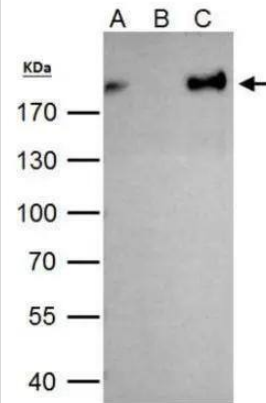
Cross-linked ChIP was performed with HeLa chromatin extract and 5 ug of either control rabbit IgG or anti-ZEB1 antibody. The precipitated DNA was detected by PCR with primer set targeting to LAMC2 promoter.



Various whole cell extracts (30 ug) were separated by 5% SDS-PAGE, and the membrane was blotted with ZEB1 antibody [N2C1], Internal (NBP2-20942) diluted at 1:1000. The HRP-conjugated anti-rabbit IgG antibody was used to detect the primary antibody.



ZEB1 antibody immunoprecipitates ZEB1 protein in IP experiments. IP Sample: 293T whole cell lysate/extract A. 40 ug 293T whole cell lysate/extract B. Control with 2 ug of preimmune rabbit IgG C. Immunoprecipitation of ZEB1 protein by 2 ug of ZEB1 antibody (NBP2-20942) 7.5% SDS-PAGE The immunoprecipitated ZEB1 protein was detected by ZEB1 antibody (NBP2-20942) diluted at 1:1000. EasyBlot anti-rabbit IgG was used as a secondary reagent.



Publications

Deleuze V, Garcia L, Rouaisnel B et al. Efficient genome editing in erythroid cells unveils novel MYB target genes and regulatory functions *iScience* 2023-09-15 [PMID: 37670779]



Novus Biologicals USA

10730 E. Briarwood Avenue
Centennial, CO 80112
USA
Phone: 303.730.1950
Toll Free: 1.888.506.6887
Fax: 303.730.1966
nb-customerservice@bio-techne.com

Bio-Techne Canada

21 Canmotor Ave
Toronto, ON M8Z 4E6
Canada
Phone: 905.827.6400
Toll Free: 855.668.8722
Fax: 905.827.6402
canada.inquires@bio-techne.com

Bio-Techne Ltd

19 Barton Lane
Abingdon Science Park
Abingdon, OX14 3NB, United Kingdom
Phone: (44) (0) 1235 529449
Free Phone: 0800 37 34 15
Fax: (44) (0) 1235 533420
info.EMEA@bio-techne.com

General Contact Information

www.novusbio.com
Technical Support: nb-technical@bio-techne.com
Orders: nb-customerservice@bio-techne.com
General: novus@novusbio.com

Products Related to NBP2-20942

HAF008	Goat anti-Rabbit IgG Secondary Antibody [HRP]
NB7160	Goat anti-Rabbit IgG (H+L) Secondary Antibody [HRP]
NBP2-24891	Rabbit IgG Isotype Control
NBP2-13159PEP	ZEB1 Antibody Blocking Peptide

Limitations

This product is for research use only and is not approved for use in humans or in clinical diagnosis. Primary Antibodies are guaranteed for 1 year from date of receipt.

For more information on our 100% guarantee, please visit www.novusbio.com/guarantee

Earn gift cards/discounts by submitting a review: www.novusbio.com/reviews/submit/NBP2-20942

Earn gift cards/discounts by submitting a publication using this product:
www.novusbio.com/publications

