

# Product Datasheet

## SMARCC1 Antibody - BSA Free NBP2-20415

Unit Size: 0.1 ml

Aliquot and store at -20C or -80C. Avoid freeze-thaw cycles.

[www.novusbio.com](http://www.novusbio.com)



[technical@novusbio.com](mailto:technical@novusbio.com)

### Publications: 1

Protocols, Publications, Related Products, Reviews, Research Tools and Images at:  
[www.novusbio.com/NBP2-20415](http://www.novusbio.com/NBP2-20415)

Updated 9/25/2025 v.20.1

Earn rewards for product  
reviews and publications.

Submit a publication at [www.novusbio.com/publications](http://www.novusbio.com/publications)

Submit a review at [www.novusbio.com/reviews/destination/NBP2-20415](http://www.novusbio.com/reviews/destination/NBP2-20415)



**NBP2-20415**

SMARCC1 Antibody - BSA Free

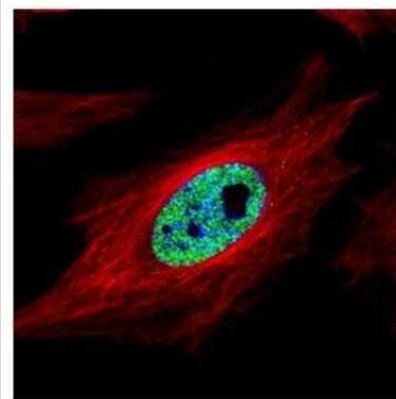
Product Information	
<b>Unit Size</b>	0.1 ml
<b>Concentration</b>	Concentrations vary lot to lot. See vial label for concentration. If unlisted please contact technical services.
<b>Storage</b>	Aliquot and store at -20C or -80C. Avoid freeze-thaw cycles.
<b>Clonality</b>	Polyclonal
<b>Preservative</b>	0.025% Proclin 300
<b>Isotype</b>	IgG
<b>Purity</b>	Antigen Affinity-purified
<b>Buffer</b>	PBS, 20% Glycerol
<b>Target Molecular Weight</b>	123 kDa

Product Description	
<b>Description</b>	Novus Biologicals Rabbit SMARCC1 Antibody - BSA Free (NBP2-20415) is a polyclonal antibody validated for use in IHC, WB, ICC/IF, IP and ChIP. Anti-SMARCC1 Antibody: Cited in 1 publication. All Novus Biologicals antibodies are covered by our 100% guarantee.
<b>Host</b>	Rabbit
<b>Gene ID</b>	6599
<b>Gene Symbol</b>	SMARCC1
<b>Species</b>	Human, Mouse, Rat
<b>Immunogen</b>	Recombinant protein encompassing a sequence within the C-terminus region of human SMARCC1. The exact sequence is proprietary.

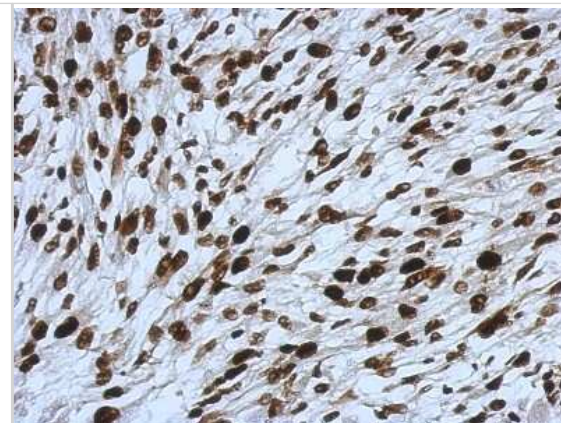
Product Application Details	
<b>Applications</b>	Western Blot, Immunohistochemistry-Paraffin, Immunocytochemistry/Immunofluorescence, Immunohistochemistry, Immunoprecipitation, Chromatin Immunoprecipitation (ChIP)
<b>Recommended Dilutions</b>	Western Blot 1:500-1:20000, Immunohistochemistry 1:100-1:1000, Immunocytochemistry/ Immunofluorescence 1:100-1:1000, Immunoprecipitation 1:100-1:500, Immunohistochemistry-Paraffin 1:100-1:1000, Chromatin Immunoprecipitation (ChIP)
<b>Application Notes</b>	ChIP assay Assay-dependent dilution

**Images**

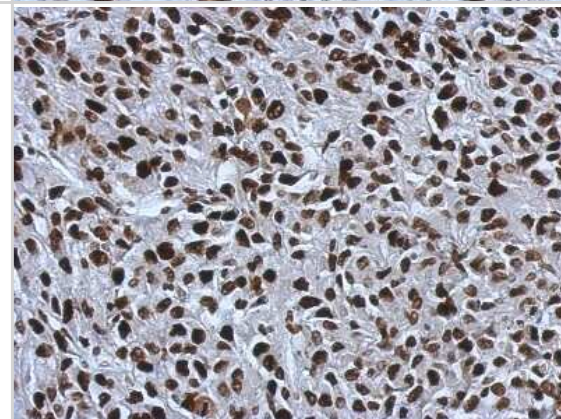
Immunocytochemistry/Immunofluorescence: SMARCC1 Antibody [NBP2-20415] - Confocal immunofluorescence analysis of paraformaldehyde-fixed HeLa, using SMARCC1 antibody (Green) at 1:500 dilution. Alpha-tubulin filaments are labeled with Alpha-tubulin antibody (Red) at 1:2000.



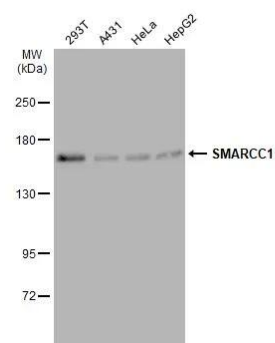
Immunohistochemistry-Paraffin: SMARCC1 Antibody [NBP2-20415] - Immunohistochemical analysis of paraffin-embedded C2C12 xenograft, using antibody at 1:500 dilution.



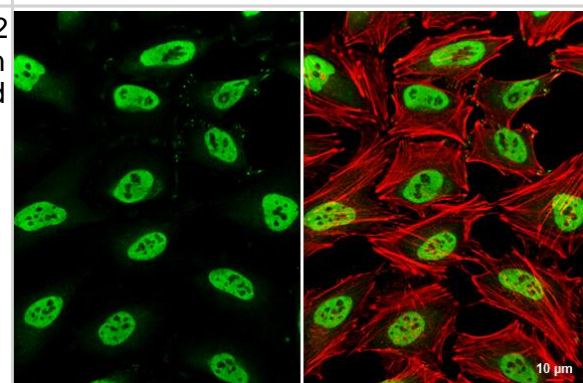
Immunohistochemistry-Paraffin: SMARCC1 Antibody [NBP2-20415] - Immunohistochemical analysis of paraffin-embedded RT2 xenograft, using antibody at 1:500 dilution.



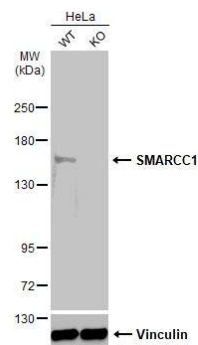
Western Blot: SMARCC1 Antibody [NBP2-20415] - Various whole cell extracts (30 ug) were separated by 5% SDS-PAGE, and the membrane was blotted with SMARCC1 antibody [C2C3], C-term (NBP2-20415) diluted at 1:2000. The HRP-conjugated anti-rabbit IgG antibody was used to detect the primary antibody.



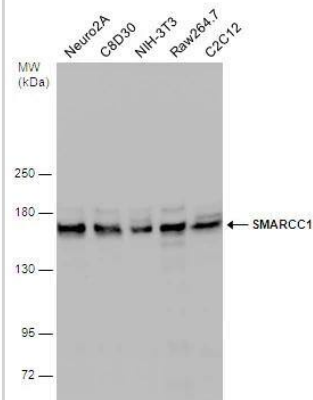
Immunocytochemistry/ Immunofluorescence: SMARCC1 Antibody [NBP2-20415] - SMARCC1 antibody [C2C3], C-term detects SMARCC1 protein at nucleus by immunofluorescent analysis. Sample: HeLa cells were fixed in 4% paraformaldehyde at RT for 15 min. Green: SMARCC1 stained by SMARCC1 antibody [C2C3], C-term (NBP2-20415) diluted at 1:500. Red: phalloidin, a cytoskeleton marker, diluted at 1:200. Scale bar= 10 um.



Western Blot: SMARCC1 Antibody [NBP2-20415] - Wild-type (WT) and SMARCC1 knockout (KO) HeLa cell extracts (30 ug) were separated by 5% SDS-PAGE, and the membrane was blotted with SMARCC1 antibody [C2C3], C-term diluted at 1:4000. The HRP-conjugated anti-rabbit IgG antibody was used to detect the primary antibody.



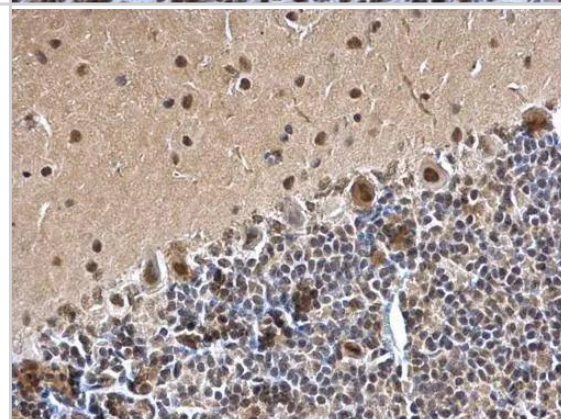
Various whole cell extracts (30 ug) were separated by 5% SDS-PAGE, and the membrane was blotted with SMARCC1 antibody [C2C3], C-term (NBP2-20415) diluted at 1:1000. The HRP-conjugated anti-rabbit IgG antibody was used to detect the primary antibody.



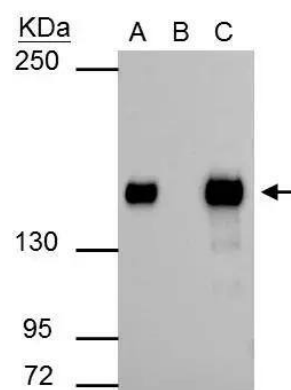
Immunohistochemical analysis of paraffin-embedded BT483 xenograft, using SMARCC1(NBP2-20415) antibody at 1:500 dilution. br>Antigen Retrieval: Trilogy(TM) (EDTA based, pH 8.0) buffer, 15min



SMARCC1 antibody [C2C3], C-term detects SMARCC1 protein at nucleus on rat hind brain by immunohistochemical analysis.  
Sample: Paraffin-embedded rat hind brain.  
SMARCC1 antibody [C2C3], C-term (NBP2-20415) dilution: 1:500.  
br>Antigen Retrieval: Trilogy(TM) (EDTA based, pH 8.0) buffer, 15min

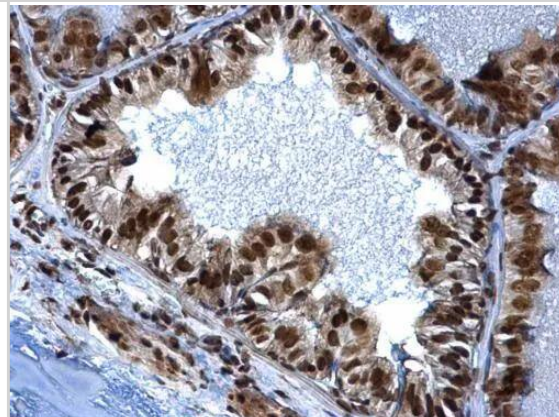


SMARCC1 antibody immunoprecipitates SMARCC1 protein in IP experiments. IP Sample: 293T whole cell lysate/extract A : 30 ug whole cell lysate/extract of SMARCC1 protein expressing 293T cells B : Control with 2.5 ug of pre-immune rabbit IgG C : Immunoprecipitation of SMARCC1 by 2.5 ug of SMARCC1 antibody (NBP2-20415) 5% SDS-PAGE The immunoprecipitated SMARCC1 protein was detected by SMARCC1 antibody (NBP2-20415) diluted at 1 : 1000. EasyBlot anti-rabbit IgG (HRP) was used as a secondary reagent.

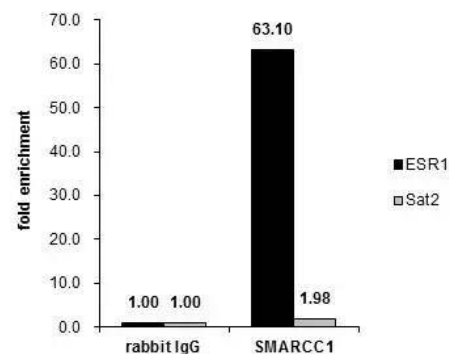


SMARCC1 antibody [C2C3], C-term detects SMARCC1 protein at nucleus on mouse prostate by immunohistochemical analysis. Sample: Paraffin-embedded mouse prostate. SMARCC1 antibody [C2C3], C-term (NBP2-20415) dilution: 1:500.

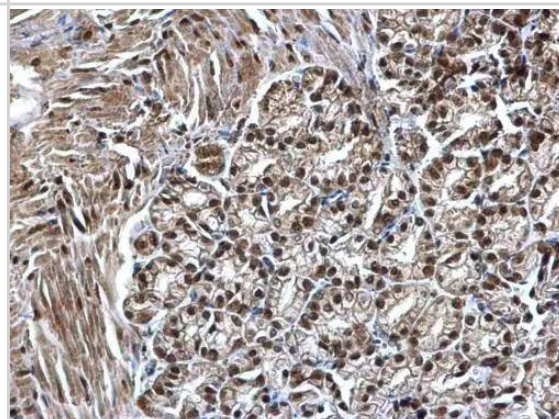
Antigen Retrieval: Trilogy(TM) (EDTA based, pH 8.0) buffer, 15min



Cross-linked ChIP was performed with MF-7 chromatin extract treated with B-estradiol (10 nM for 45 min) and 5 ug of either control rabbit IgG or anti-SMARCC1 antibody. The precipitated DNA was detected by PCR with primer set targeting to ESR1 or Sat2.



SMARCC1 antibody [C2C3], C-term detects SMARCC1 protein at nucleus on mouse duodenum by immunohistochemical analysis. Sample: Paraffin-embedded mouse duodenum. SMARCC1 antibody [C2C3], C-term (NBP2-20415) dilution: 1:500. br>Antigen Retrieval: Trilogy(TM) (EDTA based, pH 8.0) buffer, 15min



## Publications

Sauls k, Greco TM, Wang L et al. Initiating Events in Direct Cardiomyocyte Reprogramming. Cell Rep. 2018-02-13 [PMID: 29444441] (WB, Mouse)



### **Novus Biologicals USA**

10730 E. Briarwood Avenue  
Centennial, CO 80112  
USA  
Phone: 303.730.1950  
Toll Free: 1.888.506.6887  
Fax: 303.730.1966  
nb-customerservice@bio-techne.com

### **Bio-Techne Canada**

21 Canmotor Ave  
Toronto, ON M8Z 4E6  
Canada  
Phone: 905.827.6400  
Toll Free: 855.668.8722  
Fax: 905.827.6402  
canada.inquires@bio-techne.com

### **Bio-Techne Ltd**

19 Barton Lane  
Abingdon Science Park  
Abingdon, OX14 3NB, United Kingdom  
Phone: (44) (0) 1235 529449  
Free Phone: 0800 37 34 15  
Fax: (44) (0) 1235 533420  
info.EMEA@bio-techne.com

### **General Contact Information**

www.novusbio.com  
Technical Support: nb-technical@bio-techne.com  
Orders: nb-customerservice@bio-techne.com  
General: novus@novusbio.com

### **Products Related to NBP2-20415**

---

NBP2-33376H	Blue Marker Antibody (6F4-F6) [HRP]
HAF008	Goat anti-Rabbit IgG Secondary Antibody [HRP]
NB7160	Goat anti-Rabbit IgG (H+L) Secondary Antibody [HRP]
NBP2-24891	Rabbit IgG Isotype Control

---

### **Limitations**

This product is for research use only and is not approved for use in humans or in clinical diagnosis. Primary Antibodies are guaranteed for 1 year from date of receipt.

For more information on our 100% guarantee, please visit [www.novusbio.com/guarantee](http://www.novusbio.com/guarantee)

Earn gift cards/discounts by submitting a review: [www.novusbio.com/reviews/submit/NBP2-20415](http://www.novusbio.com/reviews/submit/NBP2-20415)

Earn gift cards/discounts by submitting a publication using this product:  
[www.novusbio.com/publications](http://www.novusbio.com/publications)

