

Product Datasheet

Smad5 Antibody NBP2-20413

Unit Size: 0.1 ml

Aliquot and store at -20C or -80C. Avoid freeze-thaw cycles.

www.novusbio.com



technical@novusbio.com

Protocols, Publications, Related Products, Reviews, Research Tools and Images at:
www.novusbio.com/NBP2-20413

Updated 9/25/2025 v.20.1

Earn rewards for product
reviews and publications.

Submit a publication at www.novusbio.com/publications

Submit a review at www.novusbio.com/reviews/destination/NBP2-20413



NBP2-20413

Smad5 Antibody

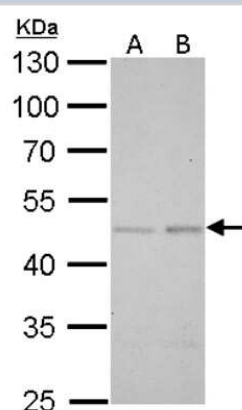
Product Information	
Unit Size	0.1 ml
Concentration	Concentrations vary lot to lot. See vial label for concentration. If unlisted please contact technical services.
Storage	Aliquot and store at -20C or -80C. Avoid freeze-thaw cycles.
Clonality	Polyclonal
Preservative	0.01% Thimerosal
Isotype	IgG
Purity	Antigen Affinity-purified
Buffer	PBS, 1% BSA, 20% Glycerol
Target Molecular Weight	52 kDa

Product Description	
Description	Novus Biologicals Rabbit Smad5 Antibody (NBP2-20413) is a polyclonal antibody validated for use in WB and ICC/IF. All Novus Biologicals antibodies are covered by our 100% guarantee.
Host	Rabbit
Gene ID	4090
Gene Symbol	SMAD5
Species	Human, Mouse, Rat
Immunogen	Recombinant protein encompassing a sequence within the center region of human Smad5. The exact sequence is proprietary.

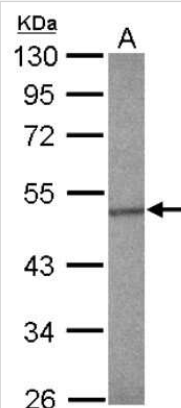
Product Application Details	
Applications	Western Blot, Immunocytochemistry/ Immunofluorescence
Recommended Dilutions	Western Blot 1:500-1:3000, Immunocytochemistry/ Immunofluorescence 1:10-1:500

Images

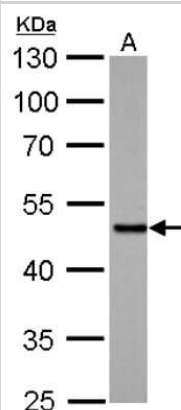
Western Blot: SMAD5 Antibody [NBP2-20413] - SMAD5 antibody detects SMAD5 protein by Western blot analysis. A. 30 ug Raw264. 7 whole cell lysate/extract B. 30 ug C2C12 whole cell lysate/extract 10 % SDS-PAGE SMAD5 antibody dilution: 1:1000.



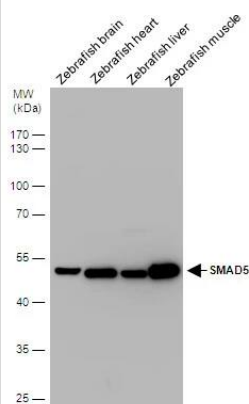
Western Blot: SMAD5 Antibody [NBP2-20413] - Sample (30 ug of whole cell lysate) A: HeLa 10% SDS PAGE gel, diluted at 1:1000.



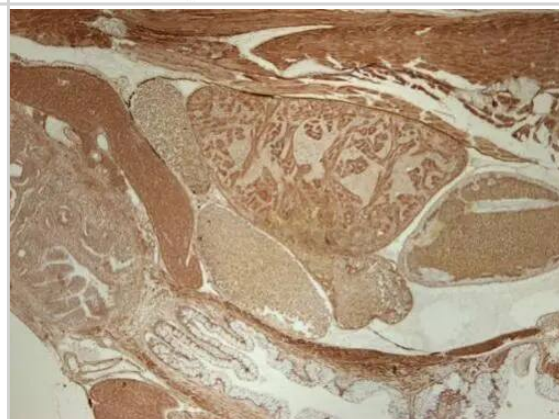
Western Blot: SMAD5 Antibody [NBP2-20413] - SMAD5 antibody detects SMAD5 protein by Western blot analysis. A. 30 ug Rat2 whole cell lysate/extract 10 % SDS-PAGE SMAD5 antibody dilution: 1:1000.



Western Blot: Smad5 Antibody [NBP2-20413] - Smad5 antibody detects smad5 protein by western blot analysis. Various zebrafish tissue extracts (30 ug) were separated by 10 % SDS-PAGE, and the membrane was blotted with Smad5 antibody (NBP2-20413) at a dilution of 1:1000.



Immunohistochemistry: Smad5 Antibody [NBP2-20413] - Immunohistochemical analysis of paraffin-embedded zebrafish tissue, using Smad5 antibody (NBP2-20413) at 1:300 dilution.





Novus Biologicals USA

10730 E. Briarwood Avenue
Centennial, CO 80112
USA
Phone: 303.730.1950
Toll Free: 1.888.506.6887
Fax: 303.730.1966
nb-customerservice@bio-techne.com

Bio-Techne Canada

21 Canmotor Ave
Toronto, ON M8Z 4E6
Canada
Phone: 905.827.6400
Toll Free: 855.668.8722
Fax: 905.827.6402
canada.inquires@bio-techne.com

Bio-Techne Ltd

19 Barton Lane
Abingdon Science Park
Abingdon, OX14 3NB, United Kingdom
Phone: (44) (0) 1235 529449
Free Phone: 0800 37 34 15
Fax: (44) (0) 1235 533420
info.EMEA@bio-techne.com

General Contact Information

www.novusbio.com
Technical Support: nb-technical@bio-techne.com
Orders: nb-customerservice@bio-techne.com
General: novus@novusbio.com

Products Related to NBP2-20413

NBP2-33376H	Blue Marker Antibody (6F4-F6) [HRP]
HAF008	Goat anti-Rabbit IgG Secondary Antibody [HRP]
NB7160	Goat anti-Rabbit IgG (H+L) Secondary Antibody [HRP]
NBP2-24891	Rabbit IgG Isotype Control

Limitations

This product is for research use only and is not approved for use in humans or in clinical diagnosis. Primary Antibodies are guaranteed for 1 year from date of receipt.

For more information on our 100% guarantee, please visit www.novusbio.com/guarantee

Earn gift cards/discounts by submitting a review: www.novusbio.com/reviews/submit/NBP2-20413

Earn gift cards/discounts by submitting a publication using this product:
www.novusbio.com/publications

