

# Product Datasheet

## Transgelin/TAGLN/SM22 alpha Antibody - BSA Free NBP2-20405

Unit Size: 0.1 ml

Aliquot and store at -20C or -80C. Avoid freeze-thaw cycles.

[www.novusbio.com](http://www.novusbio.com)



[technical@novusbio.com](mailto:technical@novusbio.com)

**Reviews: 2**

Protocols, Publications, Related Products, Reviews, Research Tools and Images at:  
[www.novusbio.com/NBP2-20405](http://www.novusbio.com/NBP2-20405)

Updated 9/25/2025 v.20.1

Earn rewards for product  
reviews and publications.

Submit a publication at [www.novusbio.com/publications](http://www.novusbio.com/publications)

Submit a review at [www.novusbio.com/reviews/destination/NBP2-20405](http://www.novusbio.com/reviews/destination/NBP2-20405)



**NBP2-20405**

Transgelin/TAGLN/SM22 alpha Antibody - BSA Free

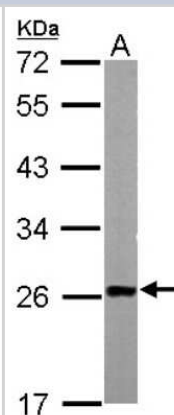
Product Information	
Unit Size	0.1 ml
Concentration	Concentrations vary lot to lot. See vial label for concentration. If unlisted please contact technical services.
Storage	Aliquot and store at -20C or -80C. Avoid freeze-thaw cycles.
Clonality	Polyclonal
Preservative	0.025% Proclin 300
Isotype	IgG
Purity	Antigen Affinity-purified
Buffer	PBS, 1% BSA, 20% Glycerol
Target Molecular Weight	23 kDa

Product Description	
Description	Novus Biologicals Rabbit Transgelin/TAGLN/SM22 alpha Antibody - BSA Free (NBP2-20405) is a polyclonal antibody validated for use in IHC, WB and ICC/IF. All Novus Biologicals antibodies are covered by our 100% guarantee.
Host	Rabbit
Gene ID	6876
Gene Symbol	TAGLN
Species	Human, Mouse, Rat, Bovine
Reactivity Notes	Immunogen displays the following percentage of sequence identity for non-tested species: Chicken (87%), <i>Xenopus laevis</i> (81%).
Immunogen	Recombinant protein encompassing a sequence within the center region of human Transgelin/TAGLN/SM22 alpha. The exact sequence is proprietary.

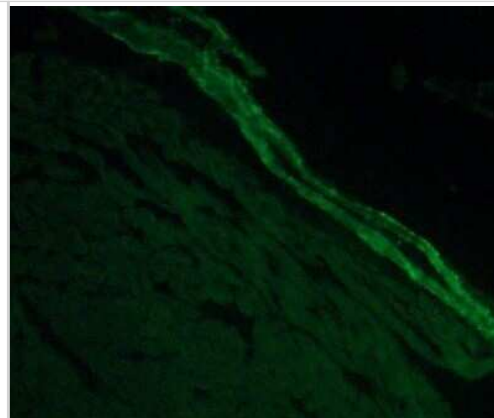
Product Application Details	
Applications	Western Blot, Immunohistochemistry-Paraffin, Immunocytochemistry/Immunofluorescence, Immunohistochemistry, Immunohistochemistry-Frozen
Recommended Dilutions	Western Blot 1:500-1:10000, Immunohistochemistry 1:100, Immunocytochemistry/ Immunofluorescence 1:100-1:1000, Immunohistochemistry-Paraffin 1:100-1:1000, Immunohistochemistry-Frozen

**Images**

Western Blot: Transgelin/TAGLN/SM22 alpha Antibody [NBP2-20405] - Sample (50 ug of whole cell lysate) A: Mouse Liver, 12% SDS PAGE gel, diluted at 1:1000.



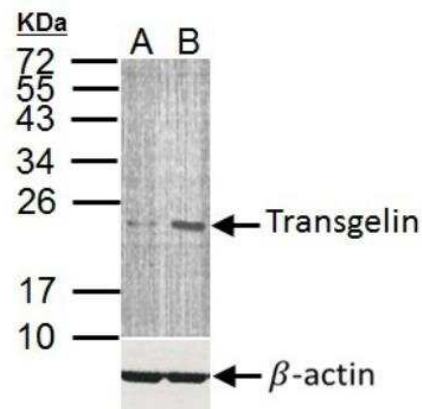
Immunohistochemistry: Transgelin/TAGLN/SM22 alpha Antibody [NBP2-20405] - Coronary artery vascular smooth muscle cells in fixed, frozen adult mouse heart. Primary antibody 1:100 dilution of a 0.2mg/ml solution. This image was submitted via customer Review.



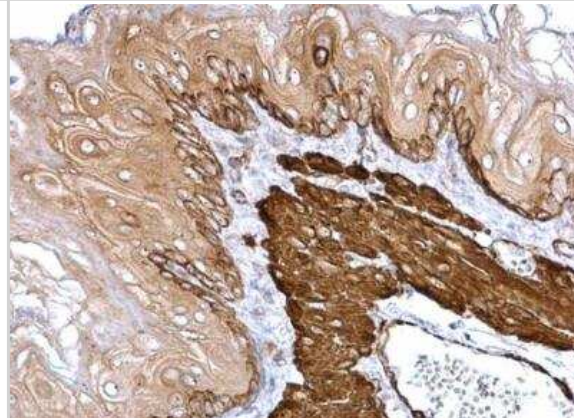
Western Blot: Transgelin/TAGLN/SM22 alpha Antibody [NBP2-20405] - Western blot analysis of Transgelin and beta-actin (lower panel) Sample (35 ug of whole cell lysate)

A: A-10 cell

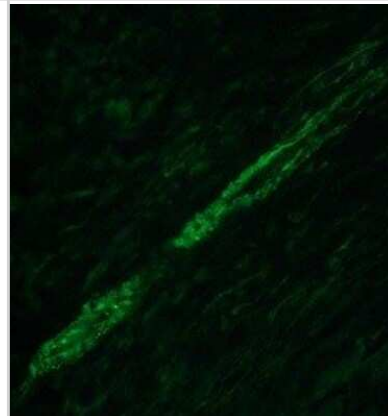
B: A-10 cell treated with MG132 NBP2-20405.



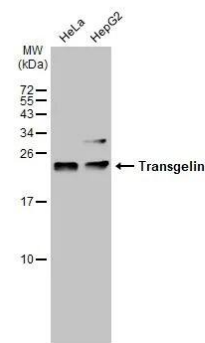
Immunohistochemistry-Paraffin: Transgelin/TAGLN/SM22 alpha Antibody [NBP2-20405] - Paraffin-embedded mouse esophagus. Transgelin antibody dilution: 1:500.



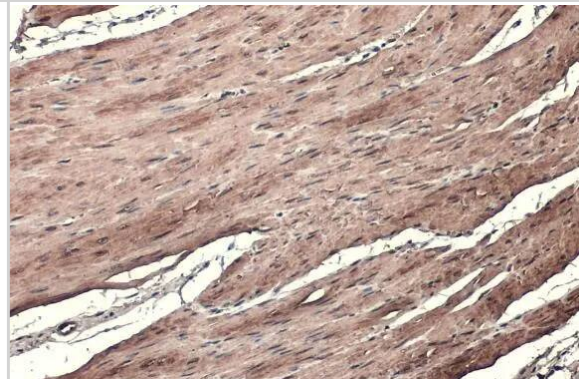
Immunohistochemistry-Paraffin: Transgelin/TAGLN/SM22 alpha Antibody [NBP2-20405] - 40X image of coronary artery vascular smooth muscle stained for transgelin. Primary Antibody dilution of 1:100. This image was submitted via customer Review.



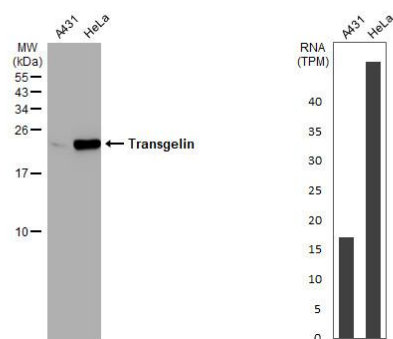
Western Blot: Transgelin/TAGLN/SM22 alpha Antibody [NBP2-20405] - Various whole cell extracts (30 ug) were separated by 15% SDS-PAGE, and the membrane was blotted with Transgelin/TAGLN/SM22 alpha antibody (NBP2-20405) diluted at 1:1000. The HRP-conjugated anti-rabbit IgG antibody was used to detect the primary antibody.



Immunohistochemistry-Paraffin: Transgelin/TAGLN/SM22 alpha Antibody [NBP2-20405] - Transgelin/TAGLN/SM22 alpha antibody detects Transgelin/TAGLN/SM22 alpha protein at cytoplasm by immunohistochemical analysis. Sample: Paraffin-embedded mouse smooth muscle. Transgelin/TAGLN/SM22 alpha stained by Transgelin/TAGLN/SM22 alpha antibody (NBP2-20405) diluted at 1:500. Antigen Retrieval: Citrate buffer, pH 6.0, 15 min



Western Blot: Transgelin/TAGLN/SM22 alpha Antibody [NBP2-20405] - Various whole cell extracts (30 ug) were separated by 15% SDS-PAGE, and the membrane was blotted with Transgelin antibody diluted at 1:1000. The HRP-conjugated anti-rabbit IgG antibody was used to detect the primary antibody. Corresponding RNA expression data for the same cell lines are based on Human Protein Atlas program.

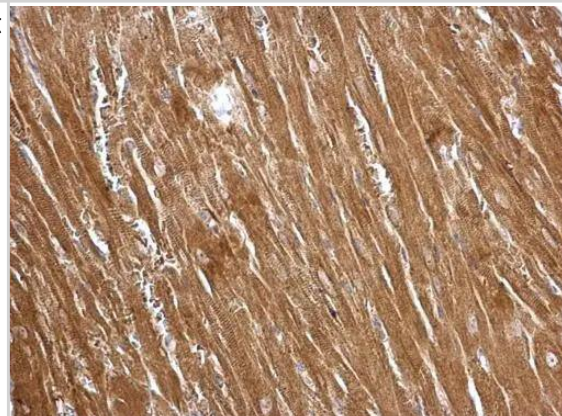


Transgelin antibody detects Transgelin protein at cytosol on mouse heart by immunohistochemical analysis.

Sample: Paraffin-embedded mouse heart.

Transgelin antibody (NBP2-20405) dilution: 1:500.

Antigen Retrieval: Trilogy(TM) (EDTA based, pH 8.0) buffer, 15min

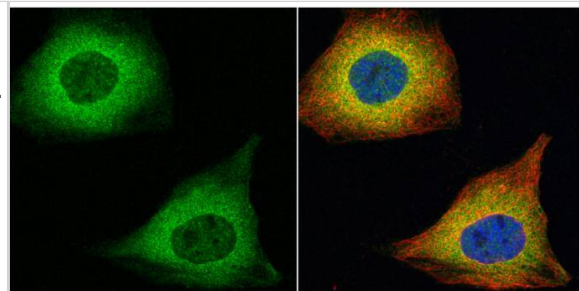


Transgelin antibody detects Transgelin protein at cytoplasm by immunofluorescent analysis.  
Sample: HeLa cells were fixed in 4% paraformaldehyde at RT for 15 min.

Green: Transgelin protein stained by Transgelin antibody (NBP2-20405) diluted at 1:100.

Red: alpha Tubulin, a cytoskeleton marker, stained by alpha Tubulin antibody [GT114] diluted at 1:500.

Blue: Hoechst 33342 staining.





### **Novus Biologicals USA**

10730 E. Briarwood Avenue  
Centennial, CO 80112  
USA  
Phone: 303.730.1950  
Toll Free: 1.888.506.6887  
Fax: 303.730.1966  
nb-customerservice@bio-techne.com

### **Bio-Techne Canada**

21 Canmotor Ave  
Toronto, ON M8Z 4E6  
Canada  
Phone: 905.827.6400  
Toll Free: 855.668.8722  
Fax: 905.827.6402  
canada.inquires@bio-techne.com

### **Bio-Techne Ltd**

19 Barton Lane  
Abingdon Science Park  
Abingdon, OX14 3NB, United Kingdom  
Phone: (44) (0) 1235 529449  
Free Phone: 0800 37 34 15  
Fax: (44) (0) 1235 533420  
info.EMEA@bio-techne.com

### **General Contact Information**

www.novusbio.com  
Technical Support: nb-technical@bio-techne.com  
Orders: nb-customerservice@bio-techne.com  
General: novus@novusbio.com

### **Products Related to NBP2-20405**

---

NBP2-33376H	Blue Marker Antibody (6F4-F6) [HRP]
HAF008	Goat anti-Rabbit IgG Secondary Antibody [HRP]
NB7160	Goat anti-Rabbit IgG (H+L) Secondary Antibody [HRP]
NBP2-24891	Rabbit IgG Isotype Control

---

### **Limitations**

This product is for research use only and is not approved for use in humans or in clinical diagnosis. Primary Antibodies are guaranteed for 1 year from date of receipt.

For more information on our 100% guarantee, please visit [www.novusbio.com/guarantee](http://www.novusbio.com/guarantee)

Earn gift cards/discounts by submitting a review: [www.novusbio.com/reviews/submit/NBP2-20405](http://www.novusbio.com/reviews/submit/NBP2-20405)

Earn gift cards/discounts by submitting a publication using this product:  
[www.novusbio.com/publications](http://www.novusbio.com/publications)

