

Product Datasheet

SGLT1/SLC5A1 Antibody - Azide Free NBP2-20338

Unit Size: 0.1 ml

Aliquot and store at -20C or -80C. Avoid freeze-thaw cycles.

www.novusbio.com



technical@novusbio.com

Publications: 8

Protocols, Publications, Related Products, Reviews, Research Tools and Images at:
www.novusbio.com/NBP2-20338

Updated 3/4/2026 v.20.1

Earn rewards for product
reviews and publications.

Submit a publication at www.novusbio.com/publications

Submit a review at www.novusbio.com/reviews/destination/NBP2-20338



NBP2-20338**SGLT1/SLC5A1 Antibody - Azide Free**

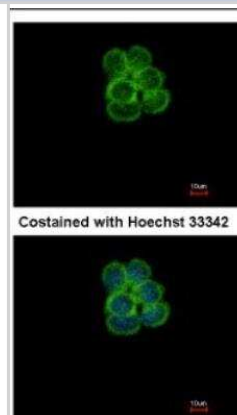
Product Information	
Unit Size	0.1 ml
Concentration	Concentrations vary lot to lot. See vial label for concentration. If unlisted please contact technical services.
Storage	Aliquot and store at -20C or -80C. Avoid freeze-thaw cycles.
Clonality	Polyclonal
Preservative	0.025% Proclin 300
Isotype	IgG
Purity	Antigen Affinity-purified
Buffer	PBS, 1% BSA, 20% Glycerol
Target Molecular Weight	73 kDa

Product Description	
Host	Rabbit
Gene ID	6523
Gene Symbol	SLC5A1
Species	Human, Mouse, Rat
Reactivity Notes	Zebrafish (80%), Cat (89%), Pig (88%), Chicken (82%), Bovine (89%).
Immunogen	Recombinant protein encompassing a sequence within the center region of human SGLT1/SLC5A1. The exact sequence is proprietary.

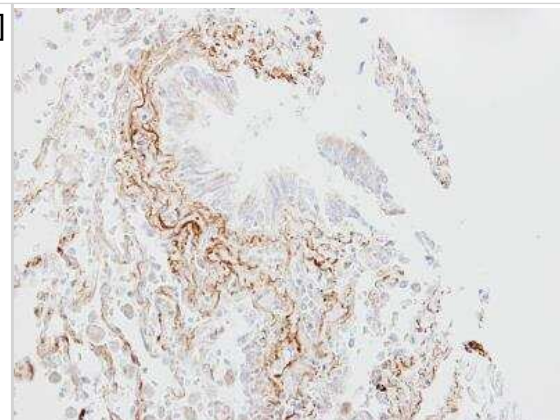
Product Application Details	
Applications	Western Blot, Immunohistochemistry-Paraffin, Immunocytochemistry/Immunofluorescence, Immunohistochemistry, Immunohistochemistry-Frozen
Recommended Dilutions	Western Blot 1:500-1:3000, Immunohistochemistry 1:100-1:1000, Immunocytochemistry/ Immunofluorescence 1:100-1:1000, Immunohistochemistry-Paraffin 1:100-1:1000, Immunohistochemistry-Frozen Assay dependent

Images

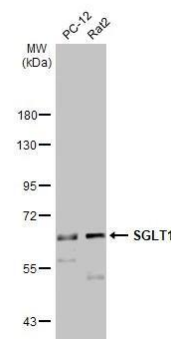
Immunocytochemistry/Immunofluorescence: SGLT1/SLC5A1 Antibody [NBP2-20338] - Analysis of methanol-fixed A431, using SGLT1 antibody at 1:500 dilution.



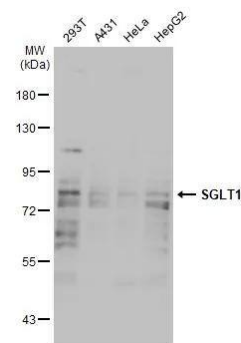
Immunohistochemistry-Paraffin: SGLT1/SLC5A1 Antibody [NBP2-20338]
 - Human lung fibrose tissue, using SGLT1 antibody at 1:100 dilution.
 Antigen Retrieval: Trilogy™ (EDTA based, pH 8.0) buffer, 15min.



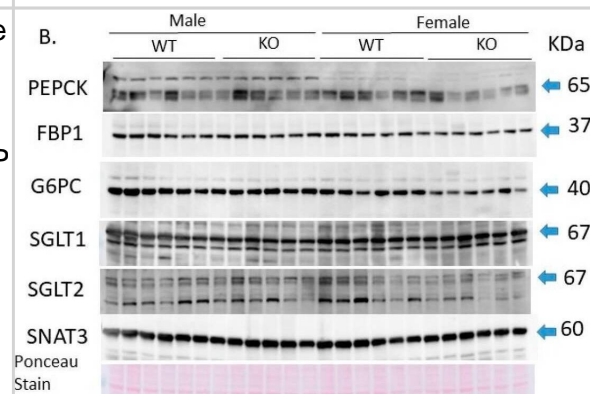
Various whole cell extracts (30 ug) were separated by 7.5% SDS-PAGE, and the membrane was blotted with SGLT1 antibody [N3C3] (NBP2-20338) diluted at 1:1000. The HRP-conjugated anti-rabbit IgG antibody was used to detect the primary antibody, and the signal was developed with Trident ECL plus-Enhanced.



Various whole cell extracts (30 ug) were separated by 7.5% SDS-PAGE, and the membrane was blotted with SGLT1 antibody [N3C3] (NBP2-20338) diluted at 1:1000. The HRP-conjugated anti-rabbit IgG antibody was used to detect the primary antibody.



Proximal tubule gluconeogenesis and glucose transporters—(A) Glucose concentration in the medium from aliquots of PT-enriched suspensions ($n = 6-7$ /mice/sex/genotype undergoing three potential ex vivo treatments in duplicate) incubated for 1 h with gluconeogenic substrates in the presence or absence of gluconeogenic stimulators, i.e., cyclic AMP and dexamethasone or insulin; * indicates a significant difference between groups (by three-way ANOVA with repeated measures for treatment); (B) Western blots of cortex homogenates ($n = 6$ /group) probed with antibodies against the three rate-limiting enzymes in gluconeogenesis (PEPCK, FBP1, and G6PC), the sodium glucose cotransporters (SGLT1 and SGLT2), and the sodium-coupled neutral amino acid transporter type 3 (SNAT3); (C) summary (mean \pm sem) of the Ponceau-Red-stain-normalized band densities for each of the blots with the mean of wild-type males (WTMs) set to 1.0; letters above bars indicate results of Tukey's multiple comparison test (only conducted when a main factor < 0.05) with "A" assigned to the highest mean and all means not different from it, followed by "B", etc. Image collected and cropped by CiteAb from the following open publication (<https://pubmed.ncbi.nlm.nih.gov/37175762>), licensed under a CC-BY license. Not internally tested by Novus Biologicals.



Publications

Kang C, Nam J, Oh J et al. Novel mechanism whereby metformin improves glucose homeostasis: TXNIP–GLUT1 axis modulation enhances intestinal glucotonic effects *Experimental & Molecular Medicine* 2025-08-06 [PMID: 40770064]

Yang, G;Liu, X;Li, Y;Li, L;Xiang, J;Liang, Z;Jiang, M;Yang, S; TRIM65 as a key regulator of ferroptosis and glycolysis in lactate-driven renal tubular injury and diabetic kidney disease *Cell reports* 2025-07-30 [PMID: 40748757]

Herat LY, Matthews JR, Hibbs M et al. SGLT1/2 inhibition improves glycemic control and multi-organ protection in type 1 diabetes *iScience* 2023-08-18 [PMID: 37520739] (Western Blot, Mouse)

Chen S, Overberg K, Ghouse Z et Al. Empagliflozin mitigates cardiac hypertrophy through cardiac RSK/NHE-1 inhibition *Biomed Pharmacother* 2024-03-23 [PMID: 38522235]

Yang G, Xiang J, Yang X et al. Nuclear translocation of SIRT4 mediates deacetylation of U2AF2 to modulate renal fibrosis through alternative splicing-mediated upregulation of CCN2 *eLife* 2024-11-04 [PMID: 39495216]

Yang S, Yang G, Wang X et al. SIRT2 alleviated renal fibrosis by deacetylating SMAD2 and SMAD3 in renal tubular epithelial cells *Cell death & disease* 2023-09-30 [PMID: 37777567] (IF/ICC, Human)

Yang G, Wang X, Xiang J et al. SIRT2 Alleviated Renal Fibrosis by Deacetylating Conserved Lysine 451 on SMAD2 in Renal Tubular Epithelial Cells *SSRN Electronic Journal* 2022-07-28

He P, Haque A, Lin S et al. Inhibition of autotaxin alleviates inflammation and increases the expression of sodium-dependent glucose cotransporter 1 and Na⁺/H⁺ exchanger 3 in SAMP1/Fc mice *Am. J. Physiol. Gastrointest.* 2018-08-17 [PMID: 30118349] (WB, Mouse)





Novus Biologicals USA

10730 E. Briarwood Avenue
Centennial, CO 80112
USA
Phone: 303.730.1950
Toll Free: 1.888.506.6887
Fax: 303.730.1966
nb-customerservice@bio-techne.com

Bio-Techne Canada

21 Canmotor Ave
Toronto, ON M8Z 4E6
Canada
Phone: 905.827.6400
Toll Free: 855.668.8722
Fax: 905.827.6402
canada.inquires@bio-techne.com

Bio-Techne Ltd

19 Barton Lane
Abingdon Science Park
Abingdon, OX14 3NB, United Kingdom
Phone: (44) (0) 1235 529449
Free Phone: 0800 37 34 15
Fax: (44) (0) 1235 533420
info.EMEA@bio-techne.com

General Contact Information

www.novusbio.com
Technical Support: nb-technical@bio-techne.com
Orders: nb-customerservice@bio-techne.com
General: novus@novusbio.com

Products Related to NBP2-20338

HAF008	Goat anti-Rabbit IgG Secondary Antibody [HRP]
NB7160	Goat anti-Rabbit IgG (H+L) Secondary Antibody [HRP]
NBP2-24891	Rabbit IgG Isotype Control
NBP2-38748PEP	SGLT1/SLC5A1 Recombinant Protein Antigen

Limitations

This product is for research use only and is not approved for use in humans or in clinical diagnosis. Primary Antibodies are guaranteed for 1 year from date of receipt.

For more information on our 100% guarantee, please visit www.novusbio.com/guarantee

Earn gift cards/discounts by submitting a review: www.novusbio.com/reviews/submit/NBP2-20338

Earn gift cards/discounts by submitting a publication using this product:
www.novusbio.com/publications

