

Product Datasheet

Pax6 Antibody - BSA Free NBP2-19711

Unit Size: 0.1 ml

Aliquot and store at -20C or -80C. Avoid freeze-thaw cycles.

www.novusbio.com



technical@novusbio.com

Publications: 4

Protocols, Publications, Related Products, Reviews, Research Tools and Images at:
www.novusbio.com/NBP2-19711

Updated 9/25/2025 v.20.1

Earn rewards for product
reviews and publications.

Submit a publication at www.novusbio.com/publications

Submit a review at www.novusbio.com/reviews/destination/NBP2-19711



NBP2-19711

Pax6 Antibody - BSA Free

Product Information	
Unit Size	0.1 ml
Concentration	Concentrations vary lot to lot. See vial label for concentration. If unlisted please contact technical services.
Storage	Aliquot and store at -20C or -80C. Avoid freeze-thaw cycles.
Clonality	Polyclonal
Preservative	0.025% Proclin 300
Isotype	IgG
Purity	Antigen Affinity-purified
Buffer	PBS, 20% Glycerol
Target Molecular Weight	47 kDa

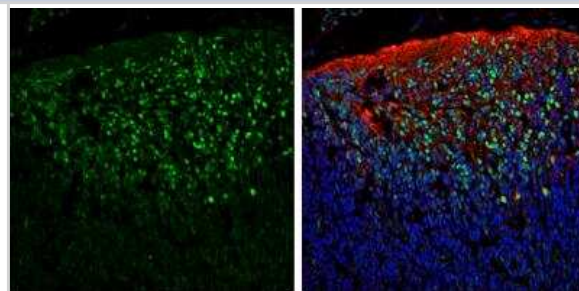
Product Description	
Description	Novus Biologicals Rabbit Pax6 Antibody - BSA Free (NBP2-19711) is a polyclonal antibody validated for use in IHC, WB, ICC/IF and IP. Anti-Pax6 Antibody: Cited in 2 publications. All Novus Biologicals antibodies are covered by our 100% guarantee.
Host	Rabbit
Gene ID	5080
Gene Symbol	PAX6
Species	Human, Mouse, Rat
Reactivity Notes	Xenopus laevis (94%).
Marker	Neural Marker
Immunogen	Recombinant protein encompassing a sequence within the center region of human Pax6. The exact sequence is proprietary.

Product Application Details	
Applications	Western Blot, Immunohistochemistry-Paraffin, Immunocytochemistry/Immunofluorescence, Immunohistochemistry, Immunohistochemistry-Frozen, Immunoprecipitation
Recommended Dilutions	Western Blot 1:500-1:3000, Immunohistochemistry 1:100-1:1000, Immunocytochemistry/ Immunofluorescence 1:100-1:1000, Immunoprecipitation 1:1000-1:1000, Immunohistochemistry-Paraffin 1:100-1:1000, Immunohistochemistry-Frozen 1:100-1:1000

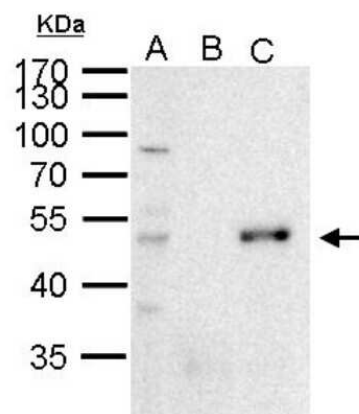


Images

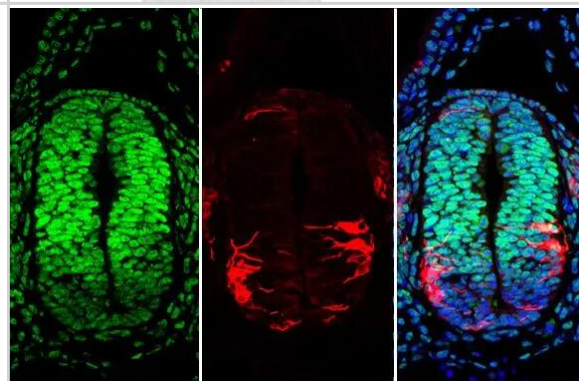
Immunohistochemistry-Frozen: Pax6 Antibody [NBP2-19711] - Frozen sectioned E13.5 Rat brain. Green: PAX6 protein stained by PAX6 antibody diluted at 1:250. Red: beta Tubulin 3/ TUJ1, a mature neuron marker, stained by beta Tubulin 3/ TUJ1 antibody [11710] (NBP2-43559) diluted at 1:500. Blue: Fluoroshield with DAPI.



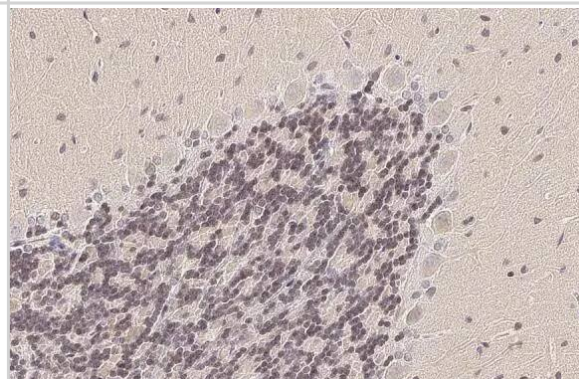
Immunoprecipitation: PAX6 Antibody [NBP2-19711] - Sample: 1000 ug 293T whole cell lysate/extract A. 50 ug 293T whole cell lysate/extract B. Control with 2 ug of preimmune rabbit IgG C. Immunoprecipitation of PAX6 protein by 2 ug of PAX6 antibody 10% SDS-PAGE The immunoprecipitated PAX6 protein was detected by PAX6 antibody diluted at 1:1000. anti-rabbit IgG was used as a secondary reagent.



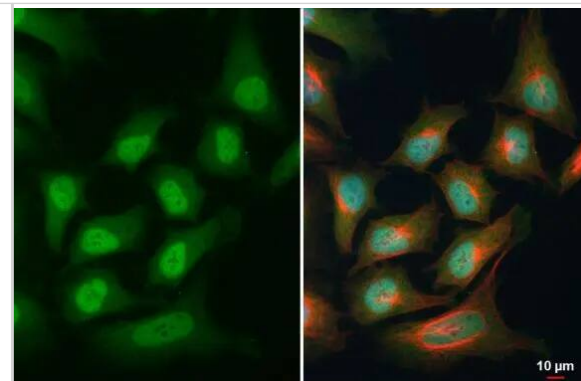
Immunohistochemistry-Paraffin: Pax6 Antibody [NBP2-19711] - Pax6 antibody detects Pax6 protein at nucleus by immunohistochemical analysis. Sample: Paraffin-embedded mouse E10.5 embryo. Green: Pax6 stained by Pax6 antibody (NBP2-19711) diluted at 1:250. Red: beta Tubulin 3/ Tuj1, a cytoskeleton marker, stained by beta Tubulin 3/ Tuj1 antibody [GT11710] diluted at 1:500. Blue: Fluoroshield with DAPI. Antigen Retrieval: Citrate buffer, pH 6.0, 15 min



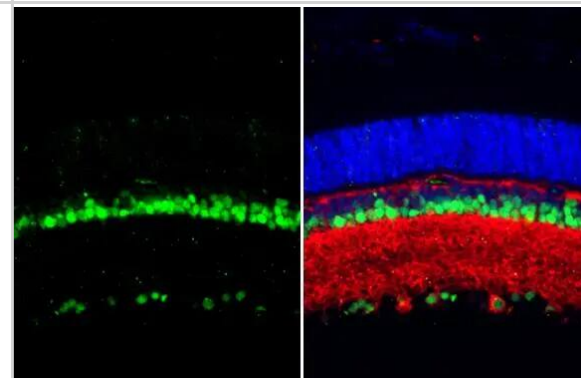
Immunohistochemistry-Paraffin: Pax6 Antibody [NBP2-19711] - Pax6 antibody detects Pax6 protein at nucleus by immunohistochemical analysis. Sample: Paraffin-embedded rat cerebellum. Pax6 stained by Pax6 antibody (NBP2-19711) diluted at 1:500. Antigen Retrieval: Citrate buffer, pH 6.0, 15 min



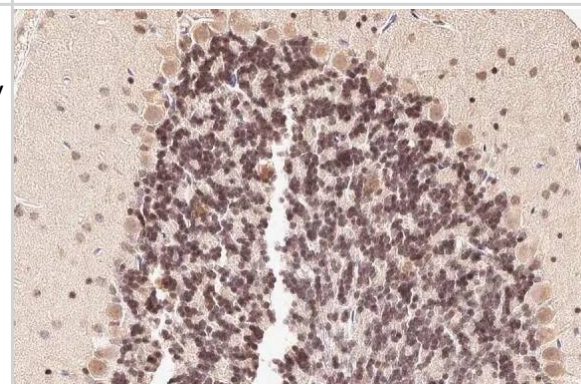
Immunocytochemistry/ Immunofluorescence: Pax6 Antibody [NBP2-19711] - Pax6 antibody detects Pax6 protein at cytoplasm and nucleus by immunofluorescent analysis. Sample: HeLa cells were fixed in 4% paraformaldehyde at RT for 15 min. Green: Pax6 stained by Pax6 antibody (NBP2-19711) diluted at 1:500. Red: alpha Tubulin, a cytoskeleton marker, stained by alpha Tubulin antibody [GT114] diluted at 1:1000. Blue: Fluoroshield with DAPI .



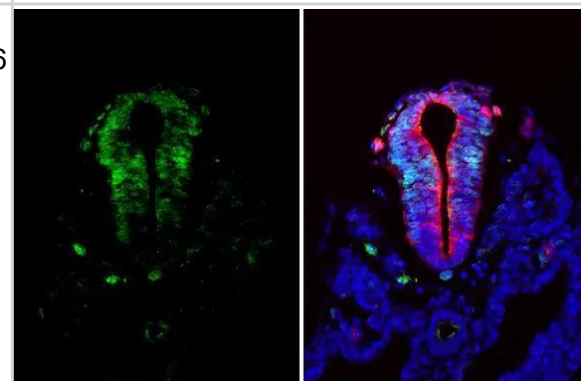
Immunohistochemistry-Paraffin: Pax6 Antibody [NBP2-19711] - Pax6 antibody detects Pax6 protein at nucleus by immunohistochemical analysis. Sample: Paraffin-embedded rat eye. Green: Pax6 stained by Pax6 antibody (NBP2-19711) diluted at 1:250. Red: beta Tubulin 3/ Tuj1, a neural marker, stained by beta Tubulin 3/ Tuj1 antibody [GT11710] diluted at 1:500. Blue: Fluoroshield with DAPI .Antigen Retrieval: Citrate buffer, pH 6.0, 15 min



Immunohistochemistry-Paraffin: Pax6 Antibody [NBP2-19711] - Pax6 antibody detects Pax6 protein at nucleus by immunohistochemical analysis. Sample: Paraffin-embedded mouse cerebellum. Pax6 stained by Pax6 antibody (NBP2-19711) diluted at 1:500. Antigen Retrieval: Citrate buffer, pH 6.0, 15 min

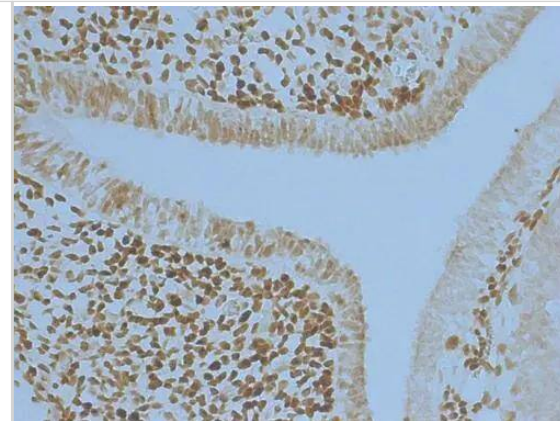


PAX6 antibody detects PAX6 protein by immunohistochemical analysis. Sample: Paraffin-embedded mouse E10.5 embryo. Green: PAX6 stained by PAX6 antibody (NBP2-19711) diluted at 1:500. Red: beta Tubulin 3/ Tuj1, a Cytoskeleton marker, stained by beta Tubulin 3/ Tuj1 antibody [GT11710] diluted at 1:500. Blue: Hoechst 33342 staining. Antigen Retrieval: Citrate buffer, pH 6.0, 15 min

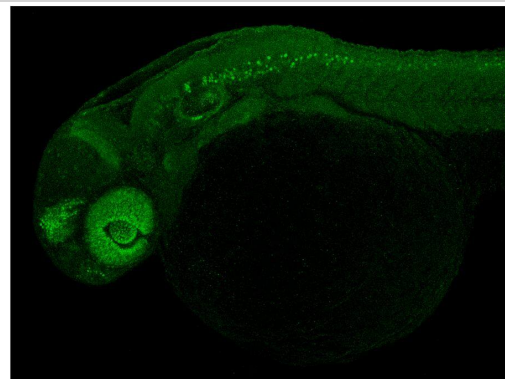


PAX6 antibody detects PAX6 protein at nucleus in embryonic mouse brain by immunohistochemical analysis.

Sample: Frozen section of embryonic mouse brain (mE12.5).
PAX6 antibody (NBP2-19711) diluted at 1:250.



PAX6 antibody detects PAX6 protein by immunohistochemical analysis. Sample: Paraformaldehyde-fixed 2 days-post-fertilization zebrafish embryo. Green: PAX6 stained by PAX6 antibody (NBP2-19711) diluted at 1:200. Antigen Retrieval: Tris-HCl buffer, pH 9.0, 20 min at 70C

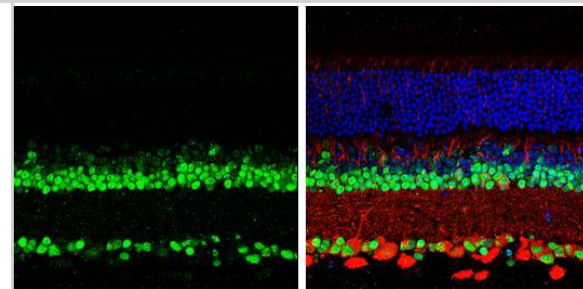


PAX6 antibody detects PAX6 protein by immunohistochemical analysis. Samples: Paraffin-Embedded mouse retina. Green: PAX6 protein stained by PAX6 antibody (NBP2-19711) diluted at 1:250.

Red: beta Tubulin 3/ Tuj1, stained by beta Tubulin 3/ Tuj1 antibody [GT1338] diluted at 1:500.

Blue: Fluoroshield with DAPI .

Antigen Retrieval: Citrate buffer, pH 6.0, 15 min



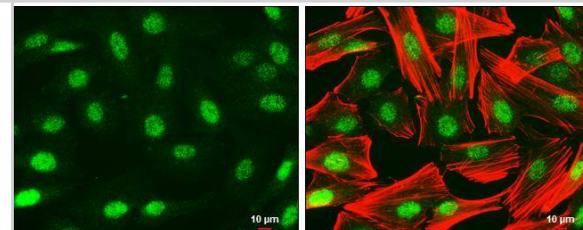
PAX6 antibody detects PAX6 protein at nucleus by immunofluorescent analysis.

Sample: SK-N-SH cells were fixed in 4% paraformaldehyde at RT for 15 min.

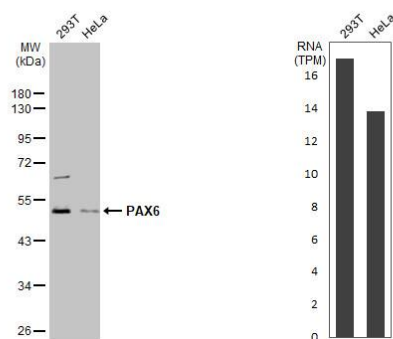
Green: PAX6 protein stained by PAX6 antibody (NBP2-19711) diluted at 1:500.

Red: Phalloidin, a cytoskeleton marker, diluted at 1:50.

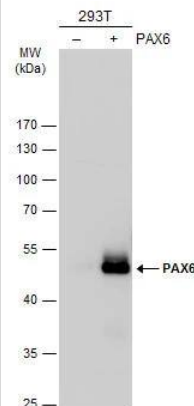
Scale bar = 10 um.



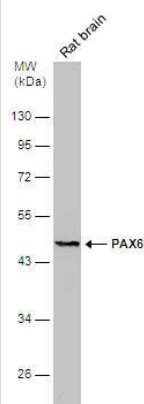
Various whole cell extracts (30 ug) were separated by 10% SDS-PAGE, and the membrane was blotted with PAX6 antibody (NBP2-19711) diluted at 1:1000. The HRP-conjugated anti-rabbit IgG antibody was used to detect the primary antibody. Corresponding RNA expression data for the same cell lines are based on Human Protein Atlas program.



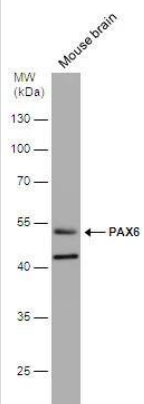
Non-transfected (-) and transfected (+) 293T whole cell extracts (30 ug) were separated by 10% SDS-PAGE, and the membrane was blotted with PAX6 antibody (NBP2-19711) diluted at 1:1000. The HRP-conjugated anti-rabbit IgG antibody was used to detect the primary antibody.



Rat tissue extract (50 ug) was separated by 10% SDS-PAGE, and the membrane was blotted with PAX6 antibody (NBP2-19711) diluted at 1:500. The HRP-conjugated anti-rabbit IgG antibody was used to detect the primary antibody.



Mouse tissue extract (50 ug) was separated by 10% SDS-PAGE, and the membrane was blotted with PAX6 antibody (NBP2-19711) diluted at 1:1000. The HRP-conjugated anti-rabbit IgG antibody was used to detect the primary antibody.



Publications

Shah S, Medisetti S, Fernandes J et al. Chd4 remodels chromatin to control retinal cell type specification and lineage termination. *Development (Cambridge, England)* 2025-09-04 [PMID: 40905097]

Larrigan S, Joshi SV, Mattar P Divergent phenotypes in constitutive versus conditional mutant mouse models of Sifrim-Hitz-Weiss syndrome *Human molecular genetics* 2023-09-21 [PMID: 37738575]

Larrigan S, Joshi S, Mattar P Divergent phenotypes in germline versus conditional mutant mouse models of Sifrim-Hitz-Weiss Syndrome *bioRxiv* 2023-02-16 (IHC-Fr, Mouse)

Wen Y, Jin S. Production of neural stem cells from human pluripotent stem cells *J. Biotechnol.* 2014-08-20 [PMID: 25150215]





Novus Biologicals USA

10730 E. Briarwood Avenue
Centennial, CO 80112
USA
Phone: 303.730.1950
Toll Free: 1.888.506.6887
Fax: 303.730.1966
nb-customerservice@bio-techne.com

Bio-Techne Canada

21 Canmotor Ave
Toronto, ON M8Z 4E6
Canada
Phone: 905.827.6400
Toll Free: 855.668.8722
Fax: 905.827.6402
canada.inquires@bio-techne.com

Bio-Techne Ltd

19 Barton Lane
Abingdon Science Park
Abingdon, OX14 3NB, United Kingdom
Phone: (44) (0) 1235 529449
Free Phone: 0800 37 34 15
Fax: (44) (0) 1235 533420
info.EMEA@bio-techne.com

General Contact Information

www.novusbio.com
Technical Support: nb-technical@bio-techne.com
Orders: nb-customerservice@bio-techne.com
General: novus@novusbio.com

Products Related to NBP2-19711

NBP2-33376H	Blue Marker Antibody (6F4-F6) [HRP]
HAF008	Goat anti-Rabbit IgG Secondary Antibody [HRP]
NB7160	Goat anti-Rabbit IgG (H+L) Secondary Antibody [HRP]
NBP2-24891	Rabbit IgG Isotype Control

Limitations

This product is for research use only and is not approved for use in humans or in clinical diagnosis. Primary Antibodies are guaranteed for 1 year from date of receipt.

For more information on our 100% guarantee, please visit www.novusbio.com/guarantee

Earn gift cards/discounts by submitting a review: www.novusbio.com/reviews/submit/NBP2-19711

Earn gift cards/discounts by submitting a publication using this product:
www.novusbio.com/publications

