

Product Datasheet

Lamin A + C Antibody - Azide Free NBP2-19324

Unit Size: 0.1 ml

Aliquot and store at -20C or -80C. Avoid freeze-thaw cycles.

www.novusbio.com



technical@novusbio.com

Publications: 4

Protocols, Publications, Related Products, Reviews, Research Tools and Images at:
www.novusbio.com/NBP2-19324

Updated 2/26/2026 v.20.1

Earn rewards for product
reviews and publications.

Submit a publication at www.novusbio.com/publications

Submit a review at www.novusbio.com/reviews/destination/NBP2-19324



NBP2-19324

Lamin A + C Antibody - Azide Free

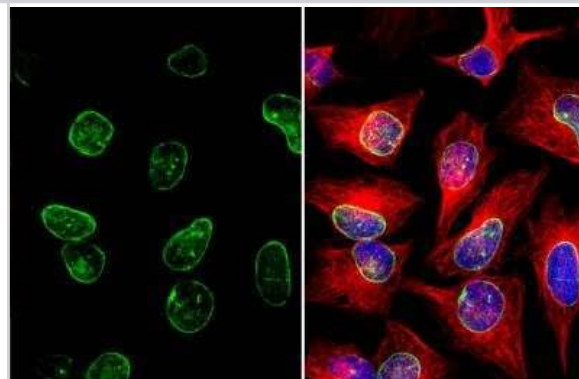
Product Information	
Unit Size	0.1 ml
Concentration	Concentrations vary lot to lot. See vial label for concentration. If unlisted please contact technical services.
Storage	Aliquot and store at -20C or -80C. Avoid freeze-thaw cycles.
Clonality	Polyclonal
Preservative	0.025% Proclin 300
Isotype	IgG
Purity	Antigen Affinity-purified
Buffer	PBS, 1% BSA, 20% Glycerol
Target Molecular Weight	74 kDa

Product Description	
Description	Novus Biologicals Knockout (KO) Validated Rabbit Lamin A + C Antibody - BSA Free (NBP2-19324) is a polyclonal antibody validated for use in IHC, WB, ICC/IF and IP. Anti-Lamin A + C Antibody: Cited in 4 publications. All Novus Biologicals antibodies are covered by our 100% guarantee.
Host	Rabbit
Gene ID	4000
Gene Symbol	LMNA
Species	Human, Mouse, Rat
Reactivity Notes	Xenopus laevis (81%).
Marker	Nuclear Envelope Marker
Immunogen	Recombinant protein encompassing a sequence within the center region of human Lamin A + C. The exact sequence is proprietary.

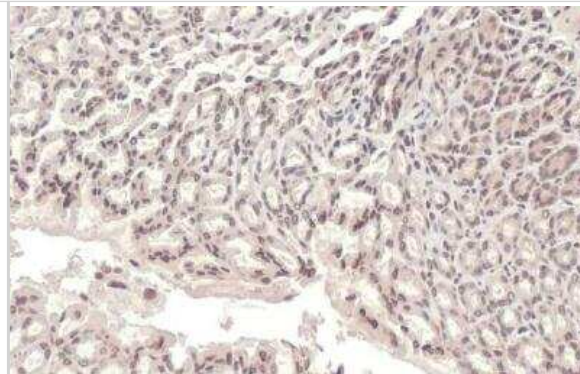
Product Application Details	
Applications	Western Blot, Immunohistochemistry-Paraffin, Immunocytochemistry/Immunofluorescence, Immunohistochemistry, Immunoprecipitation, Knockout Validated
Recommended Dilutions	Western Blot 1:500-1:3000, Immunohistochemistry 1:100-1:1000, Immunocytochemistry/ Immunofluorescence 1:100-1:1000, Immunoprecipitation 1:100-1:500, Immunohistochemistry-Paraffin 1:100-1:1000, Knockout Validated

Images

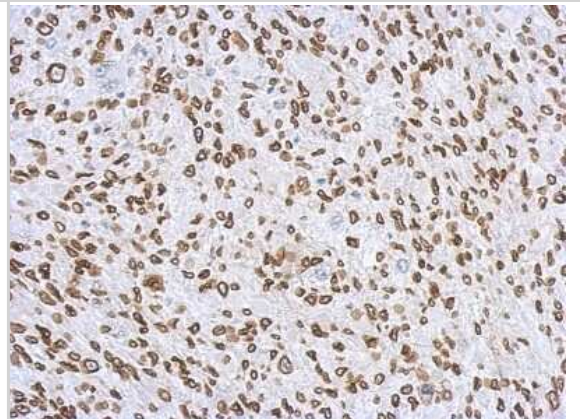
Immunocytochemistry/Immunofluorescence: Lamin A + C Antibody [NBP2-19324] - HeLa cells were fixed in ice-cold MeOH for 5 min. Green: Lamin A + C stained by Lamin A + C antibody diluted at 1:1000. Red: alpha Tubulin, stained by alpha Tubulin antibody [114] (NBP2-43837) diluted at 1:500. Blue: Fluoroshield with DAPI.



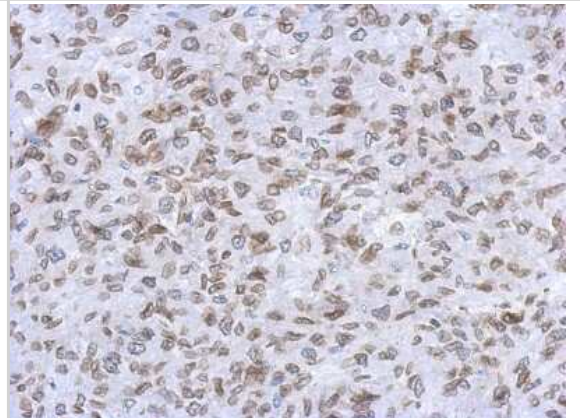
Immunohistochemistry-Paraffin: Lamin A + C Antibody [NBP2-19324] - Mouse stomach. Lamin A + C stained by Lamin A + C antibody diluted at 1:100. Antigen Retrieval: Citrate buffer, pH 6.0, 15 min.



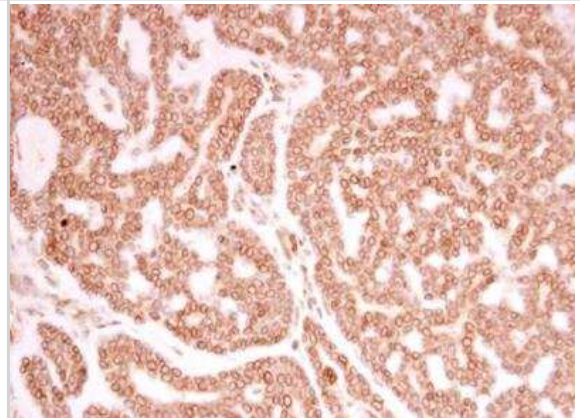
Immunohistochemistry-Paraffin: Lamin A + C Antibody [NBP2-19324] - C2C12 xenograft, using Lamin A + C antibody at 1:500 dilution. Antigen Retrieval: Trilogy™ (EDTA based, pH 8.0) buffer, 15min.



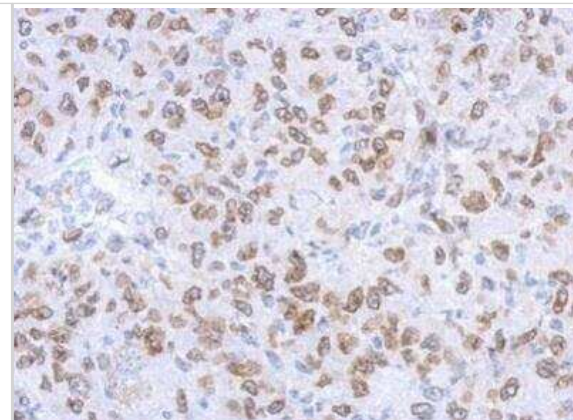
Immunohistochemistry-Paraffin: Lamin A + C Antibody [NBP2-19324] - RT2 xenograft, using Lamin A + C antibody at 1:500 dilution. Antigen Retrieval: Trilogy™ (EDTA based, pH 8.0) buffer, 15min.



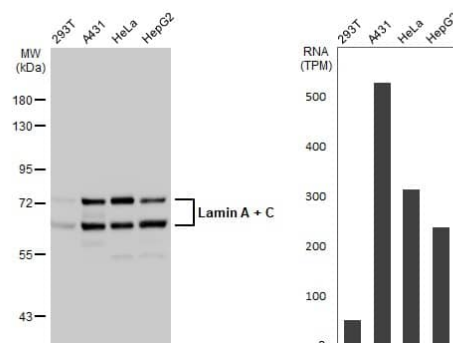
Immunohistochemistry-Paraffin: Lamin A + C Antibody [NBP2-19324] - Human breast carcinoma. Lamin A + C antibody diluted at 1:250. Antigen Retrieval: Trilogy™ (EDTA based, pH 8.0) buffer, 15min.



Immunohistochemistry-Paraffin: Lamin A + C Antibody [NBP2-19324] - Mahlarvu xenograft, using Lamin A + C antibody at 1:500 dilution. Antigen Retrieval: Trilogy™ (EDTA based, pH 8.0) buffer, 15min



Western Blot: Lamin A + C Antibody [NBP2-19324] - Various whole cell extracts (30 ug) were separated by 7.5% SDS-PAGE, and the membrane was blotted with Lamin A + C antibody diluted at 1:2000. The HRP-conjugated anti-rabbit IgG antibody was used to detect the primary antibody. Corresponding RNA expression data for the same cell lines are based on Human Protein Atlas program.



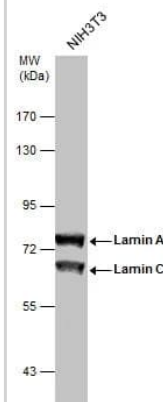
Sample (30 ug of whole cell lysate)

A: NIH-3T3

7.5% SDS PAGE

NBP2-19324 diluted at 1:1000

The HRP-conjugated anti-rabbit IgG antibody was used to detect the primary antibody.



Lamin A + C antibody immunoprecipitates Lamin A + C protein in IP experiments.

IP samples: HeLa whole cell extract

A. 50 ug HeLa whole cell extract

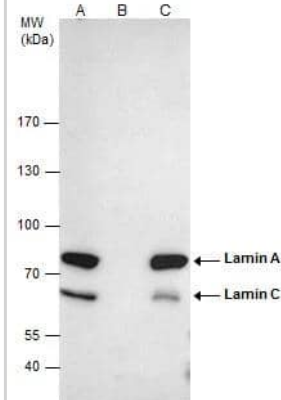
B. Control with 4 ug of preimmune Rabbit IgG

C. Immunoprecipitation of Lamin A + C protein by 4 ug Lamin A + C antibody (NBP2-19324)

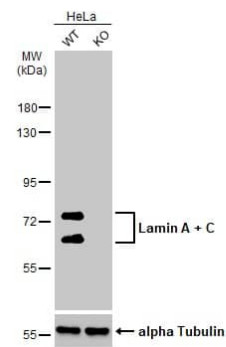
7.5 % SDS-PAGE

The immunoprecipitated Lamin A + C protein was detected by Lamin A + C antibody (NBP2-19324) diluted at 1:500.

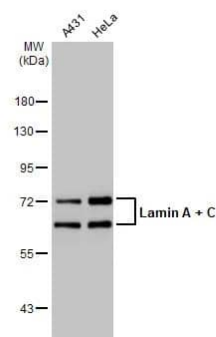
[EasyBlot anti-rabbit IgG was used as a secondary reagent]



Wild-type (WT) and Lamin A + C knockout (KO) HeLa cell extracts (30 ug) were separated by 7.5% SDS-PAGE, and the membrane was blotted with Lamin A + C antibody (NBP2-19324) diluted at 1:1000. The HRP-conjugated anti-rabbit IgG antibody was used to detect the primary antibody.



Various whole cell extracts (30 ug) were separated by 7.5% SDS-PAGE, and the membrane was blotted with Lamin A + C antibody (NBP2-19324) diluted at 1:5000. The HRP-conjugated anti-rabbit IgG antibody was used to detect the primary antibody.



Publications

Yang JG, Sun B, Wang Z et al. Exosome-targeted delivery of METTL14 regulates NFATc1 m6A methylation levels to correct osteoclast-induced bone resorption *Cell death & disease* 2023-11-13 [PMID: 37957146]

Brown SJ, olti? D, Synowsky SA et al. AAV9-mediated SMN gene therapy rescues cardiac desmin but not Lamin a/C and elastin dysregulation in *Smn*^{2B/-} spinal muscular atrophy mice *Human molecular genetics* 2023-07-27 [PMID: 37498175] (IHC-Fr, Mouse)

Edara VV, Nooka S, Proulx J et al. beta-Catenin Regulates Wound Healing and IL-6 Expression in Activated Human Astrocytes *Biomedicines* 2020-11-06 [PMID: 33171974] (Human)

Details:

WES analysis of human beta-catenin knockdown astrocytes.

Soltic D, Shorrock HK, Allardyce H et al. Lamin A/C dysregulation contributes to cardiac pathology in a mouse model of severe spinal muscular atrophy *Hum. Mol. Genet.* 2019-08-09 [PMID: 31397869]



Novus Biologicals USA

10730 E. Briarwood Avenue
Centennial, CO 80112
USA
Phone: 303.730.1950
Toll Free: 1.888.506.6887
Fax: 303.730.1966
nb-customerservice@bio-techne.com

Bio-Techne Canada

21 Canmotor Ave
Toronto, ON M8Z 4E6
Canada
Phone: 905.827.6400
Toll Free: 855.668.8722
Fax: 905.827.6402
canada.inquires@bio-techne.com

Bio-Techne Ltd

19 Barton Lane
Abingdon Science Park
Abingdon, OX14 3NB, United Kingdom
Phone: (44) (0) 1235 529449
Free Phone: 0800 37 34 15
Fax: (44) (0) 1235 533420
info.EMEA@bio-techne.com

General Contact Information

www.novusbio.com
Technical Support: nb-technical@bio-techne.com
Orders: nb-customerservice@bio-techne.com
General: novus@novusbio.com

Products Related to NBP2-19324

NBP2-33376H	Blue Marker Antibody (6F4-F6) [HRP]
HAF008	Goat anti-Rabbit IgG Secondary Antibody [HRP]
NB7160	Goat anti-Rabbit IgG (H+L) Secondary Antibody [HRP]
NBP2-24891	Rabbit IgG Isotype Control

Limitations

This product is for research use only and is not approved for use in humans or in clinical diagnosis. Primary Antibodies are guaranteed for 1 year from date of receipt.

For more information on our 100% guarantee, please visit www.novusbio.com/guarantee

Earn gift cards/discounts by submitting a review: www.novusbio.com/reviews/submit/NBP2-19324

Earn gift cards/discounts by submitting a publication using this product:
www.novusbio.com/publications

