

Product Datasheet

Lactate Dehydrogenase A/LDHA Antibody - Azide Free NBP2-19320

Unit Size: 0.1 ml

Aliquot and store at -20C or -80C. Avoid freeze-thaw cycles.

www.novusbio.com



technical@novusbio.com

Publications: 1

Protocols, Publications, Related Products, Reviews, Research Tools and Images at:
www.novusbio.com/NBP2-19320

Updated 9/9/2025 v.20.1

Earn rewards for product
reviews and publications.

Submit a publication at www.novusbio.com/publications

Submit a review at www.novusbio.com/reviews/destination/NBP2-19320



NBP2-19320**Lactate Dehydrogenase A/LDHA Antibody - Azide Free**

Product Information	
Unit Size	0.1 ml
Concentration	Concentrations vary lot to lot. See vial label for concentration. If unlisted please contact technical services.
Storage	Aliquot and store at -20C or -80C. Avoid freeze-thaw cycles.
Clonality	Polyclonal
Preservative	0.025% Proclin 300
Isotype	IgG
Purity	Antigen Affinity-purified
Buffer	PBS, 1% BSA, 20% Glycerol
Target Molecular Weight	37 kDa

Product Description	
Description	Novus Biologicals Rabbit Lactate Dehydrogenase A/LDHA Antibody - Azide Free (NBP2-19320) is a polyclonal antibody validated for use in IHC, WB and ICC/IF. Anti-Lactate Dehydrogenase A/LDHA Antibody: Cited in 1 publication. All Novus Biologicals antibodies are covered by our 100% guarantee.
Host	Rabbit
Gene ID	3939
Gene Symbol	LDHA
Species	Human, Mouse, Rat
Reactivity Notes	Xenopus laevis (80%).
Immunogen	Recombinant protein encompassing a sequence within the center region of human Lactate Dehydrogenase A/LDHA. The exact sequence is proprietary.

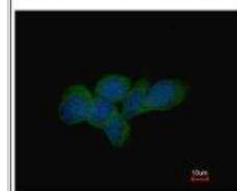
Product Application Details	
Applications	Western Blot, Immunohistochemistry-Paraffin, Immunocytochemistry/Immunofluorescence, Immunohistochemistry
Recommended Dilutions	Western Blot 1:500-1:3000, Immunohistochemistry 1:100-1:1000, Immunocytochemistry/ Immunofluorescence 1:100-1:1000, Immunohistochemistry-Paraffin 1:100-1:1000

Images

Immunocytochemistry/Immunofluorescence: Lactate Dehydrogenase A/LDHA Antibody [NBP2-19320] - Analysis of methanol-fixed A431, using LDHA antibody at 1:500 dilution.



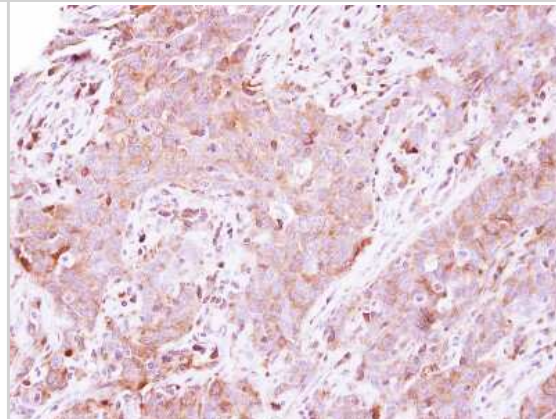
Costained with Hoechst 33342



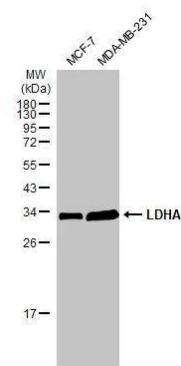
Immunohistochemistry-Paraffin: Lactate Dehydrogenase A/LDHA Antibody [NBP2-19320] - Mouse liver. LDHA stained by LDHA antibody diluted at 1:500. Antigen Retrieval: Citrate buffer, pH 6.0, 15 min.



Immunohistochemistry-Paraffin: Lactate Dehydrogenase A/LDHA Antibody [NBP2-19320] - Human lung papillary adenocarcinoma, using LDHA antibody at 1:500 dilution. Antigen Retrieval: Trilogy™ (EDTA based, pH 8.0) buffer, 15min.



Various whole cell extracts (30 ug) were separated by 12% SDS-PAGE, and the membrane was blotted with LDHA antibody (NBP2-19320) diluted at 1:1000. The HRP-conjugated anti-rabbit IgG antibody was used to detect the primary antibody.



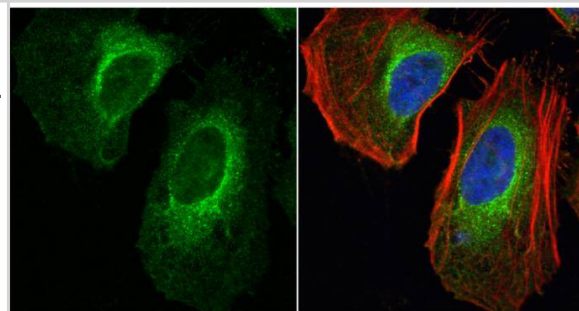
LDHA antibody detects LDHA protein at cytoplasm by immunofluorescent analysis.

Sample: HeLa cells were fixed in 4% paraformaldehyde at RT for 15 min.

Green: LDHA protein stained by LDHA antibody (NBP2-19320) diluted at 1:1000.

Red: phalloidin, a cytoskeleton marker, stained by phalloidin (invitrogen, A12380) diluted at 1:200.

Blue: Hoechst 33342 staining.



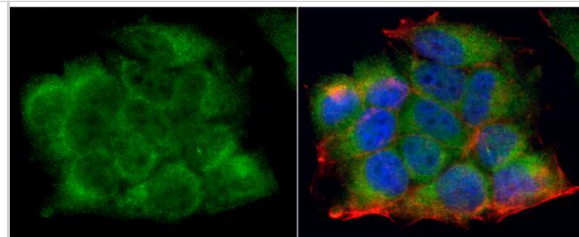
LDHA antibody detects LDHA protein at cytoplasm by immunofluorescent analysis.

Sample: MCF7 cells were fixed in 4% paraformaldehyde at RT for 15 min.

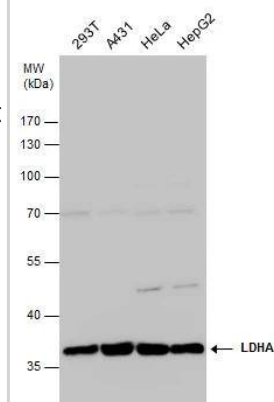
Green: LDHA protein stained by LDHA antibody (NBP2-19320) diluted at 1:1000.

Red: phalloidin, a cytoskeleton marker, stained by phalloidin (invitrogen, A12380) diluted at 1:200.

Blue: Hoechst 33342 staining.



LDHA antibody detects LDHA protein by western blot analysis. Various whole cell extracts (30 ug) were separated by 10% SDS-PAGE, and the membrane was blotted with LDHA antibody (NBP2-19320) diluted at 1:1000. The HRP-conjugated anti-rabbit IgG antibody was used to detect the primary antibody.



LDHA antibody detects LDHA protein by western blot analysis.

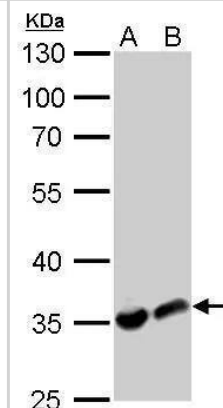
A. 30 ug PC-12 whole cell lysate/extract

B. 30 ug Rat2 whole cell lysate/extract

10% SDS-PAGE

LDHA antibody (NBP2-19320) dilution: 1:1000

The HRP-conjugated anti-rabbit IgG antibody was used to detect the primary antibody.



LDHA antibody detects LDHA protein by western blot analysis.

A. 30 ug Neuro2A whole cell lysate/extract

B. 30 ug C8D30 whole cell lysate/extract

C. 30 ug NIH-3T3 whole cell lysate/extract

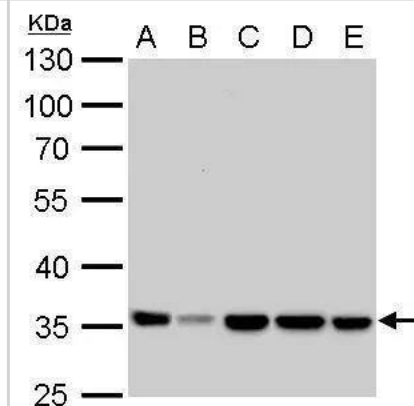
D. 30 ug Raw264.7 whole cell lysate/extract

E. 30 ug C2C12 whole cell lysate/extract

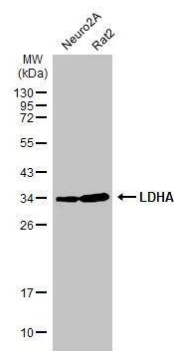
10% SDS-PAGE

LDHA antibody (NBP2-19320) dilution: 1:1000

The HRP-conjugated anti-rabbit IgG antibody was used to detect the primary antibody.



Various whole cell extracts (30 ug) were separated by 12% SDS-PAGE, and the membrane was blotted with LDHA antibody (NBP2-19320) diluted at 1:1000. The HRP-conjugated anti-rabbit IgG antibody was used to detect the primary antibody.



Publications

Silagi ES, Novais EJ, Bisetto S et al. Lactate Efflux from Intervertebral Disc Cells is Required for Maintenance of Spine Health J. Bone Miner. Res. 2019-11-06 [PMID: 31692093] (IF/IHC, IHC-P, Mouse)



Novus Biologicals USA

10730 E. Briarwood Avenue
Centennial, CO 80112
USA
Phone: 303.730.1950
Toll Free: 1.888.506.6887
Fax: 303.730.1966
nb-customerservice@bio-techne.com

Bio-Techne Canada

21 Canmotor Ave
Toronto, ON M8Z 4E6
Canada
Phone: 905.827.6400
Toll Free: 855.668.8722
Fax: 905.827.6402
canada.inquires@bio-techne.com

Bio-Techne Ltd

19 Barton Lane
Abingdon Science Park
Abingdon, OX14 3NB, United Kingdom
Phone: (44) (0) 1235 529449
Free Phone: 0800 37 34 15
Fax: (44) (0) 1235 533420
info.EMEA@bio-techne.com

General Contact Information

www.novusbio.com
Technical Support: nb-technical@bio-techne.com
Orders: nb-customerservice@bio-techne.com
General: novus@novusbio.com

Products Related to NBP2-19320

NBP2-33376H	Blue Marker Antibody (6F4-F6) [HRP]
HAF008	Goat anti-Rabbit IgG Secondary Antibody [HRP]
NB7160	Goat anti-Rabbit IgG (H+L) Secondary Antibody [HRP]
NBP2-24891	Rabbit IgG Isotype Control

Limitations

This product is for research use only and is not approved for use in humans or in clinical diagnosis. Primary Antibodies are guaranteed for 1 year from date of receipt.

For more information on our 100% guarantee, please visit www.novusbio.com/guarantee

Earn gift cards/discounts by submitting a review: www.novusbio.com/reviews/submit/NBP2-19320

Earn gift cards/discounts by submitting a publication using this product:
www.novusbio.com/publications

