

Product Datasheet

Lyn Antibody NBP2-17188

Unit Size: 0.1 ml

Aliquot and store at -20C or -80C. Avoid freeze-thaw cycles.

www.novusbio.com



technical@novusbio.com

Protocols, Publications, Related Products, Reviews, Research Tools and Images at:
www.novusbio.com/NBP2-17188

Updated 9/22/2025 v.20.1

Earn rewards for product
reviews and publications.

Submit a publication at www.novusbio.com/publications

Submit a review at www.novusbio.com/reviews/destination/NBP2-17188



NBP2-17188

Lyn Antibody

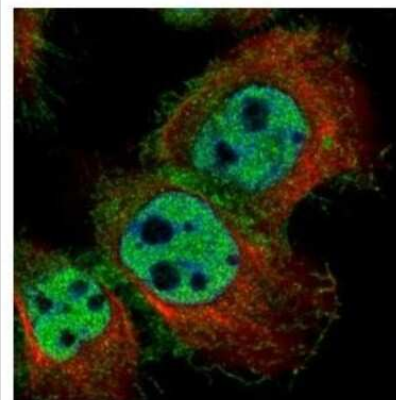
Product Information	
Unit Size	0.1 ml
Concentration	Concentrations vary lot to lot. See vial label for concentration. If unlisted please contact technical services.
Storage	Aliquot and store at -20C or -80C. Avoid freeze-thaw cycles.
Clonality	Polyclonal
Preservative	0.01% Thimerosal
Isotype	IgG
Purity	Antigen Affinity-purified
Buffer	PBS, 1% BSA, 20% Glycerol
Target Molecular Weight	59 kDa

Product Description	
Description	Novus Biologicals Rabbit Lyn Antibody (NBP2-17188) is a polyclonal antibody validated for use in IHC, WB, ICC/IF and IP. All Novus Biologicals antibodies are covered by our 100% guarantee.
Host	Rabbit
Gene ID	4067
Gene Symbol	LYN
Species	Human, Mouse
Reactivity Notes	Xenopus laevis (83%), Sheep (87%).
Immunogen	Recombinant protein encompassing a sequence within the center region of human Lyn. The exact sequence is proprietary.

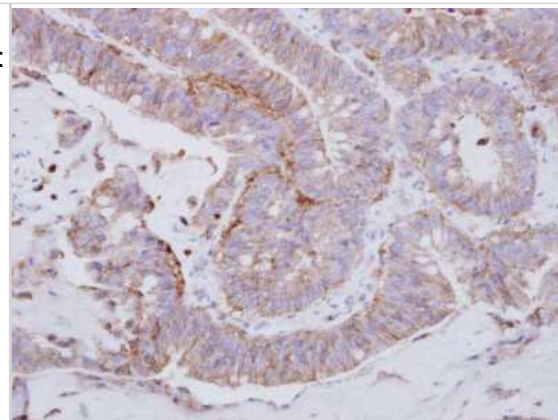
Product Application Details	
Applications	Western Blot, Immunohistochemistry-Paraffin, Immunocytochemistry/Immunofluorescence, Immunohistochemistry, Immunoprecipitation
Recommended Dilutions	Western Blot 1:500-1:3000, Immunohistochemistry 1:100-1:1000, Immunocytochemistry/ Immunofluorescence 1:100-1:1000, Immunoprecipitation 1:100-1:500, Immunohistochemistry-Paraffin 1:100-1:1000

Images

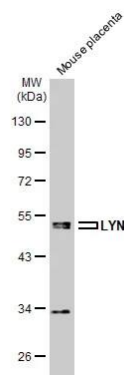
Immunocytochemistry/Immunofluorescence: Lyn Antibody [NBP2-17188]
 - Confocal immunofluorescence analysis of paraformaldehyde-fixed A431, using LYN antibody (Green) at 1:500 dilution. Alpha-tubulin filaments are labeled with Alpha-tubulin antibody (Red) at 1:2000.



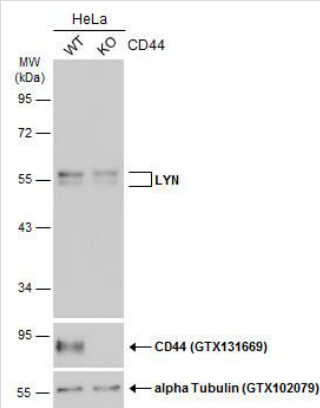
Immunohistochemistry-Paraffin: Lyn Antibody [NBP2-17188] - Human colon carcinoma, using LYN antibody at 1:250 dilution. Antigen Retrieval: Trilogy™ (EDTA based, pH 8.0) buffer, 15min



Western Blot: Lyn Antibody [NBP2-17188] - Mouse tissue extract (50 ug) was separated by 10% SDS-PAGE, and the membrane was blotted with Lyn antibody (NBP2-17188) diluted at 1:500. The HRP-conjugated anti-rabbit IgG antibody was used to detect the primary antibody.



Western Blot: Lyn Antibody [NBP2-17188] - Wild-type (WT) and CD44 knockout (KO) HeLa cell extracts (30 ug) were separated by 10% SDS-PAGE, and the membrane was blotted with LYN antibody diluted at 1:500. The HRP-conjugated anti-rabbit IgG antibody was used to detect the primary antibody.



LYN antibody immunoprecipitates LYN protein in IP experiments.

IP samples: K562 whole cell extract

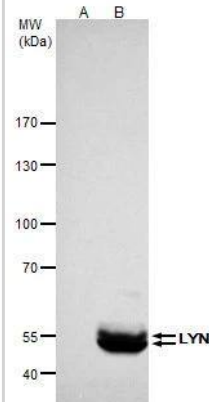
A. Control with 4 ug of preimmune Rabbit IgG

B. Immunoprecipitation of LYN protein by 4 ug LYN antibody (NBP2-17188)

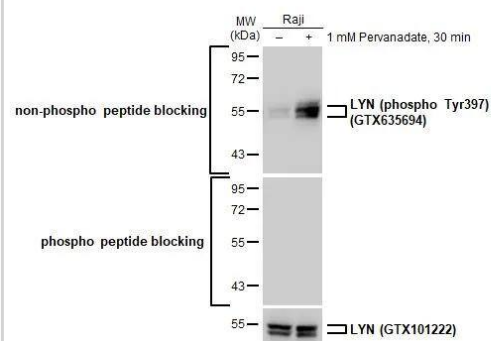
5 % SDS-PAGE

The immunoprecipitated LYN protein was detected by LYN antibody (NBP2-17188) diluted at 1:500.

[EasyBlot anti-rabbit IgG was used as a secondary reagent]

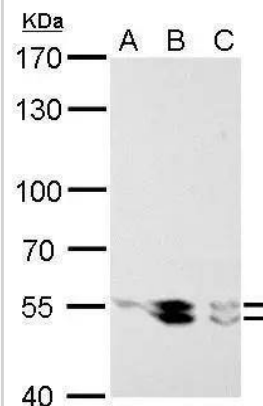


Untreated (-) and treated (+) Raji whole cell extracts (30 ug) were separated by 10% SDS-PAGE, and the membrane was blotted with LYN antibody (NBP2-17188) diluted at 1:1000. The HRP-conjugated anti-rabbit IgG antibody was used to detect the primary antibody, and the signal was developed with Trident ECL plus-Enhanced.



LYN antibody detects LYN protein by Western blot analysis.

- A. 30 ug Raji whole cell lysate/extract
 - B. 30 ug K562 whole cell lysate/extract
 - C. 30 ug Raji whole cell lysate/extract
- 7.5 % SDS-PAGE
LYN antibody (NBP2-17188) dilution: 1:1000





Novus Biologicals USA

10730 E. Briarwood Avenue
Centennial, CO 80112
USA
Phone: 303.730.1950
Toll Free: 1.888.506.6887
Fax: 303.730.1966
nb-customerservice@bio-techne.com

Bio-Techne Canada

21 Canmotor Ave
Toronto, ON M8Z 4E6
Canada
Phone: 905.827.6400
Toll Free: 855.668.8722
Fax: 905.827.6402
canada.inquires@bio-techne.com

Bio-Techne Ltd

19 Barton Lane
Abingdon Science Park
Abingdon, OX14 3NB, United Kingdom
Phone: (44) (0) 1235 529449
Free Phone: 0800 37 34 15
Fax: (44) (0) 1235 533420
info.EMEA@bio-techne.com

General Contact Information

www.novusbio.com
Technical Support: nb-technical@bio-techne.com
Orders: nb-customerservice@bio-techne.com
General: novus@novusbio.com

Products Related to NBP2-17188

NBP2-33376H	Blue Marker Antibody (6F4-F6) [HRP]
HAF008	Goat anti-Rabbit IgG Secondary Antibody [HRP]
NB7160	Goat anti-Rabbit IgG (H+L) Secondary Antibody [HRP]
NBP2-24891	Rabbit IgG Isotype Control

Limitations

This product is for research use only and is not approved for use in humans or in clinical diagnosis. Primary Antibodies are guaranteed for 1 year from date of receipt.

For more information on our 100% guarantee, please visit www.novusbio.com/guarantee

Earn gift cards/discounts by submitting a review: www.novusbio.com/reviews/submit/NBP2-17188

Earn gift cards/discounts by submitting a publication using this product:
www.novusbio.com/publications

