

Product Datasheet

HIST1H3A Antibody NBP2-16842

Unit Size: 0.1 ml

Aliquot and store at -20C or -80C. Avoid freeze-thaw cycles.

www.novusbio.com



technical@novusbio.com

Protocols, Publications, Related Products, Reviews, Research Tools and Images at:
www.novusbio.com/NBP2-16842

Updated 9/25/2025 v.20.1

Earn rewards for product
reviews and publications.

Submit a publication at www.novusbio.com/publications

Submit a review at www.novusbio.com/reviews/destination/NBP2-16842



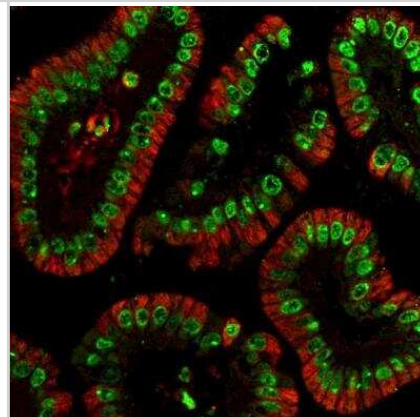
NBP2-16842

HIST1H3A Antibody

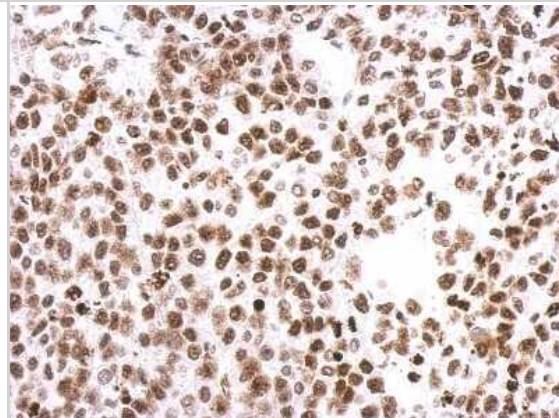
Product Information	
Unit Size	0.1 ml
Concentration	Concentrations vary lot to lot. See vial label for concentration. If unlisted please contact technical services.
Storage	Aliquot and store at -20C or -80C. Avoid freeze-thaw cycles.
Clonality	Polyclonal
Preservative	0.025% Proclin 300
Isotype	IgG
Purity	Antigen Affinity-purified
Buffer	PBS, 20% Glycerol
Target Molecular Weight	15 kDa
Product Description	
Description	Novus Biologicals Rabbit HIST1H3A Antibody (NBP2-16842) is a polyclonal antibody validated for use in IHC, WB, ICC/IF, IP and CHIP. All Novus Biologicals antibodies are covered by our 100% guarantee.
Host	Rabbit
Gene ID	8350
Gene Symbol	H3C1
Species	Human, Mouse, Rat, Porcine, Drosophila, Fungi, Plant, Monkey, Golden Syrian Hamster
Reactivity Notes	Rice (100%).
Immunogen	Carrier-protein conjugated synthetic peptide encompassing a sequence within the N-terminus region of human HIST1H3A. The exact sequence is proprietary.
Product Application Details	
Applications	Western Blot, Immunohistochemistry-Paraffin, Immunocytochemistry/ Immunofluorescence, Immunohistochemistry, Immunoprecipitation, Chromatin Immunoprecipitation (ChIP)
Recommended Dilutions	Western Blot 1:500-1:10000, Immunohistochemistry 1:100-1:1000, Immunocytochemistry/ Immunofluorescence 1:100-1:1000, Immunoprecipitation 1:100-1:500, Immunohistochemistry-Paraffin 1:100-1:1000, Chromatin Immunoprecipitation (ChIP)
Application Notes	Chip assay-Assay dependent

Images

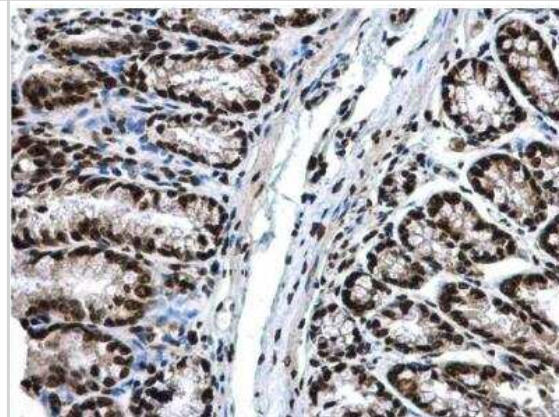
Immunohistochemistry-Paraffin: HIST1H3A Antibody [NBP2-16842] - Histone H3 antibody detects Histone H3 protein at nucleus in mouse colon by immunohistochemical analysis. Sample: Paraffin-embedded mouse colon. Green: Histone H3 antibody diluted at 1:500. Red: alpha Tubulin antibody [114] (NBP2-43837) diluted at 1:500.



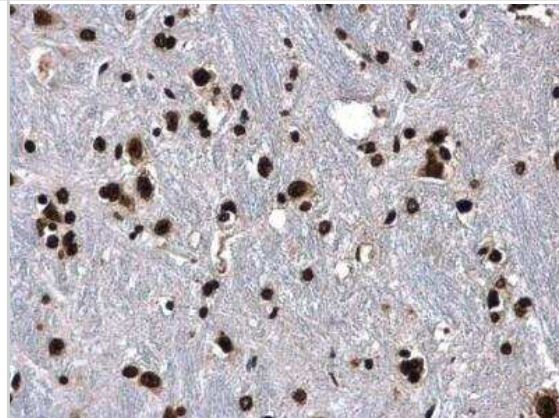
Immunohistochemistry-Paraffin: HIST1H3A Antibody [NBP2-16842] - Immunohistochemical analysis of paraffin-embedded Hela xenograft, using antibody at 1:500 dilution.



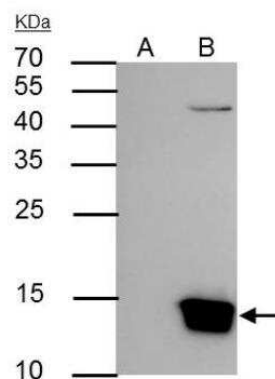
Immunohistochemistry-Paraffin: HIST1H3A Antibody [NBP2-16842] - Paraffin-embedded mouse colon. Histone H3 antibody diluted at 1:500.



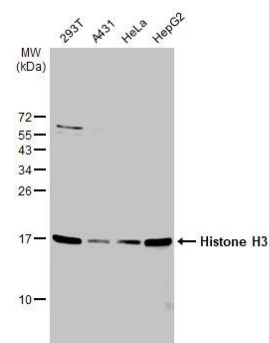
Immunohistochemistry-Paraffin: HIST1H3A Antibody [NBP2-16842] - Paraffin-embedded mouse brain. Histone H3 antibody diluted at 1:500.



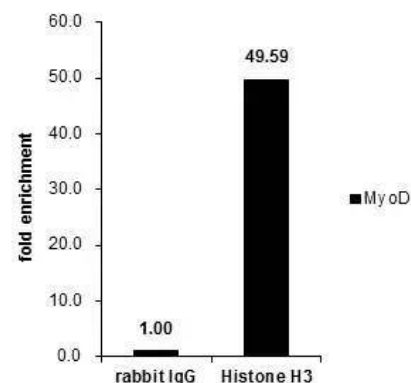
Immunoprecipitation: HIST1H3A Antibody [NBP2-16842] - IP Sample: Raji whole cell lysate/extract A : Control with 3 ug of pre-immune rabbit IgG B : Immunoprecipitation of Histone H3 by 3 ug of Histone H3 antibody 15% SDS-PAGE The immunoprecipitated Histone H3 protein was detected by Histone H3 antibody (diluted at 1 : 1000. EasyBlot anti-rabbit IgG (HRP) was used as a secondary reagent.



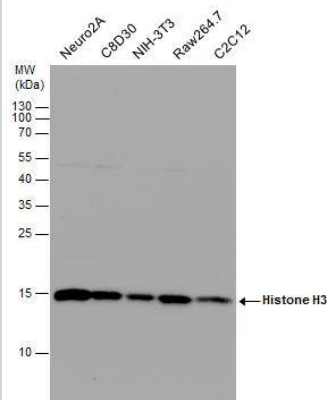
Western Blot: HIST1H3A Antibody [NBP2-16842] - Various whole cell extracts (30 ug) were separated by 15% SDS-PAGE, and the membrane was blotted with HIST1H3A antibody (NBP2-16842) diluted at 1:1000. The HRP-conjugated anti-rabbit IgG antibody was used to detect the primary antibody.



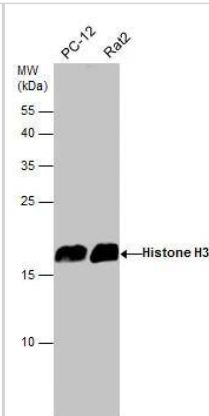
Cross-linked ChIP was performed with HeLa chromatin extract and 5 ug of either control rabbit IgG or anti-Histone H3 antibody. The precipitated DNA was detected by PCR with primer set targeting to MyoD.



Histone H3 antibody detects Histone H3 protein by western blot analysis. Various whole cell extracts (30 ug) were separated by 15% SDS-PAGE, and the membrane was blotted with Histone H3 antibody (NBP2-16842) diluted at a dilution of 1:10000. The HRP-conjugated anti-rabbit IgG antibody was used to detect the primary antibody.



Various whole cell extracts (30 ug) were separated by 15% SDS-PAGE, and the membrane was blotted with Histone H3 antibody (NBP2-16842) diluted at 1:3000. The HRP-conjugated anti-rabbit IgG antibody was used to detect the primary antibody.

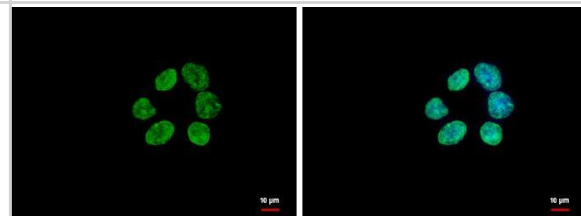


Histone H3 antibody detects Histone H3 protein at nucleus by immunofluorescent analysis.

Sample: A431 cells were fixed in ice-cold MeOH for 5 min.

Green: Histone H3 protein stained by Histone H3 antibody (NBP2-16842) diluted at 1:500.

Blue: Hoechst 33342 staining.





Novus Biologicals USA

10730 E. Briarwood Avenue
Centennial, CO 80112
USA
Phone: 303.730.1950
Toll Free: 1.888.506.6887
Fax: 303.730.1966
nb-customerservice@bio-techne.com

Bio-Techne Canada

21 Canmotor Ave
Toronto, ON M8Z 4E6
Canada
Phone: 905.827.6400
Toll Free: 855.668.8722
Fax: 905.827.6402
canada.inquires@bio-techne.com

Bio-Techne Ltd

19 Barton Lane
Abingdon Science Park
Abingdon, OX14 3NB, United Kingdom
Phone: (44) (0) 1235 529449
Free Phone: 0800 37 34 15
Fax: (44) (0) 1235 533420
info.EMEA@bio-techne.com

General Contact Information

www.novusbio.com
Technical Support: nb-technical@bio-techne.com
Orders: nb-customerservice@bio-techne.com
General: novus@novusbio.com

Products Related to NBP2-16842

NBP2-33376H	Blue Marker Antibody (6F4-F6) [HRP]
HAF008	Goat anti-Rabbit IgG Secondary Antibody [HRP]
NB7160	Goat anti-Rabbit IgG (H+L) Secondary Antibody [HRP]
NBP2-24891	Rabbit IgG Isotype Control

Limitations

This product is for research use only and is not approved for use in humans or in clinical diagnosis. Primary Antibodies are guaranteed for 1 year from date of receipt.

For more information on our 100% guarantee, please visit www.novusbio.com/guarantee

Earn gift cards/discounts by submitting a review: www.novusbio.com/reviews/submit/NBP2-16842

Earn gift cards/discounts by submitting a publication using this product:
www.novusbio.com/publications

