

Product Datasheet

HIST1H3A Antibody NBP2-16838

Unit Size: 0.1 ml

Aliquot and store at -20C or -80C. Avoid freeze-thaw cycles.

www.novusbio.com



technical@novusbio.com

Protocols, Publications, Related Products, Reviews, Research Tools and Images at:
www.novusbio.com/NBP2-16838

Updated 9/25/2025 v.20.1

Earn rewards for product
reviews and publications.

Submit a publication at www.novusbio.com/publications

Submit a review at www.novusbio.com/reviews/destination/NBP2-16838



NBP2-16838

HIST1H3A Antibody

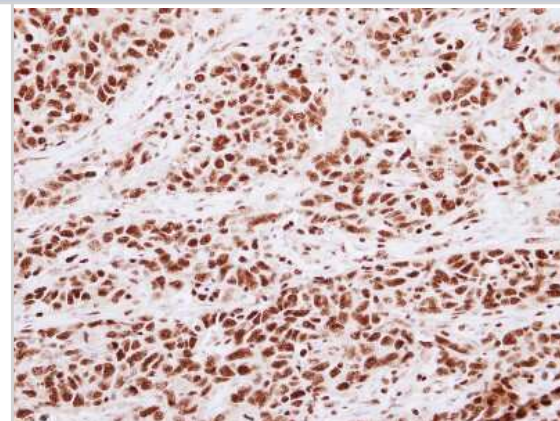
Product Information	
Unit Size	0.1 ml
Concentration	Concentrations vary lot to lot. See vial label for concentration. If unlisted please contact technical services.
Storage	Aliquot and store at -20C or -80C. Avoid freeze-thaw cycles.
Clonality	Polyclonal
Preservative	0.025% Proclin 300
Isotype	IgG
Purity	Antigen Affinity-purified
Buffer	PBS, 1% BSA, 20% Glycerol
Target Molecular Weight	15 kDa

Product Description	
Description	Novus Biologicals Rabbit HIST1H3A Antibody (NBP2-16838) is a polyclonal antibody validated for use in IHC, WB, ICC/IF, IP and CHIP. All Novus Biologicals antibodies are covered by our 100% guarantee.
Host	Rabbit
Gene ID	8350
Gene Symbol	H3C1
Species	Human
Immunogen	Carrier-protein conjugated synthetic peptide surrounding di-methyl Lys4 of human HIST1H3A. The exact sequence is proprietary.

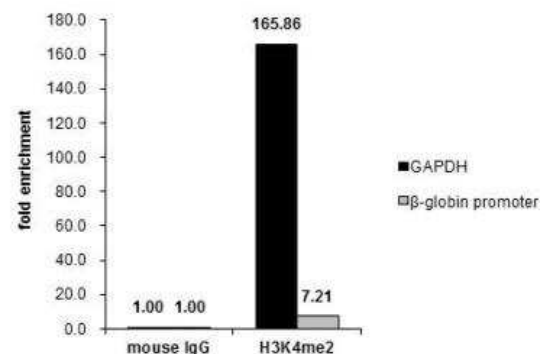
Product Application Details	
Applications	Western Blot, Immunohistochemistry-Paraffin, Immunocytochemistry/ Immunofluorescence, Immunohistochemistry, Immunoprecipitation, Chromatin Immunoprecipitation (ChIP)
Recommended Dilutions	Western Blot 1:1000-1:10000, Immunohistochemistry 10 - 1:500, Immunocytochemistry/ Immunofluorescence 1:100-1:1000, Immunoprecipitation 1:500-1:1000, Immunohistochemistry-Paraffin 1:100-1:1000, Chromatin Immunoprecipitation (ChIP)

Images

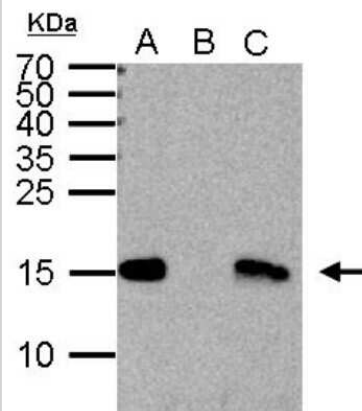
Immunohistochemistry-Paraffin: HIST1H3A Antibody [NBP2-16838] - Immunohistochemical analysis of paraffin-embedded Lung AdCA, using antibody at 1:250 dilution.



Chromatin Immunoprecipitation (ChIP): HIST1H3A Antibody [NBP2-16838] - Cross-linked ChIP was performed with HeLa chromatin extract and 5 ug of either control rabbit IgG or anti-HIST1H3A antibody. The precipitated DNA was detected by PCR with primer set targeting to GAPDH or beta-globin promoter.

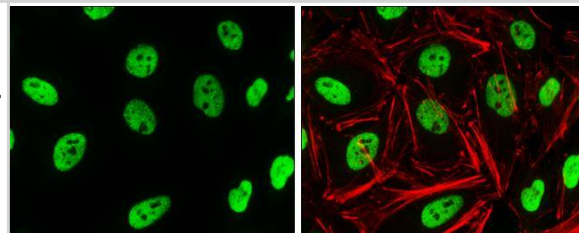


Immunoprecipitation: HIST1H3A Antibody [NBP2-16838] - Sample: 1000 ug HeLa whole cell lysate/extract A. 50 ug HeLa whole cell lysate/extract B. Control with 2 ug of preimmune rabbit IgG C. Immunoprecipitation of Histone H3 (di-methyl Lys4) protein by 2 ug of Histone H3 (di-methyl Lys4) antibody 15% SDS-PAGE The immunoprecipitated Histone H3 (di-methyl Lys4) protein was detected by Histone H3 (di-methyl Lys4) antibody diluted at 1:1000. anti-rabbit IgG was used as a secondary reagent.



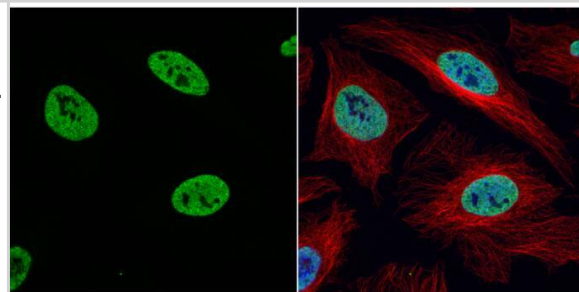
Histone H3K4me2 (dimethyl Lys4) antibody detects Histone H3K4me2 (dimethyl Lys4) protein at nucleus by immunofluorescent analysis. Sample: HeLa cells were fixed in 4% paraformaldehyde at RT for 15 min.

Green: Histone H3K4me2 (dimethyl Lys4) protein stained by Histone H3K4me2 (dimethyl Lys4) antibody (NBP2-16838) diluted at 1:1000.
Red: phalloidin, a cytoskeleton marker, diluted at 1:50.

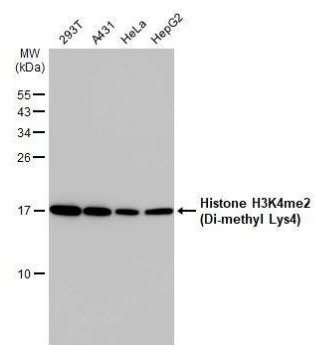


Histone H3K4me2 (dimethyl Lys4) antibody detects Histone H3K4me2 (dimethyl Lys4) protein at nucleus by immunofluorescent analysis. Sample: HeLa cells were fixed in 4% paraformaldehyde at RT for 15 min.

Green: Histone H3K4me2 (dimethyl Lys4) protein stained by Histone H3K4me2 (dimethyl Lys4) antibody (NBP2-16838) diluted at 1:1000.
Red: alpha Tubulin, a cytoskeleton marker, stained by alpha Tubulin antibody [GT114] diluted at 1:1000.
Blue: Hoechst 33342 staining.



Various whole cell extracts (30 ug) were separated by 15% SDS-PAGE, and the membrane was blotted with Histone H3K4me2 (Di-methyl Lys4) antibody (NBP2-16838) diluted at 1:2500. The HRP-conjugated anti-rabbit IgG antibody was used to detect the primary antibody.





Novus Biologicals USA

10730 E. Briarwood Avenue
Centennial, CO 80112
USA
Phone: 303.730.1950
Toll Free: 1.888.506.6887
Fax: 303.730.1966
nb-customerservice@bio-techne.com

Bio-Techne Canada

21 Canmotor Ave
Toronto, ON M8Z 4E6
Canada
Phone: 905.827.6400
Toll Free: 855.668.8722
Fax: 905.827.6402
canada.inquires@bio-techne.com

Bio-Techne Ltd

19 Barton Lane
Abingdon Science Park
Abingdon, OX14 3NB, United Kingdom
Phone: (44) (0) 1235 529449
Free Phone: 0800 37 34 15
Fax: (44) (0) 1235 533420
info.EMEA@bio-techne.com

General Contact Information

www.novusbio.com
Technical Support: nb-technical@bio-techne.com
Orders: nb-customerservice@bio-techne.com
General: novus@novusbio.com

Products Related to NBP2-16838

NBP2-33376H	Blue Marker Antibody (6F4-F6) [HRP]
HAF008	Goat anti-Rabbit IgG Secondary Antibody [HRP]
NB7160	Goat anti-Rabbit IgG (H+L) Secondary Antibody [HRP]
NBP2-24891	Rabbit IgG Isotype Control

Limitations

This product is for research use only and is not approved for use in humans or in clinical diagnosis. Primary Antibodies are guaranteed for 1 year from date of receipt.

For more information on our 100% guarantee, please visit www.novusbio.com/guarantee

Earn gift cards/discounts by submitting a review: www.novusbio.com/reviews/submit/NBP2-16838

Earn gift cards/discounts by submitting a publication using this product:
www.novusbio.com/publications

