

Product Datasheet

Glutathione S-Transferase pi 1/GSTP1 Antibody - BSA Free NBP2-16756

Unit Size: 0.1 ml

Aliquot and store at -20C or -80C. Avoid freeze-thaw cycles.

www.novusbio.com



technical@novusbio.com

Reviews: 1 Publications: 2

Protocols, Publications, Related Products, Reviews, Research Tools and Images at:
www.novusbio.com/NBP2-16756

Updated 9/25/2025 v.20.1

**Earn rewards for product
reviews and publications.**

Submit a publication at www.novusbio.com/publications

Submit a review at www.novusbio.com/reviews/destination/NBP2-16756

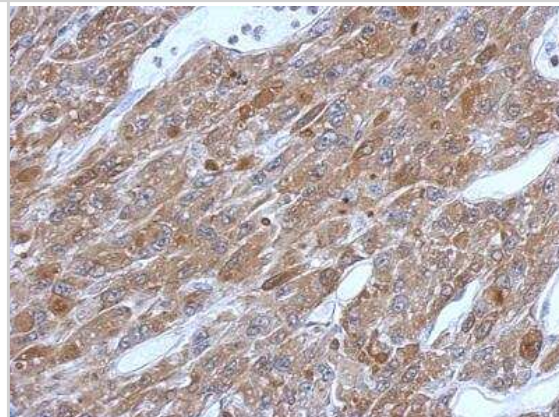


NBP2-16756**Glutathione S-Transferase pi 1/GSTP1 Antibody - BSA Free**

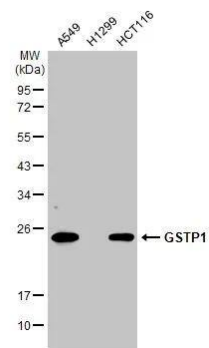
Product Information	
Unit Size	0.1 ml
Concentration	Concentrations vary lot to lot. See vial label for concentration. If unlisted please contact technical services.
Storage	Aliquot and store at -20C or -80C. Avoid freeze-thaw cycles.
Clonality	Polyclonal
Preservative	0.025% Proclin 300
Isotype	IgG
Purity	Antigen Affinity-purified
Buffer	PBS, 20% Glycerol
Target Molecular Weight	23 kDa
Product Description	
Description	Novus Biologicals Rabbit Glutathione S-Transferase pi 1/GSTP1 Antibody - BSA Free (NBP2-16756) is a polyclonal antibody validated for use in IHC, WB and ICC/IF. Anti-Glutathione S-Transferase pi 1/GSTP1 Antibody: Cited in 2 publications. All Novus Biologicals antibodies are covered by our 100% guarantee.
Host	Rabbit
Gene ID	2950
Gene Symbol	GSTP1
Species	Human, Mouse, Rat
Reactivity Notes	Immunogen displays the following percentage of sequence identity for non-tested species: Canine (86%), Bovine (85%).
Immunogen	Recombinant protein encompassing a sequence within the center region of human Glutathione S-Transferase pi 1/GSTP1. The exact sequence is proprietary.
Product Application Details	
Applications	Western Blot, Immunohistochemistry-Paraffin, Immunocytochemistry/Immunofluorescence, Immunohistochemistry, Immunohistochemistry-Frozen
Recommended Dilutions	Western Blot 1:500-1:10000, Immunohistochemistry 1:100-1:1000, Immunocytochemistry/ Immunofluorescence 1:100-1:1000, Immunohistochemistry-Paraffin 1:100-1:1000, Immunohistochemistry-Frozen Assay dependent

Images

Immunohistochemistry-Paraffin: Glutathione S-Transferase pi 1/GSTP1 Antibody [NBP2-16756] - U87 xenograft, using GSTP1 antibody at 1:500 dilution. Antigen Retrieval: Trilogy™ (EDTA based, pH 8.0) buffer, 15min.



Various whole cell extracts (30 ug) were separated by 12% SDS-PAGE, and the membrane was blotted with GSTP1 antibody (NBP2-16756) diluted at 1:5000. The HRP-conjugated anti-rabbit IgG antibody was used to detect the primary antibody.



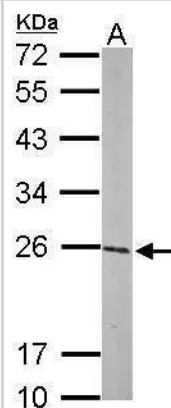
Sample (50 ug of whole cell lysate)

A: mouse brain

12% SDS PAGE

NBP2-16756 diluted at 1:1000

The HRP-conjugated anti-rabbit IgG antibody was used to detect the primary antibody.

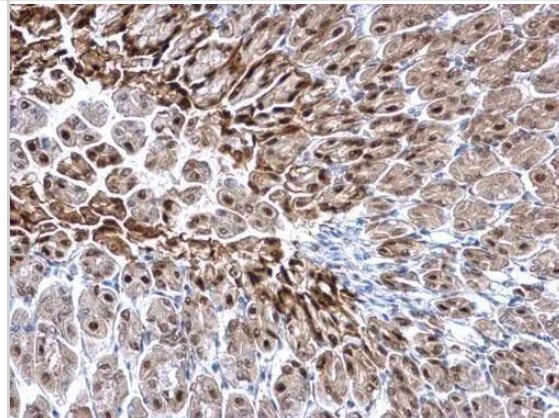


GSTP1 antibody detects GSTP1 protein at nucleus on mouse brain stem by immunohistochemical analysis.

Sample: Paraffin-embedded mouse brain stem.

GSTP1 antibody (NBP2-16756) dilution: 1:500.

Antigen Retrieval: Trilogy(TM) (EDTA based, pH 8.0) buffer, 15min

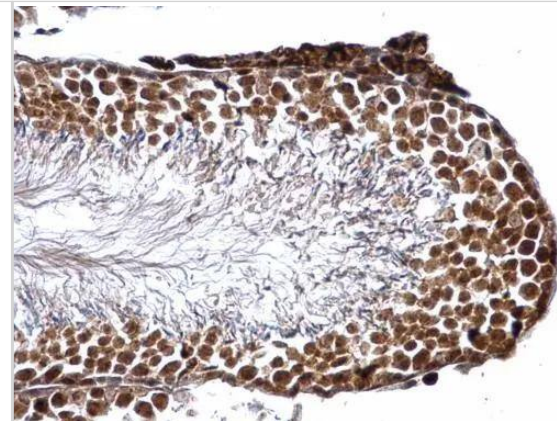


GSTP1 antibody detects GSTP1 protein at nucleus on mouse testis by immunohistochemical analysis.

Sample: Paraffin-embedded mouse testis.

GSTP1 antibody (NBP2-16756) dilution: 1:500.

Antigen Retrieval: Trilogy(TM) (EDTA based, pH 8.0) buffer, 15min

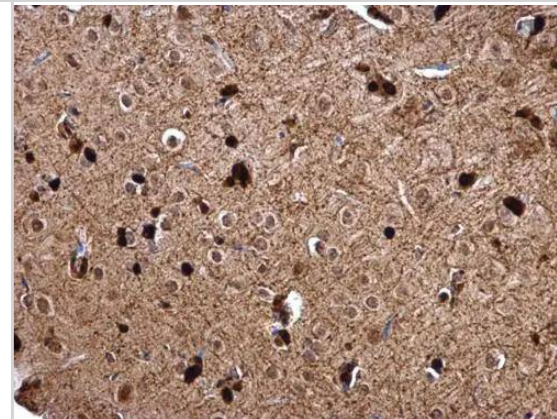


GSTP1 antibody detects GSTP1 protein at nucleus on rat fore brain by immunohistochemical analysis.

Sample: Paraffin-embedded rat fore brain.

GSTP1 antibody (NBP2-16756) dilution: 1:500.

Antigen Retrieval: Trilogy(TM) (EDTA based, pH 8.0) buffer, 15min



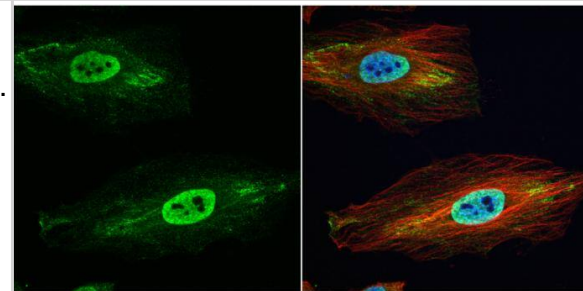
GSTP1 antibody detects GSTP1 protein at cytoplasm and nucleus by immunofluorescent analysis.

Sample: HeLa cells were fixed in 4% paraformaldehyde at RT for 15 min.

Green: GSTP1 protein stained by GSTP1 antibody (NBP2-16756) diluted at 1:500.

Red: alpha Tubulin, a cytoskeleton marker, stained by alpha Tubulin antibody [GT114] diluted at 1:1000.

Blue: Hoechst 33342 staining.

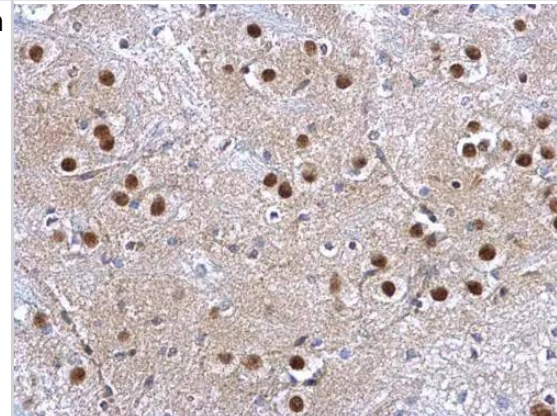


GSTP1 antibody detects GSTP1 protein at nucleus on mouse brain stem by immunohistochemical analysis.

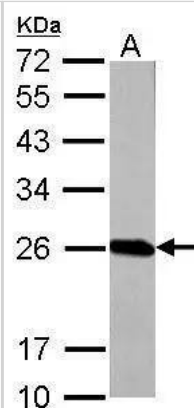
Sample: Paraffin-embedded mouse brain stem.

GSTP1 antibody (NBP2-16756) dilution: 1:500.

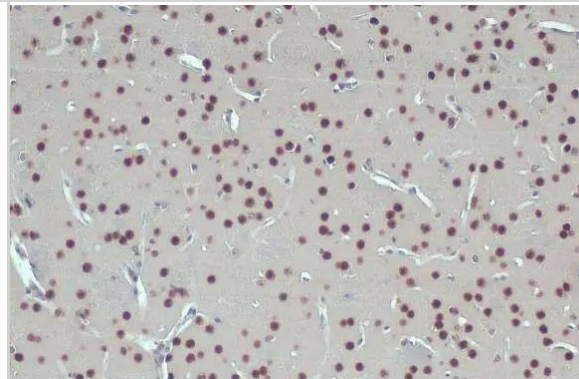
Antigen Retrieval: Trilogy(TM) (EDTA based, pH 8.0) buffer, 15min



GSTP1 antibody detects GSTP1 protein by western blot analysis.
 A. 50 ug Rat brain lysate/extract
 12% SDS-PAGE
 GSTP1 antibody (NBP2-16756) dilution: 1:1000
 The HRP-conjugated anti-rabbit IgG antibody was used to detect the primary antibody.



GSTP1 antibody detects GSTP1 protein at cytoplasm and nucleus by immunohistochemical analysis. Sample: Paraffin-embedded mouse brain. GSTP1 stained by GSTP1 antibody (NBP2-16756) diluted at 1:500. Antigen Retrieval: Citrate buffer, pH 6.0, 15 min



Publications

Roglans N, Baena M, Sangüesa G et al. Chronic liquid fructose supplementation does not cause liver tumorigenesis but elicits clear sex differences in the metabolic response in Sprague-Dawley rats Food & Nutrition Research 2021-09-22 [PMID: 34650394] (Western Blot)

Herrera-López EE, Guerrero-Escalera D, Aguirre-Maldonado I et al. Annexins A2 and A5 are potential early biomarkers of hepatocarcinogenesis Scientific reports 2023-04-28 [PMID: 37117324] (WB, Rat)



Novus Biologicals USA

10730 E. Briarwood Avenue
Centennial, CO 80112
USA
Phone: 303.730.1950
Toll Free: 1.888.506.6887
Fax: 303.730.1966
nb-customerservice@bio-techne.com

Bio-Techne Canada

21 Canmotor Ave
Toronto, ON M8Z 4E6
Canada
Phone: 905.827.6400
Toll Free: 855.668.8722
Fax: 905.827.6402
canada.inquires@bio-techne.com

Bio-Techne Ltd

19 Barton Lane
Abingdon Science Park
Abingdon, OX14 3NB, United Kingdom
Phone: (44) (0) 1235 529449
Free Phone: 0800 37 34 15
Fax: (44) (0) 1235 533420
info.EMEA@bio-techne.com

General Contact Information

www.novusbio.com
Technical Support: nb-technical@bio-techne.com
Orders: nb-customerservice@bio-techne.com
General: novus@novusbio.com

Products Related to NBP2-16756

NBP2-33376H	Blue Marker Antibody (6F4-F6) [HRP]
HAF008	Goat anti-Rabbit IgG Secondary Antibody [HRP]
NB7160	Goat anti-Rabbit IgG (H+L) Secondary Antibody [HRP]
NBP2-24891	Rabbit IgG Isotype Control

Limitations

This product is for research use only and is not approved for use in humans or in clinical diagnosis. Primary Antibodies are guaranteed for 1 year from date of receipt.

For more information on our 100% guarantee, please visit www.novusbio.com/guarantee

Earn gift cards/discounts by submitting a review: www.novusbio.com/reviews/submit/NBP2-16756

Earn gift cards/discounts by submitting a publication using this product:
www.novusbio.com/publications

