

Product Datasheet

Glutamate Dehydrogenase Antibody NBP2-16679

Unit Size: 0.1 ml

Aliquot and store at -20C or -80C. Avoid freeze-thaw cycles.

www.novusbio.com



technical@novusbio.com

Publications: 4

Protocols, Publications, Related Products, Reviews, Research Tools and Images at:
www.novusbio.com/NBP2-16679

Updated 9/25/2025 v.20.1

Earn rewards for product
reviews and publications.

Submit a publication at www.novusbio.com/publications

Submit a review at www.novusbio.com/reviews/destination/NBP2-16679



NBP2-16679

Glutamate Dehydrogenase Antibody

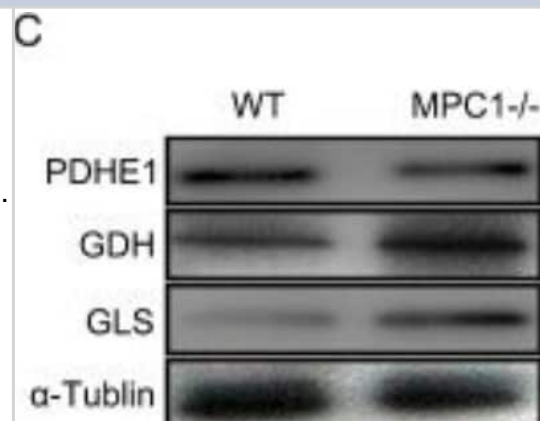
Product Information	
Unit Size	0.1 ml
Concentration	Concentrations vary lot to lot. See vial label for concentration. If unlisted please contact technical services.
Storage	Aliquot and store at -20C or -80C. Avoid freeze-thaw cycles.
Clonality	Polyclonal
Preservative	0.025% Proclin 300
Isotype	IgG
Purity	Antigen Affinity-purified
Buffer	PBS, 1% BSA, 20% Glycerol
Target Molecular Weight	61 kDa

Product Description	
Description	Novus Biologicals Rabbit Glutamate Dehydrogenase Antibody (NBP2-16679) is a polyclonal antibody validated for use in IHC, WB, ELISA and ICC/IF. Anti-Glutamate Dehydrogenase Antibody: Cited in 4 publications. All Novus Biologicals antibodies are covered by our 100% guarantee.
Host	Rabbit
Gene ID	2746
Gene Symbol	GLUD1
Species	Human, Mouse, Rat, Drosophila
Reactivity Notes	Xenopus laevis (91%).
Marker	Mitochondria Marker
Immunogen	Recombinant protein encompassing a sequence within the center region of human Glutamate Dehydrogenase. The exact sequence is proprietary.

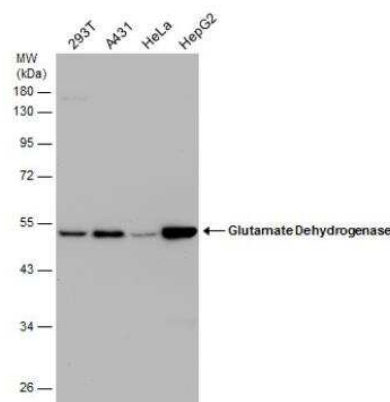
Product Application Details	
Applications	Western Blot, Immunohistochemistry-Paraffin, ELISA, Immunocytochemistry/Immunofluorescence, Immunohistochemistry
Recommended Dilutions	Western Blot 1:500-1:3000, ELISA Assay dependent, Immunohistochemistry 1:100-1:1000, Immunocytochemistry/Immunofluorescence 1:100-1:1000, Immunohistochemistry-Paraffin 1:100-1:1000

Images

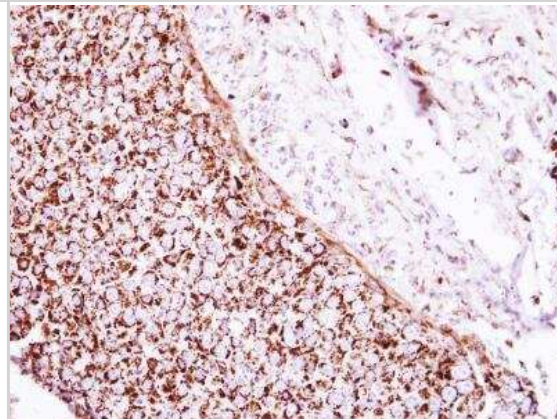
Western Blot: Glutamate Dehydrogenase Antibody [NBP2-16679] - Metabolic alterations in the MPC1^{-/-} cells expressed significantly higher levels glutaminolysis related proteins GDH (Glutamate Dehydrogenase) and GLS (NBP2-29940), but there was no significant change in the PDHE1 protein expression in these cells as shown in representative western blots. The alpha-Tubulin was used as loading control. ***P<0.001. Data were expressed as mean +/- SEM. Three replicated experiments were carried out with the similar results. Image collected and cropped by CiteAb from the following publication (www.oncotarget.com/lookup/doi/10.18632/oncotarget.18199) licensed under a CC-BY license.



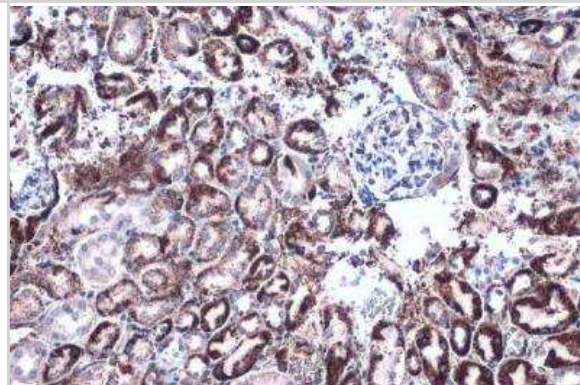
Western Blot: Glutamate Dehydrogenase Antibody [NBP2-16679] - Various whole cell extracts (30 ug) were separated by 10% SDS-PAGE, and the membrane was blotted with Glutamate Dehydrogenase antibody diluted at 1:1000.



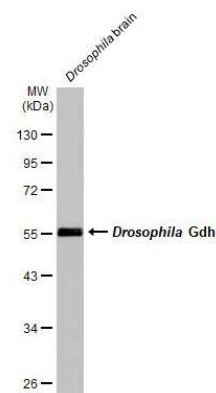
Immunohistochemistry-Paraffin: Glutamate Dehydrogenase Antibody [NBP2-16679] - Human breast cancer, using Glutamate Dehydrogenase antibody at 1:250 dilution. Antigen Retrieval: Trilogy™ (EDTA based, pH 8.0) buffer, 15min.



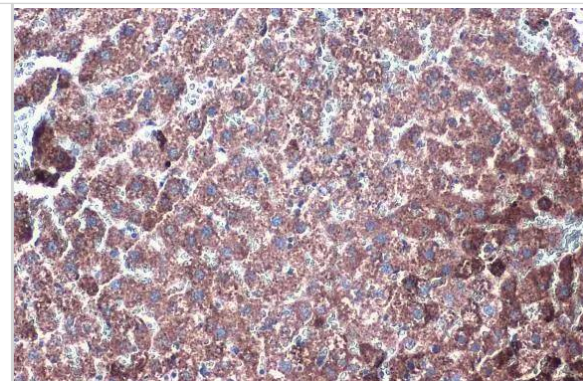
Immunohistochemistry-Paraffin: Glutamate Dehydrogenase Antibody [NBP2-16679] - Mouse kidney. Glutamate Dehydrogenase stained by Glutamate Dehydrogenase antibody diluted at 1:500. Antigen Retrieval: Citrate buffer, pH 6.0, 15 min.



Western Blot: Glutamate Dehydrogenase Antibody [NBP2-16679] - Drosophila tissue extract (50 ug) was separated by 10% SDS-PAGE, and the membrane was blotted with GLUD1+ GLUD2 antibody diluted at 1:1000. The HRP-conjugated anti-rabbit IgG antibody (NBP2-19301) was used to detect the primary antibody.



GLUD1 + GLUD2 antibody detects Glutamate Dehydrogenase protein at mitochondria by immunohistochemical analysis. Sample: Paraffin-embedded rat liver. Glutamate Dehydrogenase stained by GLUD1 + GLUD2 antibody (NBP2-16679) diluted at 1:500. Antigen Retrieval: Citrate buffer, pH 6.0, 15 min



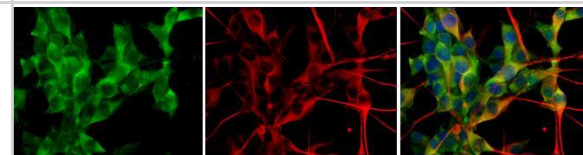
GLUD1 + GLUD2 antibody detects Glutamate Dehydrogenase protein at cytoplasm by immunofluorescent analysis.

Sample: U-87 MG cells were fixed in 4% paraformaldehyde at RT for 15 min.

Green: Glutamate Dehydrogenase protein stained by GLUD1 + GLUD2 antibody (NBP2-16679) diluted at 1:500.

Red: beta Tubulin 3/ TUJ1 protein stained by beta Tubulin 3/ TUJ1 antibody diluted at 1:200.

Blue: Hoechst 33342 staining.

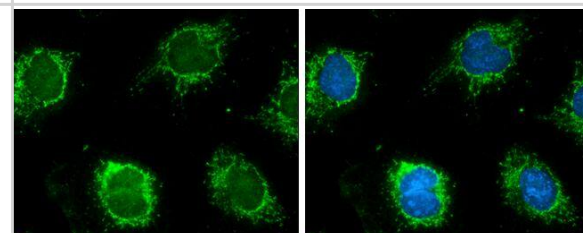


GLUD1+ GLUD2 antibody detects Glutamate Dehydrogenase protein at mitochondria by immunofluorescent analysis.

Sample: HeLa cells were fixed in ice-cold MeOH for 5 min.

Green: Glutamate Dehydrogenase protein stained by GLUD1 + GLUD2 antibody (NBP2-16679) diluted at 1:500.

Blue: Hoechst 33342 staining.



Publications

Chang HW, Lee M, Lee YS et al. p53-dependent glutamine usage determines susceptibility to oxidative stress in radioresistant head and neck cancer cells *Cell Signal* 2020-10-30 [PMID: 33137455] (WB)

Li X, Han G, Li X et al. Mitochondrial pyruvate carrier function determines cell stemness and metabolic reprogramming in cancer cells *Oncotarget* 2017-07-11 [PMID: 28624784] (WB, Mouse)

Rueda EM, Johnson JE, Giddabasappa A et al. The cellular and compartmental profile of mouse retinal glycolysis, tricarboxylic acid cycle, oxidative phosphorylation, and ~P transferring kinases. *Mol. Vis.* 2016-08-08 [PMID: 27499608] (ICC/IF, Mouse)

Chaumeil MM, Larson PE, Woods SM et al. Hyperpolarized [1-13C] glutamate: a metabolic imaging biomarker of IDH1 mutational status in glioma. *Cancer Res.* 2014-05-29 [PMID: 24876103] (WB, Human)



Novus Biologicals USA

10730 E. Briarwood Avenue
Centennial, CO 80112
USA
Phone: 303.730.1950
Toll Free: 1.888.506.6887
Fax: 303.730.1966
nb-customerservice@bio-techne.com

Bio-Techne Canada

21 Canmotor Ave
Toronto, ON M8Z 4E6
Canada
Phone: 905.827.6400
Toll Free: 855.668.8722
Fax: 905.827.6402
canada.inquires@bio-techne.com

Bio-Techne Ltd

19 Barton Lane
Abingdon Science Park
Abingdon, OX14 3NB, United Kingdom
Phone: (44) (0) 1235 529449
Free Phone: 0800 37 34 15
Fax: (44) (0) 1235 533420
info.EMEA@bio-techne.com

General Contact Information

www.novusbio.com
Technical Support: nb-technical@bio-techne.com
Orders: nb-customerservice@bio-techne.com
General: novus@novusbio.com

Products Related to NBP2-16679

NBP2-33376H	Blue Marker Antibody (6F4-F6) [HRP]
HAF008	Goat anti-Rabbit IgG Secondary Antibody [HRP]
NB7160	Goat anti-Rabbit IgG (H+L) Secondary Antibody [HRP]
NBP2-24891	Rabbit IgG Isotype Control

Limitations

This product is for research use only and is not approved for use in humans or in clinical diagnosis. Primary Antibodies are guaranteed for 1 year from date of receipt.

For more information on our 100% guarantee, please visit www.novusbio.com/guarantee

Earn gift cards/discounts by submitting a review: www.novusbio.com/reviews/submit/NBP2-16679

Earn gift cards/discounts by submitting a publication using this product:
www.novusbio.com/publications

