

Product Datasheet

FDPS Antibody - BSA Free NBP2-16463

Unit Size: 0.1 ml

Aliquot and store at -20C or -80C. Avoid freeze-thaw cycles.

www.novusbio.com



technical@novusbio.com

Reviews: 1

Protocols, Publications, Related Products, Reviews, Research Tools and Images at:
www.novusbio.com/NBP2-16463

Updated 2/19/2026 v.20.1

**Earn rewards for product
reviews and publications.**

Submit a publication at www.novusbio.com/publications

Submit a review at www.novusbio.com/reviews/destination/NBP2-16463



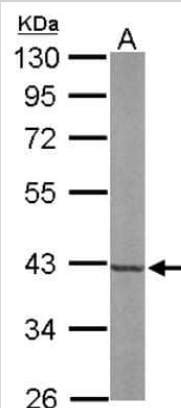
NBP2-16463

FDPS Antibody - BSA Free

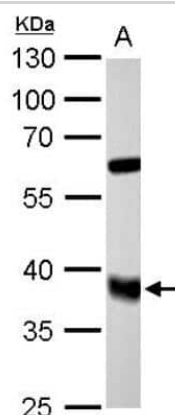
Product Information	
Unit Size	0.1 ml
Concentration	Concentrations vary lot to lot. See vial label for concentration. If unlisted please contact technical services.
Storage	Aliquot and store at -20C or -80C. Avoid freeze-thaw cycles.
Clonality	Polyclonal
Preservative	0.025% Proclin 300
Isotype	IgG
Purity	Antigen Affinity-purified
Buffer	PBS, 20% Glycerol
Target Molecular Weight	48 kDa
Product Description	
Description	Novus Biologicals Rabbit FDPS Antibody - BSA Free (NBP2-16463) is a polyclonal antibody validated for use in IHC, WB, ICC/IF and Simple Western. All Novus Biologicals antibodies are covered by our 100% guarantee.
Host	Rabbit
Gene ID	2224
Gene Symbol	FDPS
Species	Human, Mouse, Rat
Reactivity Notes	Porcine (89%).
Immunogen	Recombinant protein encompassing a sequence within the center region of human FDPS. The exact sequence is proprietary.
Product Application Details	
Applications	Western Blot, Simple Western, Immunohistochemistry-Paraffin, Immunocytochemistry/ Immunofluorescence, Immunohistochemistry
Recommended Dilutions	Western Blot 1:500-1:3000, Simple Western Validated from a verified customer review, Immunohistochemistry 1:100 - 1:1000, Immunocytochemistry/ Immunofluorescence 1:100 - 1:1000, Immunohistochemistry-Paraffin 1:100 - 1:1000
Application Notes	See Simple Western Antibody Database for Simple Western validation: Tested in SVG-A whole cell lysate, separated by Size, antibody dilution of 1:25

Images

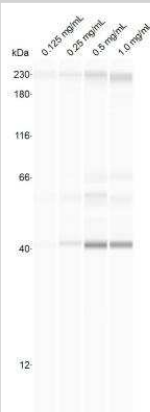
Western Blot: FDPS Antibody [NBP2-16463] - Sample (50 ug of whole cell lysate) A: Mouse Brain, 10% SDS PAGE gel, diluted at 1:3000.



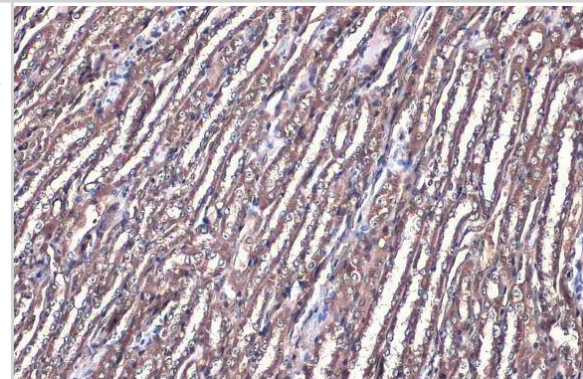
Western Blot: FDPS Antibody [NBP2-16463] - A. 50 ug rat liver lysate/extract 10% SDS-PAGE FDPS antibody dilution: 1:5000 The HRP-conjugated anti-rabbit IgG antibody (NBP2-19301) was used to detect the primary antibody.



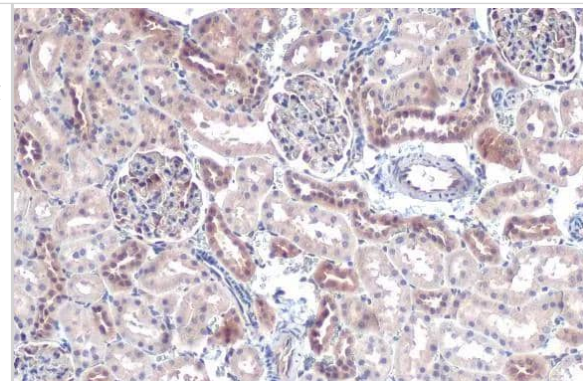
Simple Western: FDPS Antibody [NBP2-16463] - SVG-A whole cell lysate. Antibody at 1:25. Image from verified customer review.



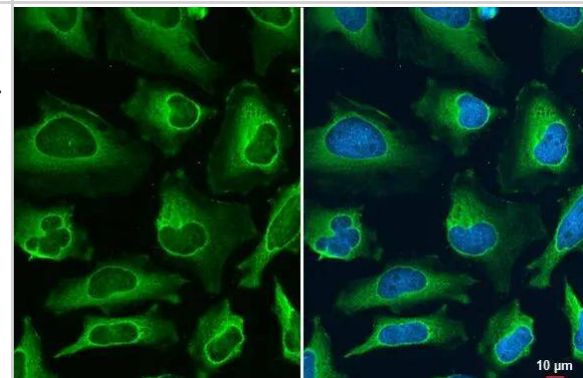
FDPS antibody [N1C3] detects FDPS protein at cytoplasm by immunohistochemical analysis. Sample: Paraffin-embedded mouse kidney. FDPS stained by FDPS antibody [N1C3] (NBP2-16463) diluted at 1:500. Antigen Retrieval: Citrate buffer, pH 6.0, 15 min



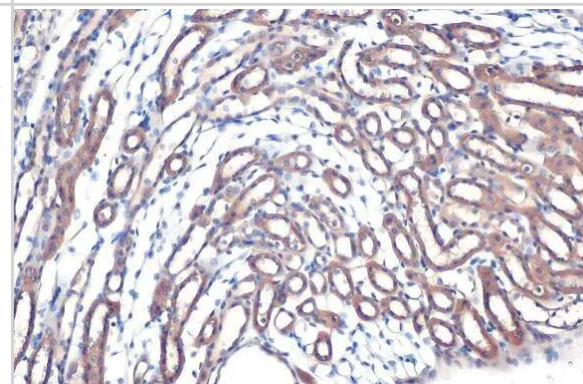
FDPS antibody [N1C3] detects FDPS protein at cytoplasm by immunohistochemical analysis. Sample: Paraffin-embedded rat kidney. FDPS stained by FDPS antibody [N1C3] (NBP2-16463) diluted at 1:500. Antigen Retrieval: Citrate buffer, pH 6.0, 15 min



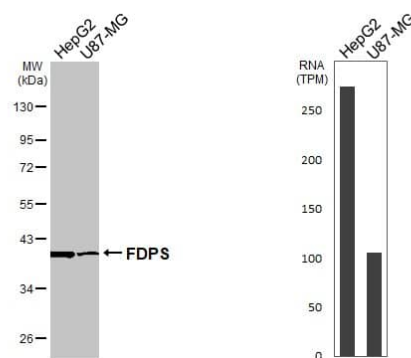
FDPS antibody [N1C3] detects FDPS protein at cytoplasm by immunofluorescent analysis. Sample: HeLa cells were fixed in ice-cold MeOH for 5 min. Green: FDPS stained by FDPS antibody [N1C3] (NBP2-16463) diluted at 1:500.



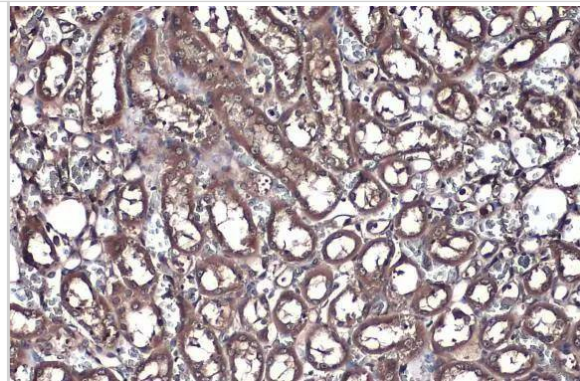
FDPS antibody [N1C3] detects FDPS protein at cytoplasm by immunohistochemical analysis. Sample: Paraffin-embedded mouse kidney. FDPS stained by FDPS antibody [N1C3] (NBP2-16463) diluted at 1:500. Antigen Retrieval: Citrate buffer, pH 6.0, 15 min



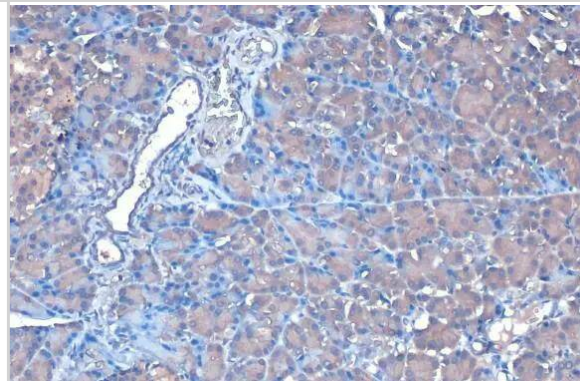
Various whole cell extracts (30 ug) were separated by 10% SDS-PAGE, and the membrane was blotted with FDPS antibody [N1C3] (NBP2-16463) diluted at 1:3000. The HRP-conjugated anti-rabbit IgG antibody was used to detect the primary antibody. Corresponding RNA expression data for the same cell lines are based on Human Protein Atlas program.



FDPS antibody [N1C3] detects FDPS protein at cytoplasm by immunohistochemical analysis. Sample: Paraffin-embedded rat kidney. FDPS stained by FDPS antibody [N1C3] (NBP2-16463) diluted at 1:500. Antigen Retrieval: Citrate buffer, pH 6.0, 15 min



FDPS antibody [N1C3] detects secreted FDPS protein by immunohistochemical analysis. Sample: Paraffin-embedded rat pancreas. FDPS stained by FDPS antibody [N1C3] (NBP2-16463) diluted at 1:500. Antigen Retrieval: Citrate buffer, pH 6.0, 15 min





Novus Biologicals USA

10730 E. Briarwood Avenue
Centennial, CO 80112
USA
Phone: 303.730.1950
Toll Free: 1.888.506.6887
Fax: 303.730.1966
nb-customerservice@bio-techne.com

Bio-Techne Canada

21 Canmotor Ave
Toronto, ON M8Z 4E6
Canada
Phone: 905.827.6400
Toll Free: 855.668.8722
Fax: 905.827.6402
canada.inquires@bio-techne.com

Bio-Techne Ltd

19 Barton Lane
Abingdon Science Park
Abingdon, OX14 3NB, United Kingdom
Phone: (44) (0) 1235 529449
Free Phone: 0800 37 34 15
Fax: (44) (0) 1235 533420
info.EMEA@bio-techne.com

General Contact Information

www.novusbio.com
Technical Support: nb-technical@bio-techne.com
Orders: nb-customerservice@bio-techne.com
General: novus@novusbio.com

Products Related to NBP2-16463

NBP2-33376H	Blue Marker Antibody (6F4-F6) [HRP]
HAF008	Goat anti-Rabbit IgG Secondary Antibody [HRP]
NB7160	Goat anti-Rabbit IgG (H+L) Secondary Antibody [HRP]
NBP2-24891	Rabbit IgG Isotype Control

Limitations

This product is for research use only and is not approved for use in humans or in clinical diagnosis. Primary Antibodies are guaranteed for 1 year from date of receipt.

For more information on our 100% guarantee, please visit www.novusbio.com/guarantee

Earn gift cards/discounts by submitting a review: www.novusbio.com/reviews/submit/NBP2-16463

Earn gift cards/discounts by submitting a publication using this product:
www.novusbio.com/publications

