

Product Datasheet

Enolase 1 Antibody NBP2-16337

Unit Size: 0.1 ml

Aliquot and store at -20C or -80C. Avoid freeze-thaw cycles.

www.novusbio.com



technical@novusbio.com

Protocols, Publications, Related Products, Reviews, Research Tools and Images at:
www.novusbio.com/NBP2-16337

Updated 9/25/2025 v.20.1

Earn rewards for product
reviews and publications.

Submit a publication at www.novusbio.com/publications

Submit a review at www.novusbio.com/reviews/destination/NBP2-16337



NBP2-16337

Enolase 1 Antibody

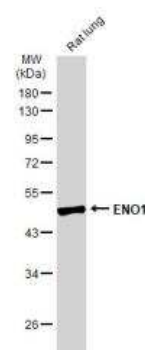
| Product Information | |
|-------------------------|------------------------------------------------------------------------------------------------------------------|
| Unit Size | 0.1 ml |
| Concentration | Concentrations vary lot to lot. See vial label for concentration. If unlisted please contact technical services. |
| Storage | Aliquot and store at -20C or -80C. Avoid freeze-thaw cycles. |
| Clonality | Polyclonal |
| Preservative | 0.025% Proclin 300 |
| Isotype | IgG |
| Purity | Antigen Affinity-purified |
| Buffer | PBS, 20% Glycerol |
| Target Molecular Weight | 47 kDa |

| Product Description | |
|---------------------|----------------------------------------------------------------------------------------------------------------------------------------------------------------------------------------------------|
| Description | Novus Biologicals Rabbit Enolase 1 Antibody (NBP2-16337) is a polyclonal antibody validated for use in IHC, WB, ICC/IF and IP. All Novus Biologicals antibodies are covered by our 100% guarantee. |
| Host | Rabbit |
| Gene ID | 2023 |
| Gene Symbol | ENO1 |
| Species | Human, Mouse, Rat |
| Reactivity Notes | Chimpanzee (100%), Xenopus laevis (92%). |
| Immunogen | Recombinant protein encompassing a sequence within the center region of human Enolase 1. The exact sequence is proprietary. |

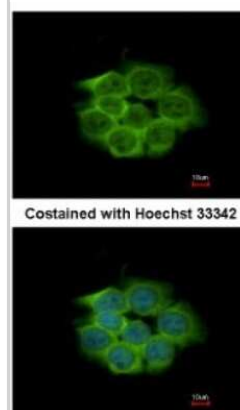
| Product Application Details | |
|-----------------------------|----------------------------------------------------------------------------------------------------------------------------------------------------------------------------------------------------|
| Applications | Western Blot, Immunohistochemistry-Paraffin, Immunocytochemistry/Immunofluorescence, Immunohistochemistry, Immunoprecipitation |
| Recommended Dilutions | Western Blot 1:5000-1:20000, Immunohistochemistry 1:100-1:1000, Immunocytochemistry/ Immunofluorescence 1:100-1:1000, Immunoprecipitation 1:500-1:1000, Immunohistochemistry-Paraffin 1:100-1:1000 |

Images

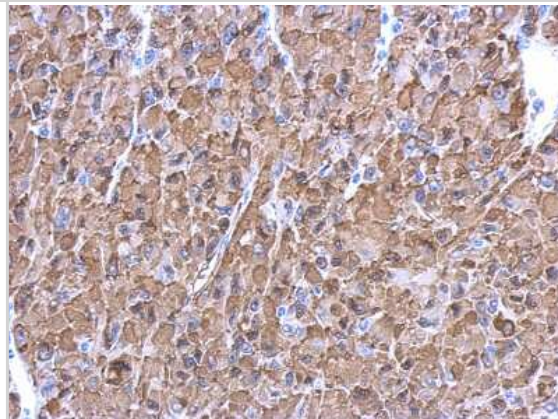
Western Blot: Enolase 1 Antibody [NBP2-16337] - Rat tissue extract (50 ug) was separated by 10% SDS-PAGE, and the membrane was blotted with Enolase 1 antibody diluted at 1:1000. HRP-conjugated anti-rabbit IgG antibody was used to detect the primary antibody.



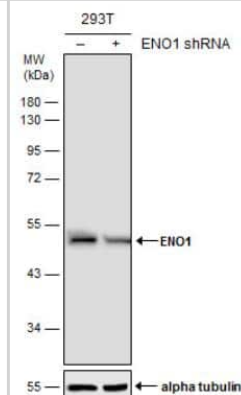
Immunocytochemistry/Immunofluorescence: Enolase 1 Antibody [NBP2-16337] - Immunofluorescence analysis of methanol-fixed HCT116, using antibody at 1:500 dilution.



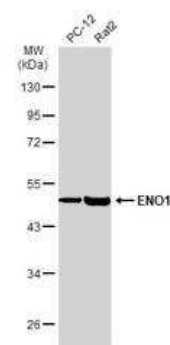
Immunohistochemistry-Paraffin: Enolase 1 Antibody [NBP2-16337] - Immunohistochemical analysis of paraffin-embedded U87 xenograft, using antibody at 1:500 dilution.



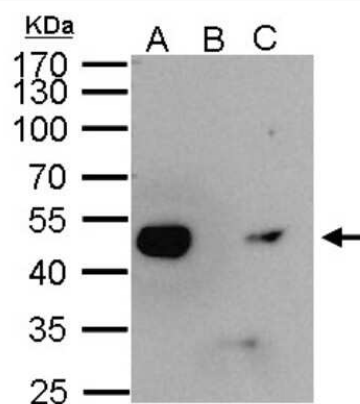
Western Blot: Enolase 1 Antibody [NBP2-16337] - Non-transfected (-) and transfected (+) 293T whole cell extracts (30 ug) were separated by 10% SDS-PAGE, and the membrane was blotted with ENO1 antibody.



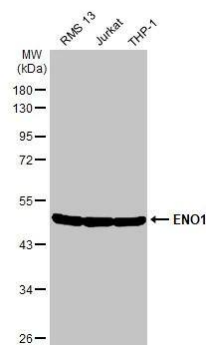
Western Blot: Enolase 1 Antibody [NBP2-16337] - Various whole cell extracts (30 ug) were separated by 10% SDS-PAGE, and the membrane was blotted with Enolase 1 antibody diluted at 1:1000. HRP-conjugated anti-rabbit IgG antibody was used to detect the primary antibody.



Immunoprecipitation: Enolase 1 Antibody [NBP2-16337] - Sample: 1000 ug HeLa whole cell lysate/extract A. 40 ug HeLa whole cell lysate/extract B. Control with 2.5 ug of preimmune rabbit IgG C. Immunoprecipitation of ENO1 protein by 2.5 ug of ENO1 antibody 10% SDS-PAGE The immunoprecipitated ENO1 protein was detected by ENO1 antibody diluted at 1:1000. anti-rabbit IgG was used as a secondary reagent.



Various whole cell extracts (30 ug) were separated by 10% SDS-PAGE, and the membrane was blotted with ENO1 antibody (NBP2-16337) diluted at 1:3000. The HRP-conjugated anti-rabbit IgG antibody was used to detect the primary antibody.





Novus Biologicals USA

10730 E. Briarwood Avenue
Centennial, CO 80112
USA
Phone: 303.730.1950
Toll Free: 1.888.506.6887
Fax: 303.730.1966
nb-customerservice@bio-techne.com

Bio-Techne Canada

21 Canmotor Ave
Toronto, ON M8Z 4E6
Canada
Phone: 905.827.6400
Toll Free: 855.668.8722
Fax: 905.827.6402
canada.inquires@bio-techne.com

Bio-Techne Ltd

19 Barton Lane
Abingdon Science Park
Abingdon, OX14 3NB, United Kingdom
Phone: (44) (0) 1235 529449
Free Phone: 0800 37 34 15
Fax: (44) (0) 1235 533420
info.EMEA@bio-techne.com

General Contact Information

www.novusbio.com
Technical Support: nb-technical@bio-techne.com
Orders: nb-customerservice@bio-techne.com
General: novus@novusbio.com

Products Related to NBP2-16337

| | |
|-------------|-----------------------------------------------------|
| NBP2-33376H | Blue Marker Antibody (6F4-F6) [HRP] |
| HAF008 | Goat anti-Rabbit IgG Secondary Antibody [HRP] |
| NB7160 | Goat anti-Rabbit IgG (H+L) Secondary Antibody [HRP] |
| NBP2-24891 | Rabbit IgG Isotype Control |

Limitations

This product is for research use only and is not approved for use in humans or in clinical diagnosis. Primary Antibodies are guaranteed for 1 year from date of receipt.

For more information on our 100% guarantee, please visit www.novusbio.com/guarantee

Earn gift cards/discounts by submitting a review: www.novusbio.com/reviews/submit/NBP2-16337

Earn gift cards/discounts by submitting a publication using this product:
www.novusbio.com/publications

