

Product Datasheet

ECHS1 Antibody - BSA Free NBP2-16263

Unit Size: 0.1 ml

Aliquot and store at -20C or -80C. Avoid freeze-thaw cycles.

www.novusbio.com



technical@novusbio.com

Protocols, Publications, Related Products, Reviews, Research Tools and Images at:
www.novusbio.com/NBP2-16263

Updated 9/25/2025 v.20.1

Earn rewards for product
reviews and publications.

Submit a publication at www.novusbio.com/publications

Submit a review at www.novusbio.com/reviews/destination/NBP2-16263



NBP2-16263

ECHS1 Antibody - BSA Free

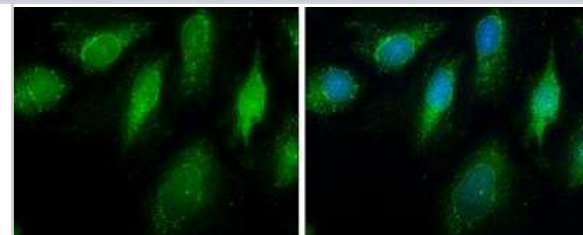
| Product Information | |
|--------------------------------|------------------------------------------------------------------------------------------------------------------|
| Unit Size | 0.1 ml |
| Concentration | Concentrations vary lot to lot. See vial label for concentration. If unlisted please contact technical services. |
| Storage | Aliquot and store at -20C or -80C. Avoid freeze-thaw cycles. |
| Clonality | Polyclonal |
| Preservative | 0.025% Proclin 300 |
| Isotype | IgG |
| Purity | Antigen Affinity-purified |
| Buffer | PBS, 20% Glycerol |
| Target Molecular Weight | 31 kDa |

| Product Description | |
|-------------------------|-----------------------------------------------------------------------------------------------------------------------------------------------------------------------------------------------------------|
| Description | Novus Biologicals Rabbit ECHS1 Antibody - BSA Free (NBP2-16263) is a polyclonal antibody validated for use in IHC, WB, ICC/IF and IP. All Novus Biologicals antibodies are covered by our 100% guarantee. |
| Host | Rabbit |
| Gene ID | 1892 |
| Gene Symbol | ECHS1 |
| Species | Human, Mouse |
| Reactivity Notes | Immunogen displays the following percentage of sequence identity for non-tested species: Porcine (81%), Rat (85%), Bovine (82%). |
| Immunogen | Recombinant protein encompassing a sequence within the center region of human ECHS1. The exact sequence is proprietary. |

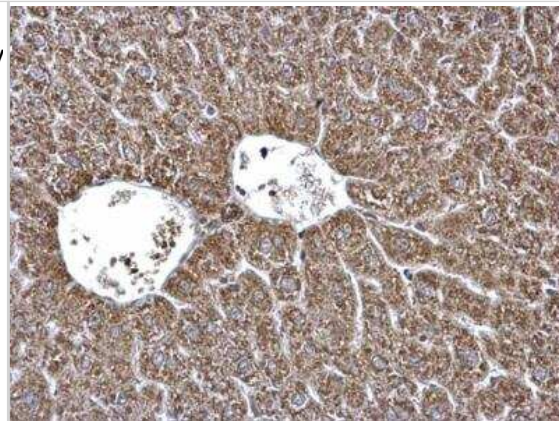
| Product Application Details | |
|------------------------------|------------------------------------------------------------------------------------------------------------------------------------------------------------------------------------------------|
| Applications | Western Blot, Immunohistochemistry-Paraffin, Immunocytochemistry/Immunofluorescence, Immunohistochemistry, Immunoprecipitation |
| Recommended Dilutions | Western Blot 1:500-1:10000, Immunohistochemistry 10 - 1:500, Immunocytochemistry/ Immunofluorescence 1:100-1:1000, Immunoprecipitation 1:100-1:500, Immunohistochemistry-Paraffin 1:100-1:1000 |

Images

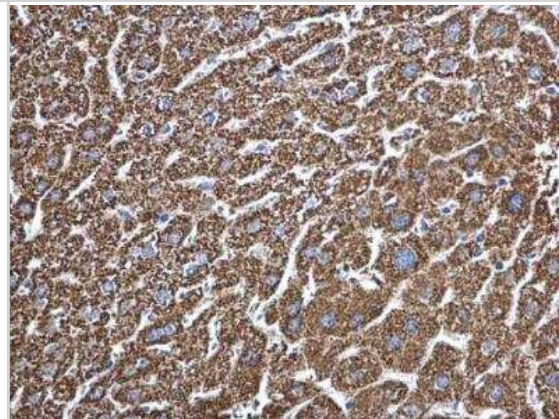
Immunocytochemistry/Immunofluorescence: ECHS1 Antibody [NBP2-16263] - ECHS1 antibody detects ECHS1 protein at mitochondria by immunofluorescent analysis. Sample: HeLa cells were fixed in ice-cold MeOH for 5 min. Green: ECHS1 protein stained by ECHS1 antibody diluted at 1:500. Blue: Hoechst 33342 staining.



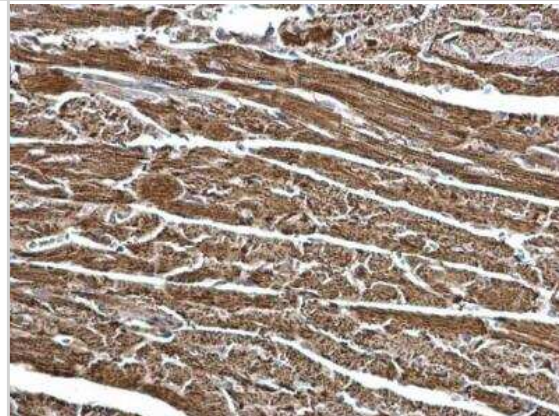
Immunohistochemistry-Paraffin: ECHS1 Antibody [NBP2-16263] - ECHS1 antibody detects ECHS1 protein at mitochondria on mouse ovary by immunohistochemical analysis. Sample: Paraffin-embedded mouse liver. ECHS1 antibody dilution: 1:500.



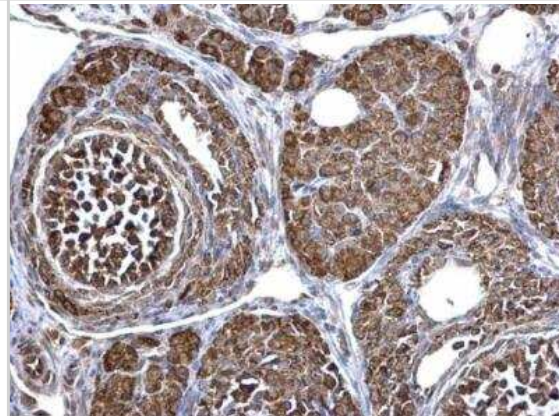
Immunohistochemistry-Paraffin: ECHS1 Antibody [NBP2-16263] - ECHS1 antibody detects ECHS1 protein at mitochondria on mouse heart by immunohistochemical analysis. Sample: Paraffin-embedded mouse heart. ECHS1 antibody dilution: 1:500.



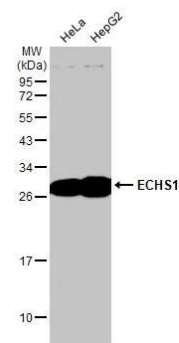
Immunohistochemistry-Paraffin: ECHS1 Antibody [NBP2-16263] - ECHS1 antibody detects ECHS1 protein at mitochondria on mouse heart by immunohistochemical analysis. Sample: Paraffin-embedded mouse heart. ECHS1 antibody dilution: 1:500.



Immunohistochemistry-Paraffin: ECHS1 Antibody [NBP2-16263] - ECHS1 antibody detects ECHS1 protein at mitochondria on mouse liver by immunohistochemical analysis. Sample: Paraffin-embedded mouse ovary. ECHS1 antibody dilution: 1:500.



Western Blot: ECHS1 Antibody [NBP2-16263] - Various whole cell extracts (30 ug) were separated by 12% SDS-PAGE, and the membrane was blotted with ECHS1 antibody [N1C2] (NBP2-16263) diluted at 1:500. The HRP-conjugated anti-rabbit IgG antibody was used to detect the primary antibody.

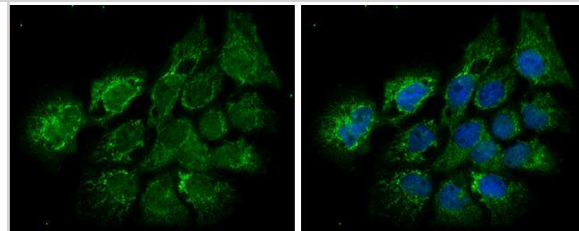


ECHS1 antibody [N1C2] detects ECHS1 protein at mitochondria by immunofluorescent analysis.

Sample: A431 cells were fixed in 2% paraformaldehyde/culture medium at RT for 30 min.

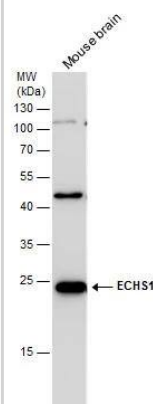
Green: ECHS1 protein stained by ECHS1 antibody [N1C2] (NBP2-16263) diluted at 1:200.

Blue: Hoechst 33342 staining.



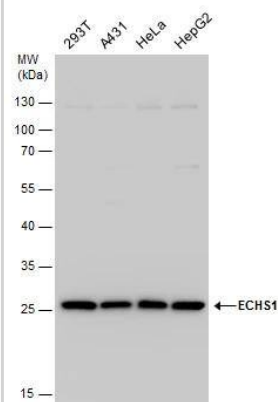
ECHS1 antibody detects ECHS1 protein by Western blot analysis.

Mouse tissue extracts (50 ug) was separated by 12 % SDS-PAGE, and the membrane was blotted with ECHS1 antibody (NBP2-16263) diluted by 1:5000.



ECHS1 antibody detects ECHS1 protein by Western blot analysis.

Various whole cell extracts (30 ug) were separated by 12% SDS-PAGE, and the membrane was blotted with ECHS1 antibody (NBP2-16263) diluted by 1:5000.





Novus Biologicals USA

10730 E. Briarwood Avenue
Centennial, CO 80112
USA
Phone: 303.730.1950
Toll Free: 1.888.506.6887
Fax: 303.730.1966
nb-customerservice@bio-techne.com

Bio-Techne Canada

21 Canmotor Ave
Toronto, ON M8Z 4E6
Canada
Phone: 905.827.6400
Toll Free: 855.668.8722
Fax: 905.827.6402
canada.inquires@bio-techne.com

Bio-Techne Ltd

19 Barton Lane
Abingdon Science Park
Abingdon, OX14 3NB, United Kingdom
Phone: (44) (0) 1235 529449
Free Phone: 0800 37 34 15
Fax: (44) (0) 1235 533420
info.EMEA@bio-techne.com

General Contact Information

www.novusbio.com
Technical Support: nb-technical@bio-techne.com
Orders: nb-customerservice@bio-techne.com
General: novus@novusbio.com

Products Related to NBP2-16263

| | |
|-------------|-----------------------------------------------------|
| NBP2-33376H | Blue Marker Antibody (6F4-F6) [HRP] |
| HAF008 | Goat anti-Rabbit IgG Secondary Antibody [HRP] |
| NB7160 | Goat anti-Rabbit IgG (H+L) Secondary Antibody [HRP] |
| NBP2-24891 | Rabbit IgG Isotype Control |

Limitations

This product is for research use only and is not approved for use in humans or in clinical diagnosis. Primary Antibodies are guaranteed for 1 year from date of receipt.

For more information on our 100% guarantee, please visit www.novusbio.com/guarantee

Earn gift cards/discounts by submitting a review: www.novusbio.com/reviews/submit/NBP2-16263

Earn gift cards/discounts by submitting a publication using this product:
www.novusbio.com/publications

