

# Product Datasheet

## DCP2 Antibody - BSA Free NBP2-16109

Unit Size: 0.1 ml

Aliquot and store at -20C or -80C. Avoid freeze-thaw cycles.

[www.novusbio.com](http://www.novusbio.com)



[technical@novusbio.com](mailto:technical@novusbio.com)

### Publications: 3

Protocols, Publications, Related Products, Reviews, Research Tools and Images at:  
[www.novusbio.com/NBP2-16109](http://www.novusbio.com/NBP2-16109)

Updated 9/25/2025 v.20.1

Earn rewards for product  
reviews and publications.

Submit a publication at [www.novusbio.com/publications](http://www.novusbio.com/publications)

Submit a review at [www.novusbio.com/reviews/destination/NBP2-16109](http://www.novusbio.com/reviews/destination/NBP2-16109)



**NBP2-16109**

DCP2 Antibody - BSA Free

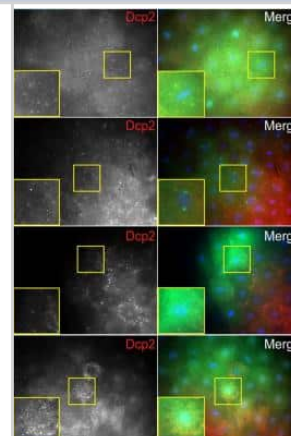
Product Information	
<b>Unit Size</b>	0.1 ml
<b>Concentration</b>	Concentrations vary lot to lot. See vial label for concentration. If unlisted please contact technical services.
<b>Storage</b>	Aliquot and store at -20C or -80C. Avoid freeze-thaw cycles.
<b>Clonality</b>	Polyclonal
<b>Preservative</b>	0.01% Thimerosal
<b>Isotype</b>	IgG
<b>Purity</b>	Antigen Affinity-purified
<b>Buffer</b>	0.1M Tris, 0.1M Glycine, 20% Glycerol
<b>Target Molecular Weight</b>	48 kDa

Product Description	
<b>Description</b>	Novus Biologicals Rabbit DCP2 Antibody - BSA Free (NBP2-16109) is a polyclonal antibody validated for use in IHC, WB and ICC/IF. Anti-DCP2 Antibody: Cited in 3 publications. All Novus Biologicals antibodies are covered by our 100% guarantee.
<b>Host</b>	Rabbit
<b>Gene ID</b>	167227
<b>Gene Symbol</b>	DCP2
<b>Species</b>	Human, Mouse, Drosophila, Zebrafish
<b>Reactivity Notes</b>	Immunogen displays the following percentage of sequence identity for non-tested species: <i>Xenopus laevis</i> (86%).
<b>Immunogen</b>	Recombinant protein encompassing a sequence within the center region of human DCP2. The exact sequence is proprietary.

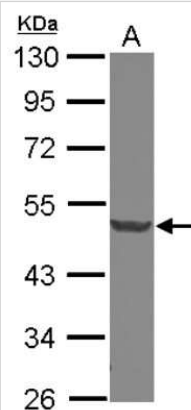
Product Application Details	
<b>Applications</b>	Western Blot, Immunohistochemistry-Paraffin, Immunocytochemistry/Immunofluorescence, Immunohistochemistry, In-situ Hybridization
<b>Recommended Dilutions</b>	Western Blot 1:500-1:3000, Immunohistochemistry 1:100-1:1000, Immunocytochemistry/ Immunofluorescence Reported in scientific literature (PMID: 29975683), Immunohistochemistry-Paraffin 1:100-1:1000, In-situ Hybridization Reported in scientific literature (PMID: 27489304)

**Images**

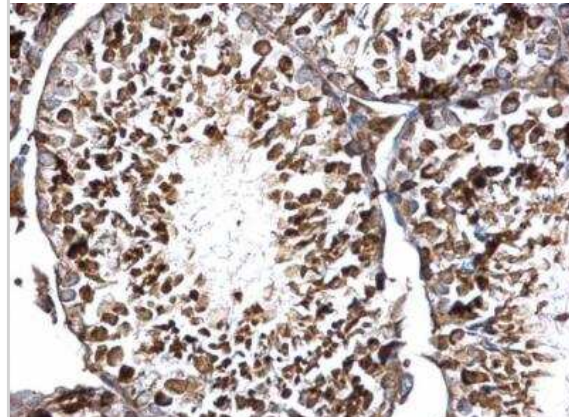
Immunocytochemistry/Immunofluorescence: DCP2 Antibody [NBP2-16109] - Zebrafish blastula cells expressing GFP-Rbpms2 fusions. Wild-type GFP-Rbpms2b localizes near the nucleus (top row), is apparently associated with the centrosome/spindle in some cells. (Top row) A subset of GFP-Rbpms2b positive granules are positive for the p-body marker Dcp2. (Second row) GFP-Rbpms2bsa9329 localization to the centrosome/spindle but not granules. (Third row) GFP-Rbpms2bae32 and (Final row) GFP-Rbpms2aae30 localization. Insets show magnified views of the highlighted cells. Images are representative slices from Z-stacks of sphere stage embryos viewed from the animal pole. Image collected and cropped by CiteAb from the following publication ([dx.plos.org/10.1371/journal.pgen.1007489](https://doi.org/10.1371/journal.pgen.1007489)) licensed under a CC-BY license.



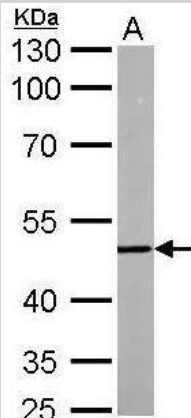
Western Blot: DCP2 Antibody [NBP2-16109] - Sample (30 ug of whole cell lysate) A: IMR32 10% SDS PAGE gel, diluted at 1:1000.



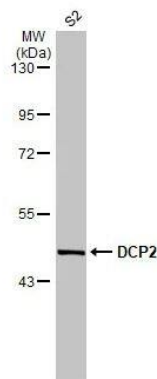
Immunohistochemistry-Paraffin: DCP2 Antibody [NBP2-16109] - Mouse testis. DCP2 antibody dilution: 1:500. Antigen Retrieval: Trilogy™ (EDTA based, pH 8.0) buffer, 15min.



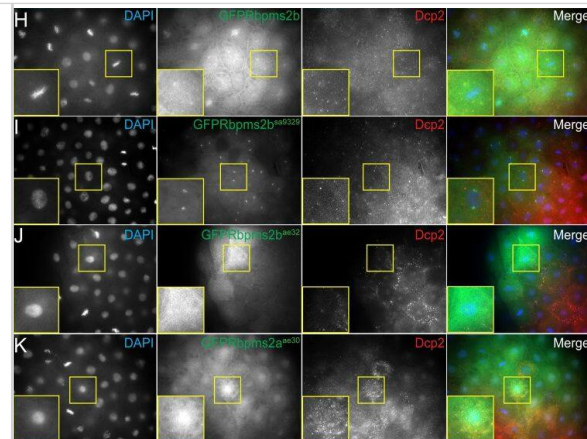
Western Blot: DCP2 Antibody [NBP2-16109] -A. 30 µg 24hr whole zebrafish lysate/extract 10 % SDS-PAGE DCP2 antibody dilution: 1:500



Western Blot: DCP2 Antibody [NBP2-16109] -Whole cell extract (30 ug) was separated by 7.5% SDS-PAGE, and the membrane was blotted with DCP2 antibody diluted at 1:1000. The HRP-conjugated anti-rabbit IgG antibody (NBP2-19301) was used to detect the primary antibody.



Immunocytochemistry/ Immunofluorescence: DCP2 Antibody [NBP2-16109] - rbpms2 mutant allele stability & localization activity in somatic cells. (A) RT-PCR to detect rbpms2a & rbpms2b maternal transcripts. Pink asterisks indicate likely nonsense mediated decay of mutant allele transcripts. (B-F) Wild-type GFP-Rbpms2a/b (B, D) & GFP-Rbpms2bsa9329 (F) localize to granules in HEK 293 cells, while GFP-Rbpms2aae30 & GFP-Rbpms2bae32 are not localized. (G-K) Zebrafish blastula cells expressing GFP-Rbpms2 fusions. (G,H) Wild-type GFP-Rbpms2b localizes near the nucleus (H), is apparently associated with the centrosome/spindle in some cells, & (G) is in granules that are not positive for the stress granule marker Tial-1. (H) A subset of GFP-Rbpms2b positive granules are positive for the p-body marker Dcp2 (open arrowheads). (I) GFP-Rbpms2bsa9329 localization to the centrosome/spindle but not granules. (J) GFP-Rbpms2bae32 & (K) GFP-Rbpms2aae30 localization. Insets show magnified views of the highlighted cells. Images are representative slices from Z-stacks of sphere stage embryos viewed from the animal pole. Image collected & cropped by CiteAb from the following publication (<https://pubmed.ncbi.nlm.nih.gov/29975683>), licensed under a CC-BY license. Not internally tested by Novus Biologicals.



## Publications

Laura Lorenzo-Orts, Marcus Strobl, Benjamin Steinmetz, Friederike Leesch, Carina Pribitzer, Josef Roehsner, Michael Schutzbier, Gerhard Dürnberger, Andrea Pauli eIF4E1b is a non-canonical eIF4E protecting maternal dormant mRNAs. EMBO reports 2024-01-24 [PMID: 38177902]

kaufman OH, Lee k, Martin M et al. rbpms2 functions in Balbiani body architecture and ovary fate. PLoS Genet. 2018-07-01 [PMID: 29975683] (ICC/IF, Zebrafish)

Zampedri C, Tinoco-Cuellar M, Carrillo-Rosas S et al. Zebrafish P54 RNA helicases are cytoplasmic granules residents that are required for development and stress resilience. Biol Open. 2016-08-03 [PMID: 27489304] (ISH, Zebrafish)



### **Novus Biologicals USA**

10730 E. Briarwood Avenue  
Centennial, CO 80112  
USA  
Phone: 303.730.1950  
Toll Free: 1.888.506.6887  
Fax: 303.730.1966  
nb-customerservice@bio-techne.com

### **Bio-Techne Canada**

21 Canmotor Ave  
Toronto, ON M8Z 4E6  
Canada  
Phone: 905.827.6400  
Toll Free: 855.668.8722  
Fax: 905.827.6402  
canada.inquires@bio-techne.com

### **Bio-Techne Ltd**

19 Barton Lane  
Abingdon Science Park  
Abingdon, OX14 3NB, United Kingdom  
Phone: (44) (0) 1235 529449  
Free Phone: 0800 37 34 15  
Fax: (44) (0) 1235 533420  
info.EMEA@bio-techne.com

### **General Contact Information**

www.novusbio.com  
Technical Support: nb-technical@bio-techne.com  
Orders: nb-customerservice@bio-techne.com  
General: novus@novusbio.com

### **Products Related to NBP2-16109**

---

NBP2-33376H	Blue Marker Antibody (6F4-F6) [HRP]
HAF008	Goat anti-Rabbit IgG Secondary Antibody [HRP]
NB7160	Goat anti-Rabbit IgG (H+L) Secondary Antibody [HRP]
NBP2-24891	Rabbit IgG Isotype Control

---

### **Limitations**

This product is for research use only and is not approved for use in humans or in clinical diagnosis. Primary Antibodies are guaranteed for 1 year from date of receipt.

For more information on our 100% guarantee, please visit [www.novusbio.com/guarantee](http://www.novusbio.com/guarantee)

Earn gift cards/discounts by submitting a review: [www.novusbio.com/reviews/submit/NBP2-16109](http://www.novusbio.com/reviews/submit/NBP2-16109)

Earn gift cards/discounts by submitting a publication using this product:  
[www.novusbio.com/publications](http://www.novusbio.com/publications)

