

Product Datasheet

Cyclin D1 Antibody - BSA Free NBP2-16054

Unit Size: 0.1 ml

Aliquot and store at -20C or -80C. Avoid freeze-thaw cycles.

www.novusbio.com



technical@novusbio.com

Publications: 1

Protocols, Publications, Related Products, Reviews, Research Tools and Images at:
www.novusbio.com/NBP2-16054

Updated 9/25/2025 v.20.1

Earn rewards for product
reviews and publications.

Submit a publication at www.novusbio.com/publications

Submit a review at www.novusbio.com/reviews/destination/NBP2-16054



NBP2-16054

Cyclin D1 Antibody - BSA Free

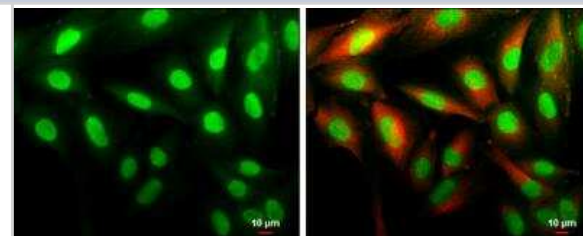
Product Information	
Unit Size	0.1 ml
Concentration	Concentrations vary lot to lot. See vial label for concentration. If unlisted please contact technical services.
Storage	Aliquot and store at -20C or -80C. Avoid freeze-thaw cycles.
Clonality	Polyclonal
Preservative	0.01% Thimerosal
Isotype	IgG
Purity	Antigen Affinity-purified
Buffer	PBS, 20% Glycerol
Target Molecular Weight	34 kDa

Product Description	
Description	Novus Biologicals Knockout (KO) Validated Rabbit Cyclin D1 Antibody - BSA Free (NBP2-16054) is a polyclonal antibody validated for use in WB, ELISA, ICC/IF and IP. Anti-Cyclin D1 Antibody: Cited in 1 publication. All Novus Biologicals antibodies are covered by our 100% guarantee.
Host	Rabbit
Gene ID	595
Gene Symbol	CCND1
Species	Human, Rat, Canine, Feline
Reactivity Notes	Chicken (86%), Xenopus laevis (80%).
Immunogen	Full length human Cyclin D1 Recombinant protein.

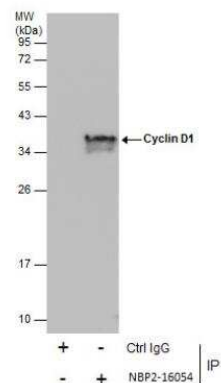
Product Application Details	
Applications	Western Blot, ELISA, Immunocytochemistry/ Immunofluorescence, Immunoprecipitation, Sandwich ELISA, Knockout Validated
Recommended Dilutions	Western Blot 1:500-1:3000, ELISA 1:1000-1:10000, Immunocytochemistry/ Immunofluorescence 1:100-1:1000, Immunoprecipitation 1:100-1:500, Sandwich ELISA, Knockout Validated

Images

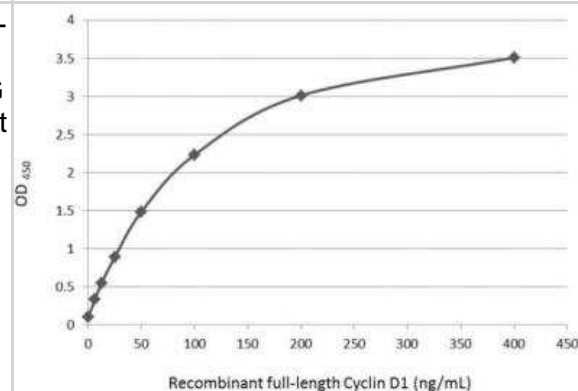
Immunocytochemistry/Immunofluorescence: Cyclin D1 Antibody [NBP2-16054] - SK-N-SH cells were fixed in 4% paraformaldehyde at RT for 15 min. Green: Cyclin D1 protein stained by Cyclin D1 antibody [N1C3] diluted at 1:500. Red: beta Tubulin 3/ Tuj1, a cytoskeleton marker, stained by beta Tubulin 3/ Tuj1 antibody [11710] diluted at 1:500. Scale bar = 10 um.



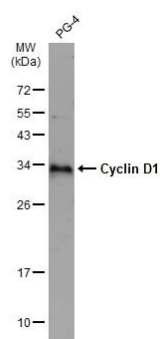
Immunoprecipitation: Cyclin D1 Antibody [NBP2-16054] -
Immunoprecipitation of Cyclin D1 protein from MCF-7 whole cell extracts
 using 5 ug of Cyclin D1 antibody [N1C3]. Western blot analysis was
 performed using Cyclin D1 antibody [N1C3]. EasyBlot anti-Rabbit IgG
 was used as a secondary reagent.



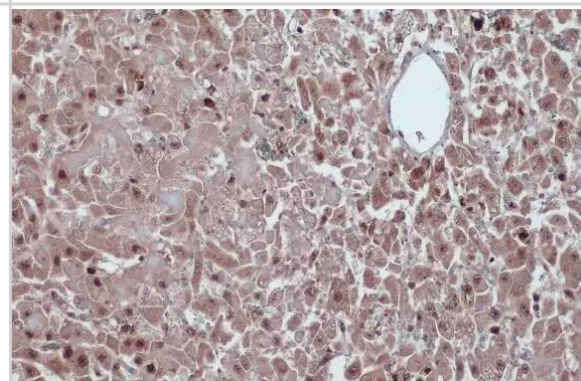
ELISA: Cyclin D1 Antibody [NBP2-16054] - Detection of recombinant full-length Cyclin D1 protein using as capture antibody at concentration of 5 ug/mL and as detection antibody at concentration of 1 ug/mL. Rabbit IgG antibody (HRP) (NBP2-19301) was diluted at 1:10000 and used to detect the primary antibody.



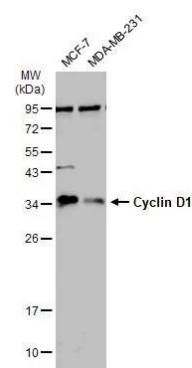
Western Blot: Cyclin D1 Antibody [NBP2-16054] - Whole cell extract (30 ug) was separated by 12% SDS-PAGE, and the membrane was blotted with Cyclin D1 antibody (NBP2-16054) diluted at 1:5000. The HRP-conjugated anti-rabbit IgG antibody was used to detect the primary antibody, and the signal was developed with Trident ECL plus-Enhanced.



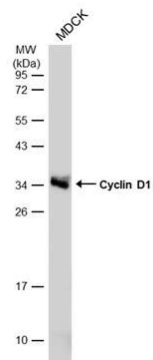
Immunohistochemistry-Paraffin: Cyclin D1 Antibody [NBP2-16054] -
 Cyclin D1 antibody detects Cyclin D1 protein at cytoplasm and nucleus
 by immunohistochemical analysis. Sample: Paraffin-embedded cat
 liver. Cyclin D1 stained by Cyclin D1 antibody (NBP2-16054) diluted at
 1:500. Antigen Retrieval: Citrate buffer, pH 6.0, 15 min



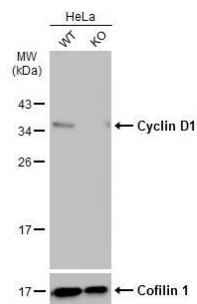
Western Blot: Cyclin D1 Antibody [NBP2-16054] - Various whole cell extracts (30 ug) were separated by 12% SDS-PAGE, and the membrane was blotted with Cyclin D1 antibody [N1C3] (NBP2-16054) diluted at 1:500. The HRP-conjugated anti-rabbit IgG antibody was used to detect the primary antibody.



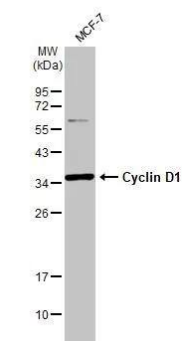
Western Blot: Cyclin D1 Antibody [NBP2-16054] - Whole cell extract (30 ug) was separated by 12% SDS-PAGE, and the membrane was blotted with Cyclin D1 antibody (NBP2-16054) diluted at 1:5000. The HRP-conjugated anti-rabbit IgG antibody was used to detect the primary antibody, and the signal was developed with Trident ECL plus-Enhanced.



Western Blot: Cyclin D1 Antibody [NBP2-16054] - Wild-type (WT) and Cyclin D1 knockout (KO) HeLa cell extracts (30 ug) were separated by 12% SDS-PAGE, and the membrane was blotted with Cyclin D1 antibody [N1C3] diluted at 1:1000. The HRP-conjugated anti-rabbit IgG antibody was used to detect the primary antibody.



Whole cell extract (30 ug) was separated by 12% SDS-PAGE, and the membrane was blotted with Cyclin D1 antibody [N1C3] (NBP2-16054) diluted at 1:500. The HRP-conjugated anti-rabbit IgG antibody was used to detect the primary antibody.



Publications

Lee JH, Ju-Hyun A, Youn HY Tumour necrosis factor stimulated gene 6 intrinsically regulates PD-L1 expressions in breast cancer cells, leading to modulation of tumour microenvironment Veterinary and comparative oncology 2023-02-20 [PMID: 36807440]



Novus Biologicals USA

10730 E. Briarwood Avenue
Centennial, CO 80112
USA
Phone: 303.730.1950
Toll Free: 1.888.506.6887
Fax: 303.730.1966
nb-customerservice@bio-techne.com

Bio-Techne Canada

21 Canmotor Ave
Toronto, ON M8Z 4E6
Canada
Phone: 905.827.6400
Toll Free: 855.668.8722
Fax: 905.827.6402
canada.inquires@bio-techne.com

Bio-Techne Ltd

19 Barton Lane
Abingdon Science Park
Abingdon, OX14 3NB, United Kingdom
Phone: (44) (0) 1235 529449
Free Phone: 0800 37 34 15
Fax: (44) (0) 1235 533420
info.EMEA@bio-techne.com

General Contact Information

www.novusbio.com
Technical Support: nb-technical@bio-techne.com
Orders: nb-customerservice@bio-techne.com
General: novus@novusbio.com

Products Related to NBP2-16054

NBP2-33376H	Blue Marker Antibody (6F4-F6) [HRP]
HAF008	Goat anti-Rabbit IgG Secondary Antibody [HRP]
NB7160	Goat anti-Rabbit IgG (H+L) Secondary Antibody [HRP]
NBP2-24891	Rabbit IgG Isotype Control

Limitations

This product is for research use only and is not approved for use in humans or in clinical diagnosis. Primary Antibodies are guaranteed for 1 year from date of receipt.

For more information on our 100% guarantee, please visit www.novusbio.com/guarantee

Earn gift cards/discounts by submitting a review: www.novusbio.com/reviews/submit/NBP2-16054

Earn gift cards/discounts by submitting a publication using this product:
www.novusbio.com/publications

