

Product Datasheet

MCAM/CD146 Antibody - Azide Free NBP2-15778

Unit Size: 0.1 ml

Aliquot and store at -20C or -80C. Avoid freeze-thaw cycles.

www.novusbio.com



technical@novusbio.com

Publications: 1

Protocols, Publications, Related Products, Reviews, Research Tools and Images at:
www.novusbio.com/NBP2-15778

Updated 9/9/2025 v.20.1

Earn rewards for product
reviews and publications.

Submit a publication at www.novusbio.com/publications

Submit a review at www.novusbio.com/reviews/destination/NBP2-15778



NBP2-15778**MCAM/CD146 Antibody - Azide Free**

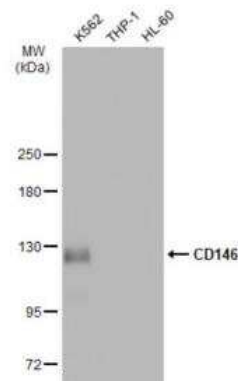
Product Information	
Unit Size	0.1 ml
Concentration	Concentrations vary lot to lot. See vial label for concentration. If unlisted please contact technical services.
Storage	Aliquot and store at -20C or -80C. Avoid freeze-thaw cycles.
Clonality	Polyclonal
Preservative	0.025% Proclin 300
Isotype	IgG
Purity	Antigen Affinity-purified
Buffer	PBS, 1% BSA, 20% Glycerol
Target Molecular Weight	72 kDa

Product Description	
Description	Novus Biologicals Knockout (KO) Validated Rabbit MCAM/CD146 Antibody - Azide Free (NBP2-15778) is a polyclonal antibody validated for use in IHC, WB and ICC/IF. Anti-MCAM/CD146 Antibody: Cited in 1 publication. All Novus Biologicals antibodies are covered by our 100% guarantee.
Host	Rabbit
Gene ID	4162
Gene Symbol	MCAM
Species	Human, Mouse, Rat
Immunogen	Recombinant protein encompassing a sequence within the C-terminus region of human MCAM/CD146. The exact sequence is proprietary.

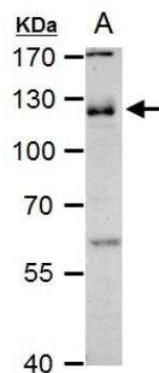
Product Application Details	
Applications	Western Blot, Immunohistochemistry-Paraffin, Immunocytochemistry/Immunofluorescence, Immunohistochemistry, Knockout Validated
Recommended Dilutions	Western Blot 1:500-1:3000, Immunohistochemistry 1:100-1:1000, Immunocytochemistry/ Immunofluorescence 1:100-1:1000, Immunohistochemistry-Paraffin 1:100-1:1000, Knockout Validated

Images

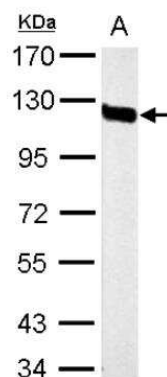
Western Blot: MCAM/CD146 Antibody [NBP2-15778] - Various whole cell extracts (30 ug) were separated by 5% SDS-PAGE, and the membrane was blotted with CD146 antibody [C1C3] diluted at 1:1000. The HRP-conjugated anti-rabbit IgG antibody (NBP2-19301) was used to detect the primary antibody.



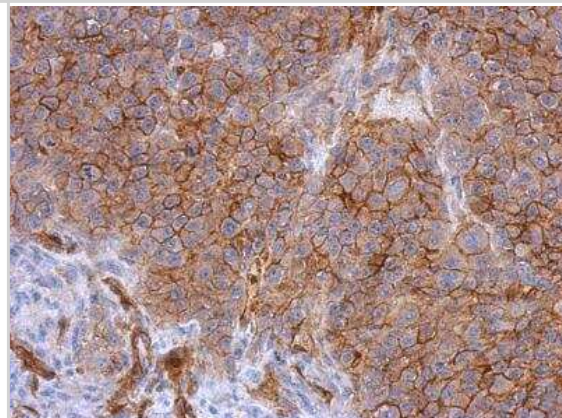
Western Blot: MCAM/CD146 Antibody [NBP2-15778] - A. 50 ug rat liver extract 7.5 % SDS-PAGE CD146 antibody [C1C3] dilution: 1:1000



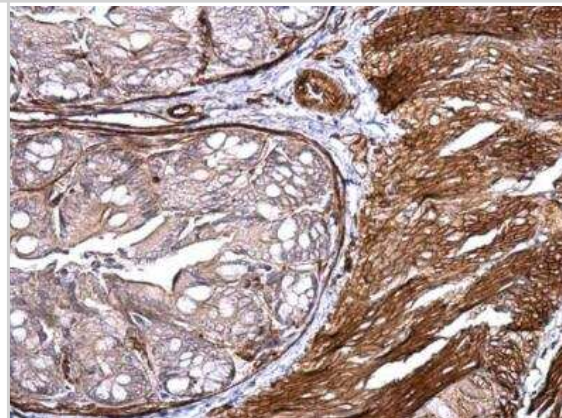
Western Blot: MCAM/CD146 Antibody [NBP2-15778] - A. 30 ug HUVEC whole cell lysate/extract 7.5 % SDS-PAGE CD146 antibody [C1C3] dilution: 1:10000



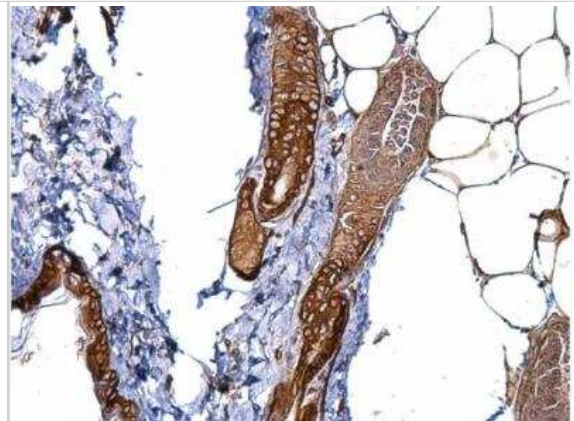
Immunohistochemistry-Paraffin: MCAM/CD146 Antibody [NBP2-15778] - J5 xenograft, using CD146 antibody at 1:500 dilution. Antigen Retrieval: Trilogy™ (EDTA based, pH 8.0) buffer, 15min.



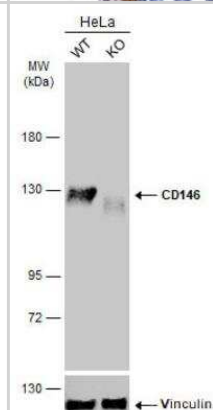
Immunohistochemistry-Paraffin: MCAM/CD146 Antibody [NBP2-15778] - Mouse colon. CD146 antibody [C1C3] dilution: 1:500. Antigen Retrieval: Trilogy™ (EDTA based, pH 8.0) buffer, 15min.



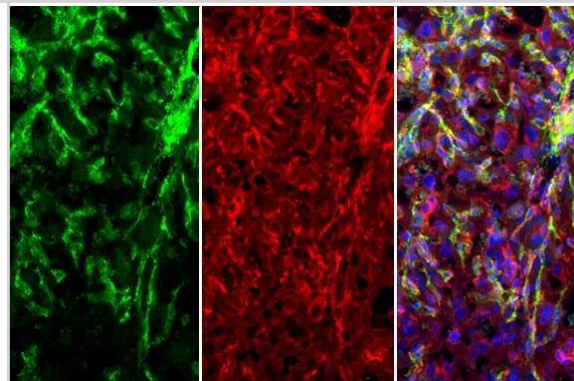
Immunohistochemistry-Paraffin: MCAM/CD146 Antibody [NBP2-15778] - Mouse skin. CD146 antibody [C1C3] dilution: 1:500. Antigen Retrieval: Trilogy™ (EDTA based, pH 8.0) buffer, 15min.



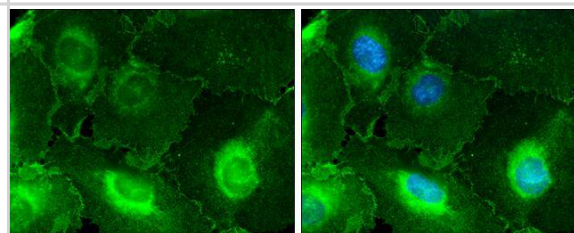
Western Blot: MCAM/CD146 Antibody [NBP2-15778] - Wild-type (WT) and CD146 knockout (KO) HeLa cell extracts (30 ug) were separated by 5% SDS-PAGE, and the membrane was blotted with CD146 antibody diluted at 1:1000. HRP-conjugated anti-rabbit IgG antibody was used to detect the primary antibody.



CD146 antibody [C1C3] detects CD146 protein at cell membrane by immunohistochemical analysis. Sample: Paraffin-embedded mouse placenta. Green: CD146 stained by CD146 antibody [C1C3] (NBP2-15778) diluted at 1:250. Red: alpha Tubulin, a cytoskeleton marker, stained by alpha Tubulin antibody [GT114] diluted at 1:1000. Blue: Fluoroshield with DAPI. Antigen Retrieval: Citrate buffer, pH 6.0, 15 min



CD146 antibody [C1C3] detects CD146 protein at cell membrane and cytoplasm by immunofluorescent analysis. Sample: HUVEC cells were fixed in 4% paraformaldehyde at RT for 15 min. Green: CD146 protein stained by CD146 antibody [C1C3] (NBP2-15778) diluted at 1:500. Blue: Hoechst 33342 staining.



Publications

England CG, Jiang D, Hernandez R et al. ImmunoPET Imaging of CD146 in Murine Models of Intrapulmonary Metastasis of Non-Small Cell Lung Cancer Mol Pharm 2017-08-22 [PMID: 28825843] (Mouse)



Novus Biologicals USA

10730 E. Briarwood Avenue
Centennial, CO 80112
USA
Phone: 303.730.1950
Toll Free: 1.888.506.6887
Fax: 303.730.1966
nb-customerservice@bio-techne.com

Bio-Techne Canada

21 Canmotor Ave
Toronto, ON M8Z 4E6
Canada
Phone: 905.827.6400
Toll Free: 855.668.8722
Fax: 905.827.6402
canada.inquires@bio-techne.com

Bio-Techne Ltd

19 Barton Lane
Abingdon Science Park
Abingdon, OX14 3NB, United Kingdom
Phone: (44) (0) 1235 529449
Free Phone: 0800 37 34 15
Fax: (44) (0) 1235 533420
info.EMEA@bio-techne.com

General Contact Information

www.novusbio.com
Technical Support: nb-technical@bio-techne.com
Orders: nb-customerservice@bio-techne.com
General: novus@novusbio.com

Products Related to NBP2-15778

NBP2-33376H	Blue Marker Antibody (6F4-F6) [HRP]
HAF008	Goat anti-Rabbit IgG Secondary Antibody [HRP]
NB7160	Goat anti-Rabbit IgG (H+L) Secondary Antibody [HRP]
NBP2-24891	Rabbit IgG Isotype Control

Limitations

This product is for research use only and is not approved for use in humans or in clinical diagnosis. Primary Antibodies are guaranteed for 1 year from date of receipt.

For more information on our 100% guarantee, please visit www.novusbio.com/guarantee

Earn gift cards/discounts by submitting a review: www.novusbio.com/reviews/submit/NBP2-15778

Earn gift cards/discounts by submitting a publication using this product:
www.novusbio.com/publications

