

Product Datasheet

Carboxypeptidase E/CPE Antibody - BSA Free NBP2-15699

Unit Size: 0.1 ml

Aliquot and store at -20C or -80C. Avoid freeze-thaw cycles.

www.novusbio.com



technical@novusbio.com

Reviews: 1 Publications: 1

Protocols, Publications, Related Products, Reviews, Research Tools and Images at:
www.novusbio.com/NBP2-15699

Updated 9/25/2025 v.20.1

**Earn rewards for product
reviews and publications.**

Submit a publication at www.novusbio.com/publications

Submit a review at www.novusbio.com/reviews/destination/NBP2-15699

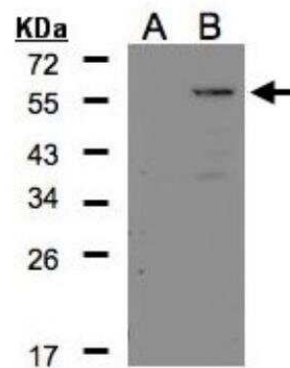


NBP2-15699**Carboxypeptidase E/CPE Antibody - BSA Free**

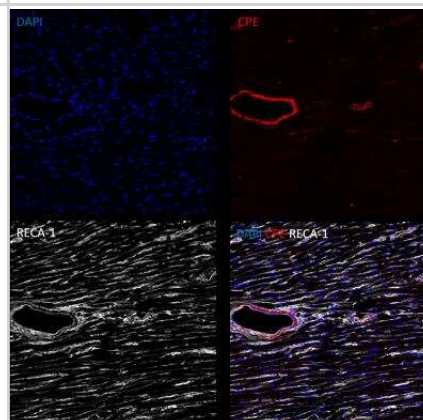
Product Information	
Unit Size	0.1 ml
Concentration	Concentrations vary lot to lot. See vial label for concentration. If unlisted please contact technical services.
Storage	Aliquot and store at -20C or -80C. Avoid freeze-thaw cycles.
Clonality	Polyclonal
Preservative	0.01% Thimerosal
Isotype	IgG
Purity	Antigen Affinity-purified
Buffer	0.1M Tris, 0.1M Glycine, 10% Glycerol
Target Molecular Weight	53 kDa
Product Description	
Description	Novus Biologicals Rabbit Carboxypeptidase E/CPE Antibody - BSA Free (NBP2-15699) is a polyclonal antibody validated for use in IHC, WB and ICC/IF. Anti-Carboxypeptidase E/CPE Antibody: Cited in 1 publication. All Novus Biologicals antibodies are covered by our 100% guarantee.
Host	Rabbit
Gene ID	1363
Gene Symbol	CPE
Species	Human, Mouse, Rat
Reactivity Notes	Zebrafish (85%), Xenopus laevis (83%). Rat reactivity reported from a verified customer review.
Immunogen	Recombinant protein encompassing a sequence within the center region of human Carboxypeptidase E/CPE. The exact sequence is proprietary.
Product Application Details	
Applications	Western Blot, Immunohistochemistry-Paraffin, Immunocytochemistry/Immunofluorescence, Immunohistochemistry, Immunohistochemistry-Frozen
Recommended Dilutions	Western Blot 1:500-1:10000, Immunohistochemistry 1:100-1:1000, Immunocytochemistry/ Immunofluorescence, Immunohistochemistry-Paraffin 1:100-1:1000, Immunohistochemistry-Frozen
Application Notes	Use in ICC/IF was reported in scientific literature (PMID: 28978054). Immunohistochemistry-Frozen from a verified customer review.

Images

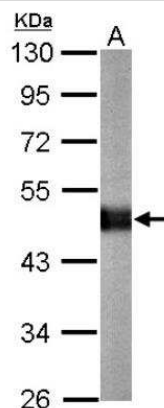
Western Blot: Carboxypeptidase E/CPE Antibody [NBP2-15699] - Analysis of CPE expression in transfected 293T cell line by CPE polyclonal antibody. A: Non-transfected lysate. B: CPE transfected lysate. 12% SDS PAGE gel, diluted at 1:500.



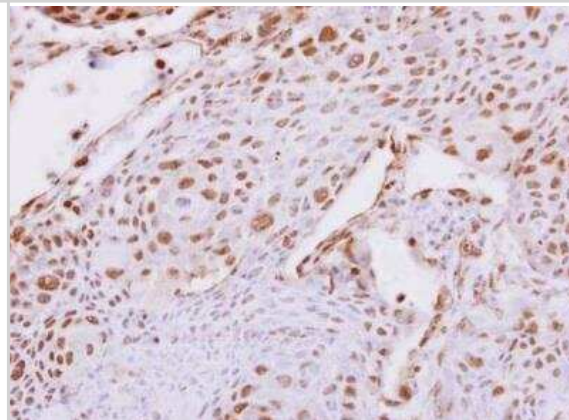
Immunohistochemistry-Frozen: Carboxypeptidase E/CPE Antibody [NBP2-15699] - Representative dual-immunofluorescence staining of rat endothelial cell antigen-1 (RECA-1) and carboxypeptidase E (CPE) in rat heart frozen sections. Image from verified customer review.



Western Blot: Carboxypeptidase E/CPE Antibody [NBP2-15699] - Sample (20 ug of whole cell lysate) A: mouse brain 10% SDS PAGE gel, diluted at 1:10000.



Immunohistochemistry-Paraffin: Carboxypeptidase E/CPE Antibody [NBP2-15699] - Human breast cancer. Carboxypeptidase E antibody [N2C2], Internal dilution: 1:500. Antigen Retrieval: Trilogy™ (EDTA based, pH 8.0) buffer, 15min



Publications

Iлина Elena I, Armento Angela, Sanchez Leticia Garea et al. Effects of soluble CPE on glioma cell migration are associated with mTOR activation and enhanced glucose flux. *Oncotarget* 2017-06-27 [PMID: 28978054] (ICC, Human)



Novus Biologicals USA

10730 E. Briarwood Avenue
Centennial, CO 80112
USA
Phone: 303.730.1950
Toll Free: 1.888.506.6887
Fax: 303.730.1966
nb-customerservice@bio-techne.com

Bio-Techne Canada

21 Canmotor Ave
Toronto, ON M8Z 4E6
Canada
Phone: 905.827.6400
Toll Free: 855.668.8722
Fax: 905.827.6402
canada.inquires@bio-techne.com

Bio-Techne Ltd

19 Barton Lane
Abingdon Science Park
Abingdon, OX14 3NB, United Kingdom
Phone: (44) (0) 1235 529449
Free Phone: 0800 37 34 15
Fax: (44) (0) 1235 533420
info.EMEA@bio-techne.com

General Contact Information

www.novusbio.com
Technical Support: nb-technical@bio-techne.com
Orders: nb-customerservice@bio-techne.com
General: novus@novusbio.com

Products Related to NBP2-15699

NBP2-33376H	Blue Marker Antibody (6F4-F6) [HRP]
HAF008	Goat anti-Rabbit IgG Secondary Antibody [HRP]
NB7160	Goat anti-Rabbit IgG (H+L) Secondary Antibody [HRP]
NBP2-24891	Rabbit IgG Isotype Control

Limitations

This product is for research use only and is not approved for use in humans or in clinical diagnosis. Primary Antibodies are guaranteed for 1 year from date of receipt.

For more information on our 100% guarantee, please visit www.novusbio.com/guarantee

Earn gift cards/discounts by submitting a review: www.novusbio.com/reviews/submit/NBP2-15699

Earn gift cards/discounts by submitting a publication using this product:
www.novusbio.com/publications

