

# Product Datasheet

## beta II Tubulin A Antibody

### NBP2-15581

Unit Size: 0.1 ml

Aliquot and store at -20C or -80C. Avoid freeze-thaw cycles.

[www.novusbio.com](http://www.novusbio.com)



[technical@novusbio.com](mailto:technical@novusbio.com)

Protocols, Publications, Related Products, Reviews, Research Tools and Images at:  
[www.novusbio.com/NBP2-15581](http://www.novusbio.com/NBP2-15581)

Updated 9/25/2025 v.20.1

Earn rewards for product  
reviews and publications.

Submit a publication at [www.novusbio.com/publications](http://www.novusbio.com/publications)

Submit a review at [www.novusbio.com/reviews/destination/NBP2-15581](http://www.novusbio.com/reviews/destination/NBP2-15581)



**NBP2-15581**

beta II Tubulin A Antibody

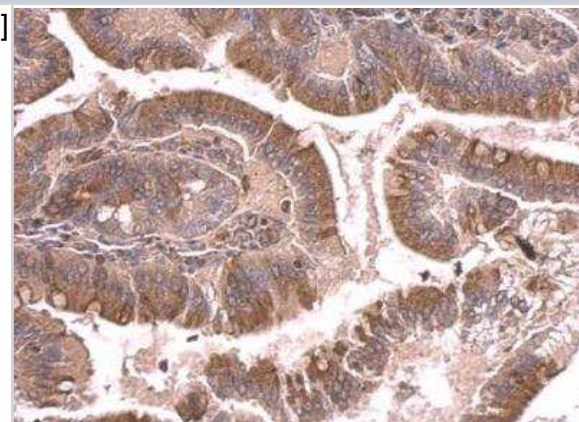
Product Information	
Unit Size	0.1 ml
Concentration	Concentrations vary lot to lot. See vial label for concentration. If unlisted please contact technical services.
Storage	Aliquot and store at -20C or -80C. Avoid freeze-thaw cycles.
Clonality	Polyclonal
Preservative	0.01% Thimerosal
Isotype	IgG
Purity	Antigen Affinity-purified
Buffer	PBS, 20% Glycerol
Target Molecular Weight	50 kDa

Product Description	
Description	Novus Biologicals Rabbit beta II Tubulin A Antibody (NBP2-15581) is a polyclonal antibody validated for use in IHC, WB and ICC/IF. All Novus Biologicals antibodies are covered by our 100% guarantee.
Host	Rabbit
Gene ID	7280
Gene Symbol	TUBB2A
Species	Human, Mouse, Rat, Drosophila
Immunogen	Recombinant protein encompassing a sequence within the center region of human beta Tubulin 2. The exact sequence is proprietary.

Product Application Details	
Applications	Western Blot, Immunohistochemistry-Paraffin, Immunocytochemistry/Immunofluorescence, Immunohistochemistry
Recommended Dilutions	Western Blot 1:500-1:3000, Immunohistochemistry 10 - 1:500, Immunocytochemistry/ Immunofluorescence 1:100-1:1000, Immunohistochemistry-Paraffin 1:100-1:1000

**Images**

Immunohistochemistry-Paraffin: beta II Tubulin A Antibody [NBP2-15581]  
 - Mouse duodenum. beta Tubulin 2 antibody dilution: 1:500. Antigen Retrieval: Trilogy™ (EDTA based, pH 8.0) buffer, 15min.

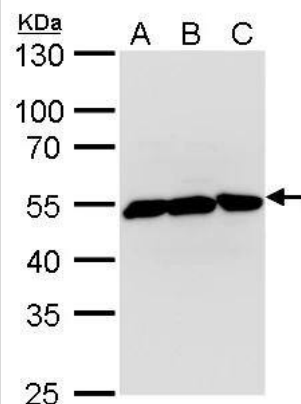


beta Tubulin 2 antibody detects beta Tubulin 2 protein by Western blot analysis.

- A. 30 ug Jurkat whole cell lysate/extract
- B. 30 ug Raji whole cell lysate/extract
- C. 30 ug NCI-H929 whole cell lysate/extract

10 % SDS-PAGE

beta Tubulin 2 antibody (NBP2-15581) dilution: 1:5000

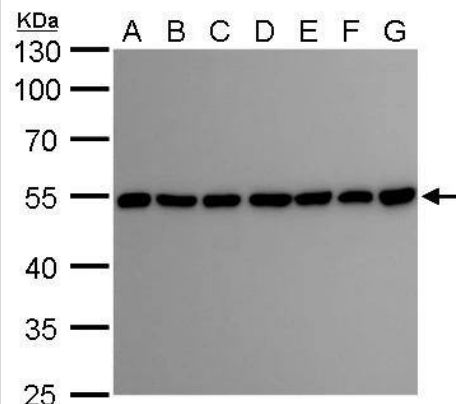


beta Tubulin 2 antibody detects beta Tubulin 2 protein by Western blot analysis.

- A. 30 ug Neuro2A whole cell lysate/extract
- B. 30 ug GL261 whole cell lysate/extract
- C. 30 ug C8D30 whole cell lysate/extract
- D. 30 ug NIH-3T3 whole cell lysate/extract
- E. 30 ug BCL-1 whole cell lysate/extract
- F. 30 ug Raw 264.7 whole cell lysate/extract
- G. 30 ug C2C12 whole cell lysate/extract

10 % SDS-PAGE

beta Tubulin 2 antibody (NBP2-15581) dilution: 1:5000

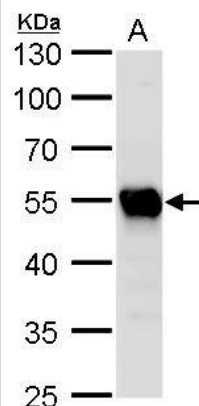


beta Tubulin 2 antibody detects beta Tubulin 2 protein by Western blot analysis.

- A. 50 ug rat brain lysate/extract

10 % SDS-PAGE

beta Tubulin 2 antibody (NBP2-15581) dilution: 1:5000

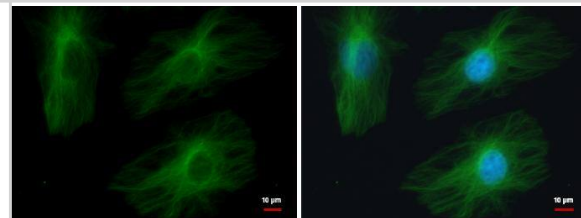


TUBB2A antibody detects TUBB2A protein at cytoskeleton by immunofluorescent analysis.

Sample: HeLa cells were fixed in 4% paraformaldehyde/PBS for 15 min.

Green: TUBB2A protein stained by TUBB2A antibody (NBP2-15581) diluted at 1:500.

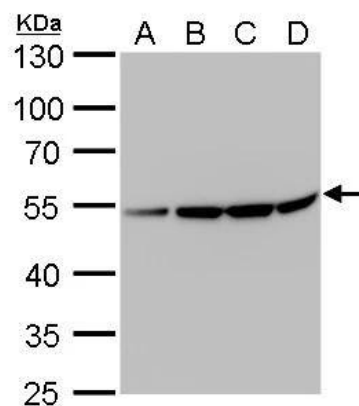
Blue: Hoechst 33342 staining.



beta Tubulin 2 antibody detects beta Tubulin 2 protein by Western blot analysis.

- A. 30 ug U87-MG whole cell lysate/extract
  - B. 30 ug SK-N-SH whole cell lysate/extract
  - C. 30 ug IMR32 whole cell lysate/extract
  - D. 30 ug SK-N-AS whole cell lysate/extract
- 10 % SDS-PAGE

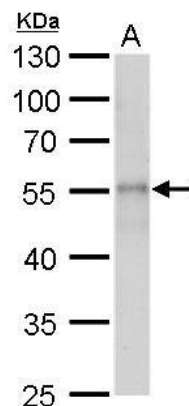
beta Tubulin 2 antibody (NBP2-15581) dilution: 1:10000



beta Tubulin 2 antibody detects beta Tubulin 2 protein by Western blot analysis.

- A. 30 ug drosophila lysate/extract
- 10 % SDS-PAGE

beta Tubulin 2 antibody (NBP2-15581) dilution: 1:2000





### **Novus Biologicals USA**

10730 E. Briarwood Avenue  
Centennial, CO 80112  
USA  
Phone: 303.730.1950  
Toll Free: 1.888.506.6887  
Fax: 303.730.1966  
nb-customerservice@bio-techne.com

### **Bio-Techne Canada**

21 Canmotor Ave  
Toronto, ON M8Z 4E6  
Canada  
Phone: 905.827.6400  
Toll Free: 855.668.8722  
Fax: 905.827.6402  
canada.inquires@bio-techne.com

### **Bio-Techne Ltd**

19 Barton Lane  
Abingdon Science Park  
Abingdon, OX14 3NB, United Kingdom  
Phone: (44) (0) 1235 529449  
Free Phone: 0800 37 34 15  
Fax: (44) (0) 1235 533420  
info.EMEA@bio-techne.com

### **General Contact Information**

www.novusbio.com  
Technical Support: nb-technical@bio-techne.com  
Orders: nb-customerservice@bio-techne.com  
General: novus@novusbio.com

### **Products Related to NBP2-15581**

---

NBP2-33376H	Blue Marker Antibody (6F4-F6) [HRP]
HAF008	Goat anti-Rabbit IgG Secondary Antibody [HRP]
NB7160	Goat anti-Rabbit IgG (H+L) Secondary Antibody [HRP]
NBP2-24891	Rabbit IgG Isotype Control

---

### **Limitations**

This product is for research use only and is not approved for use in humans or in clinical diagnosis. Primary Antibodies are guaranteed for 1 year from date of receipt.

For more information on our 100% guarantee, please visit [www.novusbio.com/guarantee](http://www.novusbio.com/guarantee)

Earn gift cards/discounts by submitting a review: [www.novusbio.com/reviews/submit/NBP2-15581](http://www.novusbio.com/reviews/submit/NBP2-15581)

Earn gift cards/discounts by submitting a publication using this product:  
[www.novusbio.com/publications](http://www.novusbio.com/publications)

