

Product Datasheet

Aldehyde Dehydrogenase 1-A1/ALDH1A1 Antibody NBP2-15336

Unit Size: 0.1 ml

Aliquot and store at -20C or -80C. Avoid freeze-thaw cycles.

www.novusbio.com



technical@novusbio.com

Publications: 3

Protocols, Publications, Related Products, Reviews, Research Tools and Images at:
www.novusbio.com/NBP2-15336

Updated 9/9/2025 v.20.1

Earn rewards for product
reviews and publications.

Submit a publication at www.novusbio.com/publications

Submit a review at www.novusbio.com/reviews/destination/NBP2-15336

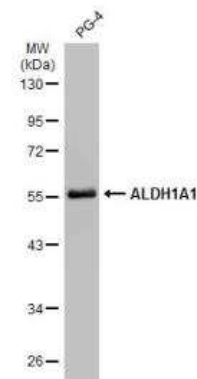


NBP2-15336**Aldehyde Dehydrogenase 1-A1/ALDH1A1 Antibody**

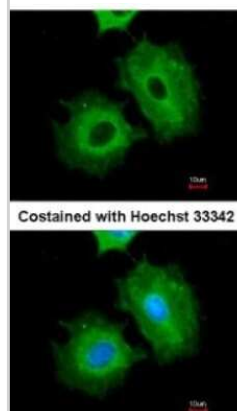
Product Information	
Unit Size	0.1 ml
Concentration	Concentrations vary lot to lot. See vial label for concentration. If unlisted please contact technical services.
Storage	Aliquot and store at -20C or -80C. Avoid freeze-thaw cycles.
Clonality	Polyclonal
Preservative	0.01% Thimerosal
Isotype	IgG
Purity	Antigen Affinity-purified
Buffer	PBS, 1% BSA, 20% Glycerol
Target Molecular Weight	55 kDa
Product Description	
Description	Novus Biologicals Rabbit Aldehyde Dehydrogenase 1-A1/ALDH1A1 Antibody (NBP2-15336) is a polyclonal antibody validated for use in IHC, WB and ICC/IF. Anti-Aldehyde Dehydrogenase 1-A1/ALDH1A1 Antibody: Cited in 3 publications. All Novus Biologicals antibodies are covered by our 100% guarantee.
Host	Rabbit
Gene ID	216
Gene Symbol	ALDH1A1
Species	Human, Mouse, Rat, Feline, Zebrafish
Reactivity Notes	Cat (100%), Xenopus laevis (81%), Chicken (86%).
Marker	Astrocyte Marker
Immunogen	Recombinant protein encompassing a sequence within the center region of human Aldehyde Dehydrogenase 1-A1/ALDH1A1. The exact sequence is proprietary.
Product Application Details	
Applications	Western Blot, Immunohistochemistry-Paraffin, Immunocytochemistry/Immunofluorescence, Immunohistochemistry, Immunohistochemistry Whole-Mount
Recommended Dilutions	Western Blot 1:5000-1:20000, Immunohistochemistry 1:100-1:1000, Immunocytochemistry/ Immunofluorescence 1:100-1:1000, Immunohistochemistry-Paraffin 1:100-1:1000, Immunohistochemistry Whole-Mount Assay dependent

Images

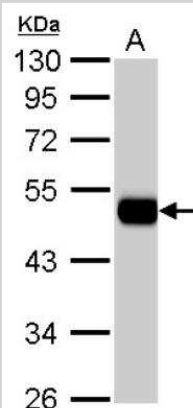
Western Blot: Aldehyde Dehydrogenase 1-A1/ALDH1A1 Antibody [NBP2-15336] - PG-4 whole cell extract (30 ug) was separated by 10% SDS-PAGE, and the membrane was blotted with ALDH1A1 antibody diluted at 1:10000. The HRP-conjugated anti-rabbit IgG antibody (NBP2-19301) was used to detect the primary antibody.



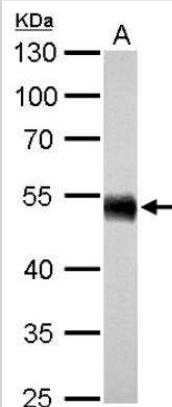
Immunocytochemistry/Immunofluorescence: Aldehyde Dehydrogenase 1-A1/ALDH1A1 Antibody [NBP2-15336] - Analysis of methanol-fixed A549, using antibody at 1:500 dilution.



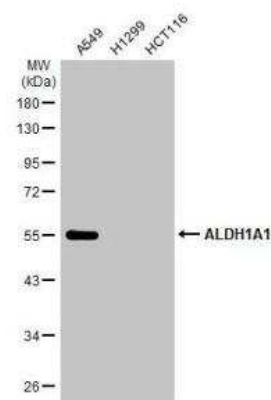
Western Blot: Aldehyde Dehydrogenase 1-A1/ALDH1A1 Antibody [NBP2-15336] - Detects ALDH1A1 protein by Western blot analysis. A. 50 ug rat liver lysate/extract 10 % SDS-PAGE Dilution: 1:5000



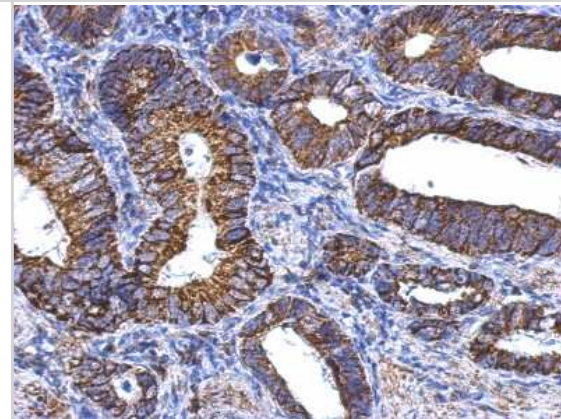
Western Blot: Aldehyde Dehydrogenase 1-A1/ALDH1A1 Antibody [NBP2-15336] - Detects ALDH1A1 protein by Western blot analysis. A. 50 ug mouse liver lysate/extract 10 % SDS-PAGE Dilution: 1:5000



Western Blot: Aldehyde Dehydrogenase 1-A1/ALDH1A1 Antibody [NBP2-15336] - Various whole cell extracts (30 ug) were separated by 10% SDS-PAGE, and the membrane was blotted with ALDH1A1 antibody diluted at 1:10000. The HRP-conjugated anti-rabbit IgG antibody (NBP2-19301) was used to detect the primary antibody.

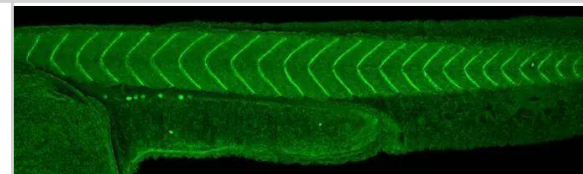


Immunohistochemistry-Paraffin: Aldehyde Dehydrogenase 1-A1/ALDH1A1 Antibody [NBP2-15336] - Human gastric cancer, using ALDH1A1 antibody at 1:500 dilution. Antigen Retrieval: Trilogy™ (EDTA based, pH 8.0) buffer, 15min.



ALDH1A1 antibody detects Aldh1a2 protein on whole-mount zebrafish embryos by immunohistochemical analysis.?

Sample: Paraformaldehyde-fixed zebrafish embryos.
ALDH1A1 antibody (NBP2-15336) dilution: 1:200.



Publications

Zhang D, Hao W, Li X et al. Aldh1a1 and Scl25a30 in diaphragmatic dysfunction *Experimental biology and medicine* (Maywood, N.J.) 2022-04-11 [PMID: 35410502]

Dominguez C, McCampbell KK, David JM, Palena C. Neutralization of IL-8 decreases tumor PMN-MDSCs and reduces mesenchymalization of claudin-low triple-negative breast cancer *JCI Insight*. 2017-11-02 [PMID: 29093275] (IF/IHC, Mouse)

Choi SA, Lee JY, Phi JH et al. Identification of brain tumour initiating cells using the stem cell marker aldehyde dehydrogenase. *Eur J Cancer*. 2013-10-05 [PMID: 24103144] (IF/IHC, ICC/IF, Mouse, Human)



Novus Biologicals USA

10730 E. Briarwood Avenue
Centennial, CO 80112
USA
Phone: 303.730.1950
Toll Free: 1.888.506.6887
Fax: 303.730.1966
nb-customerservice@bio-techne.com

Bio-Techne Canada

21 Canmotor Ave
Toronto, ON M8Z 4E6
Canada
Phone: 905.827.6400
Toll Free: 855.668.8722
Fax: 905.827.6402
canada.inquires@bio-techne.com

Bio-Techne Ltd

19 Barton Lane
Abingdon Science Park
Abingdon, OX14 3NB, United Kingdom
Phone: (44) (0) 1235 529449
Free Phone: 0800 37 34 15
Fax: (44) (0) 1235 533420
info.EMEA@bio-techne.com

General Contact Information

www.novusbio.com
Technical Support: nb-technical@bio-techne.com
Orders: nb-customerservice@bio-techne.com
General: novus@novusbio.com

Products Related to NBP2-15336

NBP2-33376H	Blue Marker Antibody (6F4-F6) [HRP]
HAF008	Goat anti-Rabbit IgG Secondary Antibody [HRP]
NB7160	Goat anti-Rabbit IgG (H+L) Secondary Antibody [HRP]
NBP2-24891	Rabbit IgG Isotype Control

Limitations

This product is for research use only and is not approved for use in humans or in clinical diagnosis. Primary Antibodies are guaranteed for 1 year from date of receipt.

For more information on our 100% guarantee, please visit www.novusbio.com/guarantee

Earn gift cards/discounts by submitting a review: www.novusbio.com/reviews/submit/NBP2-15336

Earn gift cards/discounts by submitting a publication using this product:
www.novusbio.com/publications

