

Product Datasheet

SATB1 Antibody NBP2-15107

Unit Size: 0.1 ml

Aliquot and store at -20C or -80C. Avoid freeze-thaw cycles.

www.novusbio.com



technical@novusbio.com

Protocols, Publications, Related Products, Reviews, Research Tools and Images at:
www.novusbio.com/NBP2-15107

Updated 9/25/2025 v.20.1

Earn rewards for product
reviews and publications.

Submit a publication at www.novusbio.com/publications

Submit a review at www.novusbio.com/reviews/destination/NBP2-15107



NBP2-15107

SATB1 Antibody

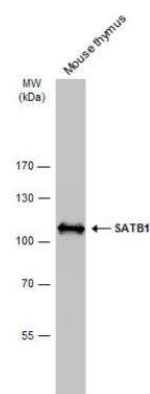
Product Information	
Unit Size	0.1 ml
Concentration	Concentrations vary lot to lot. See vial label for concentration. If unlisted please contact technical services.
Storage	Aliquot and store at -20C or -80C. Avoid freeze-thaw cycles.
Clonality	Polyclonal
Preservative	0.025% Proclin 300
Isotype	IgG
Purity	Antigen Affinity-purified
Buffer	PBS, 1% BSA, 20% Glycerol
Target Molecular Weight	86 kDa

Product Description	
Description	Novus Biologicals Rabbit SATB1 Antibody (NBP2-15107) is a polyclonal antibody validated for use in IHC, WB, IP and ChIP. All Novus Biologicals antibodies are covered by our 100% guarantee.
Host	Rabbit
Gene ID	6304
Gene Symbol	SATB1
Species	Human, Mouse
Immunogen	Recombinant protein encompassing a sequence within the C-terminus region of human SATB1. The exact sequence is proprietary.

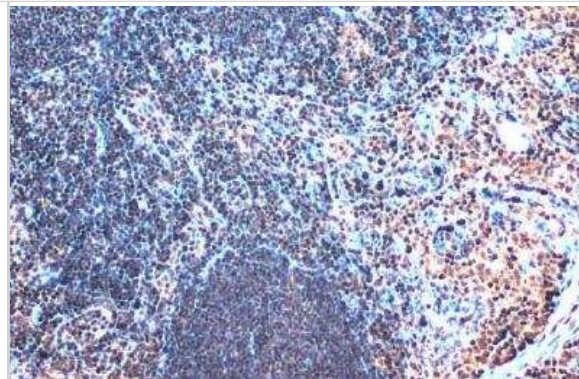
Product Application Details	
Applications	Western Blot, Immunohistochemistry-Paraffin, Immunohistochemistry, Immunoprecipitation, Chromatin Immunoprecipitation (ChIP)
Recommended Dilutions	Western Blot 1:500-1:10000, Immunohistochemistry 1:100-1:1000, Immunoprecipitation 1:100-1:500, Immunohistochemistry-Paraffin 1:100-1:1000, Chromatin Immunoprecipitation (ChIP)
Application Notes	ChIP assay-Assay dependent

Images

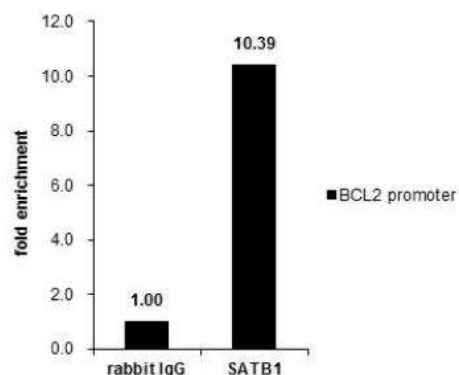
Western Blot: SATB1 Antibody [NBP2-15107] - Mouse tissue extract (50 ug) was separated by 7.5% SDS-PAGE, and the membrane was blotted with SATB1 antibody [C2C3], C-term diluted at 1:5000. The HRP-conjugated anti-rabbit IgG antibody (NBP2-19301) was used to detect the primary antibody.



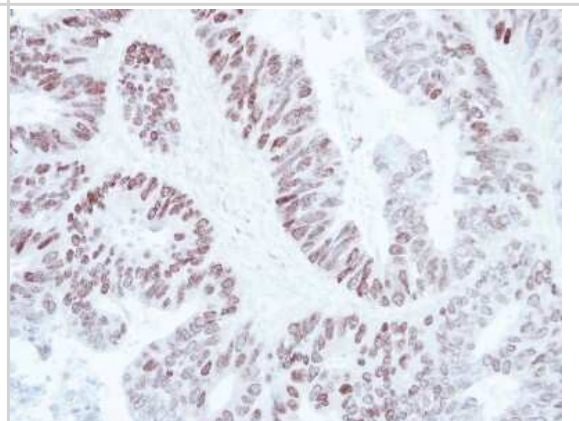
Immunohistochemistry-Paraffin: SATB1 Antibody [NBP2-15107] - Mouse lymph node. SATB1 stained by SATB1 antibody [C2C3], C-term diluted at 1:500. Antigen Retrieval: Citrate



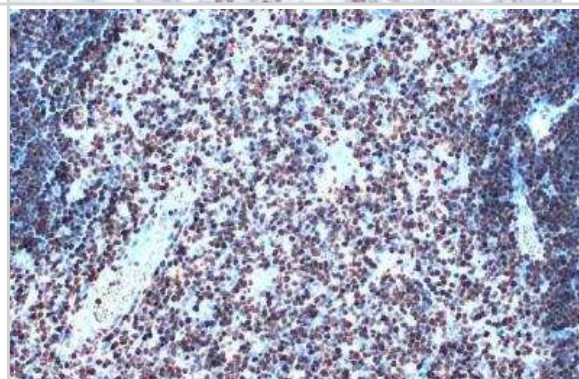
Chromatin Immunoprecipitation: SATB1 Antibody [NBP2-15107] - Cross-linked CHIP was performed with Jurkat chromatin extract and 5 ug of either control rabbit IgG or anti-SATB1 antibody. The precipitated DNA was detected by PCR with primer set targeting to BCL2 promoter. CHIP experiment and primer designs are based on Nucleic Acids Res. 2011 Jun;39(11):4640-52.



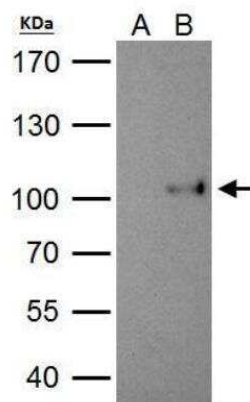
Immunohistochemistry-Paraffin: SATB1 Antibody [NBP2-15107] - Paraffin-embedded Colon ca, using antibody at 1:250 dilution.



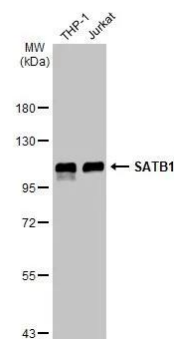
Immunohistochemistry-Paraffin: SATB1 Antibody [NBP2-15107] - Mouse thymus gland. SATB1 stained by SATB1 antibody [C2C3], C-term diluted at 1:500. Antigen Retrieval: Citra



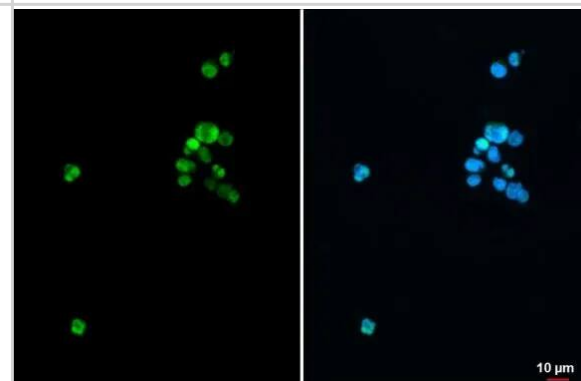
Immunoprecipitation: SATB1 Antibody [NBP2-15107] - 293T whole cell lysate/extract A. Control with 2 ug of preimmune rabbit IgG B. Immunoprecipitation of SATB1 protein by 2 ug of SATB1 antibody 7.5% SDS-PAGE The immunoprecipitated SATB1 protein was detected by SATB1 antibody diluted at 1:1000. EasyBlot anti-rabbit IgG was used as a secondary reagent.



Western Blot: SATB1 Antibody [NBP2-15107] - Various whole cell extracts (30 ug) were separated by 7.5% SDS-PAGE, and the membrane was blotted with SATB1 antibody [C2C3], C-term (NBP2-15107) diluted at 1:40000. The HRP-conjugated anti-rabbit IgG antibody was used to detect the primary antibody.



Immunocytochemistry/ Immunofluorescence: SATB1 Antibody [NBP2-15107] - SATB1 antibody [C2C3], C-term detects SATB1 protein at nucleus by immunofluorescent analysis. Sample: Jurkat cells were fixed in 4% paraformaldehyde at RT for 15 min. Green: SATB1 stained by SATB1 antibody [C2C3], C-term (NBP2-15107) diluted at 1:500. Blue: Fluoroshield with DAPI .





Novus Biologicals USA

10730 E. Briarwood Avenue
Centennial, CO 80112
USA
Phone: 303.730.1950
Toll Free: 1.888.506.6887
Fax: 303.730.1966
nb-customerservice@bio-techne.com

Bio-Techne Canada

21 Canmotor Ave
Toronto, ON M8Z 4E6
Canada
Phone: 905.827.6400
Toll Free: 855.668.8722
Fax: 905.827.6402
canada.inquires@bio-techne.com

Bio-Techne Ltd

19 Barton Lane
Abingdon Science Park
Abingdon, OX14 3NB, United Kingdom
Phone: (44) (0) 1235 529449
Free Phone: 0800 37 34 15
Fax: (44) (0) 1235 533420
info.EMEA@bio-techne.com

General Contact Information

www.novusbio.com
Technical Support: nb-technical@bio-techne.com
Orders: nb-customerservice@bio-techne.com
General: novus@novusbio.com

Products Related to NBP2-15107

NBP2-33376H	Blue Marker Antibody (6F4-F6) [HRP]
HAF008	Goat anti-Rabbit IgG Secondary Antibody [HRP]
NB7160	Goat anti-Rabbit IgG (H+L) Secondary Antibody [HRP]
NBP2-24891	Rabbit IgG Isotype Control

Limitations

This product is for research use only and is not approved for use in humans or in clinical diagnosis. Primary Antibodies are guaranteed for 1 year from date of receipt.

For more information on our 100% guarantee, please visit www.novusbio.com/guarantee

Earn gift cards/discounts by submitting a review: www.novusbio.com/reviews/submit/NBP2-15107

Earn gift cards/discounts by submitting a publication using this product:
www.novusbio.com/publications

