

Product Datasheet

RAB11B Antibody - BSA Free NBP2-15085

Unit Size: 0.1 ml

Aliquot and store at -20C or -80C. Avoid freeze-thaw cycles.

www.novusbio.com



technical@novusbio.com

Publications: 1

Protocols, Publications, Related Products, Reviews, Research Tools and Images at:
www.novusbio.com/NBP2-15085

Updated 9/25/2025 v.20.1

Earn rewards for product
reviews and publications.

Submit a publication at www.novusbio.com/publications

Submit a review at www.novusbio.com/reviews/destination/NBP2-15085



NBP2-15085

RAB11B Antibody - BSA Free

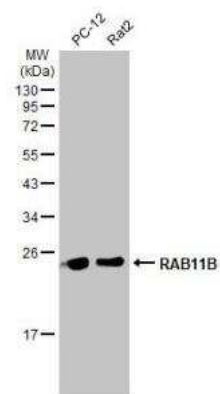
Product Information	
Unit Size	0.1 ml
Concentration	Concentrations vary lot to lot. See vial label for concentration. If unlisted please contact technical services.
Storage	Aliquot and store at -20C or -80C. Avoid freeze-thaw cycles.
Clonality	Polyclonal
Preservative	0.025% Proclin 300
Isotype	IgG
Purity	Antigen Affinity-purified
Buffer	PBS, 20% Glycerol
Target Molecular Weight	24 kDa

Product Description	
Description	Novus Biologicals Rabbit RAB11B Antibody - BSA Free (NBP2-15085) is a polyclonal antibody validated for use in IHC, WB and ICC/IF. Anti-RAB11B Antibody: Cited in 1 publication. All Novus Biologicals antibodies are covered by our 100% guarantee.
Host	Rabbit
Gene ID	9230
Gene Symbol	RAB11B
Species	Human, Mouse, Rat
Immunogen	Recombinant protein encompassing a sequence within the center region of human RAB11B. The exact sequence is proprietary.

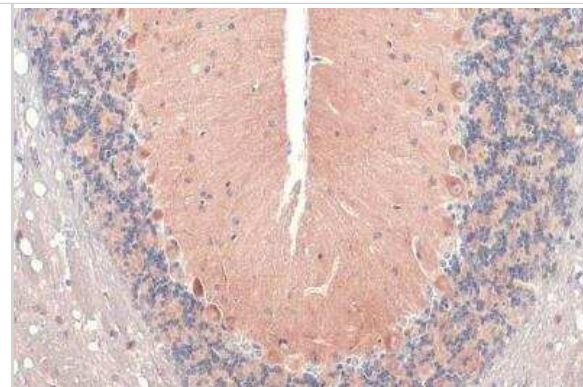
Product Application Details	
Applications	Western Blot, Immunohistochemistry-Paraffin, Immunocytochemistry/Immunofluorescence, Immunohistochemistry, Immunohistochemistry-Frozen
Recommended Dilutions	Western Blot 1:500-1:3000, Immunohistochemistry 1:100-1:1000, Immunocytochemistry/ Immunofluorescence 1:100-1:1000, Immunohistochemistry-Paraffin 1:100-1:1000, Immunohistochemistry-Frozen 1:100-1:1000

Images

Western Blot: RAB11B Antibody [NBP2-15085] - Various whole cell extracts (30 ug) were separated by 12% SDS-PAGE, and the membrane was blotted with RAB11B antibody [N1C3] diluted at 1:1000. The HRP-conjugated anti-rabbit IgG antibody (NBP2-19301) was used to detect the primary antibody.



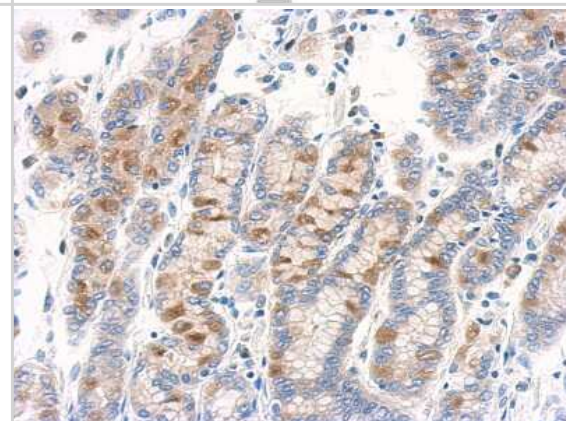
Immunohistochemistry-Paraffin: RAB11B Antibody [NBP2-15085] - Mouse brain. RAB11B stained by RAB11B antibody [N1C3] diluted at 1:500. Antigen Retrieval: Citrate buffer, pH 6.0, 15 min.



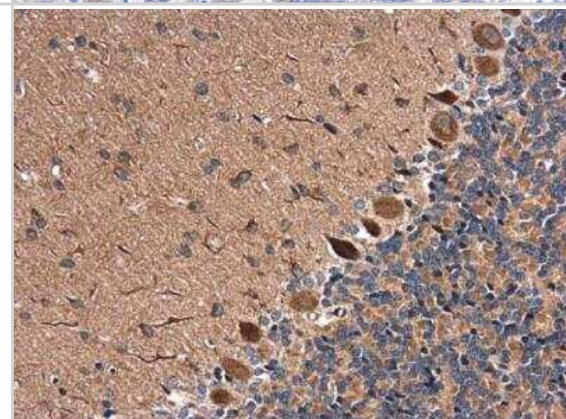
Western Blot: RAB11B Antibody [NBP2-15085] - Mouse tissue extract (50 ug) was separated by 12% SDS-PAGE, and the membrane was blotted with RAB11B antibody [N1C3] diluted at 1:1000. The HRP-conjugated anti-rabbit IgG antibody (NBP2-19301) was used to detect the primary antibody.



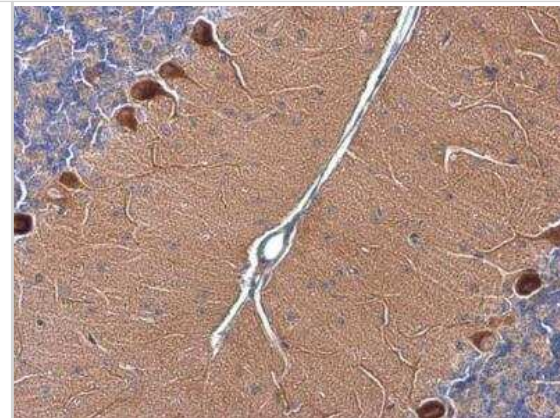
Immunohistochemistry-Paraffin: RAB11B Antibody [NBP2-15085] - Human colon carcinoma, using RAB11B antibody antibody at 1:500 dilution. Antigen Retrieval: Trilogy™ (EDTA based, pH 8.0) buffer, 15min.



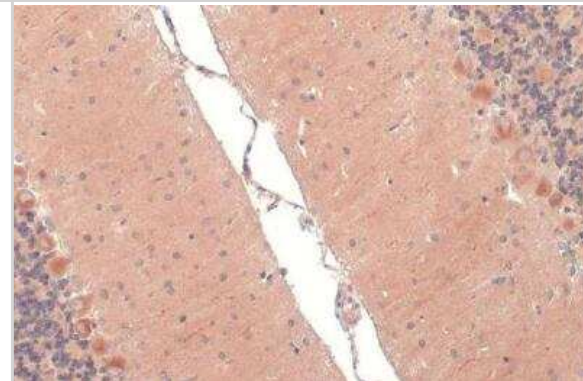
Immunohistochemistry-Paraffin: RAB11B Antibody [NBP2-15085] - Rat brain. RAB11B antibody [N1C3] diluted at 1:500. Antigen Retrieval: Citrate buffer, pH 6.0, 15 min.



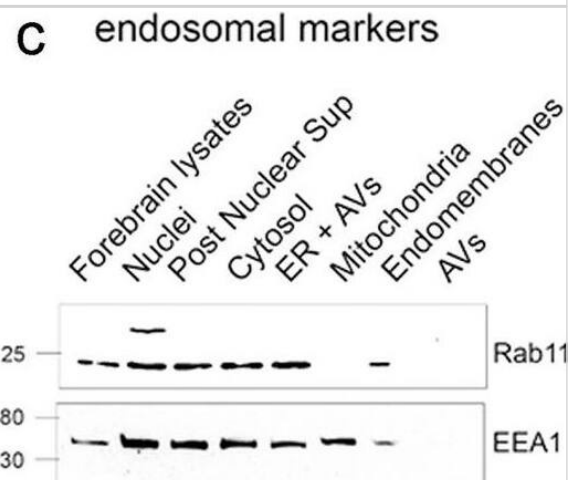
Immunohistochemistry-Paraffin: RAB11B Antibody [NBP2-15085] - Mouse brain. RAB11B stained by RAB11B antibody [N1C3] diluted at 1:1000. Antigen Retrieval: Citrate buffer, pH 6.0, 15 min.



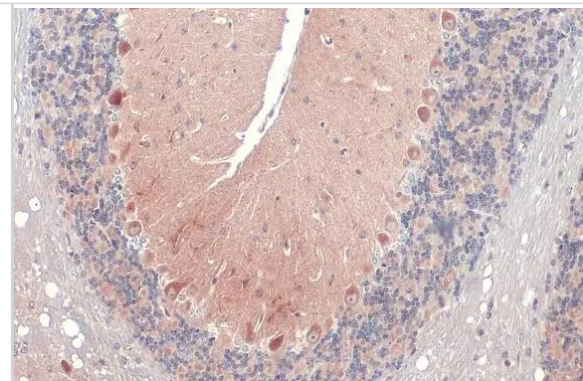
Immunohistochemistry-Paraffin: RAB11B Antibody [NBP2-15085] - Rat brain. RAB11B stained by RAB11B antibody [N1C3] diluted at 1:500. Antigen Retrieval: Citrate buffer, pH 6.0, 15 min.



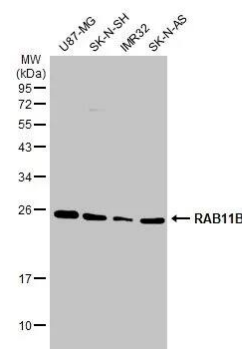
Western Blot: RAB11B Antibody [NBP2-15085] - Proteomic profiling of autophagic cargo during NMDAR-LTD. a–d WB analyses of different fractions along the autophagic vesicle purification procedure, using antibodies against a autophagosomal markers (LC3B, p62, Atg16L1, & Atg9A), b ER-Golgi markers (TGN, LMAN1, SAR1a), c endosomal markers (Rab11b, EEA1), & d markers of plasma-membrane (Stx4), extracellular vesicles (Alix) & nuclear extracts (TBP). N = 3 independent experiments. e Graph showing the cell component analysis, as false discovery rate (FDR)-corrected p-values, of dynamic cargo (total of 393 proteins) that is enriched (up) or less abundant (down) in AVs after LTD, compared to control. f Graphical representation of proteins enriched in AVs upon LTD, w/ relation to synapse. g WB analysis of PK-treated control & LTD-AVs, validating the presence of proteins identified by the proteomic analyses in autophagic vesicles. Postsynaptic density (PSD) fraction used as reference. Graph showing the fold change of normalized levels of proteins validated by WB, as a ratio of LTD to control. Cargo proteins normalized to levels of p62, which remains unaffected at the early phase of LTD. N = 3 independent AV preparations. Bars represent mean values \pm SEM. Statistical analysis performed using paired, two-tailed Student's t-test (GluA1, N = 6, P = 0.0002; GluA2, N = 6, P = 0.0039; Pick1, N = 5, P = 0.011; SAP97, N = 5, P = 0.0179; FYN, N = 8, P < 0.0001; CamKIIa, N = 8, P < 0.0001; IL1RAPL1, N = 8, P = 0.0004; Adam22, N = 4, P = 0.0018; INA, N = 3, P = 0.0287; MYH10, N = 8, P < 0.0001; ITPKA, N = 6, P = 0.0006; KCC2, N = 4, P = 0.0352; cofilin-1, N = 6, P = 0.005; dynamin, N = 6, P = 0.0005; p62, N = 6, P = 0.9809). All indicated molecular weights in a–d & g are in kDaltons (kD). Image collected & cropped by CiteAb from the following publication (<https://pubmed.ncbi.nlm.nih.gov/35115539>), licensed under a CC-BY license. Not internally tested by Novus Biologicals.



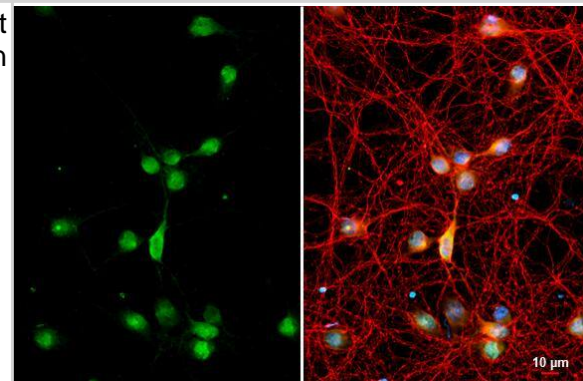
Immunohistochemistry-Paraffin: RAB11B Antibody [NBP2-15085] - RAB11B antibody [N1C3] detects RAB11B protein at cytoplasm by immunohistochemical analysis. Sample: Paraffin-embedded mouse brain. RAB11B stained by RAB11B antibody [N1C3] (NBP2-15085) diluted at 1:500. Antigen Retrieval: Citrate buffer, pH 6.0, 15 min



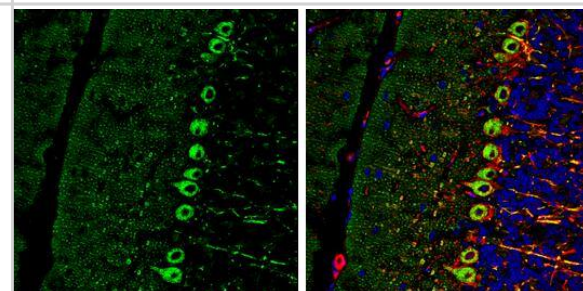
Western Blot: RAB11B Antibody [NBP2-15085] - Various whole cell extracts (30 ug) were separated by 12% SDS-PAGE, and the membrane was blotted with RAB11B antibody [N1C3] (NBP2-15085) diluted at 1:1000. The HRP-conjugated anti-rabbit IgG antibody was used to detect the primary antibody.



RAB11B antibody [N1C3] detects RAB11B protein by immunofluorescent analysis. Sample: DIV9 rat cortical neuron and Glia cell cells were fixed in 4% paraformaldehyde at RT for 15 min. Green: RAB11B stained by RAB11B antibody [N1C3] (NBP2-15085) diluted at 1:250. Red: Tau, an axon marker, stained by Tau antibody [GT287] diluted at 1:500. Blue: Fluoroshield with DAPI .

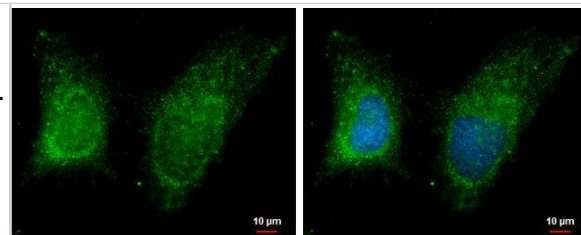


RAB11B antibody [N1C3] detects RAB11B Protein expression by immunohistochemical analysis.
Sample: Frozen-sectioned adult mouse cerebellum.
Green: RAB11B stained by RAB11B antibody [N1C3] (NBP2-15085) diluted at 1:250.
Red: NF-H, stained by NF-H antibody [GT114] diluted at 1:500.
Blue: Fluoroshield with DAPI .
br>Antigen Retrieval: Citrate buffer, pH 6.0, 10 min



GRAMD1B antibody [C1C2], Internal detects GRAMD1B protein at cytoplasm by immunofluorescent analysis.
Sample: HeLa cells were fixed in 2% paraformaldehyde at RT for 15 min.

Green: GRAMD1B protein stained by GRAMD1B antibody [C1C2], Internal (NBP2-15085) diluted at 1:500.
Blue: Hoechst 33342 staining.



Publications

Kallergi E, Daskalaki AD, Kolaxi A et al. Dendritic autophagy degrades postsynaptic proteins and is required for long-term synaptic depression in mice Nature communications 2022-02-03 [PMID: 35115539] (WB, Mouse)



Novus Biologicals USA

10730 E. Briarwood Avenue
Centennial, CO 80112
USA
Phone: 303.730.1950
Toll Free: 1.888.506.6887
Fax: 303.730.1966
nb-customerservice@bio-techne.com

Bio-Techne Canada

21 Canmotor Ave
Toronto, ON M8Z 4E6
Canada
Phone: 905.827.6400
Toll Free: 855.668.8722
Fax: 905.827.6402
canada.inquires@bio-techne.com

Bio-Techne Ltd

19 Barton Lane
Abingdon Science Park
Abingdon, OX14 3NB, United Kingdom
Phone: (44) (0) 1235 529449
Free Phone: 0800 37 34 15
Fax: (44) (0) 1235 533420
info.EMEA@bio-techne.com

General Contact Information

www.novusbio.com
Technical Support: nb-technical@bio-techne.com
Orders: nb-customerservice@bio-techne.com
General: novus@novusbio.com

Products Related to NBP2-15085

NBP2-33376H	Blue Marker Antibody (6F4-F6) [HRP]
HAF008	Goat anti-Rabbit IgG Secondary Antibody [HRP]
NB7160	Goat anti-Rabbit IgG (H+L) Secondary Antibody [HRP]
NBP2-24891	Rabbit IgG Isotype Control

Limitations

This product is for research use only and is not approved for use in humans or in clinical diagnosis. Primary Antibodies are guaranteed for 1 year from date of receipt.

For more information on our 100% guarantee, please visit www.novusbio.com/guarantee

Earn gift cards/discounts by submitting a review: www.novusbio.com/reviews/submit/NBP2-15085

Earn gift cards/discounts by submitting a publication using this product:
www.novusbio.com/publications

