

# Product Datasheet

## LIN7 Antibody NBP2-15016

Unit Size: 0.1 ml

Aliquot and store at -20C or -80C. Avoid freeze-thaw cycles.

[www.novusbio.com](http://www.novusbio.com)



[technical@novusbio.com](mailto:technical@novusbio.com)

Protocols, Publications, Related Products, Reviews, Research Tools and Images at:  
[www.novusbio.com/NBP2-15016](http://www.novusbio.com/NBP2-15016)

Updated 9/25/2025 v.20.1

Earn rewards for product  
reviews and publications.

Submit a publication at [www.novusbio.com/publications](http://www.novusbio.com/publications)

Submit a review at [www.novusbio.com/reviews/destination/NBP2-15016](http://www.novusbio.com/reviews/destination/NBP2-15016)



**NBP2-15016**

## LIN7 Antibody

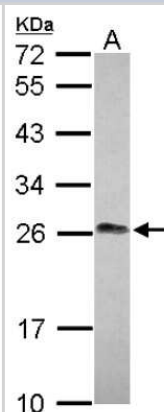
Product Information	
Unit Size	0.1 ml
Concentration	Concentrations vary lot to lot. See vial label for concentration. If unlisted please contact technical services.
Storage	Aliquot and store at -20C or -80C. Avoid freeze-thaw cycles.
Clonality	Polyclonal
Preservative	0.01% Thimerosal
Isotype	IgG
Purity	Antigen Affinity-purified
Buffer	PBS, 1% BSA, 20% Glycerol

Product Description	
Description	Novus Biologicals Rabbit LIN7 Antibody (NBP2-15016) is a polyclonal antibody validated for use in IHC, WB and ICC/IF. All Novus Biologicals antibodies are covered by our 100% guarantee.
Host	Rabbit
Gene ID	8825
Gene Symbol	LIN7A
Species	Human, Mouse
Immunogen	Recombinant protein encompassing a sequence within the center region of human LIN7. The exact sequence is proprietary.

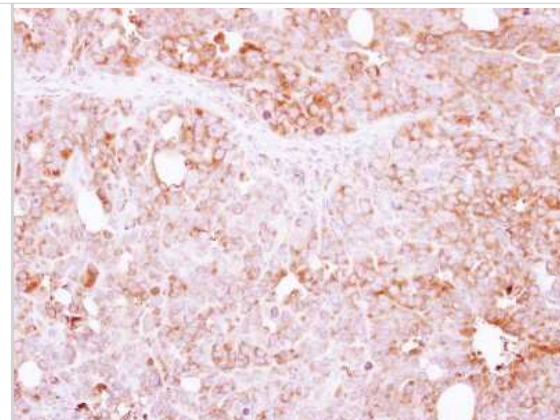
Product Application Details	
Applications	Western Blot, Immunohistochemistry-Paraffin, Immunocytochemistry/ Immunofluorescence, Immunohistochemistry
Recommended Dilutions	Western Blot 1:1000-1:10000, Immunohistochemistry 10 - 1:500, Immunocytochemistry/ Immunofluorescence 1:100-1:1000, Immunohistochemistry-Paraffin 1:100-1:1000

**Images**

Western Blot: LIN7 Antibody [NBP2-15016] - Sample (30 ug of whole cell lysate) A: MCF-7 12% SDS PAGE; antibody diluted at 1:5000.



Immunohistochemistry-Paraffin: LIN7 Antibody [NBP2-15016] - Paraffin-embedded Colon ca, using antibody at 1:250 dilution.



Immunocytochemistry/ Immunofluorescence: LIN7 Antibody [NBP2-15016] - LIN7 antibody [N1C3] detects LIN7 protein at cell membrane by immunofluorescent analysis.

Sample: MCF-7 cells were fixed in ice-cold MeOH for 5 min.

Green: LIN7 protein stained by LIN7 antibody [N1C3] (NBP2-15016) diluted at 1:1000.

Blue: Hoechst 33342 staining.

Scale bar = 10 um.

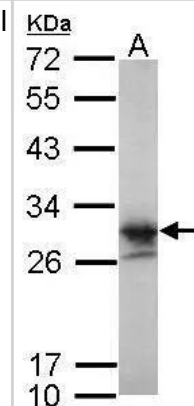


Western Blot: LIN7 Antibody [NBP2-15016] - Sample (30 ug of whole cell lysate)

A: zebrafish eye

12% SDS PAGE

NBP2-15016 diluted at 1:1000

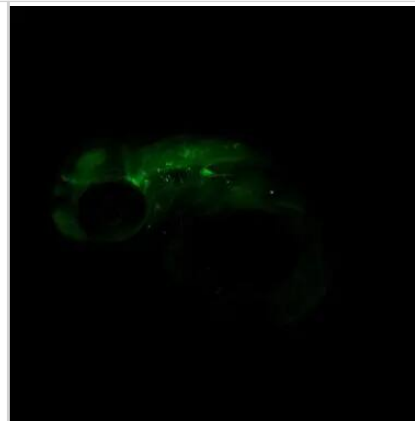


Immunohistochemistry: LIN7 Antibody [NBP2-15016] - Immunohistochemical analysis of paraffin-embedded zebrafish tissue, using LIN7 antibody [N1C3] (NBP2-15016) at 1:300 dilution.



Immunohistochemistry: LIN7 Antibody [NBP2-15016] - LIN7 antibody [N1C3] detects Lin7a protein on zebrafish by whole mount immunohistochemical analysis.

Sample: 2 days-post-fertilization zebrafish embryo.  
LIN7 antibody [N1C3] (NBP2-15016) dilution: 1:200.





### **Novus Biologicals USA**

10730 E. Briarwood Avenue  
Centennial, CO 80112  
USA  
Phone: 303.730.1950  
Toll Free: 1.888.506.6887  
Fax: 303.730.1966  
nb-customerservice@bio-techne.com

### **Bio-Techne Canada**

21 Canmotor Ave  
Toronto, ON M8Z 4E6  
Canada  
Phone: 905.827.6400  
Toll Free: 855.668.8722  
Fax: 905.827.6402  
canada.inquires@bio-techne.com

### **Bio-Techne Ltd**

19 Barton Lane  
Abingdon Science Park  
Abingdon, OX14 3NB, United Kingdom  
Phone: (44) (0) 1235 529449  
Free Phone: 0800 37 34 15  
Fax: (44) (0) 1235 533420  
info.EMEA@bio-techne.com

### **General Contact Information**

www.novusbio.com  
Technical Support: nb-technical@bio-techne.com  
Orders: nb-customerservice@bio-techne.com  
General: novus@novusbio.com

### **Products Related to NBP2-15016**

---

NBP2-33376H	Blue Marker Antibody (6F4-F6) [HRP]
HAF008	Goat anti-Rabbit IgG Secondary Antibody [HRP]
NB7160	Goat anti-Rabbit IgG (H+L) Secondary Antibody [HRP]
NBP2-24891	Rabbit IgG Isotype Control

---

### **Limitations**

This product is for research use only and is not approved for use in humans or in clinical diagnosis. Primary Antibodies are guaranteed for 1 year from date of receipt.

For more information on our 100% guarantee, please visit [www.novusbio.com/guarantee](http://www.novusbio.com/guarantee)

Earn gift cards/discounts by submitting a review: [www.novusbio.com/reviews/submit/NBP2-15016](http://www.novusbio.com/reviews/submit/NBP2-15016)

Earn gift cards/discounts by submitting a publication using this product:  
[www.novusbio.com/publications](http://www.novusbio.com/publications)

