

Product Datasheet

CSRP1 Antibody - BSA Free

NBP2-14919

Unit Size: 0.1 ml

Aliquot and store at -20C or -80C. Avoid freeze-thaw cycles.

www.novusbio.com



technical@novusbio.com

Protocols, Publications, Related Products, Reviews, Research Tools and Images at:
www.novusbio.com/NBP2-14919

Updated 9/25/2025 v.20.1

Earn rewards for product
reviews and publications.

Submit a publication at www.novusbio.com/publications

Submit a review at www.novusbio.com/reviews/destination/NBP2-14919



NBP2-14919

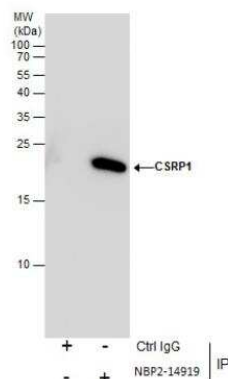
CSRP1 Antibody - BSA Free

Product Information	
Unit Size	0.1 ml
Concentration	Concentrations vary lot to lot. See vial label for concentration. If unlisted please contact technical services.
Storage	Aliquot and store at -20C or -80C. Avoid freeze-thaw cycles.
Clonality	Polyclonal
Preservative	0.01% Thimerosal
Isotype	IgG
Purity	Antigen Affinity-purified
Buffer	0.1M Tris, 0.1M Glycine, 20% Glycerol
Target Molecular Weight	21 kDa
Product Description	
Description	Novus Biologicals Rabbit CSRP1 Antibody - BSA Free (NBP2-14919) is a polyclonal antibody validated for use in WB and IP. All Novus Biologicals antibodies are covered by our 100% guarantee.
Host	Rabbit
Gene ID	1465
Gene Symbol	CSRP1
Species	Human, Zebrafish
Reactivity Notes	Rhesus Monkey (99%), Xenopus laevis (80%), Chicken (89%).
Immunogen	Recombinant protein encompassing a sequence within the center region of human CSRP1. The exact sequence is proprietary.
Product Application Details	
Applications	Western Blot, Immunoprecipitation
Recommended Dilutions	Western Blot 1:500-1:3000, Immunoprecipitation 1:100-1:500

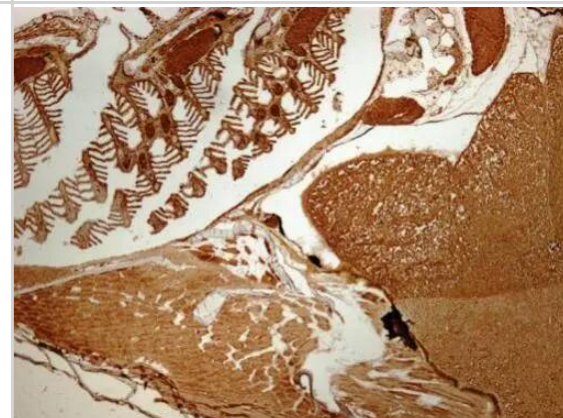


Images

Immunoprecipitation: CSRP1 Antibody [NBP2-14919] - CRP1 protein from A549 whole cell extracts using 5 ug of CRP1 antibody [N1C3]. Western blot analysis was performed using CRP1 antibody [N1C3]. EasyBlot anti-Rabbit IgG was used as a secondary reagent.



Immunohistochemistry: CSRP1 Antibody [NBP2-14919] - Immunohistochemical analysis of paraffin-embedded zebrafish tissue, using CSRP1 antibody [N1C3] (NBP2-14919) at 1:300 dilution.

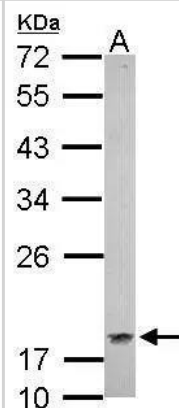


Western Blot: CSRP1 Antibody [NBP2-14919] - Sample (30 ug of whole cell lysate)

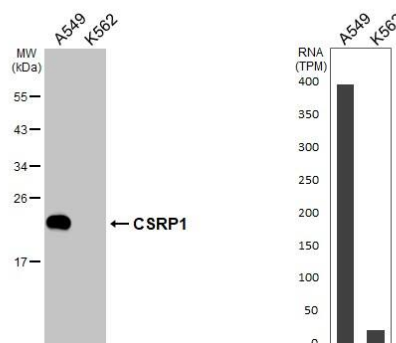
A: whole zebrafish

12% SDS PAGE

NBP2-14919 diluted at 1:1000



Various whole cell extracts (30 ug) were separated by 12% SDS-PAGE, and the membrane was blotted with CSRP1 antibody [N1C3] (NBP2-14919) diluted at 1:1000. The HRP-conjugated anti-rabbit IgG antibody was used to detect the primary antibody. Corresponding RNA expression data for the same cell lines are based on Human Protein Atlas program.





Novus Biologicals USA

10730 E. Briarwood Avenue
Centennial, CO 80112
USA
Phone: 303.730.1950
Toll Free: 1.888.506.6887
Fax: 303.730.1966
nb-customerservice@bio-techne.com

Bio-Techne Canada

21 Canmotor Ave
Toronto, ON M8Z 4E6
Canada
Phone: 905.827.6400
Toll Free: 855.668.8722
Fax: 905.827.6402
canada.inquires@bio-techne.com

Bio-Techne Ltd

19 Barton Lane
Abingdon Science Park
Abingdon, OX14 3NB, United Kingdom
Phone: (44) (0) 1235 529449
Free Phone: 0800 37 34 15
Fax: (44) (0) 1235 533420
info.EMEA@bio-techne.com

General Contact Information

www.novusbio.com
Technical Support: nb-technical@bio-techne.com
Orders: nb-customerservice@bio-techne.com
General: novus@novusbio.com

Products Related to NBP2-14919

NBP2-33376H	Blue Marker Antibody (6F4-F6) [HRP]
HAF008	Goat anti-Rabbit IgG Secondary Antibody [HRP]
NB7160	Goat anti-Rabbit IgG (H+L) Secondary Antibody [HRP]
NBP2-24891	Rabbit IgG Isotype Control

Limitations

This product is for research use only and is not approved for use in humans or in clinical diagnosis. Primary Antibodies are guaranteed for 1 year from date of receipt.

For more information on our 100% guarantee, please visit www.novusbio.com/guarantee

Earn gift cards/discounts by submitting a review: www.novusbio.com/reviews/submit/NBP2-14919

Earn gift cards/discounts by submitting a publication using this product:
www.novusbio.com/publications

