

# Product Datasheet

## Tubulin Beta 2C Antibody - BSA Free NBP2-14886

Unit Size: 0.1 ml

Aliquot and store at -20C or -80C. Avoid freeze-thaw cycles.

[www.novusbio.com](http://www.novusbio.com)



[technical@novusbio.com](mailto:technical@novusbio.com)

Protocols, Publications, Related Products, Reviews, Research Tools and Images at:  
[www.novusbio.com/NBP2-14886](http://www.novusbio.com/NBP2-14886)

Updated 9/25/2025 v.20.1

Earn rewards for product  
reviews and publications.

Submit a publication at [www.novusbio.com/publications](http://www.novusbio.com/publications)

Submit a review at [www.novusbio.com/reviews/destination/NBP2-14886](http://www.novusbio.com/reviews/destination/NBP2-14886)



**NBP2-14886**

Tubulin Beta 2C Antibody - BSA Free

Product Information	
Unit Size	0.1 ml
Concentration	Concentrations vary lot to lot. See vial label for concentration. If unlisted please contact technical services.
Storage	Aliquot and store at -20C or -80C. Avoid freeze-thaw cycles.
Clonality	Polyclonal
Preservative	0.025% Proclin 300
Isotype	IgG
Purity	Antigen Affinity-purified
Buffer	PBS, 20% Glycerol
Target Molecular Weight	50 kDa

Product Description	
Description	Novus Biologicals Rabbit Tubulin Beta 2C Antibody - BSA Free (NBP2-14886) is a polyclonal antibody validated for use in IHC, WB and ICC/IF. All Novus Biologicals antibodies are covered by our 100% guarantee.
Host	Rabbit
Gene ID	10383
Gene Symbol	TUBB4B
Species	Human, Mouse
Immunogen	Recombinant protein encompassing a sequence within the center region of human Tubulin Beta 2C. The exact sequence is proprietary.

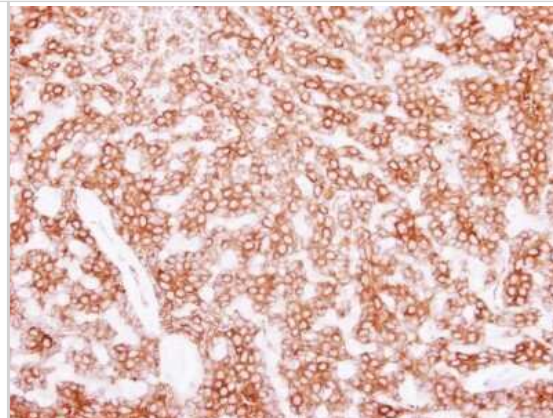
Product Application Details	
Applications	Western Blot, Immunohistochemistry-Paraffin, Immunocytochemistry/ Immunofluorescence, Immunohistochemistry
Recommended Dilutions	Western Blot 1:5000-1:20000, Immunohistochemistry 1:100-1:1000, Immunocytochemistry/ Immunofluorescence 1:100-1:1000, Immunohistochemistry-Paraffin 1:100-1:1000

**Images**

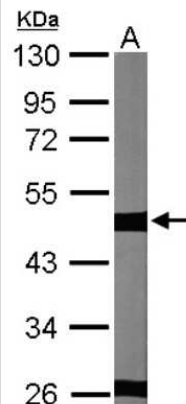
Western Blot: Tubulin Beta 2C Antibody [NBP2-14886] - Various whole cell extracts (30 ug) were separated by 10% SDS-PAGE, and the membrane was blotted with beta Tubulin 2C antibody diluted at 1:10000. HRP-conjugated anti-rabbit IgG antibody was used to detect the primary antibody.



Immunohistochemistry-Paraffin: Tubulin Beta 2C Antibody [NBP2-14886] - Beta Tubulin 2C antibody detects beta Tubulin 2C protein at cytoplasm on human breast cancer by immunohistochemical analysis. Sample: Paraffin-embedded breast cancer. Beta Tubulin 2C antibody dilution: 1:250.



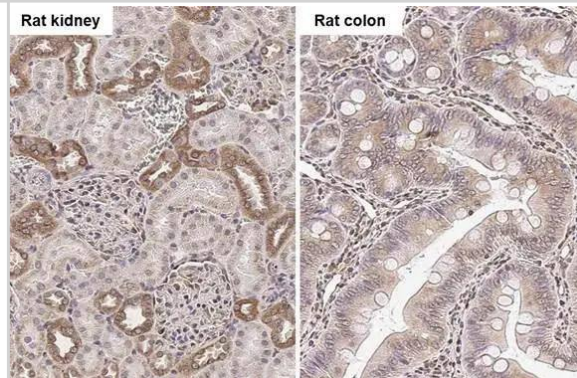
Western Blot: Tubulin Beta 2C Antibody [NBP2-14886] - Sample (30 ug of whole cell lysate) A: NIH-3T3 10% SDS PAGE; antibody diluted at 1:10000.



beta Tubulin 2C antibody [C1C3] detects beta Tubulin 2C protein by immunohistochemical analysis. Sample: Paraffin-embedded mouse tissues. beta Tubulin 2C stained by beta Tubulin 2C antibody [C1C3] (NBP2-14886) diluted at 1:500. Antigen Retrieval: Citrate buffer, pH 6.0, 15 min



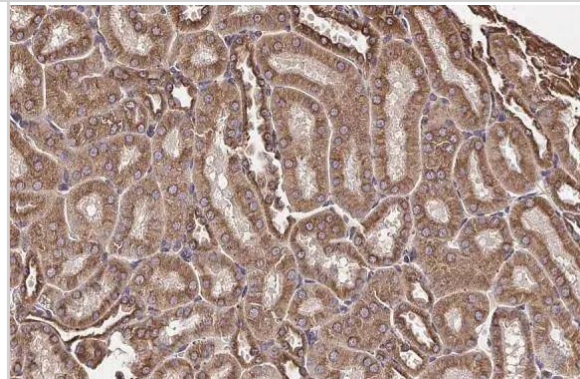
beta Tubulin 2C antibody [C1C3] detects beta Tubulin 2C protein by immunohistochemical analysis. Sample: Paraffin-embedded rat tissues. beta Tubulin 2C stained by beta Tubulin 2C antibody [C1C3] (NBP2-14886) diluted at 1:500. Antigen Retrieval: Citrate buffer, pH 6.0, 15 min



beta Tubulin 2C antibody [C1C3] detects beta Tubulin 2C protein at cytoskeleton by immunofluorescent analysis. Sample: HeLa cells were fixed in 4% paraformaldehyde at RT for 15 min. Green: beta Tubulin 2C stained by beta Tubulin 2C antibody [C1C3] (NBP2-14886) diluted at 1:500. Blue: Fluoroshield with DAPI .Scale bar= 10 um.



beta Tubulin 2C antibody [C1C3] detects beta Tubulin 2C protein at cytoplasm by immunohistochemical analysis. Sample: Paraffin-embedded mouse kidney. beta Tubulin 2C stained by beta Tubulin 2C antibody [C1C3] (NBP2-14886) diluted at 1:500. Antigen Retrieval: Citrate buffer, pH 6.0, 15 min





### **Novus Biologicals USA**

10730 E. Briarwood Avenue  
Centennial, CO 80112  
USA  
Phone: 303.730.1950  
Toll Free: 1.888.506.6887  
Fax: 303.730.1966  
nb-customerservice@bio-techne.com

### **Bio-Techne Canada**

21 Canmotor Ave  
Toronto, ON M8Z 4E6  
Canada  
Phone: 905.827.6400  
Toll Free: 855.668.8722  
Fax: 905.827.6402  
canada.inquires@bio-techne.com

### **Bio-Techne Ltd**

19 Barton Lane  
Abingdon Science Park  
Abingdon, OX14 3NB, United Kingdom  
Phone: (44) (0) 1235 529449  
Free Phone: 0800 37 34 15  
Fax: (44) (0) 1235 533420  
info.EMEA@bio-techne.com

### **General Contact Information**

www.novusbio.com  
Technical Support: nb-technical@bio-techne.com  
Orders: nb-customerservice@bio-techne.com  
General: novus@novusbio.com

### **Products Related to NBP2-14886**

---

NBP2-33376H	Blue Marker Antibody (6F4-F6) [HRP]
HAF008	Goat anti-Rabbit IgG Secondary Antibody [HRP]
NB7160	Goat anti-Rabbit IgG (H+L) Secondary Antibody [HRP]
NBP2-24891	Rabbit IgG Isotype Control

---

### **Limitations**

This product is for research use only and is not approved for use in humans or in clinical diagnosis. Primary Antibodies are guaranteed for 1 year from date of receipt.

For more information on our 100% guarantee, please visit [www.novusbio.com/guarantee](http://www.novusbio.com/guarantee)

Earn gift cards/discounts by submitting a review: [www.novusbio.com/reviews/submit/NBP2-14886](http://www.novusbio.com/reviews/submit/NBP2-14886)

Earn gift cards/discounts by submitting a publication using this product:  
[www.novusbio.com/publications](http://www.novusbio.com/publications)

