

Product Datasheet

PSMC1 Antibody - BSA Free

NBP2-14857

Unit Size: 100 ul

Store at 4C. Do not freeze.

www.novusbio.com



technical@novusbio.com

Protocols, Publications, Related Products, Reviews, Research Tools and Images at:
www.novusbio.com/NBP2-14857

Updated 9/9/2025 v.20.1

Earn rewards for product
reviews and publications.

Submit a publication at www.novusbio.com/publications

Submit a review at www.novusbio.com/reviews/destination/NBP2-14857



NBP2-14857

PSMC1 Antibody - BSA Free

Product Information	
Unit Size	100 ul
Concentration	1.0 mg/ml
Storage	Store at 4C. Do not freeze.
Clonality	Polyclonal
Preservative	0.09% Sodium Azide
Isotype	IgG
Purity	Immunogen affinity purified
Buffer	Tris-Citrate/Phosphate (pH 7.0 - 8.0)

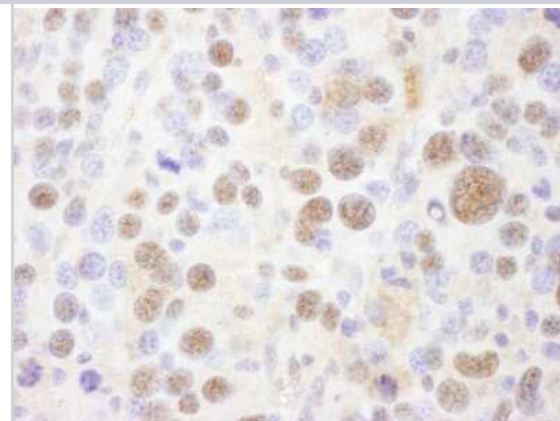
Product Description	
Description	Novus Biologicals Rabbit PSMC1 Antibody - BSA Free (NBP2-14857) is a polyclonal antibody validated for use in IHC, WB and IP. All Novus Biologicals antibodies are covered by our 100% guarantee.
Host	Rabbit
Gene ID	5700
Gene Symbol	PSMC1
Species	Human, Mouse
Immunogen	This antibody maps to a region between residue 390 and 440 of human Proteasome (prosome, macropain) Subunit, ATPase, 1 using the numbering given in entry NP_002793.2 (GeneID 5700).

Product Application Details	
Applications	Western Blot, Immunohistochemistry-Paraffin, Immunohistochemistry, Immunoprecipitation
Recommended Dilutions	Western Blot 1:2000-1:10000, Immunohistochemistry 1:500 - 1:2000, Immunoprecipitation 2-10 ug/mg lysate, Immunohistochemistry-Paraffin 1:500 - 1:2000
Application Notes	Epitope retrieval with citrate buffer pH6.0 is recommended for FFPE tissue sections.

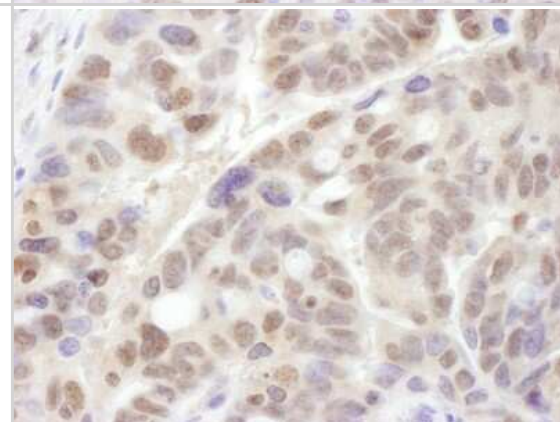


Images

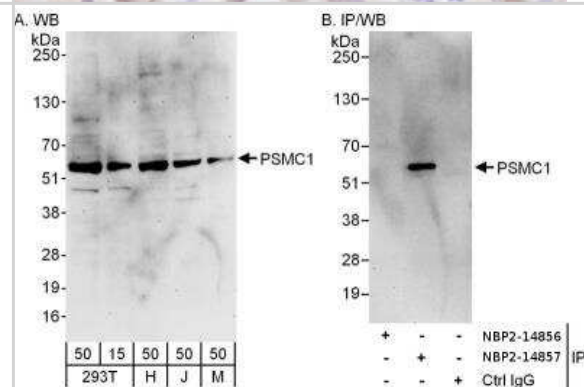
Immunohistochemistry-Paraffin: PSMC1 Antibody [NBP2-14857] -
 Sample: FFPE section of mouse renal cell carcinoma. Antibody: Affinity
 purified rabbit anti- PSMC1 used at a dilution of 1:1,000 (1ug/ml).
 Detection: DAB



Immunohistochemistry-Paraffin: PSMC1 Antibody [NBP2-14857] -
 Sample: FFPE section of human ovarian carcinoma. Antibody: Affinity
 purified rabbit anti- PSMC1 used at a dilution of 1:1,000 (1ug/ml).
 Detection: DAB



Immunoprecipitation: PSMC1 Antibody [NBP2-14857] - Samples: Whole
 cell lysate from 293T (15 and 50 ug for WB; 1 mg for IP, 20% of IP
 loaded), HeLa (H; 50 ug), Jurkat (J; 50 ug) and mouse NIH3T3 (M; 50
 ug) cells. Antibodies: Affinity purified rabbit anti-PSMC1 antibody used
 for WB at 0.4 ug/ml (A) and 1 ug/ml (B) and used for IP at 6 ug/mg
 lysate. PSMC1 was successfully immunoprecipitated by rabbit anti-
 PSMC1 antibody, which recognizes a downstream epitope. Detection:
 Chemiluminescence with exposure times of 3 minutes (A) and 30
 seconds (B).





Novus Biologicals USA

10730 E. Briarwood Avenue
Centennial, CO 80112
USA
Phone: 303.730.1950
Toll Free: 1.888.506.6887
Fax: 303.730.1966
nb-customerservice@bio-techne.com

Bio-Techne Canada

21 Canmotor Ave
Toronto, ON M8Z 4E6
Canada
Phone: 905.827.6400
Toll Free: 855.668.8722
Fax: 905.827.6402
canada.inquires@bio-techne.com

Bio-Techne Ltd

19 Barton Lane
Abingdon Science Park
Abingdon, OX14 3NB, United Kingdom
Phone: (44) (0) 1235 529449
Free Phone: 0800 37 34 15
Fax: (44) (0) 1235 533420
info.EMEA@bio-techne.com

General Contact Information

www.novusbio.com
Technical Support: nb-technical@bio-techne.com
Orders: nb-customerservice@bio-techne.com
General: novus@novusbio.com

Products Related to NBP2-14857

NBP2-33376H	Blue Marker Antibody (6F4-F6) [HRP]
HAF008	Goat anti-Rabbit IgG Secondary Antibody [HRP]
NB7160	Goat anti-Rabbit IgG (H+L) Secondary Antibody [HRP]
NBP2-24891	Rabbit IgG Isotype Control

Limitations

This product is for research use only and is not approved for use in humans or in clinical diagnosis. Primary Antibodies are guaranteed for 1 year from date of receipt.

For more information on our 100% guarantee, please visit www.novusbio.com/guarantee

Earn gift cards/discounts by submitting a review: www.novusbio.com/reviews/submit/NBP2-14857

Earn gift cards/discounts by submitting a publication using this product:
www.novusbio.com/publications

