

# Product Datasheet

## CS Citrate Synthase Antibody - BSA Free NBP2-13878

Unit Size: 0.1 ml

Store at 4C short term. Aliquot and store at -20C long term. Avoid freeze-thaw cycles.

[www.novusbio.com](http://www.novusbio.com)



[technical@novusbio.com](mailto:technical@novusbio.com)

### Publications: 4

Protocols, Publications, Related Products, Reviews, Research Tools and Images at:  
[www.novusbio.com/NBP2-13878](http://www.novusbio.com/NBP2-13878)

Updated 12/2/2025 v.20.1

Earn rewards for product  
reviews and publications.

Submit a publication at [www.novusbio.com/publications](http://www.novusbio.com/publications)

Submit a review at [www.novusbio.com/reviews/destination/NBP2-13878](http://www.novusbio.com/reviews/destination/NBP2-13878)

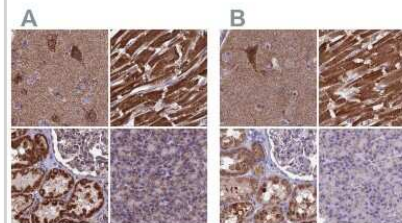


**NBP2-13878****CS Citrate Synthase Antibody - BSA Free**

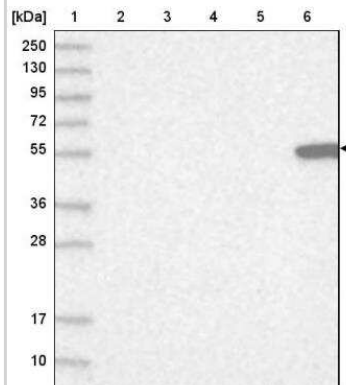
<b>Product Information</b>	
<b>Unit Size</b>	0.1 ml
<b>Concentration</b>	Concentrations vary lot to lot. See vial label for concentration. If unlisted please contact technical services.
<b>Storage</b>	Store at 4C short term. Aliquot and store at -20C long term. Avoid freeze-thaw cycles.
<b>Clonality</b>	Polyclonal
<b>Preservative</b>	0.02% Sodium Azide
<b>Isotype</b>	IgG
<b>Purity</b>	Affinity purified
<b>Buffer</b>	PBS (pH 7.2) and 40% Glycerol
<b>Product Description</b>	
<b>Description</b>	Novus Biologicals Rabbit CS Citrate Synthase Antibody - BSA Free (NBP2-13878) is a polyclonal antibody validated for use in IHC, WB and ICC/IF. Anti-CS Citrate Synthase Antibody: Cited in 3 publications. All Novus Biologicals antibodies are covered by our 100% guarantee.
<b>Host</b>	Rabbit
<b>Gene ID</b>	1431
<b>Gene Symbol</b>	CS
<b>Species</b>	Human, Mouse
<b>Reactivity Notes</b>	Mouse reactivity reported in scientific literature (PMID: 29290465).
<b>Immunogen</b>	This antibody was developed against a recombinant protein corresponding to the amino acids: ADLIPKEQARIKTRQQHKGKTVVGQITVDMMYGGMRGMKGLVYETSVLDPDE GIRFRGFSIPECQKLLPKAKGGEEPLPEGLFWLLVTGHIPTTEEQVSWL
<b>Product Application Details</b>	
<b>Applications</b>	Western Blot, Immunohistochemistry-Paraffin, Immunocytochemistry/Immunofluorescence, Immunohistochemistry
<b>Recommended Dilutions</b>	Western Blot 0.04-0.4 ug/ml, Immunohistochemistry 1:200 - 1:500, Immunocytochemistry/ Immunofluorescence 0.25-2 ug/ml, Immunohistochemistry-Paraffin 1:200 - 1:500
<b>Application Notes</b>	For IHC-Paraffin, HIER pH 6 retrieval is recommended. For ICC/IF Fixation/Permeabilization: PFA/Triton X-100.

## Images

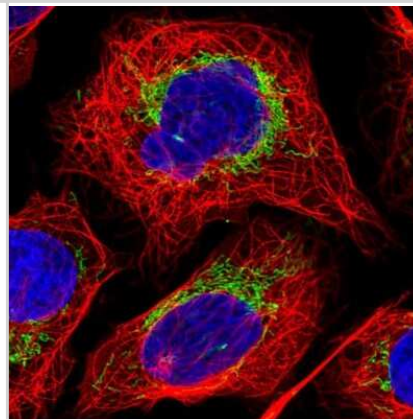
Immunohistochemistry-Paraffin: CS Citrate Synthase Antibody [NBP2-13878] - Staining of human cerebral cortex, heart muscle, kidney and pancreas using Anti-CS antibody NBP2-13878 (A) shows similar protein distribution across tissues to independent antibody NBP2-13877 (B).



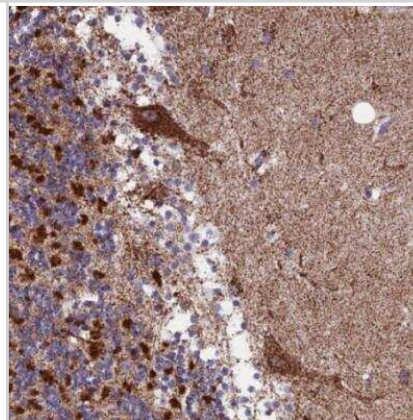
Western Blot: CS Citrate Synthase Antibody [NBP2-13878] - Lane 1: Marker [kDa] 250, 130, 95, 72, 55, 36, 28, 17, 10. Lane 2: Human cell line RT-4. Lane 3: Human cell line U-251MG sp. Lane 4: Human plasma (IgG/HSA depleted). Lane 5: Human liver tissue. Lane 6: Human tonsil tissue



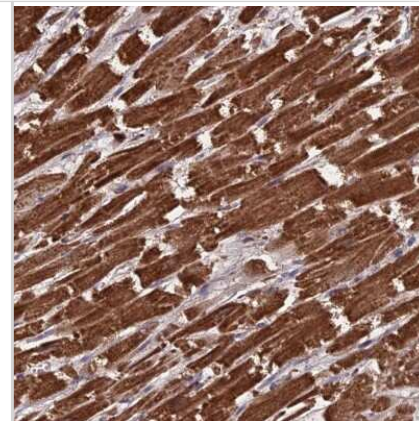
Immunocytochemistry/Immunofluorescence: CS Citrate Synthase Antibody [NBP2-13878] - Staining of human cell line U-2 OS shows localization to mitochondria. Antibody staining is shown in green.



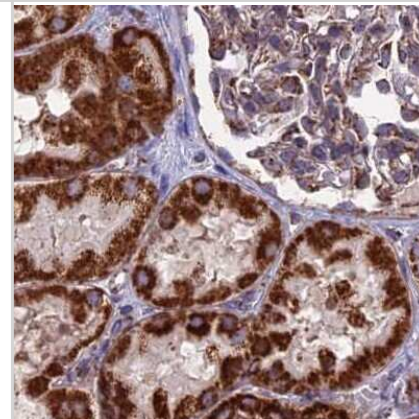
Immunohistochemistry-Paraffin: CS Citrate Synthase Antibody [NBP2-13878] - Staining of human cerebellum shows moderate to strong cytoplasmic positivity in purkinje cells.



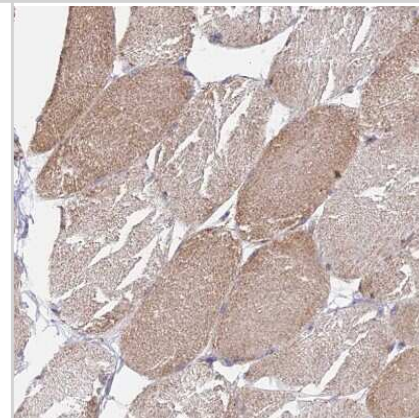
Immunohistochemistry-Paraffin: CS Citrate Synthase Antibody [NBP2-13878] - Staining of human heart muscle shows high expression.



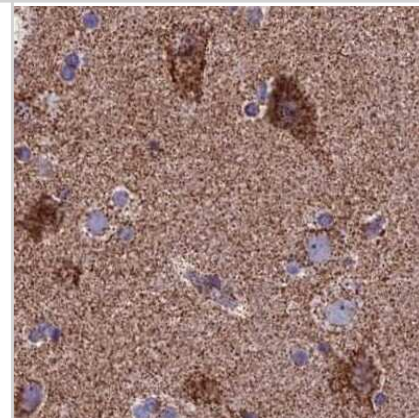
Immunohistochemistry-Paraffin: CS Citrate Synthase Antibody [NBP2-13878] - Staining of human kidney.



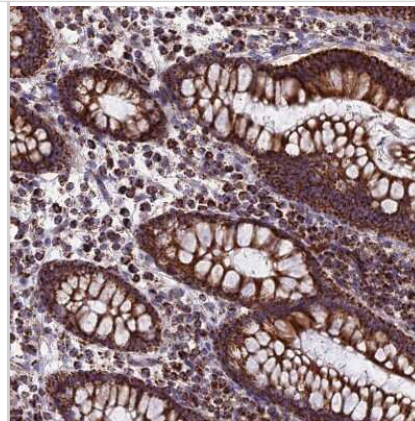
Immunohistochemistry-Paraffin: CS Citrate Synthase Antibody [NBP2-13878] - Staining of human skeletal muscle shows weak to moderate cytoplasmic positivity in myocytes.



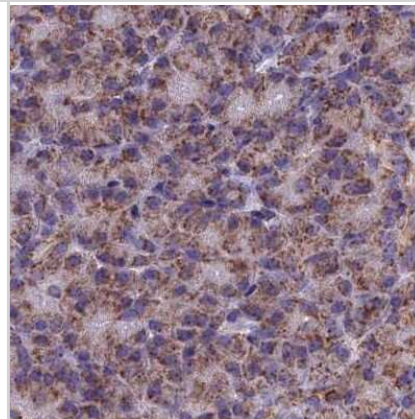
Immunohistochemistry-Paraffin: CS Citrate Synthase Antibody [NBP2-13878] - Staining of human cerebral cortex.



Immunohistochemistry-Paraffin: CS Citrate Synthase Antibody [NBP2-13878] - Staining of human colon shows strong cytoplasmic positivity in glandular cells.



Immunohistochemistry-Paraffin: CS Citrate Synthase Antibody [NBP2-13878] - Staining of human pancreas.



## Publications

Sharma A, Atasi T, Collin F et al. The Proteomic Landscape of Parkin-Deficient and Parkin-Overexpressing Rat Nucleus Accumbens: An Insight into the Role of Parkin in Methamphetamine Use Disorder. *Biomolecules* 2025-07-29 [PMID: 40723830]

Uttkarsh Ayyangar, Aneesh Karkhanis, Heather Tay, Aliya Farissa Binte Afandi, Oindrila Bhattacharjee, Lalitha KS, Sze Han Lee, James Chan, Srikala Raghavan Metabolic rewiring of macrophages by epidermal-derived lactate promotes sterile inflammation in the murine skin *The EMBO Journal* 2024-02-28 [PMID: 38418556]

Russo GL, Sonsalla G, Natarajan P et al. CRISPR-Mediated Induction of Neuron-Enriched Mitochondrial Proteins Boosts Direct Glia-to-Neuron Conversion *Cell Stem Cell* 2020-11-16 [PMID: 33202244]

Ingold I, Berndt C, Schmitt S et al. Selenium Utilization by GPX4 Is Required to Prevent Hydroperoxide-Induced Ferroptosis. *Cell* 2017-12-16 [PMID: 29290465] (Mouse)



### **Novus Biologicals USA**

10730 E. Briarwood Avenue  
Centennial, CO 80112  
USA  
Phone: 303.730.1950  
Toll Free: 1.888.506.6887  
Fax: 303.730.1966  
nb-customerservice@bio-techne.com

### **Bio-Techne Canada**

21 Canmotor Ave  
Toronto, ON M8Z 4E6  
Canada  
Phone: 905.827.6400  
Toll Free: 855.668.8722  
Fax: 905.827.6402  
canada.inquires@bio-techne.com

### **Bio-Techne Ltd**

19 Barton Lane  
Abingdon Science Park  
Abingdon, OX14 3NB, United Kingdom  
Phone: (44) (0) 1235 529449  
Free Phone: 0800 37 34 15  
Fax: (44) (0) 1235 533420  
info.EMEA@bio-techne.com

### **General Contact Information**

www.novusbio.com  
Technical Support: nb-technical@bio-techne.com  
Orders: nb-customerservice@bio-techne.com  
General: novus@novusbio.com

### **Products Related to NBP2-13878**

---

NBP2-13878PEP	CS Citrate Synthase Recombinant Protein Antigen
NBP2-33376H	Blue Marker Antibody (6F4-F6) [HRP]
HAF008	Goat anti-Rabbit IgG Secondary Antibody [HRP]
NB7160	Goat anti-Rabbit IgG (H+L) Secondary Antibody [HRP]
NBP2-24891	Rabbit IgG Isotype Control

---

### **Limitations**

This product is for research use only and is not approved for use in humans or in clinical diagnosis. Primary Antibodies are guaranteed for 1 year from date of receipt.

For more information on our 100% guarantee, please visit [www.novusbio.com/guarantee](http://www.novusbio.com/guarantee)

Earn gift cards/discounts by submitting a review: [www.novusbio.com/reviews/submit/NBP2-13878](http://www.novusbio.com/reviews/submit/NBP2-13878)

Earn gift cards/discounts by submitting a publication using this product:  
[www.novusbio.com/publications](http://www.novusbio.com/publications)

